

FOR LEASE

Premier Retail Exposure on Douglas Street

Unit 202 - 3214 Douglas Street | Victoria, BC



Jeff Lougheed
Vice President
250 386 0001
jeff.lougheed@cbre.com

Mitch Bryan
Associate
250 385 1225
mitch.bryan@cbre.com

CBRE

Highlights

- + 35,000+ average daily traffic
- + Standalone podium signage
- + Adjacent to Mayfair Shopping Centre
- + Flexible C-2 General Commercial zoning
- + Prime Douglas Street exposure

Details

Address	Unit 202 - 3214 Douglas Street, Victoria BC
Size	1,866 SF
Availability	Immediately
Parking	Ample on-site surface parking
Zoning	C-2 General Commercial Zone

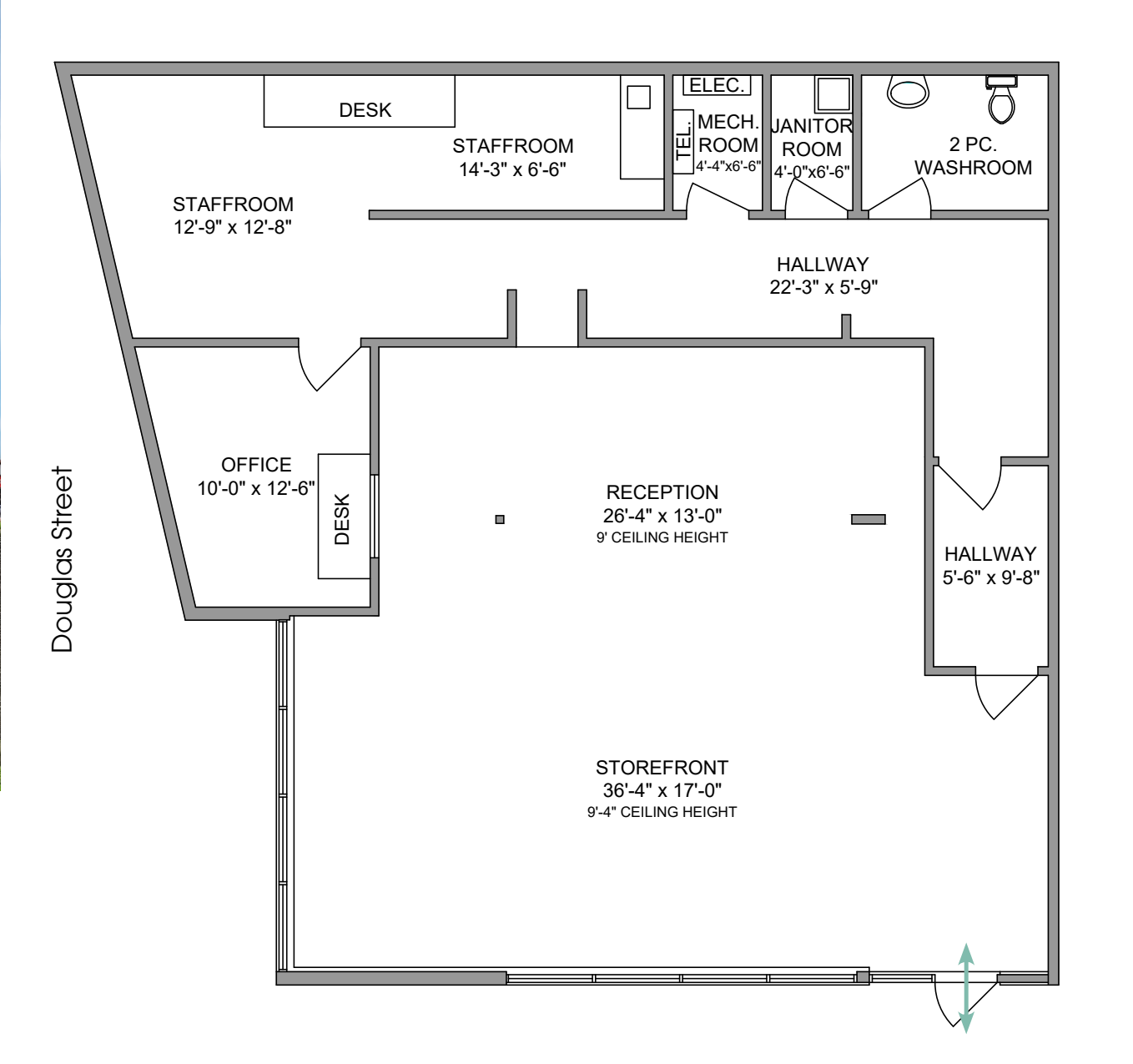
LEASE RATE

ADDITIONAL RENT

Contact Agents

\$19.00 PSF

View All Permitted Uses



Location

★ Unit 202 - 3214 Douglas Street

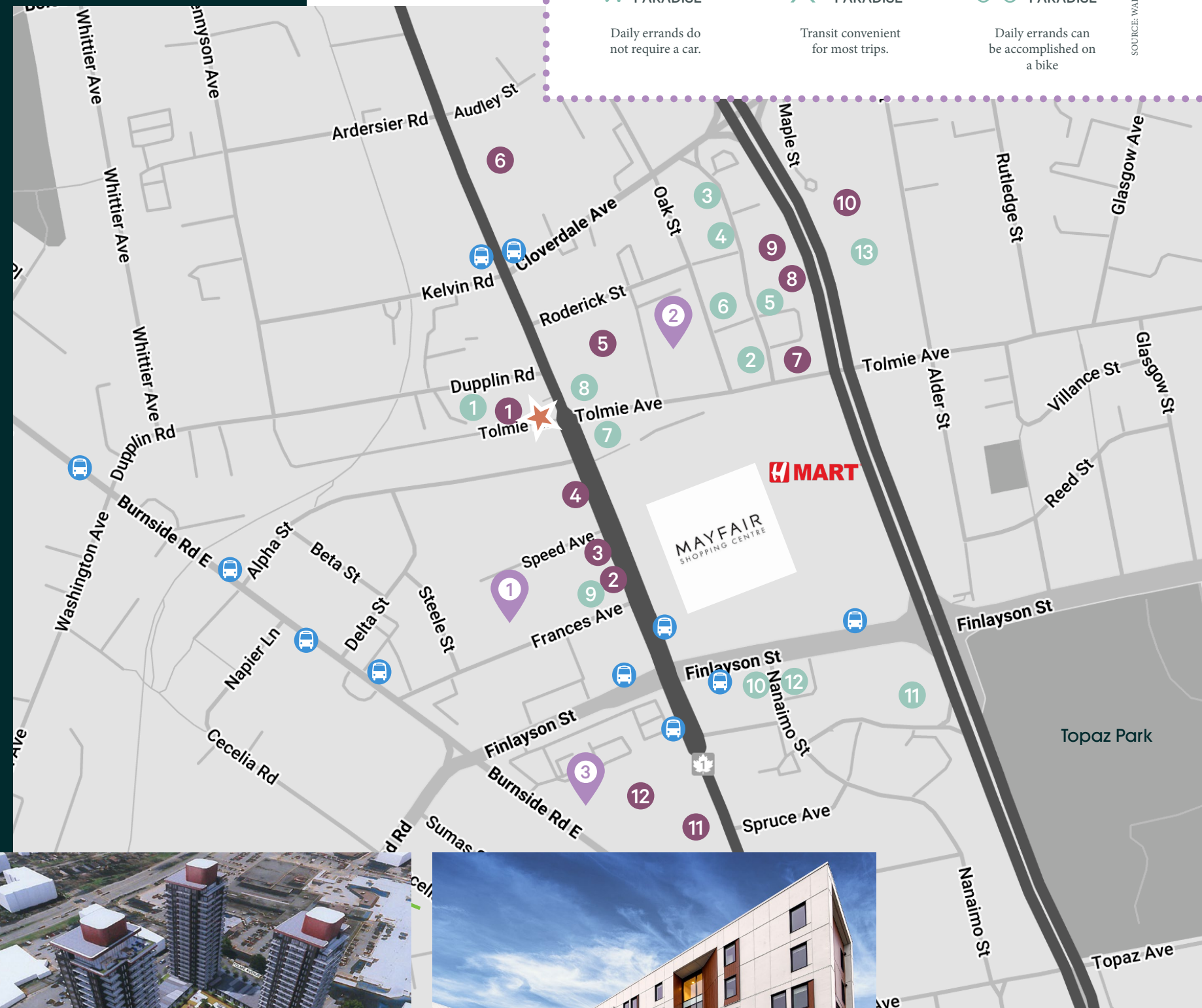
● Cafes + Restaurants

1. Domino's Pizza
2. The Ruby on Douglas
3. KFC
4. Starbucks
5. Tim Hortons
6. A&W
7. Red Robin
8. Lot 1 Pasta Bar
9. Royal Spice Fine Indian Cuisine
10. Bin 4 Burger Lounge
11. Palagio Pizza
12. Namaste Indian Cuisine

● Shopping + Services

1. JC Pharmacy
2. Staples
3. Home Sense
4. DSW Designer Shoe Warehouse
5. Leon's Furniture
6. Fit 4 Less
7. Island Savings
8. Esso
9. Hotel Zed
10. Dodd's Furniture & Mattress
11. Dollarama
12. Mark's
13. Accent Inns

New & Future Developments





Premier Retail Exposure on Douglas Street

Unit 202 - 3214 Douglas Street | Victoria, BC

Contact Us

Jeff Lougheed
Vice President
250 386 0001
jeff.lougheed@cbre.com

Mitch Bryan
Associate
250 385 1225
mitch.bryan@cbre.com

CBRE Limited | www.cbrevictoria.com | 110-800 Yates Street, Victoria BC, V8W 1L8 | 250 386 0000

This disclaimer shall apply to CBRE Limited, Real Estate Brokerage, and to all other divisions of the Corporation; to include all employees and independent contractors ("CBRE"). The information set out herein, including, without limitation, any projections, images, opinions, assumptions and estimates obtained from third parties (the "Information") has not been verified by CBRE, and CBRE does not represent, warrant or guarantee the accuracy, correctness and completeness of the Information. CBRE does not accept or assume any responsibility or liability, direct or consequential, for the Information or the recipient's reliance upon the Information. The recipient of the Information should take such steps as the recipient may deem necessary to verify the Information prior to placing any reliance upon the Information. The Information may change and any property described in the Information may be withdrawn from the market at any time without notice or obligation to the recipient from CBRE. Content contained in this material has been generated in whole or in part by or with the assistance of generative artificial intelligence. CBRE and the CBRE logo are the service marks of CBRE Limited and/or its affiliated or related companies in other countries. All other marks displayed on this document are the property of their respective owners. All Rights Reserved.