



Retail | For Lease

Harris Green Village

UNIT 144 - 911 YATES STREET | VICTORIA, BC

GROCERY ANCHORED RETAIL OPPORTUNITY IN
DOWNTOWN VICTORIA

CBRE

Where Business Meets Community

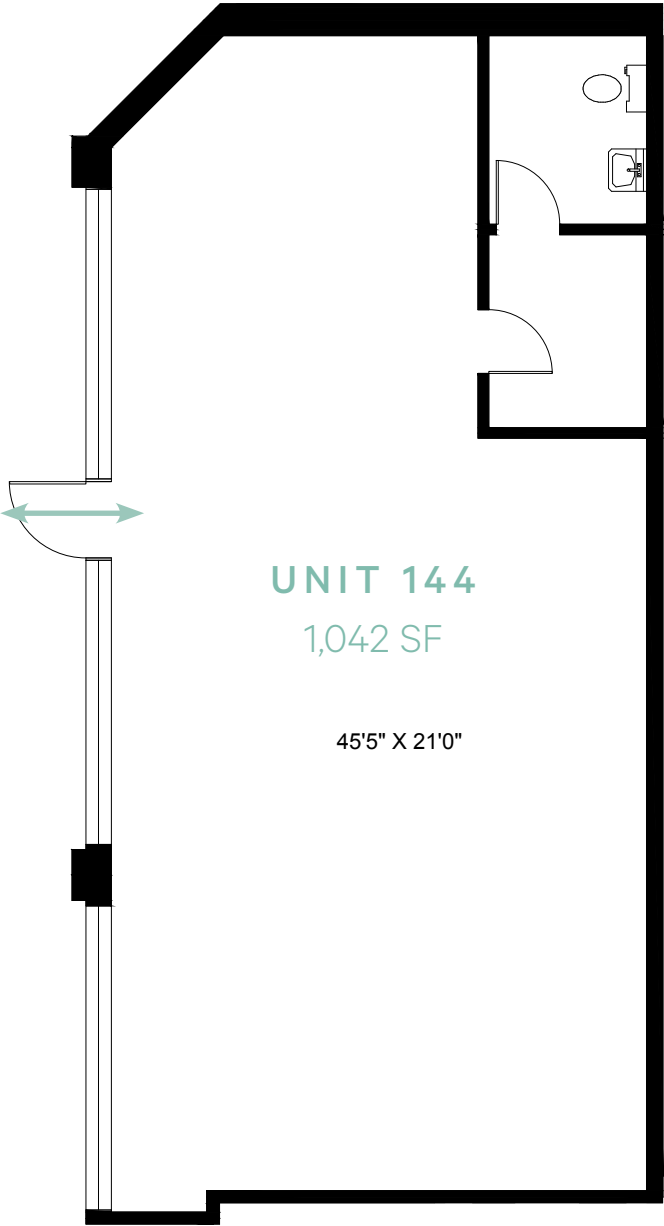
HIGHLIGHTS

- + Ample on-site parking
- + Excellent signage visibility
- + Flexible CD-18 zoning
- + Easily accessible via all modes of transportation
- + Located in Harris Green Village anchored by London Drugs and Market on Yates



VIEW ALL PERMITTED USES
CD-18 Zoning

CBRE Victoria is pleased to offer an exceptional opportunity to lease 1,042 square feet of boutique retail space in Harris Green Village, located at 911 Yates Street. Unit 144 features an open layout, complemented by a private washroom and dedicated storage area. The space boasts prominent storefront windows, excellent signage potential, and convenient on-site customer parking. Situated in a vibrant neighbourhood with steady foot and vehicle traffic, Unit 144 presents an ideal location for your next business venture.



Property Details



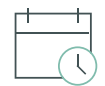
AVAILABLE AREA
1,042 SF



ASKING NET RENT
\$32.00 PSF



ADDITIONAL RENT
\$24.54 PSF



AVAILABILITY
Immediate



ZONING
CD-18 Harris Green
Comprehensive
Development District



PARKING
73 on-site surface parking stalls

Unit 144 - 911 Yates Street
Victoria, BC

Location

Cafes + Restaurants

- 1. OEB Breakfast Co
- 2. The Poke Lounge
- 3. Boomtown
- 4. Cobs Bread
- 5. Basic Cafe
- 6. Bin 4 Burger Lounge
- 7. Moxies Victoria
- 8. Ox King Noodles
- 9. J & J Wonton Noodle House
- 10. Picnic Too
- 11. Cafe Brio
- 12. Sen Zushi
- 13. Blue Fox Cafe
- 14. Thai Food Near Me
- 15. Sookjai Thai Restaurant

New & Upcoming Developments



★ **Subject**
Unit 144 - 911 Yates Street | Victoria, BC

Shopping + Services

- 1. Market On Yates
- 2. BestCoast Outfitters
- 3. Big O Tires
- 4. Bosley's
- 5. Sakura Sushi and Grocery
- 6. London Drugs
- 7. Atlas Audio Video Unlimited
- 8. The UPS Store
- 9. Frontrunners Footwear
- 10. Harris Green Liquor
- 11. Cuban Cigar Shop
- 12. Suits U Athletics
- 13. Idar

99



Daily errands do not require a car.

91



EXCELLENT TRANSIT

Transit convenient for most trips.

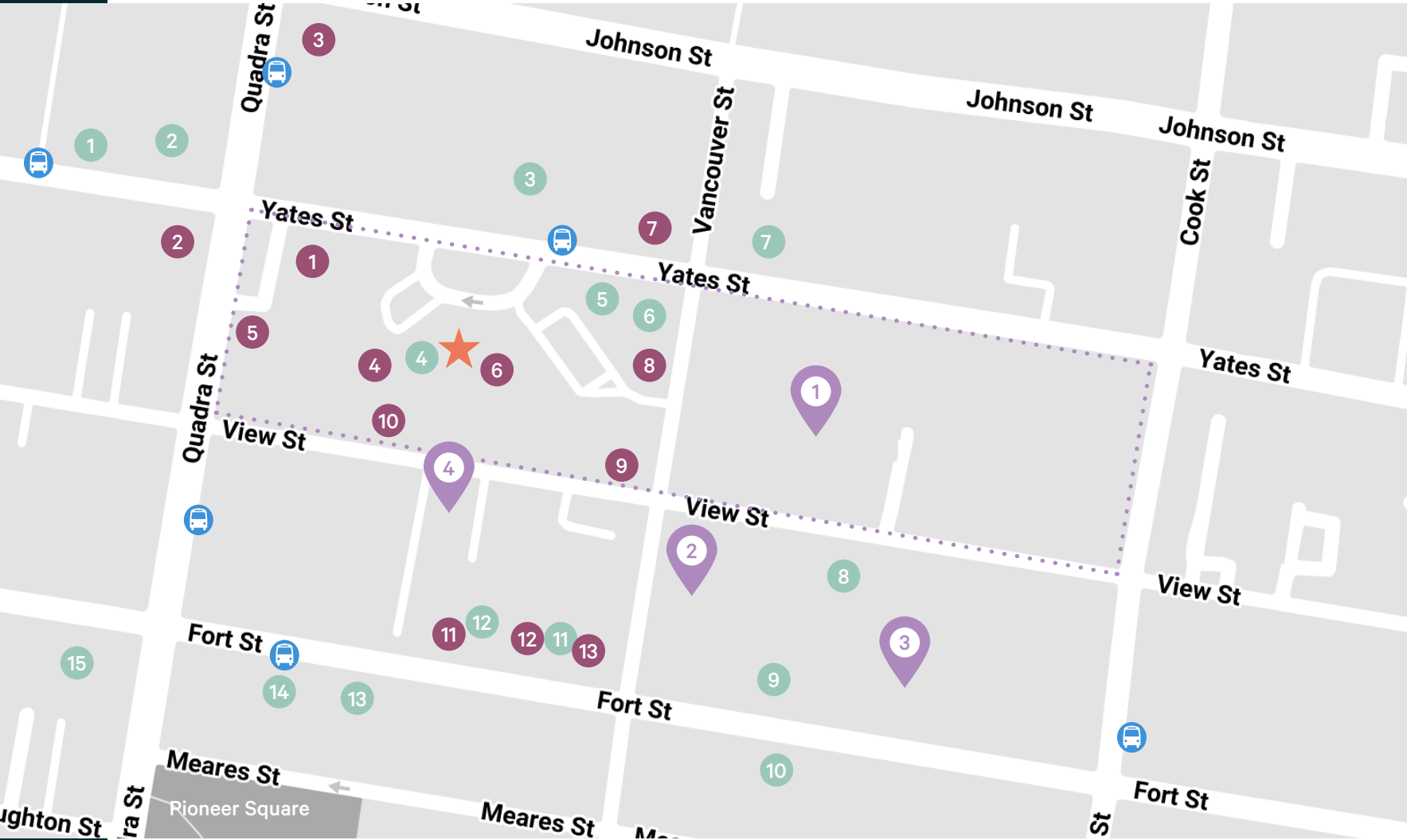
98



BIKER'S PARADISE

Daily errands can be accomplished on a bike.

SOURCE: WALUSCORE.COM



GROCERY ANCHORED RETAIL OPPORTUNITY IN
DOWNTOWN VICTORIA

CBRE

Unit 144

911 YATES STREET | VICTORIA, BC



CONTACT US

Mitch Bryan

Associate
mitch.bryan@cbre.com
250 385 1225

Jeff Lougheed

Vice President
jeff.lougheed@cbre.com
250 386 0001

CBRE Limited | www.cbrevictoria.com | 110-800 Yates Street, Victoria, BC, V8W 1L8 | 250 386 0000

This disclaimer shall apply to CBRE Limited, Real Estate Brokerage, and to all other divisions of the Corporation; to include all employees and independent contractors ("CBRE"). The information set out herein, including, without limitation, any projections, images, opinions, assumptions and estimates obtained from third parties (the "Information") has not been verified by CBRE, and CBRE does not represent, warrant or guarantee the accuracy, correctness and completeness of the Information. CBRE does not accept or assume any responsibility or liability, direct or consequential, for the Information or the recipient's reliance upon the Information. The recipient of the Information should take such steps as the recipient may deem necessary to verify the Information prior to placing any reliance upon the Information. The Information may change and any property described in the Information may be withdrawn from the market at any time without notice or obligation to the recipient from CBRE. CBRE and the CBRE logo are the service marks of CBRE Limited and/or its affiliated or related companies in other countries. All other marks displayed on this document are the property of their respective owners. All Rights Reserved. Mapping Sources: Canadian Mapping Services canadamapping@cbre.com; DMTI Spatial, EnviroNics Analytics, Microsoft Bing, Google Earth.