



6,930-14,018 SF OF OFFICE FOR LEASE

# 1205

*broad street*

*Discover the Heart of Victoria at*  
**BroadView Block**

VICTORIA | BC

# 1205

*broad street*

## BROADVIEW BLOCK

The Broadview Block is a premier office and retail building situated in the heart of Victoria's historic downtown. Constructed between 1956 and 1957 by the Dominion Company as Victoria's first Canada Trust bank, it features striking board-formed concrete with exposed walls and ceilings in various areas.

As one of the finest examples of mid-century modern architecture in the historic district, the Broadview Block is located at the northeast corner of Broad and View Streets, serving as a gateway to the Broad Street Arts District, nestled between Government and Douglas High Streets.

View Street, an extension of Victoria's iconic Bastion Square, is one of the city's busiest pedestrian pathways, ranking third in foot traffic according to the Downtown Victoria Business Association. The corner of Broad and View is one of the most prominent locations in Victoria.

6,930-14,018 SF | Office Availability

*Discover Victoria's Core at*  
**BroadView Block**



# OFFICE OVERVIEW

## BROADVIEW BLOCK

BroadView Block is thoughtfully designed for any office user. Each floor is equipped with private washrooms, a kitchenette/staff area, a boardroom, open workspace, and partitioned offices. Tenants will benefit from bicycle storage, ample natural light, and a vast array of amenities nearby. Commuting is a breeze with underground parking just one minute away, several bike lanes, and transit stops throughout the area.

- Turn-key units with excellent layouts
- Signage opportunities & ample natural light
- Renewed common areas & stairwells
- Direct elevator access to each unit

*Total Available Office*

*14,018 SF*

Unit 200                      6,930 SF

Unit 300                      7,088 SF





View Street frontage of property



Interior office rendering



Interior office



Interior office kitchen

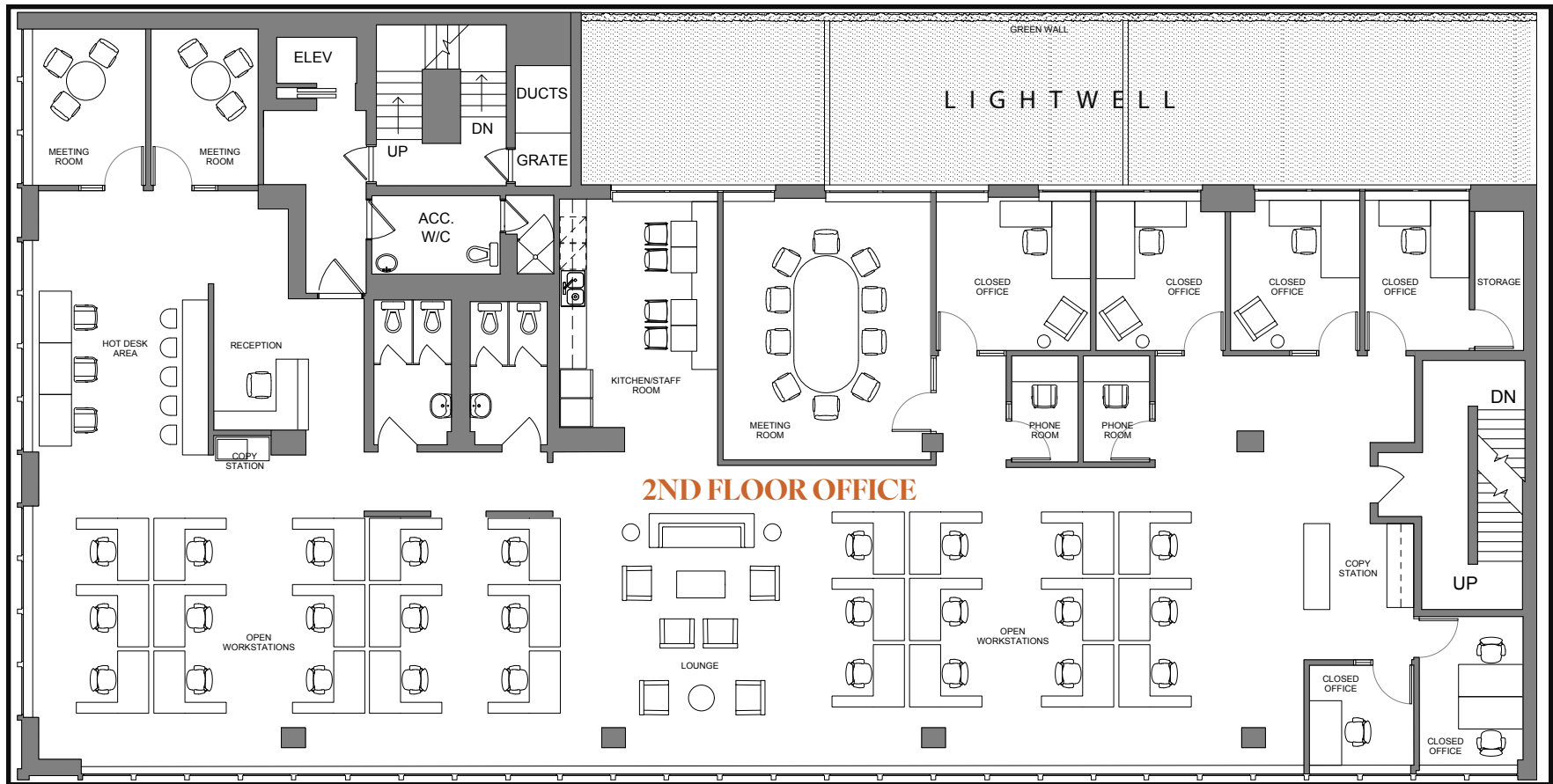


TAKE A LOOK INSIDE!

*Cityscape Views  
&  
Convenient Connectivity*

# FLOOR PLAN

OFFICE - 2ND FLOOR



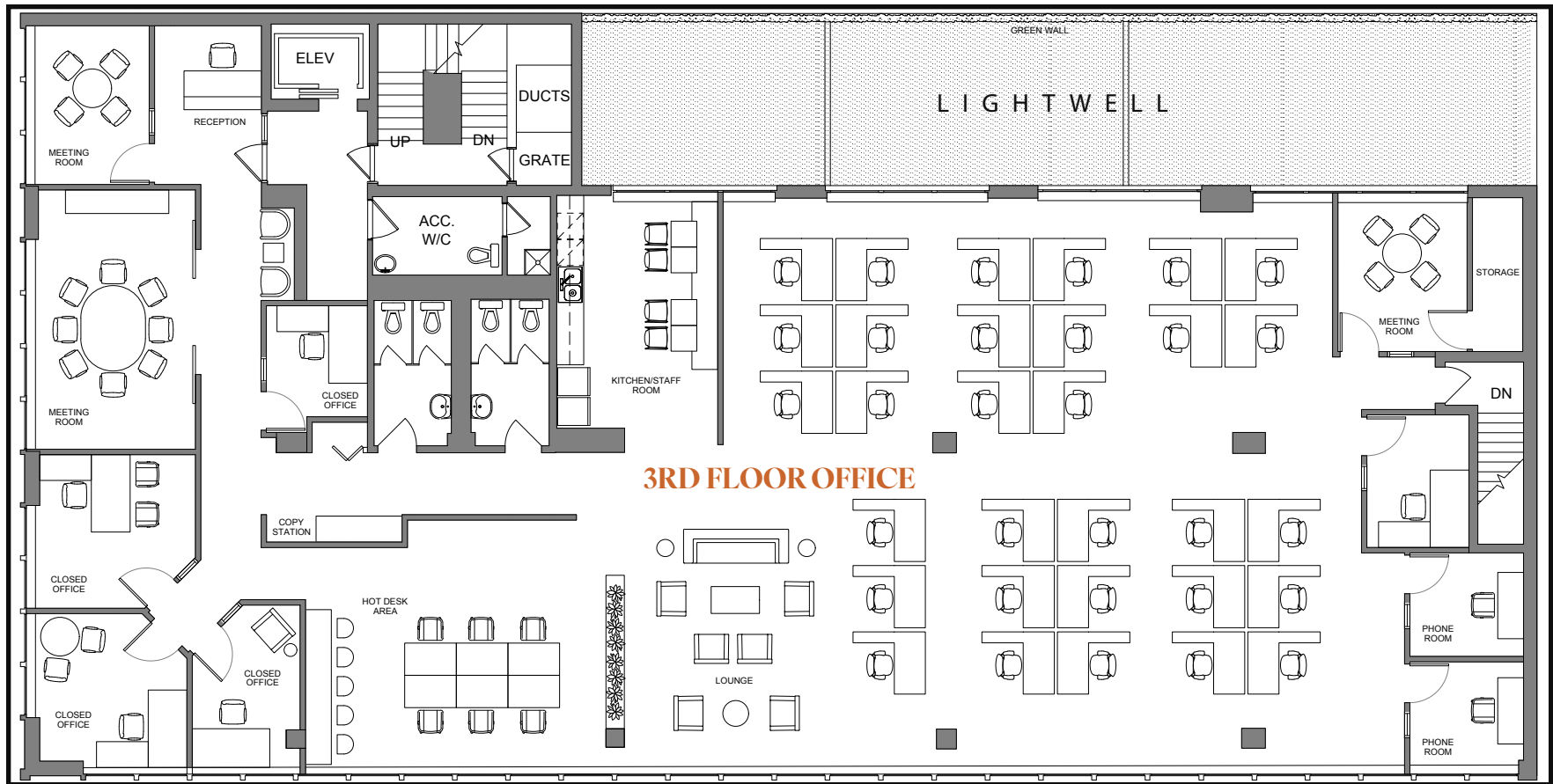
*Unit 200*

*6,930 SF*

- Ample natural light coming from three sides of the unit
- Open workspace with kitchenette area and private washrooms
- Both floors of office can be combined into one unit for 13,617 square feet

# FLOOR PLAN

OFFICE - 3RD FLOOR



*Unit 300*

*7,088 SF*

- Ample natural light coming from three sides of the unit
- Open workspace with kitchenette area and private washrooms
- Both floors of office can be combined into one unit for 13,617 square feet

## VICTORIA | BC

73  
restaurants

21  
clothing & shoe retailers

26  
cafes

1,115  
parking spots

# BROADVIEW BLOCK

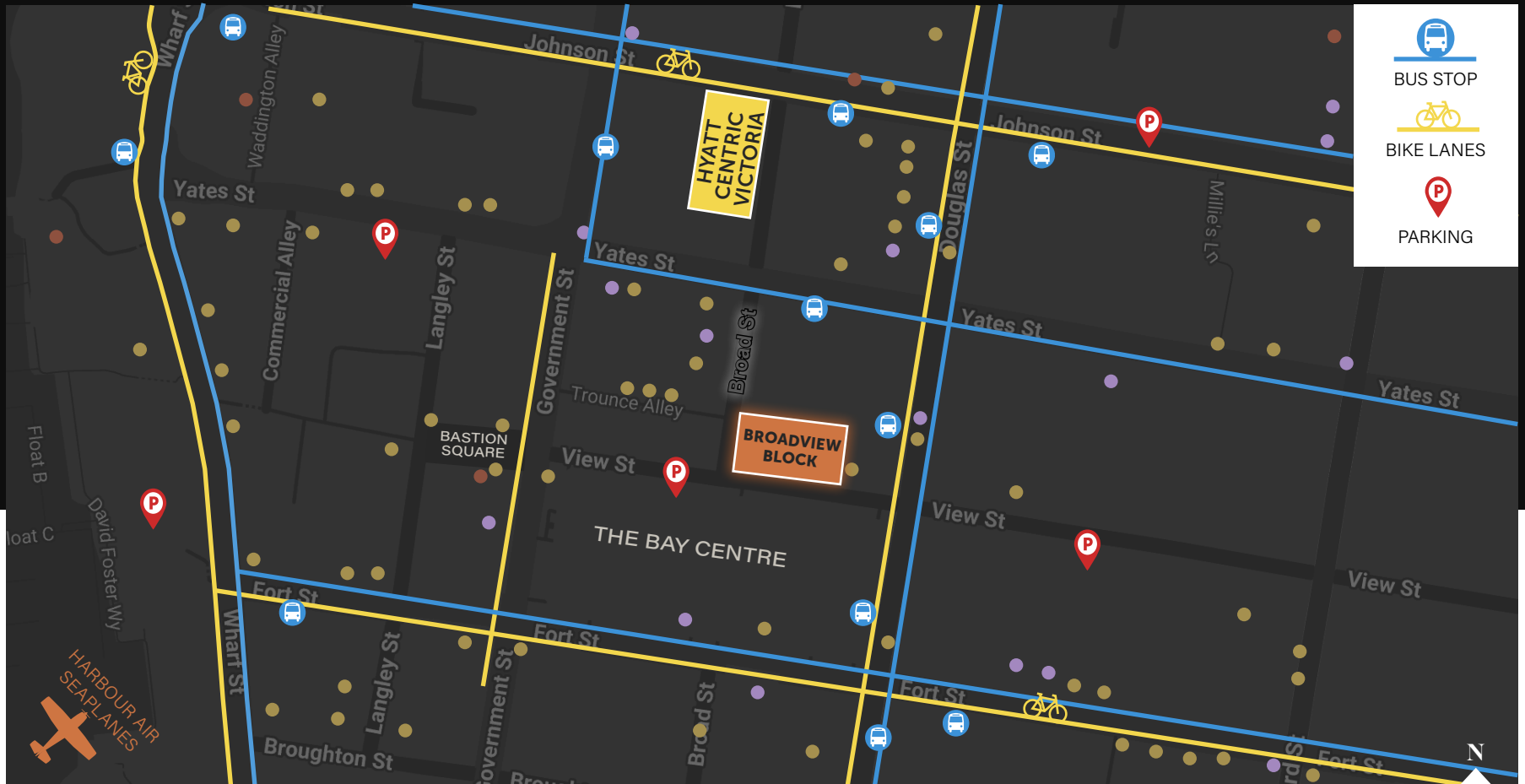


NEARBY RETAIL





# MAP


## BROADVIEW BLOCK



- RESTAURANT
- CAFES
- HOTEL

  
**25**  
 minutes  
 TO LANGFORD

  
**35**  
 minutes  
 TO VICTORIA  
 INTERNATIONAL  
 AIRPORT

  
**40**  
 minutes  
 TO BC FERRIES

  
**1,115**  
 parking stalls  
 300M RADIUS

848-1,420 OF RETAIL SPACE FOR LEASE  
6,930-14,018 SF OF OFFICE FOR LEASE

# 1205

*broad street*

*Discover the Heart of Victoria at*  
**BroadView Block**

JEFF LOUGHEED  
Vice President

250 386 0001  
[jeff.lougheed@cbre.com](mailto:jeff.lougheed@cbre.com)

ANDREA TEAHEN  
Senior Associate

250 813 3377  
[andrea.teahen@cbre.com](mailto:andrea.teahen@cbre.com)

MITCH BRYAN  
Associate

250 385 1225  
[mitch.bryan@cbre.com](mailto:mitch.bryan@cbre.com)

**CBRE**

 SALIENT

This disclaimer shall apply to CBRE Limited, Real Estate Brokerage, and to all other divisions of the Corporation; to include all employees and independent contractors ("CBRE"). The information set out herein, including, without limitation, any projections, images, opinions, assumptions and estimates obtained from third parties (the "Information") has not been verified by CBRE, and CBRE does not represent, warrant or guarantee the accuracy, correctness and completeness of the Information. CBRE does not accept or assume any responsibility or liability, direct or consequential, for the Information or the recipient's reliance upon the Information. The recipient of the Information should take such steps as the recipient may deem necessary to verify the Information prior to placing any reliance upon the Information. The Information may change and any property described in the Information may be withdrawn from the market at any time without notice or obligation to the recipient from CBRE. CBRE and the CBRE logo are the service marks of CBRE Limited and/or its affiliated or related companies in other countries. All other marks displayed on this document are the property of their respective owners. All Rights Reserved.

Mapping Sources: Canadian Mapping Services [canadamapping@cbre.com](mailto:canadamapping@cbre.com); DMTI Spatial, Envionics Analytics, Microsoft Bing, Google Earth.