

# For Sale

OWNER-OCCUPIER / DEVELOPMENT  
OPPORTUNITY WITH HOLDING INCOME  
COMMERCIAL BUILDING & LAND

4520 WEST SAANICH RD | SAANICH, BC

CBRE





# The Offering

CBRE Limited is pleased to present for sale 4520 West Saanich Road in Saanich, BC. This 3,329 SF standalone commercial building is exceptionally well located, steps from the Royal Oak Shopping Centre. The modern interior is currently configured with two floors of office space, both occupied with flexible tenancies. There are 18 paved surface parking stalls on site. The Property is designated as a Transit Oriented Area in the 400m ring, and a primary growth area in the Saanich OCP providing significant development potential. There is the potential to purchase with vacant possession for owner/occupiers, or maintain the tenancies to provide holding income.

## SALIENT DETAILS

<b>Address:</b>	4520 W. Saanich Road   Saanich, BC		
<b>Legal Desc.</b>	Lot 1, Section 9, Lake District, Plan 2803,		
<b>PID:</b>	006-398-928		
<b>Building Size:</b>	Main:	1,909 SF	
	Upper:	1,265 SF	
	Lower Storage:	155 SF	
	Total:	3,329 SF	
<b>Land Size:</b>	9,450 SF		
<b>Roof:</b>	Asphalt Shingle		
<b>Heat:</b>	Forced Air - Oil Fired Furnace		
<b>Parking:</b>	18 Surface Parking Stalls		
<b>Zoning:</b>	C2 - General Commercial		
<b>OCP:</b>	• Primary Growth Area		
	• 400m Transit Oriented Site		
<b>Property Taxes:</b>	\$23,475 (2025)		

## Highlights

- 3,329 SF 2 storey office building
- 9,450 SF of land
- Modern finishings
- Main level has 5 private offices, reception, break room / kitchenette, and large meeting room
- Upper level has 5 private offices, printing area and a reception
- Lower storage rooms
- 18 paved surface parking stalls
- Prominent signage opportunities
- Flexible C2 zoning
- TOA 400m site, primary growth area in OCP
- Current tenancies are flexible providing purchasers the opportunity to occupy

**Price: \$2,200,000**

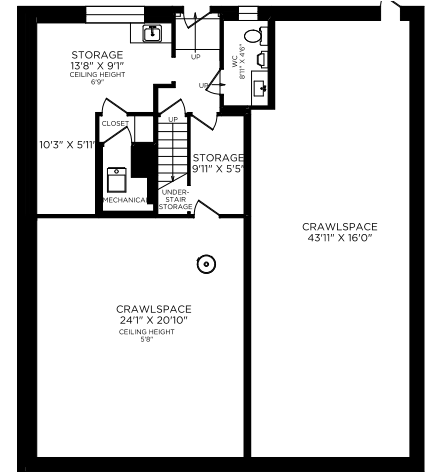
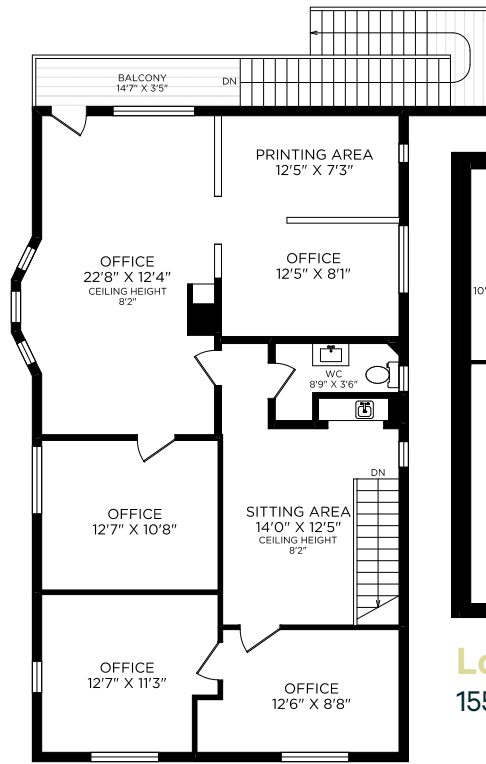
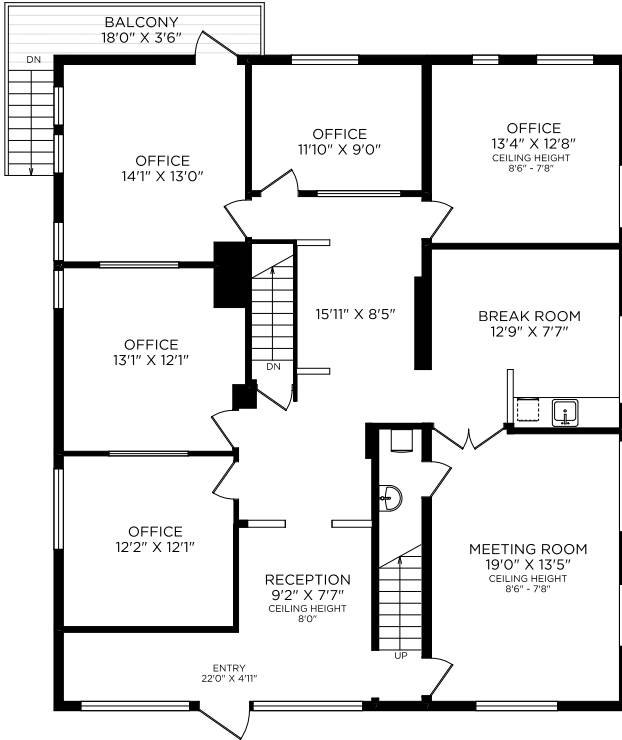


**RECEPTION**



**BOARDROOM**

# Floor Plans



## Zoning + OCP

<b>Municipality:</b>	Saanich (Royal Oak)
<b>Current Zoning:</b>	C2 General Commercial
<b>Permitted Uses:</b> (Including, but not limited to)	<ul style="list-style-type: none"> <li>• Retail Sales</li> <li>• Wholesaling</li> <li>• Medical Services</li> <li>• Personal Service</li> <li>• Office</li> <li>• Restaurant</li> <li>• Assembly</li> <li>• Apartment</li> <li>• Daycare</li> </ul>

<b>OCP Designation:</b>	Primary Growth Area   Royal Oak Centre
<b>OCP Density:</b>	Up to 12 Storeys (No FAR Provided)
<b>Provincial TOA:</b>	Yes - Royal Oak Exchange (400m)
<b>TOA Density:</b>	2.5:1 FAR   6 Storeys (Minimum)*

\*While Provincial TOA density provisions are described as minimums, initial conversations with the Municipality point to their willingness to entertain development at density levels below the described threshold.





### SAANICH COMMONWEALTH PLACE

- Swimming
- Recreation
- Fitness

SAANICH 400M TOA RING

### ROYAL OAK MIDDLE SCHOOL

### SUBJECT PROPERTY

### BROADMEAD SHOPPING CENTRE

- BC Liquor
- Canadian Tire
- Thrifty Foods
- Pets West
- Pharmasave
- Much More...

### ROYAL OAK SHOPPING CENTRE

- Country Grocer
- Bosley's
- Tim Hortons
- Cobs Bread
- Saanich Physio
- Much More...

DOWNTOWN VICTORIA  
15 MIN DRIVE

**Price: \$2,200,000**

## OWNER-OCCUPIER / DEVELOPMENT OPPORTUNITY WITH HOLDING INCOME

4520 WEST SAANICH ROAD | SAANICH, BC

### EXCLUSIVE ADVISORS:

#### Chris Rust

Personal Real Estate Corporation  
Senior Vice President  
Investment Properties Group Victoria  
250 386 0005  
chris.rust@cbre.com

#### Ross Marshall

Personal Real Estate Corporation  
Senior Vice President  
Investment Properties Group Victoria  
250 386 0004  
ross.marshall@cbre.com

#### Cooper Anderson

Sales Associate  
Investment Properties Group Victoria  
250 386 0276  
cooper.anderson@cbre.com

### SPECIALIZING IN INVESTMENT & DEVELOPMENT PROPERTY

**CBRE Limited | 110-800 Yates Street, Victoria, BC V8W 1L8 | 250 386 0000**

**CBRE**

[www.cbre.ca](http://www.cbre.ca)

[www.cbrevictoria.com](http://www.cbrevictoria.com)

This disclaimer shall apply to CBRE Limited, Real Estate Brokerage, and to all other divisions of the Corporation; to include all employees and independent contractors ("CBRE"). The information set out herein, including, without limitation, any projections, images, opinions, assumptions and estimates obtained from third parties (the "Information") has not been verified by CBRE and CBRE does not represent, warrant or guarantee the accuracy, correctness and completeness of the Information. CBRE does not accept or assume any responsibility or liability, direct or consequential, for the information or the recipient's reliance upon the Information. The recipient of the Information should take such steps as the recipient may deem necessary to verify the Information prior to placing any reliance upon the Information. The Information may change and any property described in the Information may be withdrawn from the market at any time without notice or obligation to the recipient from CBRE. CBRE and the CBRE logo are the service marks of CBRE Limited and/or its affiliated or related companies in other countries. All other marks displayed on this document are the property of their respective owners. All Rights Reserved. Mapping Sources: Canadian Mapping Services [canadamapping@cbre.com](mailto:canadamapping@cbre.com); DMTI Spatial, Envision Analytics, Microsoft Bing, Google Earth.