



Westside Village Office Opportunity

Unit 210 - 174 Wilson Street | Victoria, BC

For Sublease

CBRE

Convenient Connection

CBRE Victoria is pleased to present the opportunity to sublease prime office space in Westside Village. Located at Unit 210 at 174 Wilson Street, this 5,935 square unit features 19 private offices, two large boardrooms, three private washrooms, a private shower, reception space, and a waiting area. The design of the buildout allows for an abundance of natural light and a functional layout. Tenants will enjoy ample on-site parking and the numerous onsite amenities that Westside Village provides, including Starbucks, Big Wheel Burger, Victoria Sushi, Browns Craffhouse, Save-On-Foods, Booster Juice, and many more. With flexible SNC zoning, Unit 210 can accommodate a variety of business uses.



Highlights



Abundance of natural light



10 included parking stalls plus ample on-site customer stalls



Signage opportunities



19 private offices, 2 boardrooms, & 3 private washrooms

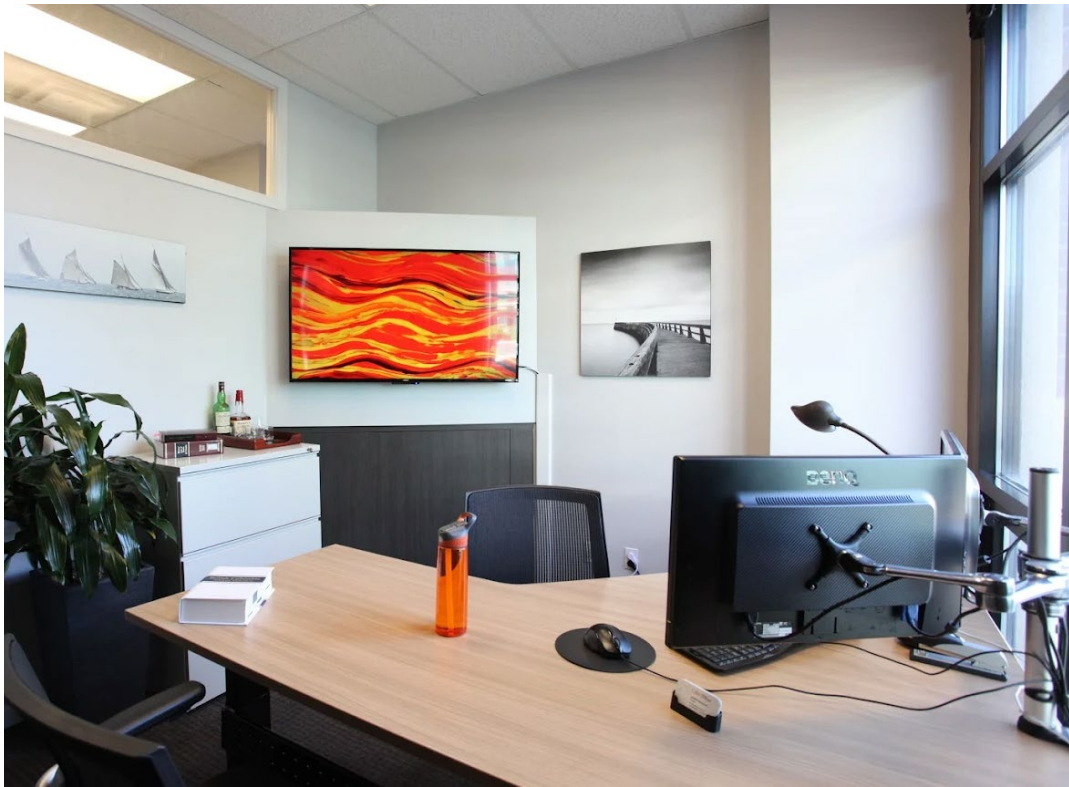
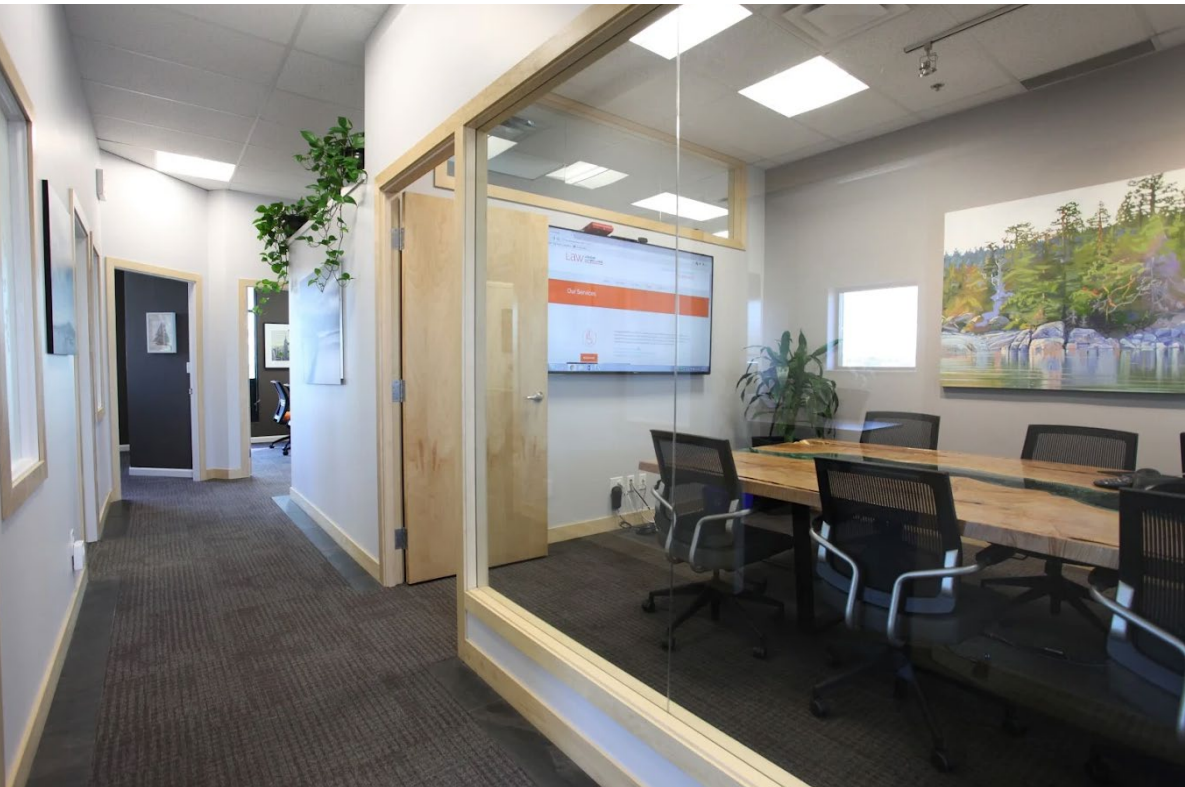
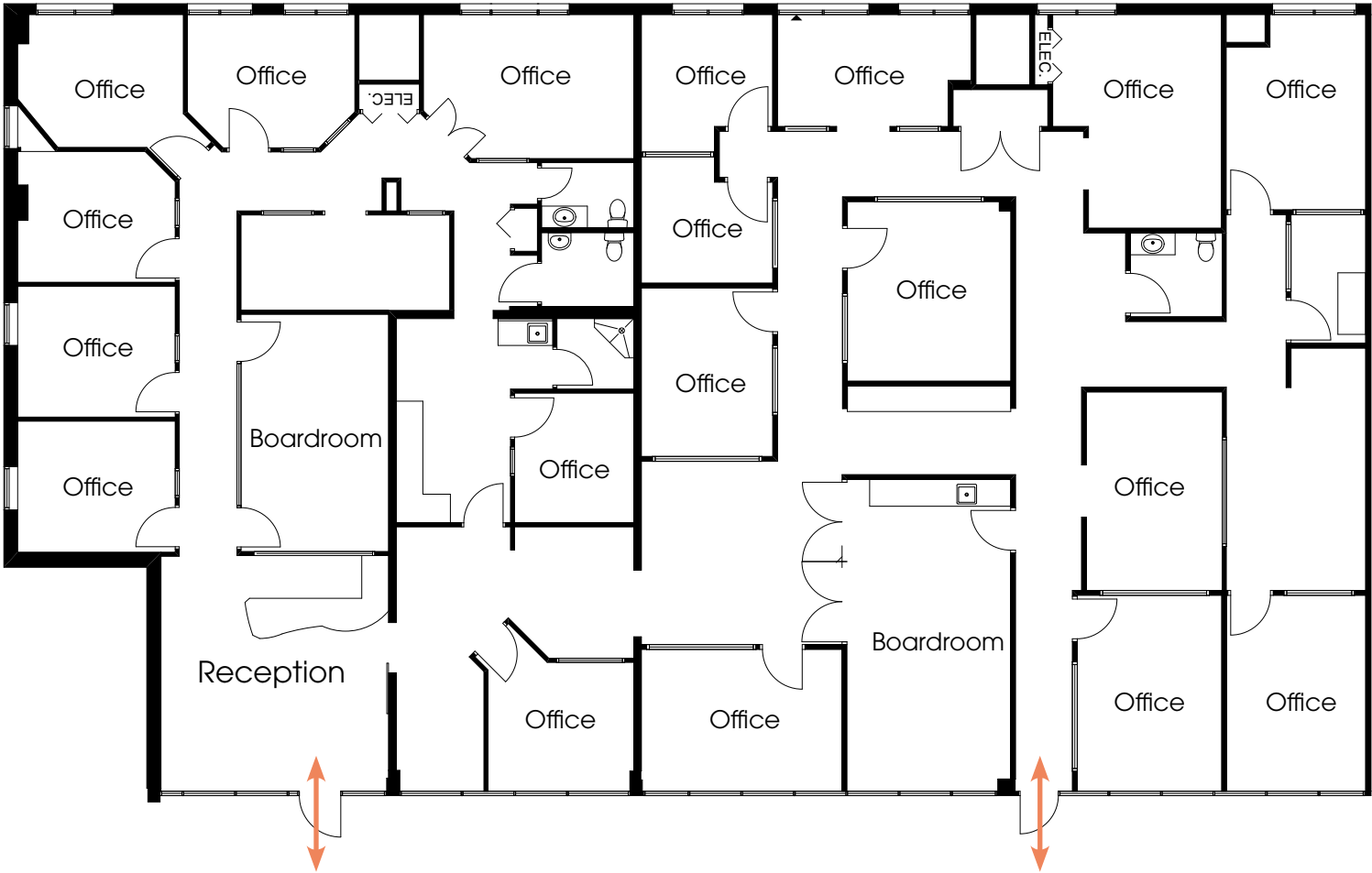


Located in Westside Village with numerous on-site amenities




Details

Address	Unit 210 - 174 Wilson Street, Victoria BC
Size	5,935 SF
Sublease Rate	Contact Listing Agents
Additional Rent	\$23.39 PSF
Sublease Term	Until May 31, 2028
Parking	10 stalls included plus ample customer parking
Zoning	SNC-1C Zone: Songhees Wilson Commercial District





Drive Times


5 MIN
to Downtown Victoria


18 MIN
to Langford


28 MIN
to Victoria International Airport


35 MIN
to BC Ferries

Victoria West Park

Westside Village

- | | | |
|----------------------|----------------------|---------------------------------|
| 1. Browns Crafthouse | 7. Starbucks | 13. Pharmasave |
| 2. Pitaland | 8. Big Wheel Burger | 14. Spinnakers Spirit Merchants |
| 3. Hot House Pizza | 9. Flight Cannabis | 15. Westland Insurance |
| 4. Victoria Sushi | 10. For Pet's Sake | 16. WIN Resale Shop |
| 5. Booster Juice | 11. Dollarama | 17. Save-On-Foods |
| 6. La Taquis | 12. Supplement World | 18. LifeLabs |



Westside Village Office Opportunities

Unit 210 - 174 Wilson Street | Victoria, BC

Contact Us

Jeff Lougheed
Vice President
250 386 0001
jeff.lougheed@cbre.com

Andrea Teahen
Senior Associate
250 813 3377
andrea.teahen@cbre.com

CBRE Limited | www.cbrevictoria.com | 110-800 Yates Street, Victoria BC, V8W 1L8 | 250 386 0000

CBRE

This disclaimer shall apply to CBRE Limited, Real Estate Brokerage, and to all other divisions of the Corporation; to include all employees and independent contractors ("CBRE"). The information set out herein, including, without limitation, any projections, images, opinions, assumptions and estimates obtained from third parties (the "Information") has not been verified by CBRE, and CBRE does not represent, warrant or guarantee the accuracy, correctness and completeness of the Information. CBRE does not accept or assume any responsibility or liability, direct or consequential, for the Information or the recipient's reliance upon the Information. The recipient of the Information should take such steps as the recipient may deem necessary to verify the Information prior to placing any reliance upon the Information. The Information may change and any property described in the Information may be withdrawn from the market at any time without notice or obligation to the recipient from CBRE. CBRE and the CBRE logo are the service marks of CBRE Limited and/or its affiliated or related companies in other countries. All other marks displayed on this document are the property of their respective owners. All Rights Reserved.