

Join Victoria's Historic Hudson District

LEASING OPPORTUNITIES

HUDSON DISTRICT

HUDSON MEWS

UNIT 110 - 780 FISGARD STREET
OFFICE/RETAIL OPPORTUNITY

Details

SIZE

2,172 SF

LEASE RATE

Contact Listing Agents

ADDITIONAL RENT

\$19.00 PSF

AVAILABLE

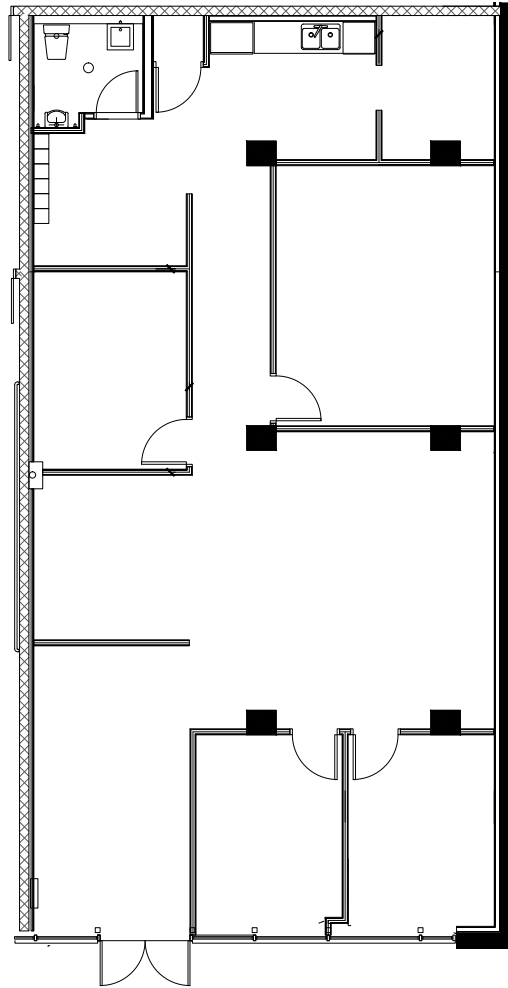
Immediately

ZONING

CBD-2: Central Business District
2 - Site Specific

PARKING

32 commercial stalls



Highlights

- ★ Currently configured with 3 offices, meeting room, kitchen, & reception area - can be reconfigured to suit tenants needs
- ★ Unit can be built out for retail/food/service use



Unit 110

HUDSON MEWS

UNIT 120 - 780 FISGARD STREET
OFFICE OPPORTUNITY

Details

SIZE

2,429 SF

LEASE RATE

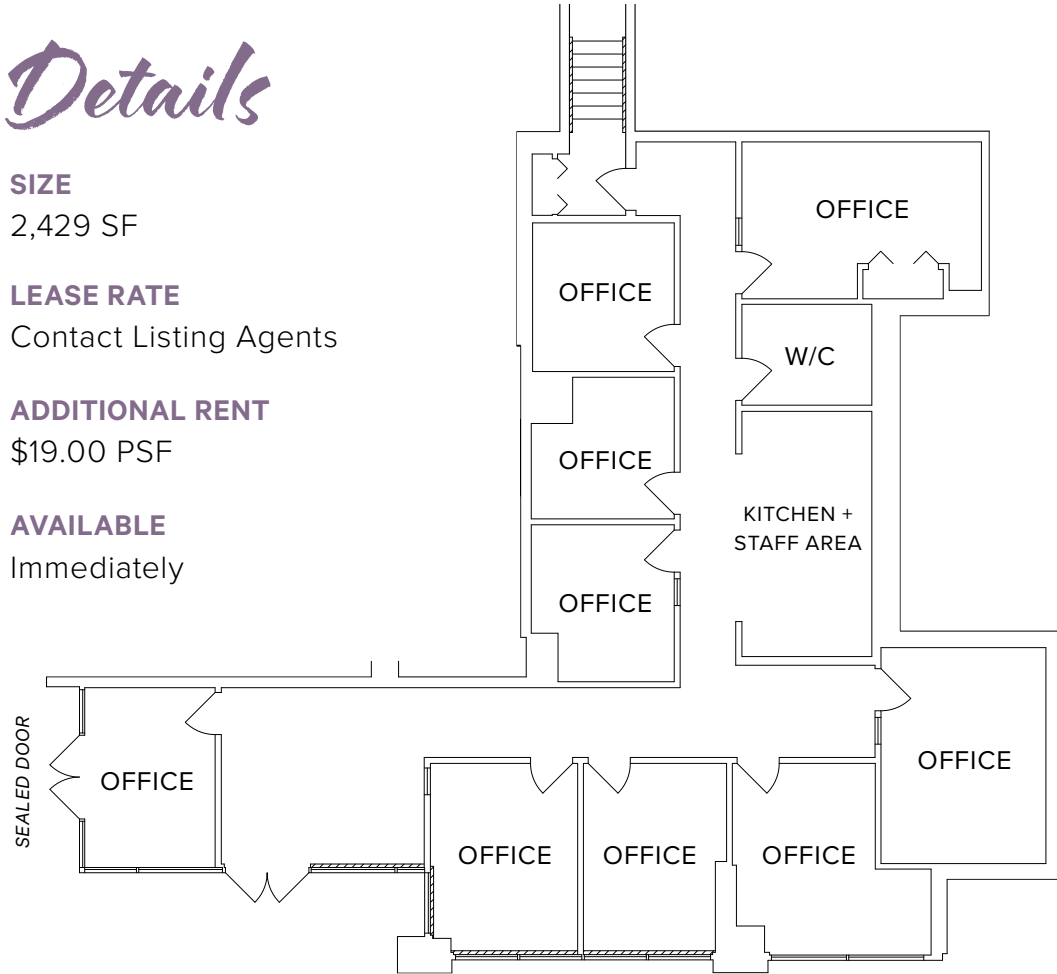
Contact Listing Agents

ADDITIONAL RENT

\$19.00 PSF

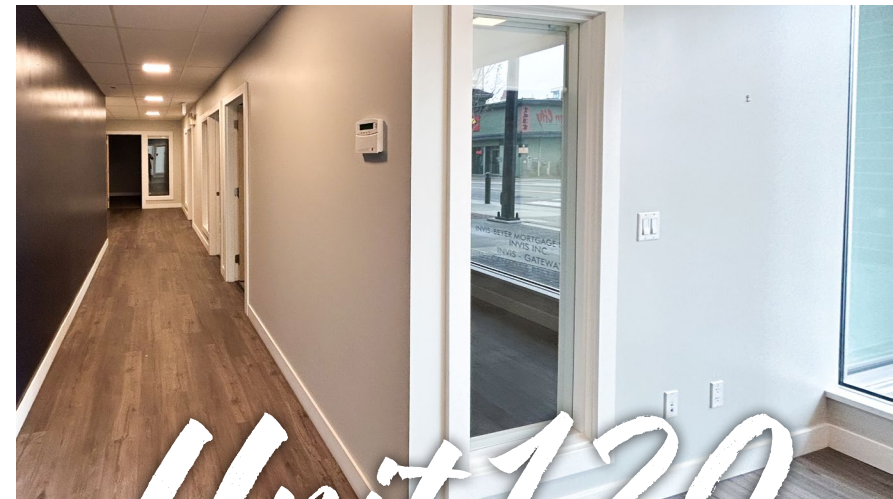
AVAILABLE

Immediately



Highlights

- ★ Currently configured with 9 offices, 1 private washroom, kitchen, & staff area
- can be reconfigured to suit tenants needs



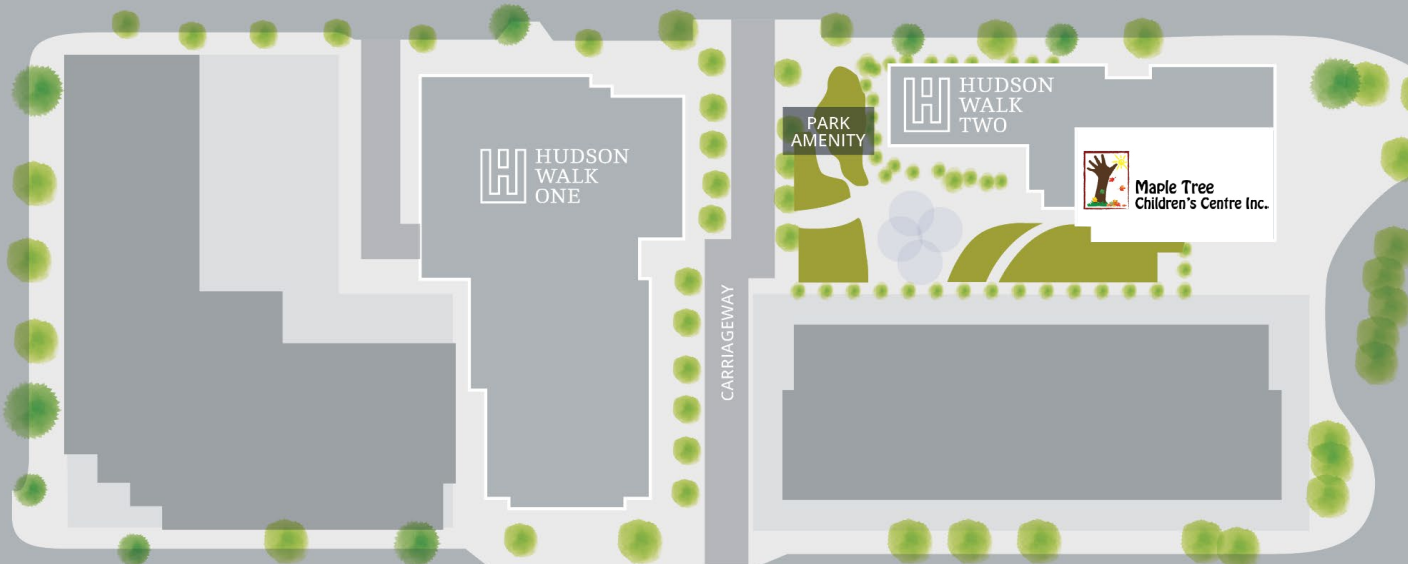
Unit 120

HUDSON DISTRICT

Site Plan

CALEDONIA AVENUE

DOUGLAS STREET



HERALD STREET



FISGARD STREET

BLANSHARD STREET

Highlights

- ★ Over 977 existing residential units
- ★ Easily accessible via all modes of transportation
- ★ Demisable & flexible units
- ★ Strong & diverse existing tenant mix

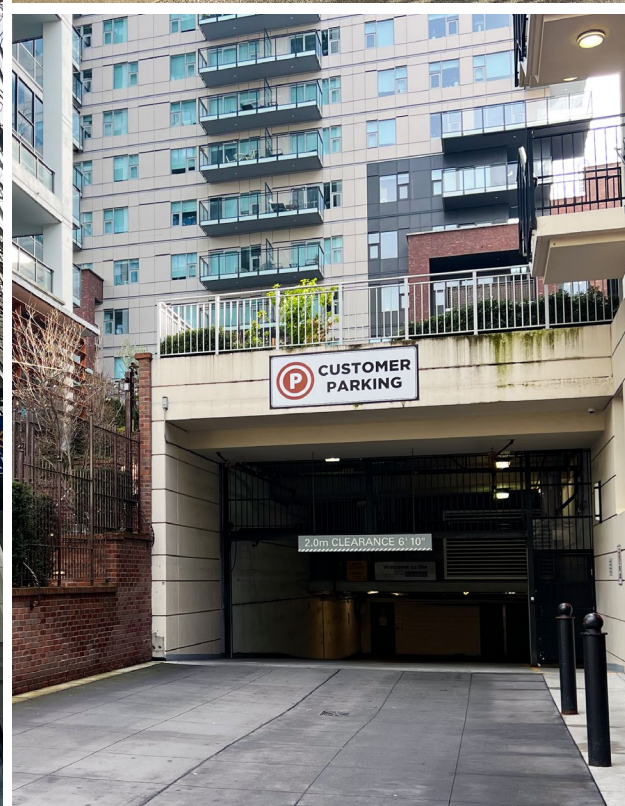
Available Units

HUDSON MEWS

- UNIT 110 (OFFICE)
- UNIT 120 (OFFICE)

HUDSON HOUSE

- UNIT 101 (RETAIL)





Location

The Hudson District spans two blocks in Victoria's downtown core, surrounded by four main roadways: Caledonia Avenue, Blanshard Street, Fisgard Street, and Douglas Street. The district is highly accessible via all modes of transportation and is conveniently located just steps away from several downtown amenities, including the Victoria Public Market, Harbour Air, Save-On-Foods Memorial Centre, Centennial Square, Market Square, and The Bay Centre. Surrounding the Hudson District is a plethora of restaurants, shops, cafes, and services, making it convenient for both living and working in the area.



The people - 1 km radius



17,580
Population



3,849
Households



72.5%
Labour force
participation



\$79,312
Avg. Household
Income

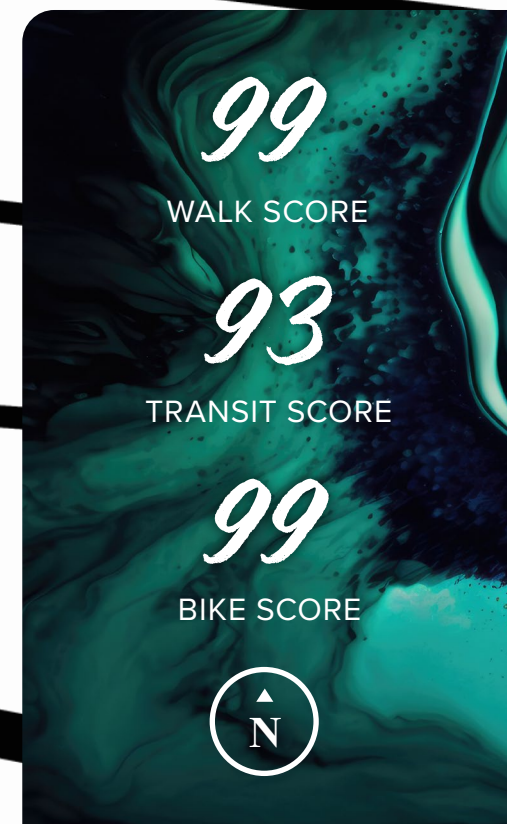
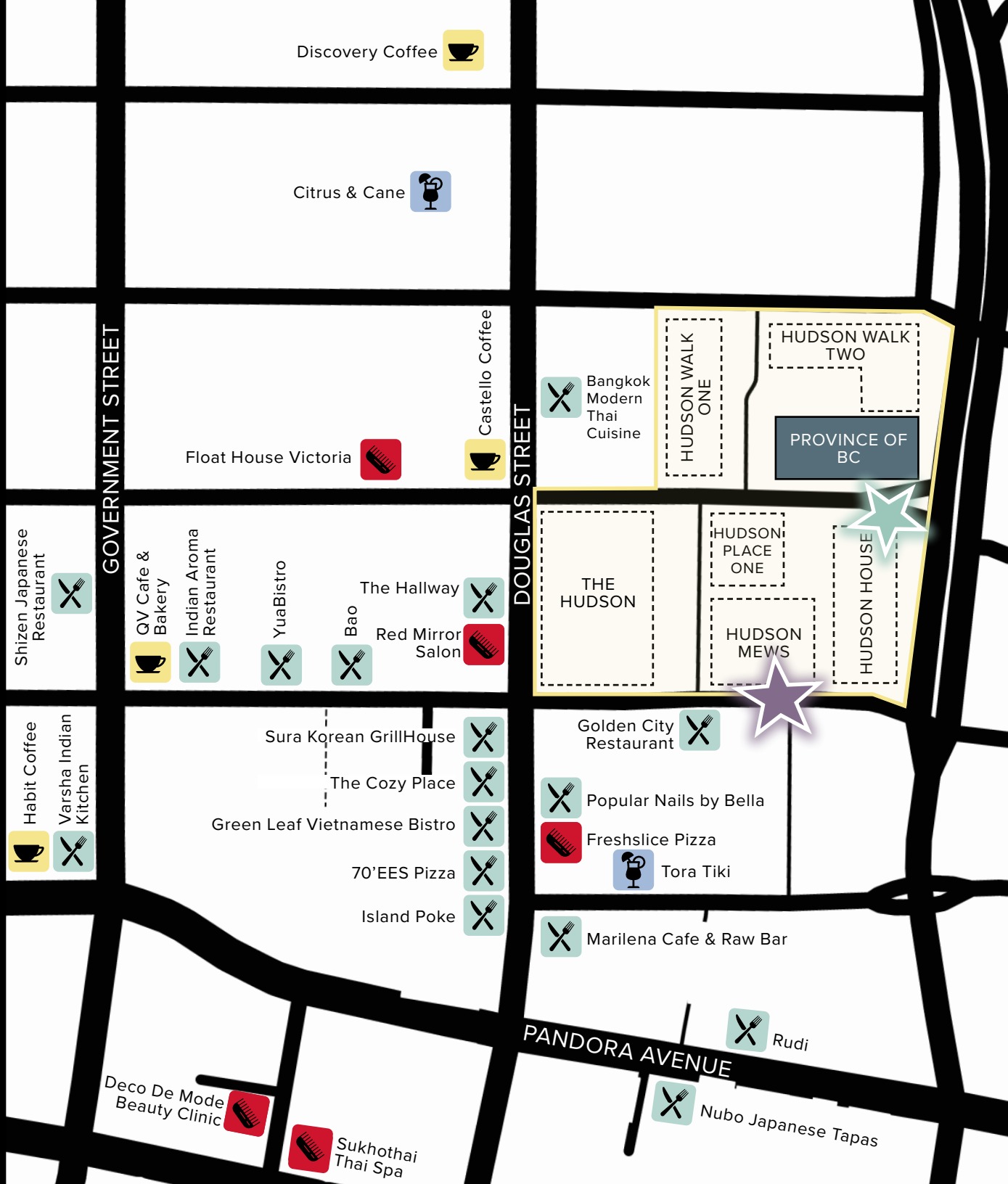


56.8%
Of population
between ages
20-44



39.3%
Education University
Degree

THE NEIGHBOURHOOD



HUDSON DISTRICT

HUDSON PLACE ONE

THE HUDSON

HUDSON WALK TWO

HUDSON MEWS

HUDSON
WALK
ONE

FOR LEASING OPPORTUNITIES

Jeff Lougheed

Vice President

jeff.lougheed@cbre.com

250 386 0001

Mitch Bryan

Associate

mitch.bryan@cbre.com

250 385 1225

HUDSON HOUSE

CBRE Limited
800 Yates Street #110 | Victoria, BC
www.cbrevictoria.com

CBRE  **TOWNLINE**

This disclaimer shall apply to CBRE Limited, Real Estate Brokerage, and to all other divisions of the Corporation; to include all employees and independent contractors ("CBRE"). The information set out herein, including, without limitation, any projections, images, opinions, assumptions and estimates obtained from third parties (the "Information") has not been verified by CBRE, and CBRE does not represent, warrant or guarantee the accuracy, correctness and completeness of the Information. CBRE does not accept or assume any responsibility or liability, direct or consequential, for the Information or the recipient's reliance upon the Information. The recipient of the Information should take such steps as the recipient may deem necessary to verify the Information prior to placing any reliance upon the Information. The Information may change and any property described in the Information may be withdrawn from the market at any time without notice or obligation to the recipient from CBRE. CBRE and the CBRE logo are the service marks of CBRE Limited and/or its affiliated or related companies in other countries. All other marks displayed on this document are the property of their respective owners. All Rights Reserved.

Mapping Sources: Canadian Mapping Services canadamapping@cbre.com; DMTI Spatial, Environics Analytics, Microsoft Bing, Google Earth.