



Join the Vibrant Lower Pandora Avenue

556B Pandora Avenue | Retail Opportunity

FOR LEASE

CBRE



Vibrant Pandora

Retail Opportunity | For Lease

CBRE Victoria is pleased to present a unique retail lease opportunity. Located at 556B Pandora Avenue in a vibrant part of Downtown Victoria and Chinatown. This unit has 2,061 square feet of open space, one private washroom, and a mezzanine area. Steps away from the historic Fan Tan Alley and neighbours to several established businesses including Dumpling Drop, Habit Coffee, Momi Noodle, and Varsha Indian Kitchen. Tenants will benefit from ample foot and vehicle traffic, plus, flexible OTD-1 zoning allows for an array of business uses.

Details

556B Pandora Avenue, Victoria BC

Size 2,061 SF

Gross Rent \$3,500 per month

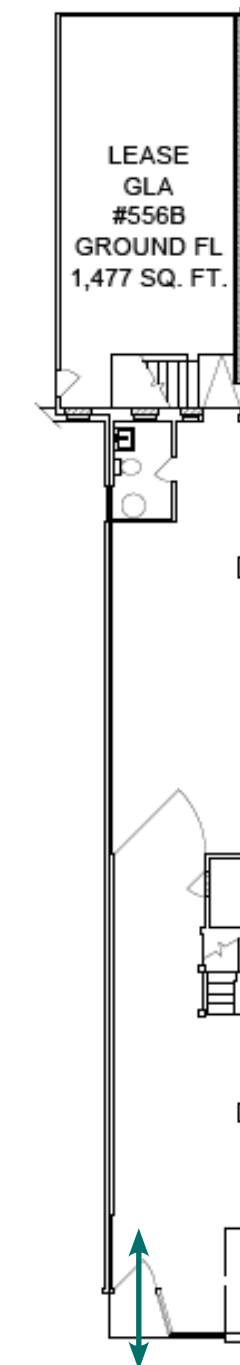
Zoning OTD-1: Old Town District

Highlights

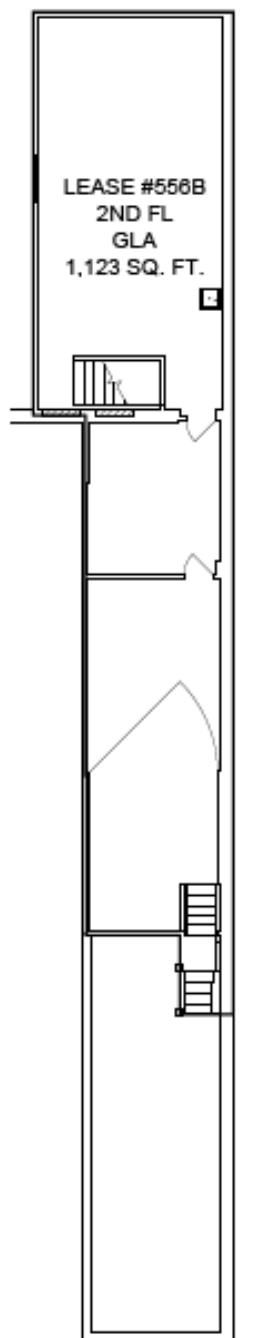
- High foot and vehicle traffic year round
- Steps away from Fan Tan Alley & Chinatown
- Located along public transit and bike routes

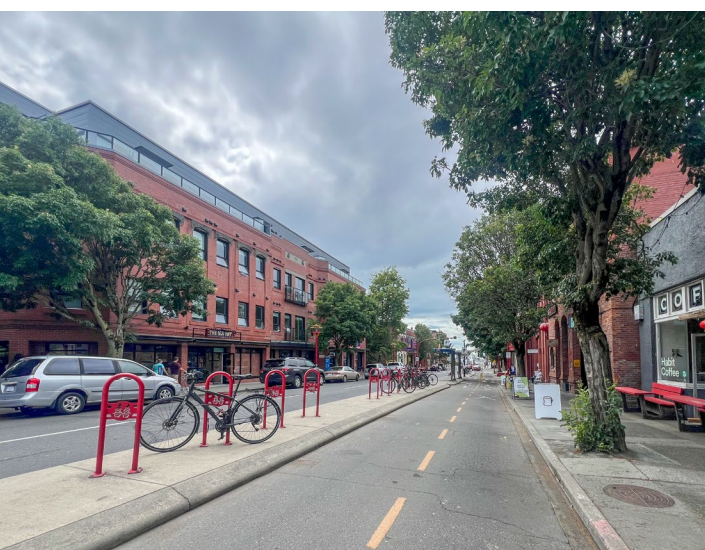
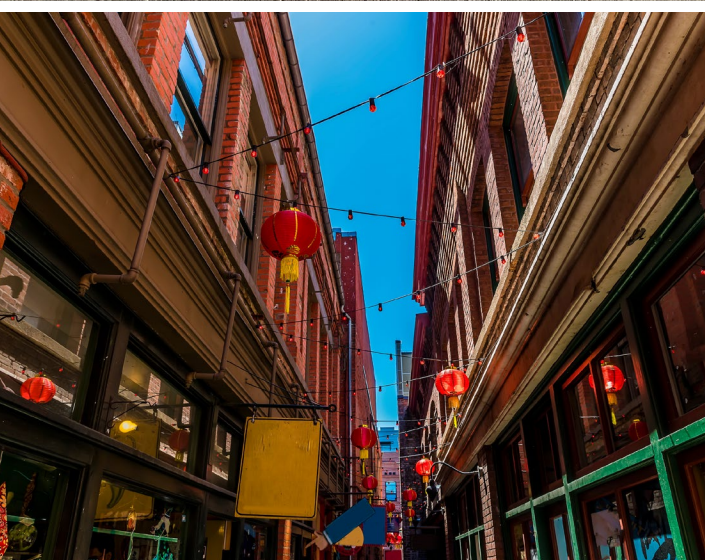


Ground Floor



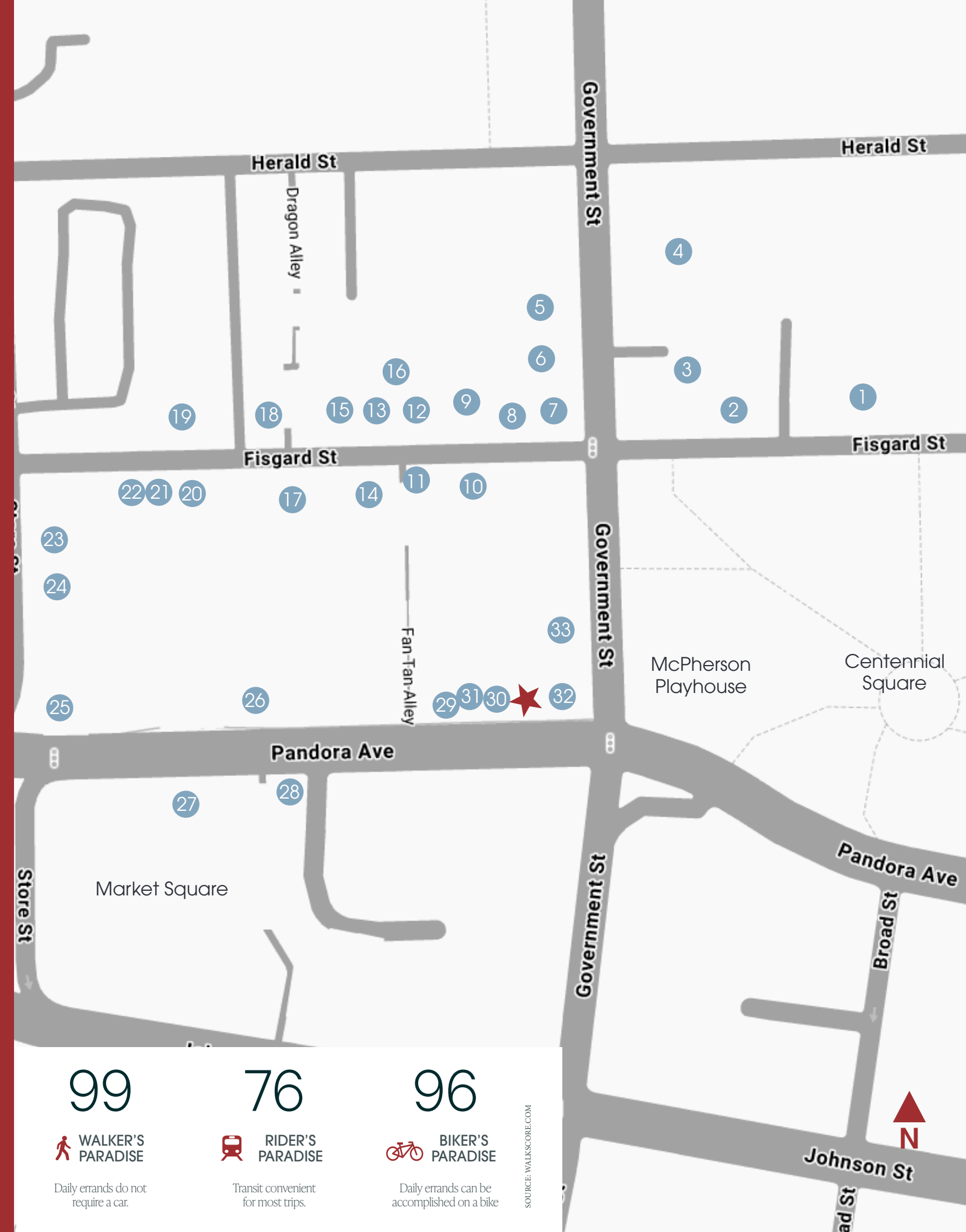
2nd Floor





Old Town District

1. YuaBistro
2. Indian Aroma Restaurant
3. QV Cafe & Bakery
4. Brasserie L'Ecole
5. Victoria BBQ House & Bakery
6. Shizen Japanese Restaurant
7. Ocean Garden Restaurant
8. I Kyu Noodles
9. Wah Lai Yuen Bakery + Restaurant
10. Matadora Tapas
11. Fan Tan Cafe
12. Little Yunnan Restaurant
13. Kwong Tung Seafood Restaurant
14. Ugly Duckling Dining & Provisions
15. Don Mee
16. MAiiz Nixtamal Eatery & Tortilleria
17. Bean Around The World
18. The Bubble Tea Place
19. Pinhalla Pinball Pizzeria
20. La Roux Patisserie
21. Ohana Sushi
22. Eva Schnitzelhaus
23. Sour Pickle Cafe
24. Chubby Dumpling
25. Swans Pub
26. Virtuous Pie
27. The Drake Eatery
28. Shanzee's Old Town
29. Habit Coffee
30. Dumpling Drop
31. Momi Noodle
32. Varsha Indian Kitchen
33. Freshslice Pizza



Join the Vibrant Lower Pandora Avenue

556B Pandora Avenue | Retail Opportunity

FOR LEASE



Contact Us

Mitch Bryan
Associate
mitch.bryan@cbre.com
250 385 1225

CBRE Limited | www.cbrevictoria.com | 110-800 Yates Street, Victoria BC, V8W 1L8 | 250 386 0000

CBRE

This disclaimer shall apply to CBRE Limited, Real Estate Brokerage, and to all other divisions of the Corporation; to include all employees and independent contractors ("CBRE"). The information set out herein, including, without limitation, any projections, images, opinions, assumptions and estimates obtained from third parties (the "Information") has not been verified by CBRE, and CBRE does not represent, warrant or guarantee the accuracy, correctness and completeness of the Information. CBRE does not accept or assume any responsibility or liability, direct or consequential, for the Information or the recipient's reliance upon the Information. The recipient of the Information should take such steps as the recipient may deem necessary to verify the Information prior to placing any reliance upon the Information. The Information may change and any property described in the Information may be withdrawn from the market at any time without notice or obligation to the recipient from CBRE. CBRE and the CBRE logo are the service marks of CBRE Limited and/or its affiliated or related companies in other countries. All other marks displayed on this document are the property of their respective owners. All Rights Reserved.