

FOR LEASE

CBRE

1328

Government Street





1328

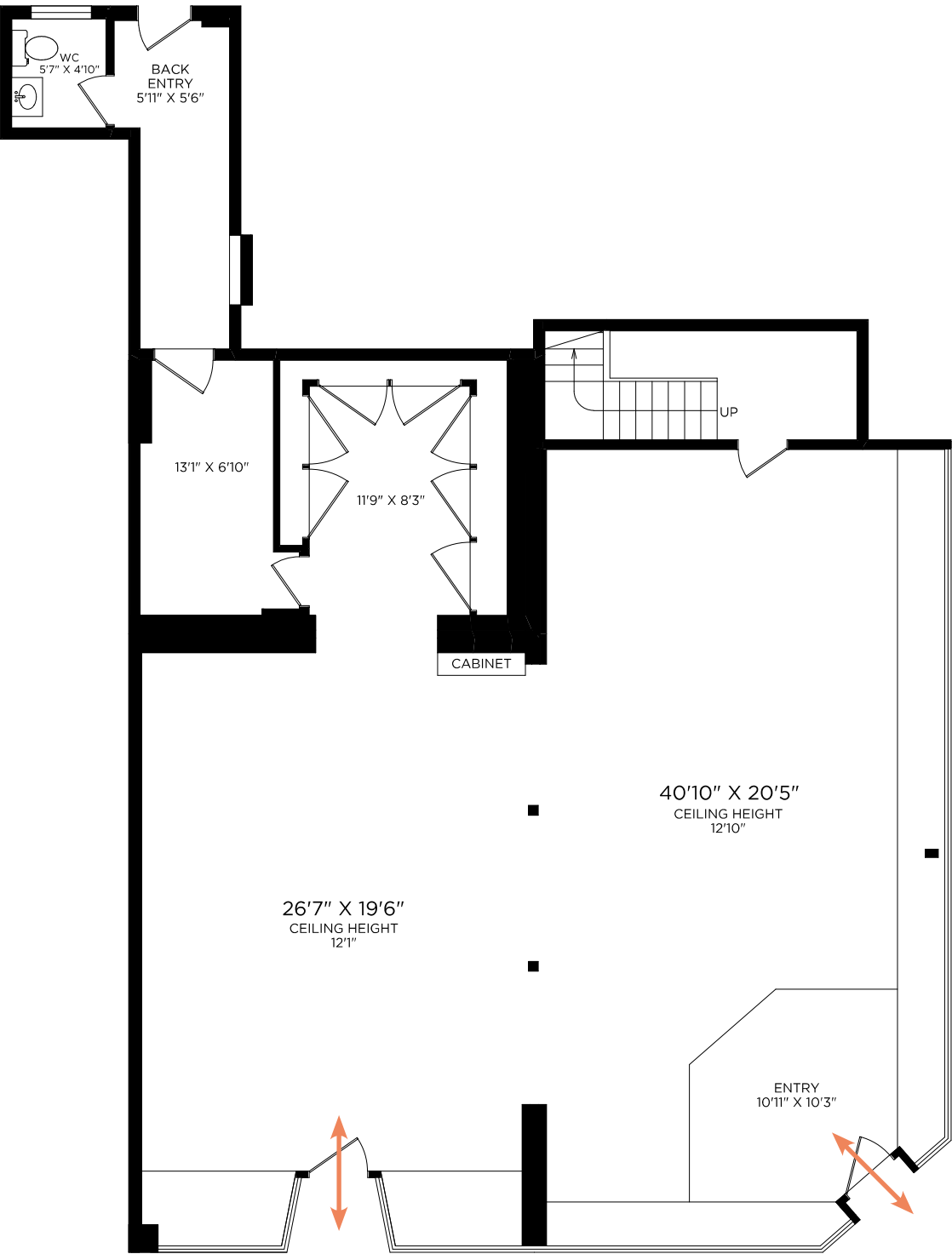
Government Street

CBRE Limited is pleased to present an exceptional opportunity to lease prime corner retail space located at 1328 Government Street, an iconic corner in the heart of downtown Victoria’s shopping hub. This premier location is easily accessible for both locals and tourists. The 2,067 square foot unit features impressive large storefront windows, two entrances, an open-concept floor plan with storage, and one private washroom. The flexible OTD-1 zoning allows for a variety of business uses. This is the perfect opportunity to join notable and established retailers such as MEC, Still Life, Arc’teryx, Cherry Pick Vintage, Flux and Stone, and Complex Clothing.

Details

Address	1328 Government Street, Victoria BC
Size	2,067 SF
Lease Rate	Contact Listing Agents
Additional Rent	\$16.00 PSF (est.)
Zoning	OTD-1: Old Town District-1

FLOOR PLAN

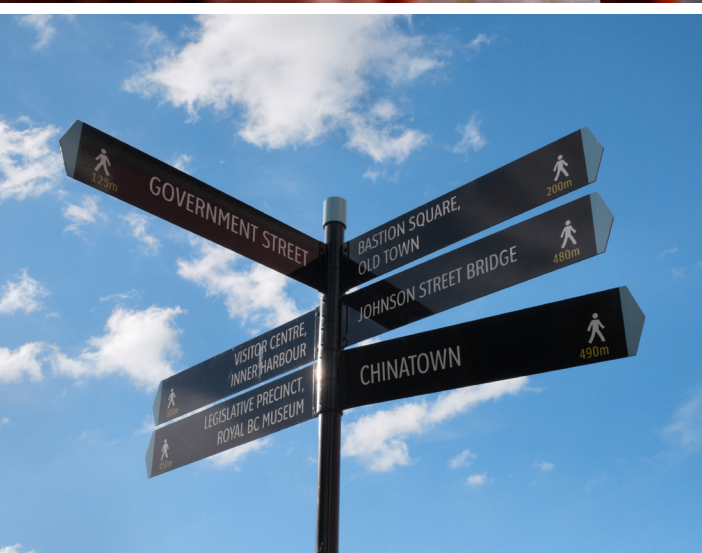


GOVERNMENT STREET

JOHNSON STREET

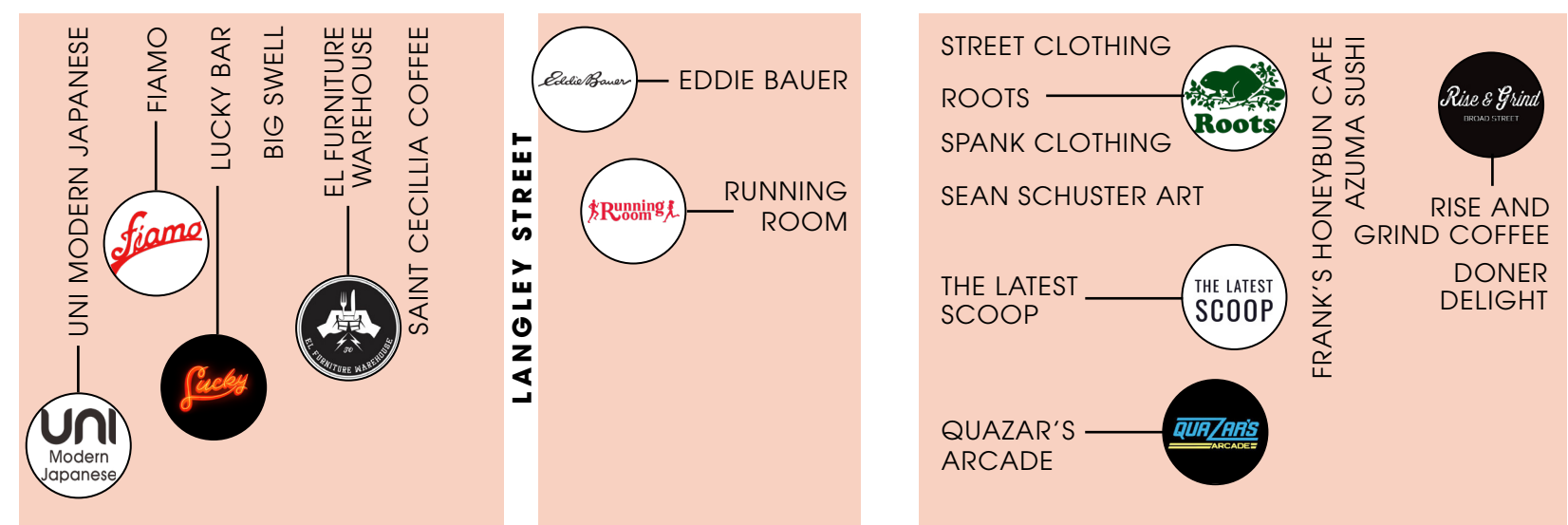
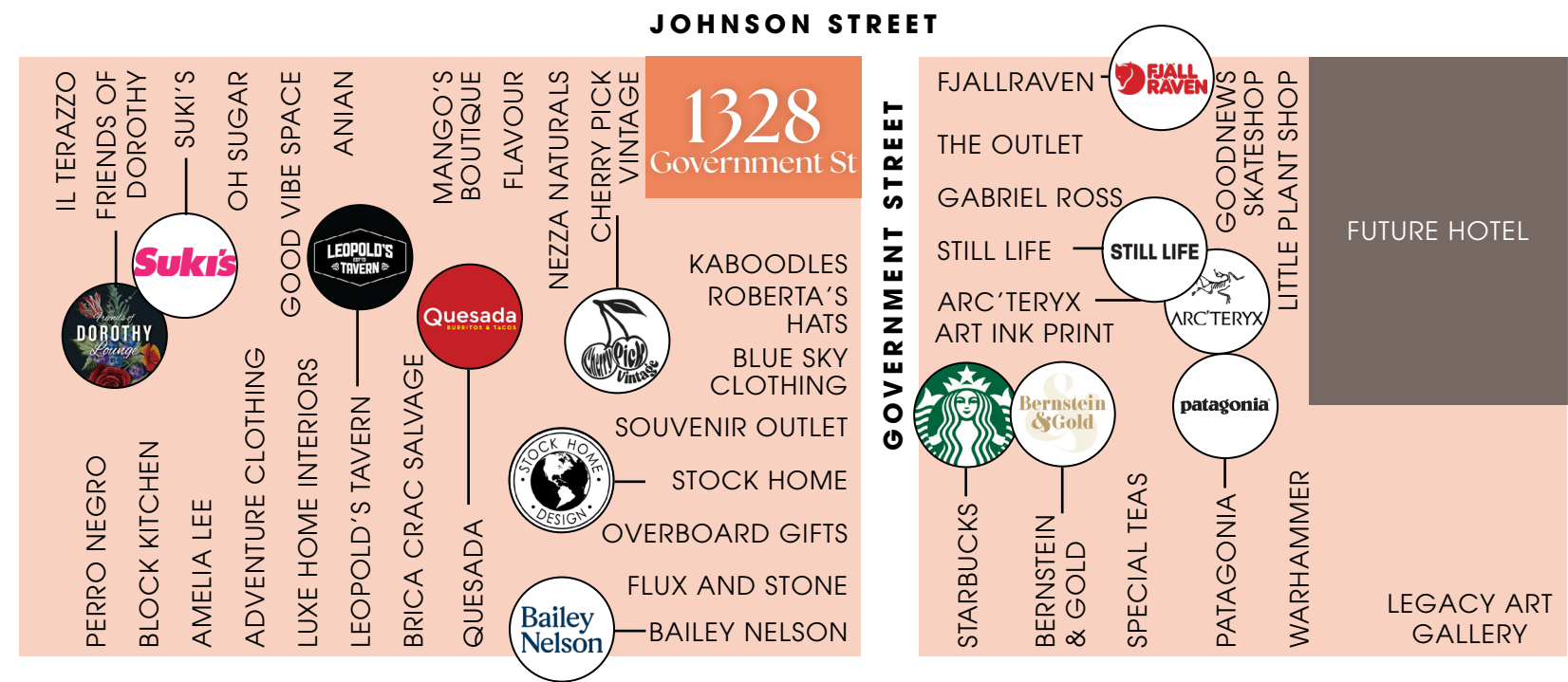
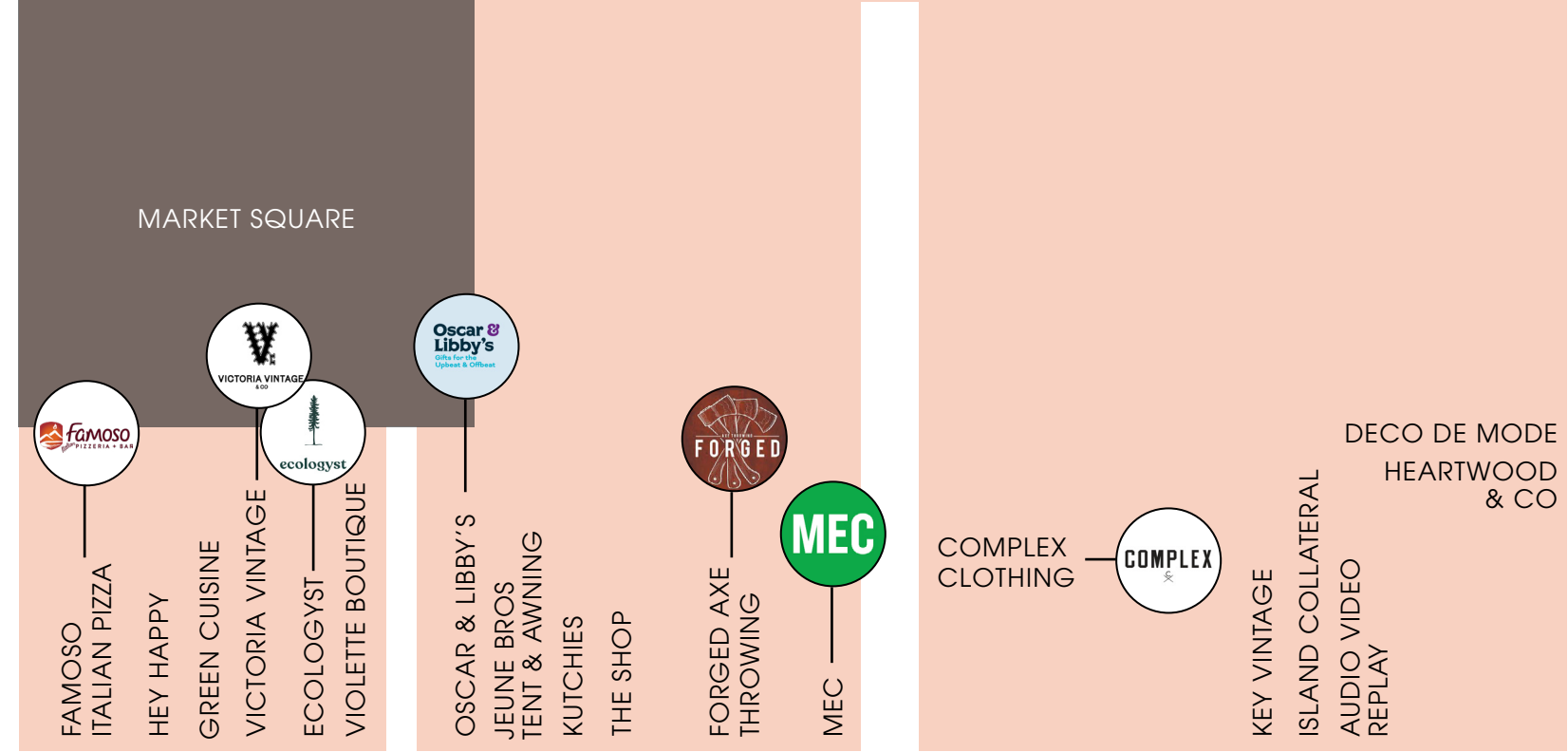
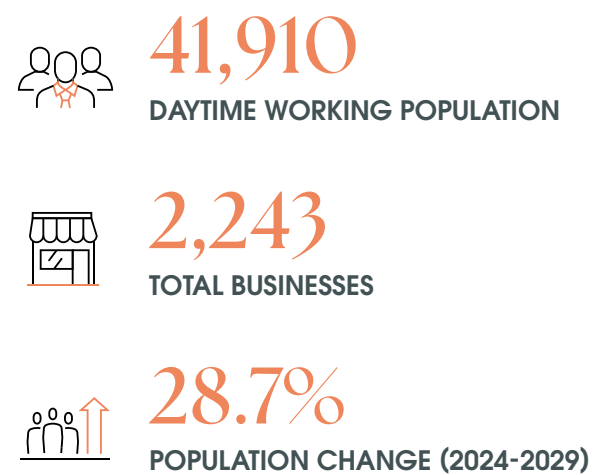


JOHNSON STREET



1328 Government Street is positioned in the bustling core of downtown Victoria, British Columbia, at the lively crossroads of Government Street and Lower Johnson Street. Renowned for its picturesque heritage buildings, this historic and walkable neighborhood serves as a central hub for locals and visitors alike.

1 KM Radius





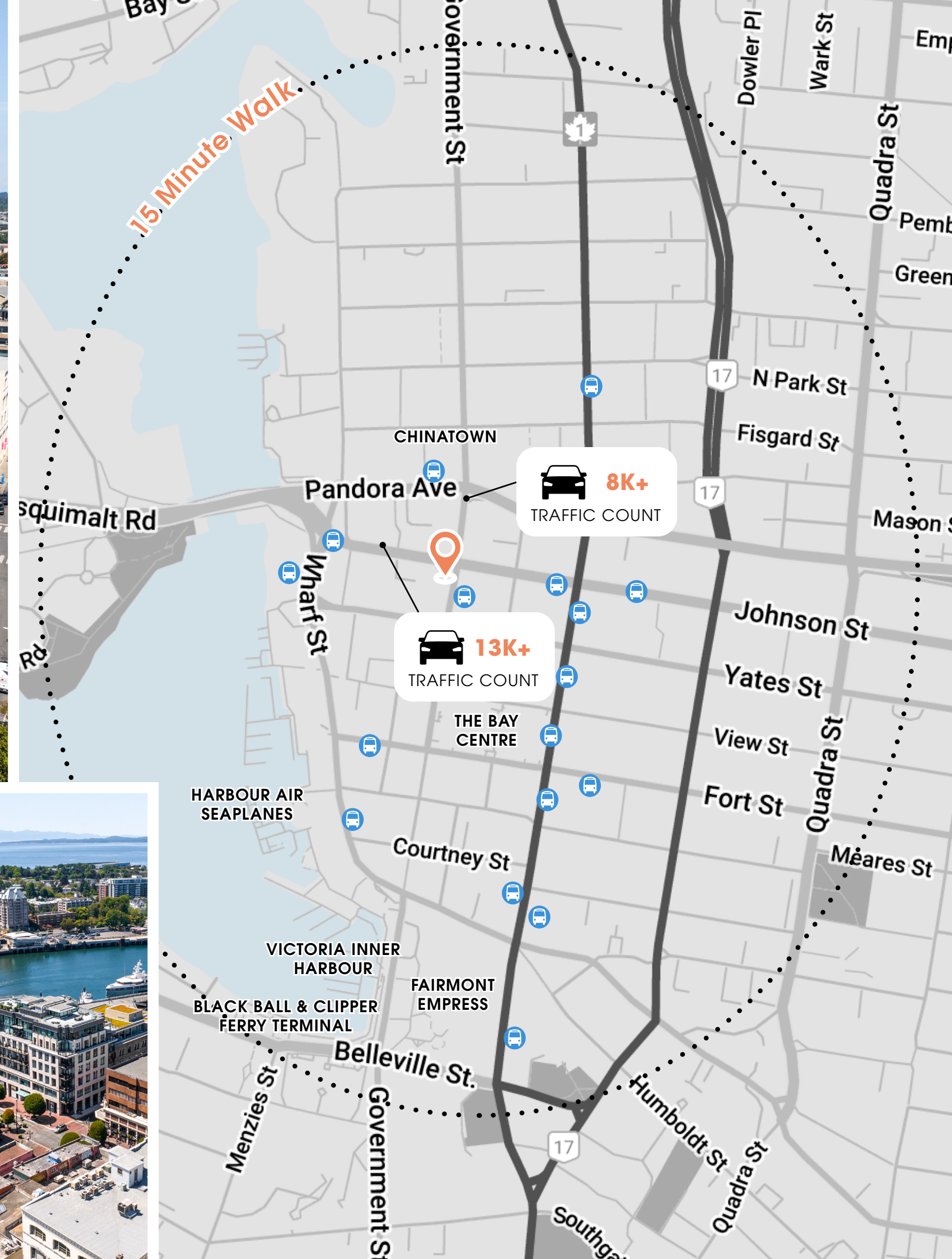
1KM Radius

39
CAFES

124
RESTAURANTS

18
GYMS/FITNESS

416
RETAILERS



1328

Government Street



Contact Us

Jeff Lougheed
Vice President
jeff.lougheed@cbre.com
250 386 0001

Mitch Bryan
Associate
mitch.bryan@cbre.com
250 385 1225

CBRE Limited | www.cbrevictoria.com | 110-800 Yates Street, Victoria BC, V8W 1L8 | 250 386 0000

CBRE

This disclaimer shall apply to CBRE Limited, Real Estate Brokerage, and to all other divisions of the Corporation, to include all employees and independent contractors ("CBRE"). The information set out herein, including, without limitation, any projections, images, opinions, assumptions and estimates obtained from third parties (the "Information") has not been verified by CBRE, and CBRE does not represent, warrant or guarantee the accuracy, correctness and completeness of the Information. CBRE does not accept or assume any responsibility or liability, direct or consequential, for the Information or the recipient's reliance upon the Information. The recipient of the Information should take such steps as the recipient may deem necessary to verify the Information prior to placing any reliance upon the Information. The Information may change and any property described in the Information may be withdrawn from the market at any time without notice or obligation to the recipient from CBRE. CBRE and the CBRE logo are the service marks of CBRE Limited and/or its affiliated or related companies in other countries. All other marks displayed on this document are the property of their respective owners. All Rights Reserved.