

FOR SALE

HIGH EXPOSURE RETAIL INVESTMENT OPPORTUNITY

IN THE MIXED-USE
BLACK & WHITE
DEVELOPMENT

BW

BLACK AND WHITE

ON UPPER FORT



THE OFFERING

CBRE Victoria's Investment Properties Group is pleased to present for sale, 6 contiguous retail strata units in the renowned Black & White development. Located at the bustling corner of Cook and Fort Street in Victoria, BC, this retail portfolio offers a rare opportunity to purchase over 8,000 SF of high-exposure retail on the edge of Harris Green. Built in 2019, Black & White is a mixed-use development which features 75 residential suites in addition to the 6 commercial units. Investors will benefit from the strong tenant mix, high-exposure location and significant passive investment income in a neighbourhood in the midst of rapid revitalization and densification.

HIGHLIGHTS

- + 6 contiguous commercial strata units
- + 8,800+ SF of floor area
- + Extremely high exposure corner
- + Excellent year-round traffic
- + High quality new construction
- + 225+ feet of retail frontage on Fort & Cook St
- + 9 reserved underground parking stalls
- + Grade-level loading on Meares St
- + Located directly on transit & bike lanes
- + Significant residential density in development in direct proximity

DETAILS

Civic Addresses

1025 Cook St / 1101-1107 Fort St

Legal Addresses

CA-72 Fort Street Commercial

Units

6 Commercial Retail Units

Floor Area

Units: 8,114 SF

Common Area: 709 SF

Total: 8,823 SF

Year Built

2019

Zoning

CA-72 Fort St Commercial Zone

Assessed Value

\$5,479,000 (2025 Total)

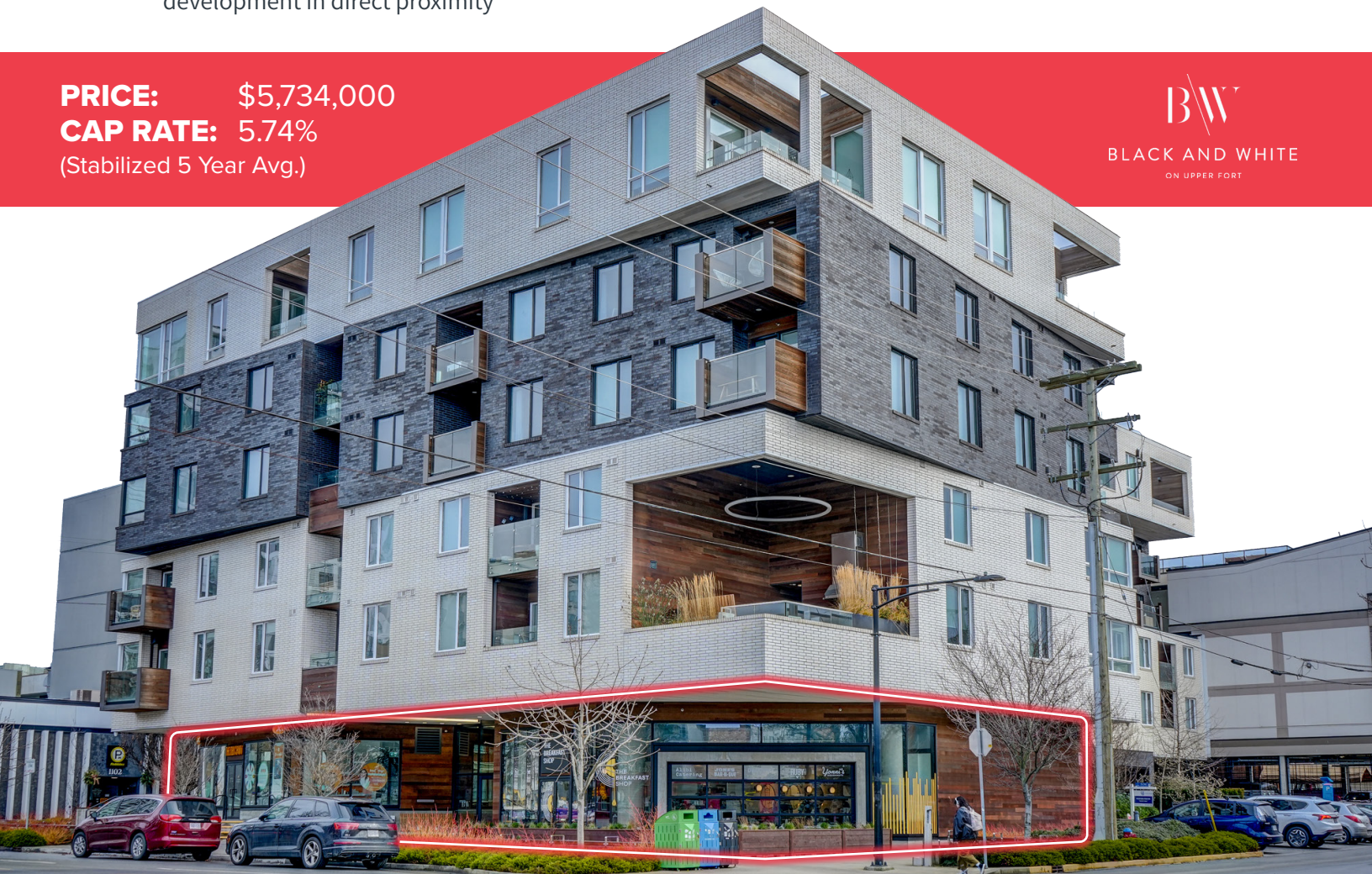
PRICE: \$5,734,000

CAP RATE: 5.74%

(Stabilized 5 Year Avg.)

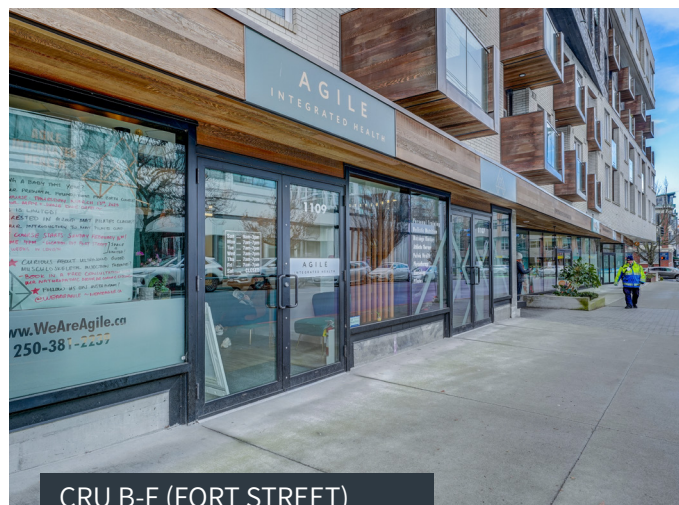
BW

BLACK AND WHITE
ON UPPER FORT





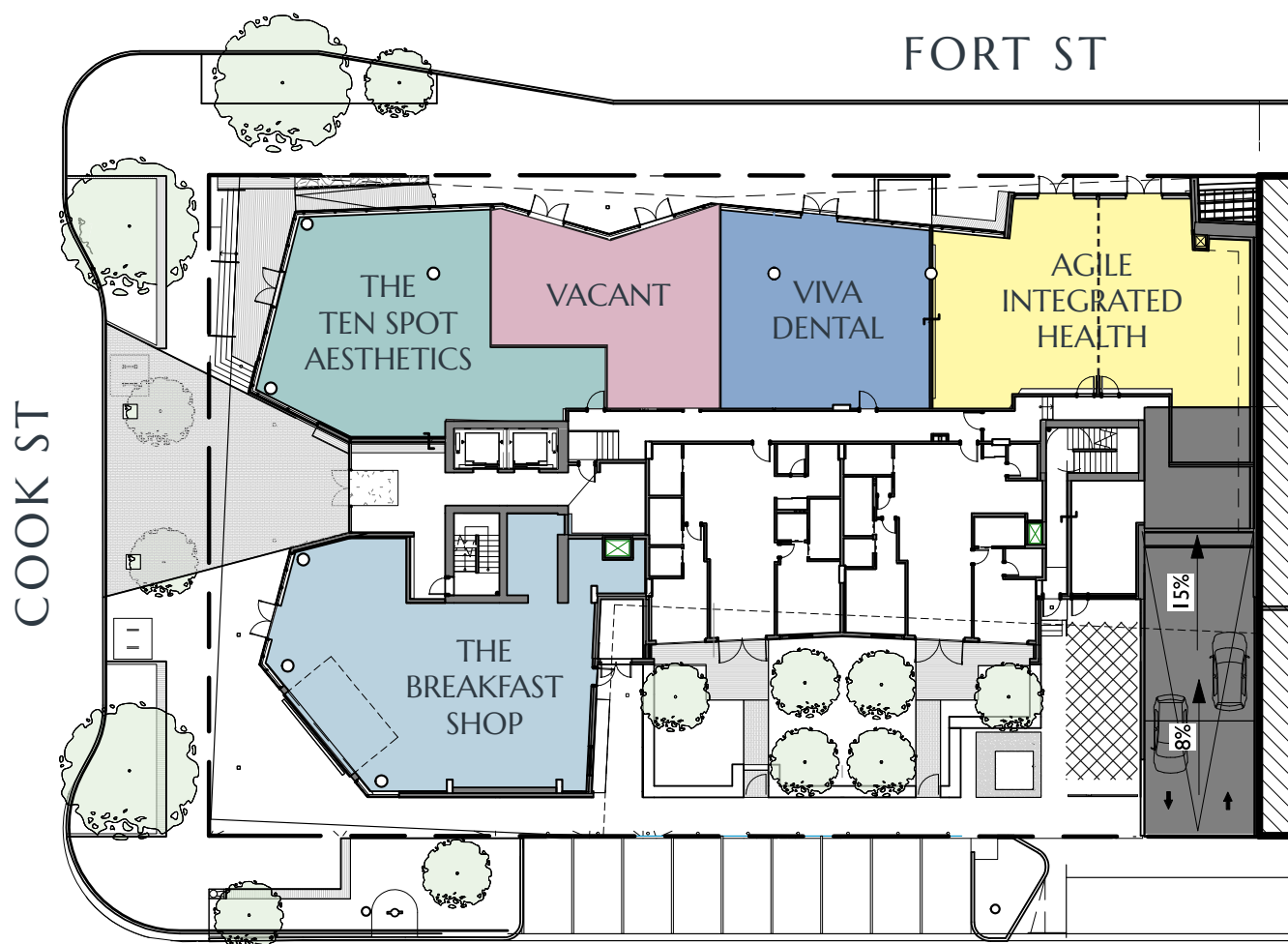
CRU A (COOK STREET)



CRU B-F (FORT STREET)

LEASE SUMMARY

	CRU A	CRU B	CRU C	CRU D	CRU E/F
Civic Address	1025 Cook St	1101 Fort St	1103 Fort St	1105 Fort St	1105/1107 Fort St
Strata Lot #	SL7	SL1	SL83	SL4	SL5/SL6
Tenant	The Breakfast Shop	The Ten Spot	Vacant	Viva Dental	Agile Integrated Health
Total Area	2,385 SF	1,764 SF	1,144 SF	1,289 SF	2,066 SF
Term Length	120 Months	120 Months	Vacant	120 Months	60 Months
Term Expiry	2034-11-14	2031-03-31	Vacant	2030-04-30	2026-12-31



FOR SALE

HIGH EXPOSURE RETAIL INVESTMENT OPPORTUNITY



PRICE: \$5,734,000
CAP RATE: 5.74%

EXCLUSIVE ADVISORS:

Chris Rust

Personal Real Estate Corporation
Senior Vice President
Investment Properties Group Victoria
250 386 0005
chris.rust@cbre.com

Ross Marshall

Personal Real Estate Corporation
Senior Vice President
Investment Properties Group Victoria
250 386 0004
ross.marshall@cbre.com



BLACK AND WHITE
ON UPPER FORT

CBRE

www.cbre.ca
www.cbrevictoria.com

CBRE Limited | 110-800 Yates Street, Victoria, BC V8W 1L8 | 250 386 0000

This disclaimer shall apply to CBRE Limited, Real Estate Brokerage, and to all other divisions of the Corporation; to include all employees and independent contractors ("CBRE"). The information set out herein, including, without limitation, any projections, images, opinions, assumptions and estimates obtained from third parties (the "Information") has not been verified by CBRE, and CBRE does not represent, warrant or guarantee the accuracy, correctness and completeness of the Information. CBRE does not accept or assume any responsibility or liability, direct or consequential, for the Information or the recipient's reliance upon the Information. The recipient of the Information should take such steps as the recipient may deem necessary to verify the Information prior to placing any reliance upon the Information. The Information may change and any property described in the Information may be withdrawn from the market at any time without notice or obligation to the recipient from CBRE. CBRE and the CBRE logo are the service marks of CBRE Limited and/or its affiliated or related companies in other countries. All other marks displayed on this document are the property of their respective owners. All Rights Reserved. Mapping Sources: Canadian Mapping Services canadamapping@cbre.com; DMTI Spatial, Envrionics Analytics, Microsoft Bing, Google Earth.