



# 705

JOHNSON STREET

Open Concept Retail Space in Downtown Victoria



705 Johnson Street  
Victoria, BC

# Join Historic Johnson Street



## Retail Space | For Lease

CBRE Victoria is pleased to present the opportunity to lease a prime downtown retail space located at 705 Johnson Street in a bustling area of Victoria. This unit features 2,434 square feet of open-concept space, including a small commercial kitchen, 16’ ceiling heights, two private washrooms, two private rooms, and storage space. It boasts excellent frontage with large storefront windows and signage opportunities. Accessing 705 Johnson Street is convenient, with a transit stop right outside, the Johnson Street parkade across the street, and well-established bicycle lanes. With flexible central district zoning, this unit can accommodate a variety of business uses.

### Property Details



**AVAILABLE AREA**  
2,434 SF



**ASKING NET RENT**  
Contact Listing Agent



**ADDITIONAL RENT**  
\$12.50 PSF



**AVAILABILITY**  
April 2026



**ZONING**  
CBD-1: Central Business District-1



**PARKING**  
Johnson St Parkade

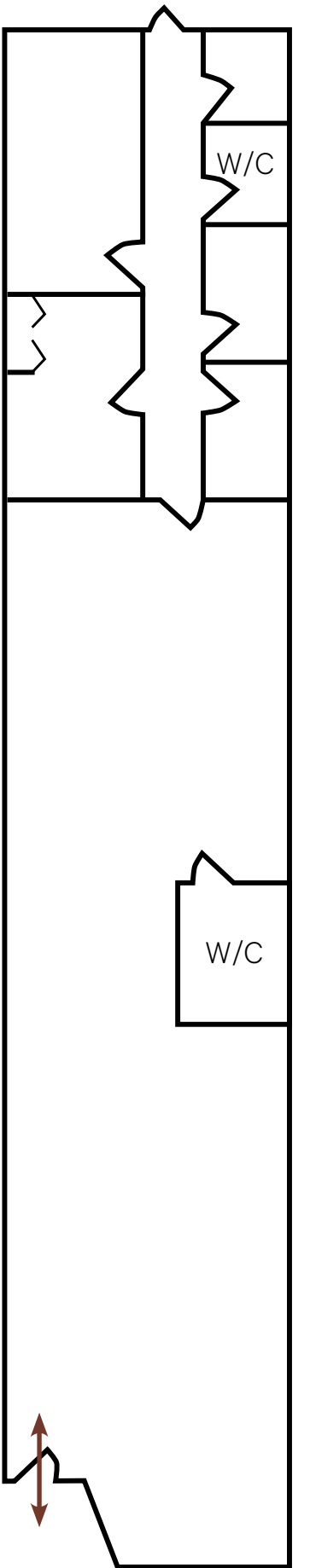
### SPACE FEATURES

- + 16’ ceiling heights
- + Prominent signage opportunities & exposure along Johnson St

### PERMITTED USES

- ✓ Brew pub
- ✓ Drinking establishment
- ✓ Equipment rental
- ✓ Financial service
- ✓ Food & beverage service
- ✓ Hotel
- ✓ Office
- ✓ Personal service
- ✓ Retail liquor sale
- ✓ Retail trade
- ✓ Utility





JOHNSON STREET



# Location



705 Johnson Street

## Restaurants & Bars

- 1 Tacofino
- 2 Nubo Japanese Tapas
- 3 Green Leaf Bistro
- 4 YuaBistro
- 5 The Palms Restaurant & Lounge
- 6 The Mint
- 7 Ruby on Johnson
- 8 Sizzling Tandoor
- 9 Block Kitchen + Bar
- 10 Il Terrazzo
- 11 Earls Kitchen + Bar
- 12 Cactus Club Cafe
- 13 Marilena Cafe & Raw Bar

## Retail & Services

- 1 London Drugs
- 2 Market on Yates
- 3 Liquor Express on Yates
- 4 Shoppers Drug Mart
- 5 The Bay Centre
- 6 Vintage Spirits Liquor Store
- 7 Victoria City Hall
- 8 Liquor Plus Administration
- 9 Blush Bridal Boutique
- 10 Oxygen Yoga & Fitness
- 11 Cineplex Odeon
- 12 Bulk Barn
- 13 Willowbrae Childcare Academy

## Cafes

- 1 Tim Hortons
- 2 Macchiato Caffè
- 3 Habit Coffee
- 4 Starbucks
- 5 Bubby Rose's Downtown
- 6 Hey Happy
- 7 Habit Coffee

## New & Future Developments



99



WALKER'S PARADISE

Daily errands do not require a car.

93



RIDER'S PARADISE

Transit convenient for most trips.

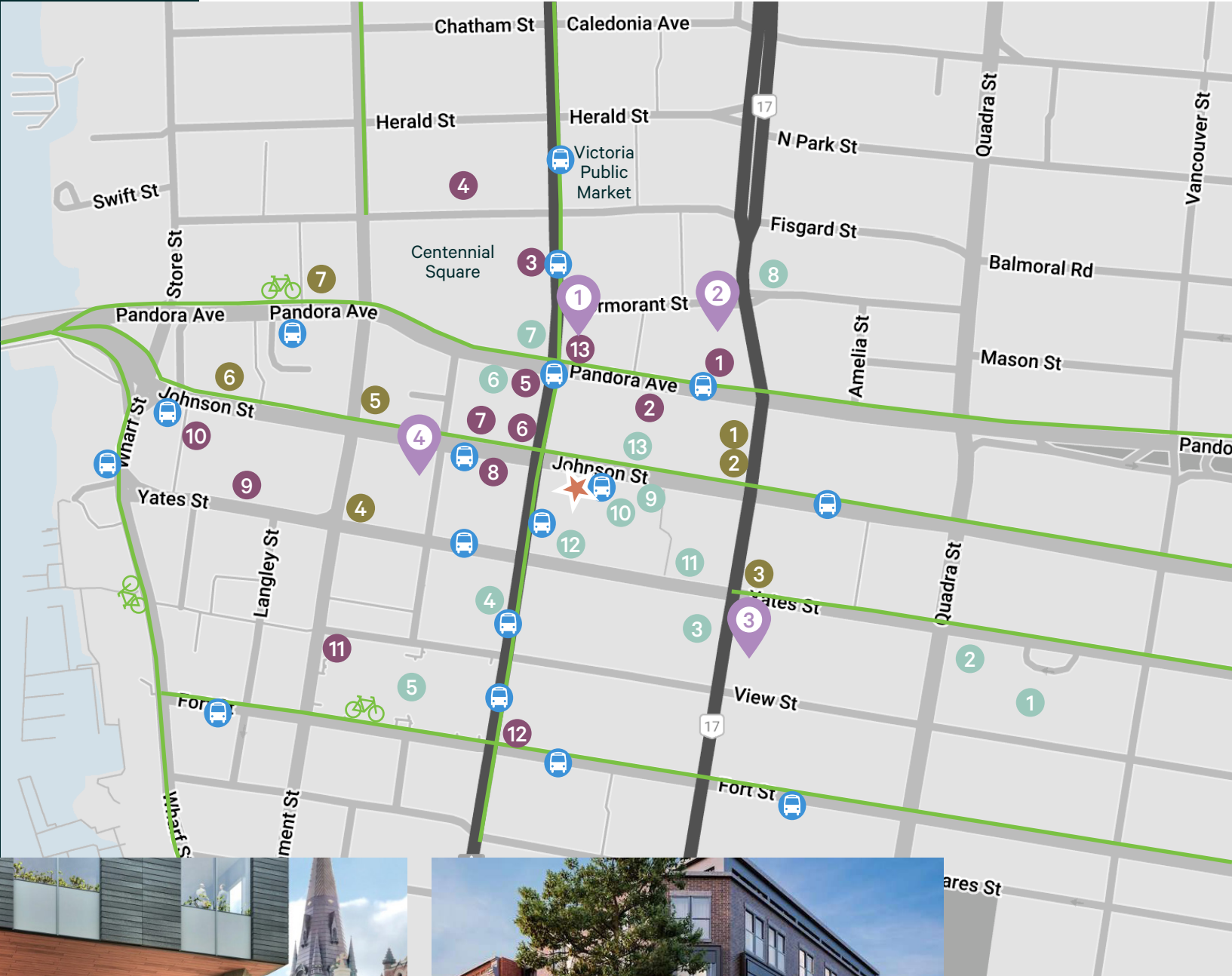
99



BIKER'S PARADISE

Daily errands can be accomplished on a bike.

SOURCE: WALKSCORE.COM





# 705

JOHNSON STREET

## CONTACT US

Jeff Lougheed  
Vice President  
jeff.lougheed@cbre.com  
250 386 0001

Mitch Bryan  
Associate  
mitch.bryan@cbre.com  
250 385 1225

# CBRE

CBRE Limited | [www.cbrevictoria.com](http://www.cbrevictoria.com) | 110-800 Yates Street, Victoria BC, V8W 1L8 | 250 386 0000

This disclaimer shall apply to CBRE Limited, Real Estate Brokerage, and to all other divisions of the Corporation; to include all employees and independent contractors ("CBRE"). The information set out herein, including, without limitation, any projections, images, opinions, assumptions and estimates obtained from third parties (the "Information") has not been verified by CBRE, and CBRE does not represent, warrant or guarantee the accuracy, correctness and completeness of the Information. CBRE does not accept or assume any responsibility or liability, direct or consequential, for the Information or the recipient's reliance upon the Information. The recipient of the Information should take such steps as the recipient may deem necessary to verify the Information prior to placing any reliance upon the Information. The Information may change and any property described in the Information may be withdrawn from the market at any time without notice or obligation to the recipient from CBRE. CBRE and the CBRE logo are the service marks of CBRE Limited and/or its affiliated or related companies in other countries. All other marks displayed on this document are the property of their respective owners. All Rights Reserved.

