

FOR SUBLEASE

Langford Plaza

UNIT 117 - 777 GOLDSTREAM AVENUE



Retail/Office Opportunity in Langford

- + Ample on-site surface parking
- + Restaurant anchored plaza with diverse tenant mix
- + Easily accessible via walk, bike, & transit

CBRE

Opportunity

CBRE Limited is pleased to present a ground floor retail/office space for sublease at Langford Plaza. Unit 117, located at 777 Goldstream Avenue, features 1,953 square feet of open area space with two private areas, two private washrooms, and a kitchenette. The benefits of Langford Plaza include ample on-site surface parking, a diverse tenant mix, and a restaurant anchor. The unit is abundant with natural light from its large storefront windows and offers opportunities for high-visibility signage. Langford Plaza is easily accessible via all modes of transportation and is zoned C3-District Commercial, allowing for a variety of business uses.



Property Details



AVAILABLE AREA
1,953 SF



AVAILABILITY
Immediately



ASKING NET RENT
Contact Listing Agents



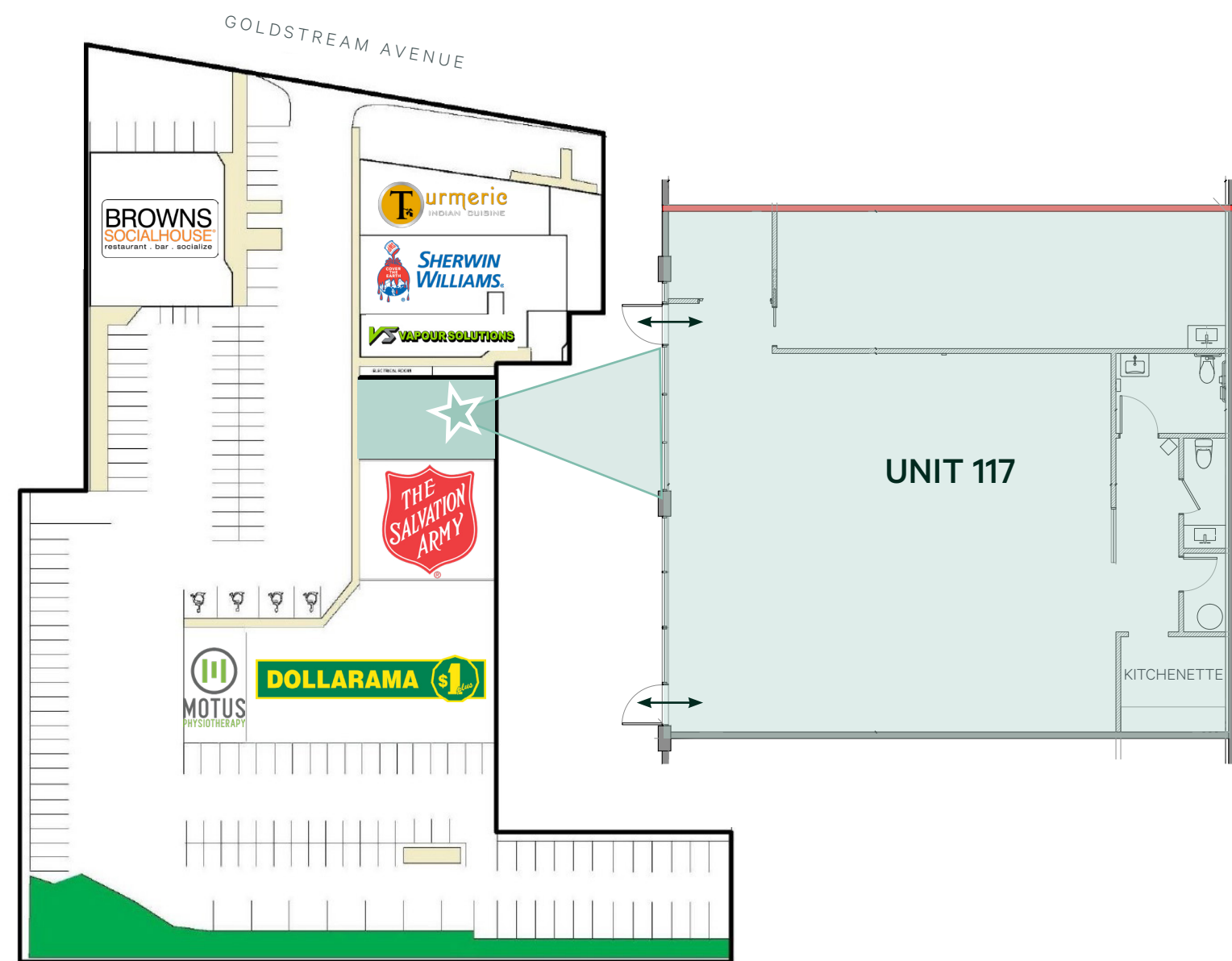
ZONING
C3-District Commercial



ADDITIONAL RENT
\$18.13 PSF



PARKING
Ample On-Site Surface Parking



Location

★ Subject
Unit 117 - 777 Goldstream Avenue, Langford, BC

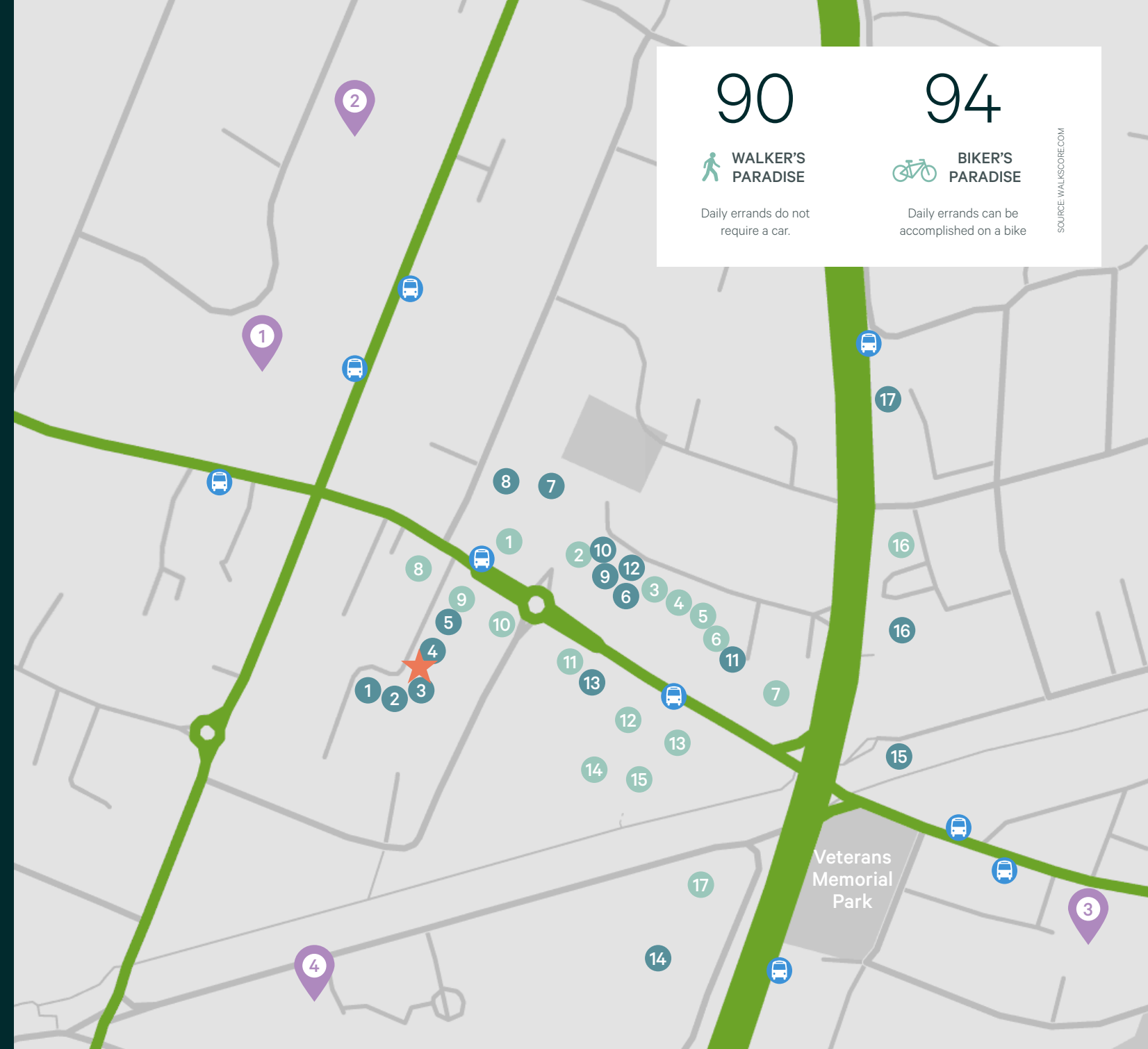
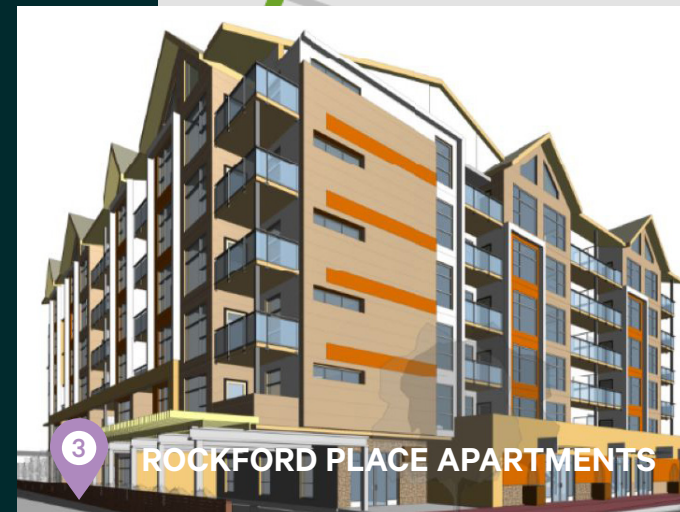
Cafes + Restaurants

- | | | |
|---------------------------------|---------------------------------|-------------------------|
| 1. Starbucks | 7. Bin 4 Burger Lounge | 13. Jones Bar B Que |
| 2. Sushi Ya | 8. Browns Socialhouse | 14. Pizza Hut |
| 3. Fu Wah Express Chinese Foods | 9. Turmeric Indian Cuisine | 15. Parachute Ice Cream |
| 4. Subway | 10. The Fountain Diner | 16. Boston Pizza |
| 5. Lighthouse Cake | 11. Poncho's Cafe & Catering | 17. Floyd's Diner |
| 6. Salty's Fish and Chips | 12. Three Gringos Mexican Grill | |

Shopping + Services

- | | | |
|---------------------------------|-------------------------|---------------------------|
| 1. Motus Physiotherapy | 7. Fairway Market | 13. Frontrunners Footwear |
| 2. Dollarama | 8. Blackapple | 14. Everything Games |
| 3. Salvation Army Thrift Store | 9. Connect Hearing | 15. Goldstream Bicycles |
| 4. Vapour Solutions | 10. Gizmo's Computers | 16. Clarity Cannabis |
| 5. Sherwin-Williams Paint Store | 11. Westshore Jewelry | 17. Kharma Salons |
| 6. SPINCO Westshore | 12. Diamond Nails & Spa | |

Future Developments



JOIN THE HEART OF LANGFORD

CBRE

Langford Plaza

UNIT 117 - 777 GOLDSTREAM AVENUE



CONTACT US

Mitch Bryan

Associate
Advisory & Transaction Services
mitch.bryan@cbre.com
250 385 1225

Jeff Lougheed

Vice President
Advisory & Transaction Services
jeff.lougheed@cbre.com
250 386 0001

CBRE

CBRE Limited | www.cbrevictoria.com | 110-800 Yates Street, Victoria, BC, V8W 1L8 | 250 386 0000

This disclaimer shall apply to CBRE Limited, Real Estate Brokerage, and to all other divisions of the Corporation; to include all employees and independent contractors ("CBRE"). The information set out herein, including, without limitation, any projections, images, opinions, assumptions and estimates obtained from third parties (the "Information") has not been verified by CBRE, and CBRE does not represent, warrant or guarantee the accuracy, correctness and completeness of the Information. CBRE does not accept or assume any responsibility or liability, direct or consequential, for the Information or the recipient's reliance upon the Information. The recipient of the Information should take such steps as the recipient may deem necessary to verify the Information prior to placing any reliance upon the Information. The Information may change and any property described in the Information may be withdrawn from the market at any time without notice or obligation to the recipient from CBRE. CBRE and the CBRE logo are the service marks of CBRE Limited and/or its affiliated or related companies in other countries. All other marks displayed on this document are the property of their respective owners. All Rights Reserved. Mapping Sources: Canadian Mapping Services canadamapping.com; cbre.com; DMTI Spatial, Environics Analytics, Microsoft Bing, Google Earth.