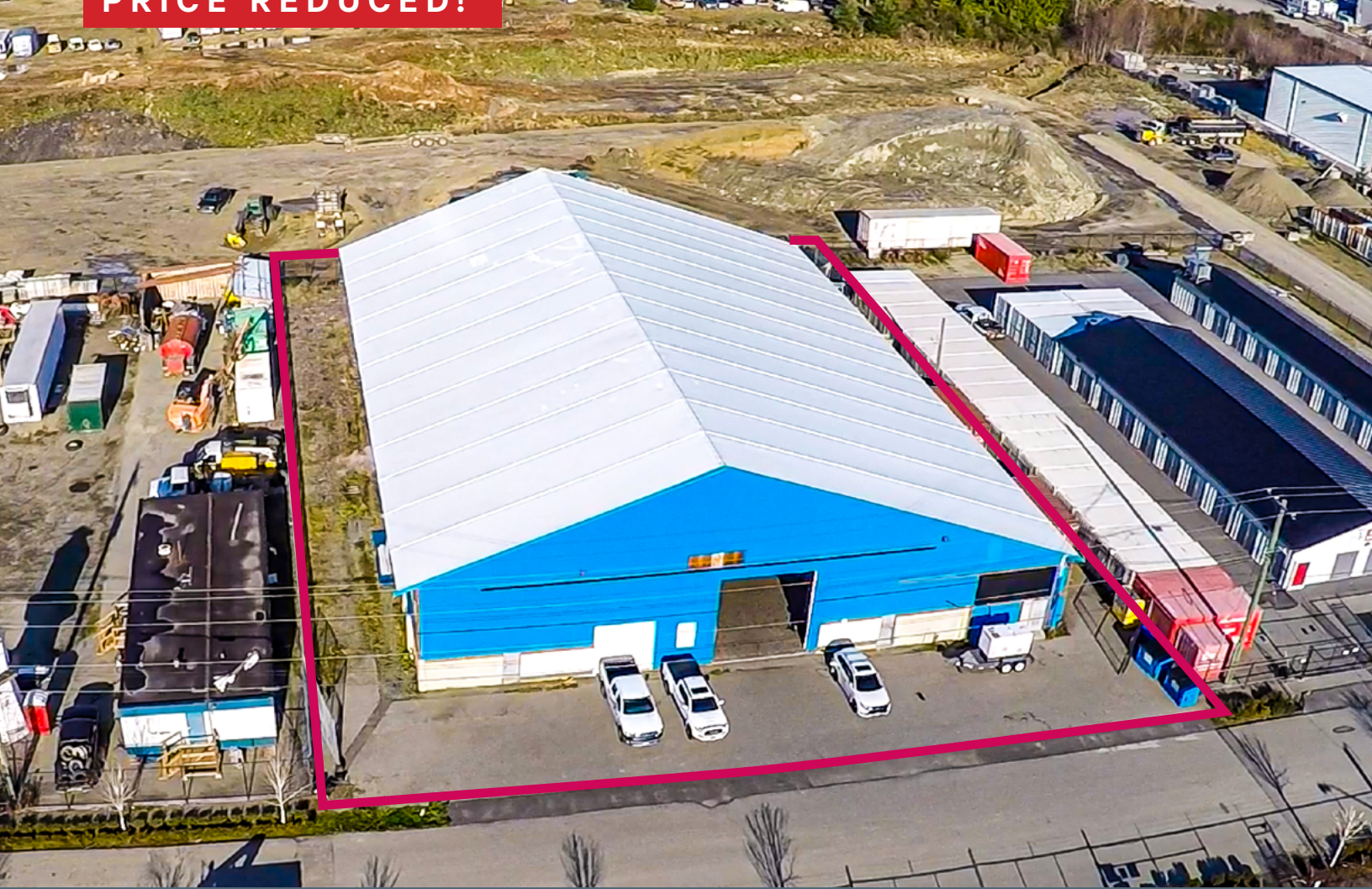


For Sale or Lease

22,255 SF INDUSTRIAL BUILDING
OWNER-OCCUPIER OPPORTUNITY

7450 Butler Road
Sooke Industrial Park

PRICE REDUCED!



- ▶ 22,255 SF warehouse on 33,105 SF of land
- ▶ 21' - 40' ceiling heights
- ▶ 17'W x 18'H grade level door
- ▶ 400 amp, 3 phase power
- ▶ Offices, staff lunch & locker rooms
- ▶ Site specific M-SBP zoning allows for a wide range of industrial uses
- ▶ Located minutes from Downtown Sooke and 30 minutes from Langford

THE OFFERING

The Investment Properties Group is pleased to present the opportunity to purchase or lease an industrial building in the Sooke Industrial Park. The property has excellent general industrial zoning which allows for a wide range of uses. Excellent vehicular access to Highway 14 allows for convenient servicing of Langford, up-island, and the surrounding Westshore municipalities.

PROPERTY DETAILS

Civic Address	62 - 7450 Butler Road, Sooke, BC
PID	028-646-665
Legal Address	Strata Lot 26 Section 16 Otter Pt District Strata Plan VIS7096
Land Size	33,105 SF / 0.76 Acres
Building Size	Upper: 3,285 SF Main: 18,970 SF <hr/> Total: 22,255 SF
Construction	Steel with Fabric Roof
Power	400 Amp, 3 Phase
Loading	17'W x 18'H Grade Level Door
Property Taxes	\$26,438 (2023)
Strata Fees	\$167 / Month
Availability	Immediately
LEASE RATE	\$11.00 PSF
ADDITIONAL RENT	\$3.23 PSF (Main Floor Only)
PRICE	\$2,550,000 \$1,995,000
PRICE/SF	\$90 PSF

ZONING

M-SBP Sooke Business Park Industrial Zone

Uses permitted but not limited to:

- General Industrial Uses
- Business office and support services
- Athletic facilities
- Drive-in theatres
- Vehicle sales/rentals
- Auction rooms and places
- Unenclosed storage
- Retail sales of building and landscape supplies
- Retail sales accessory to a principal industrial use
- One dwelling unit for the use of a caretaker accessory to principal use
- Intensive agriculture -
Medical Marijuana Production

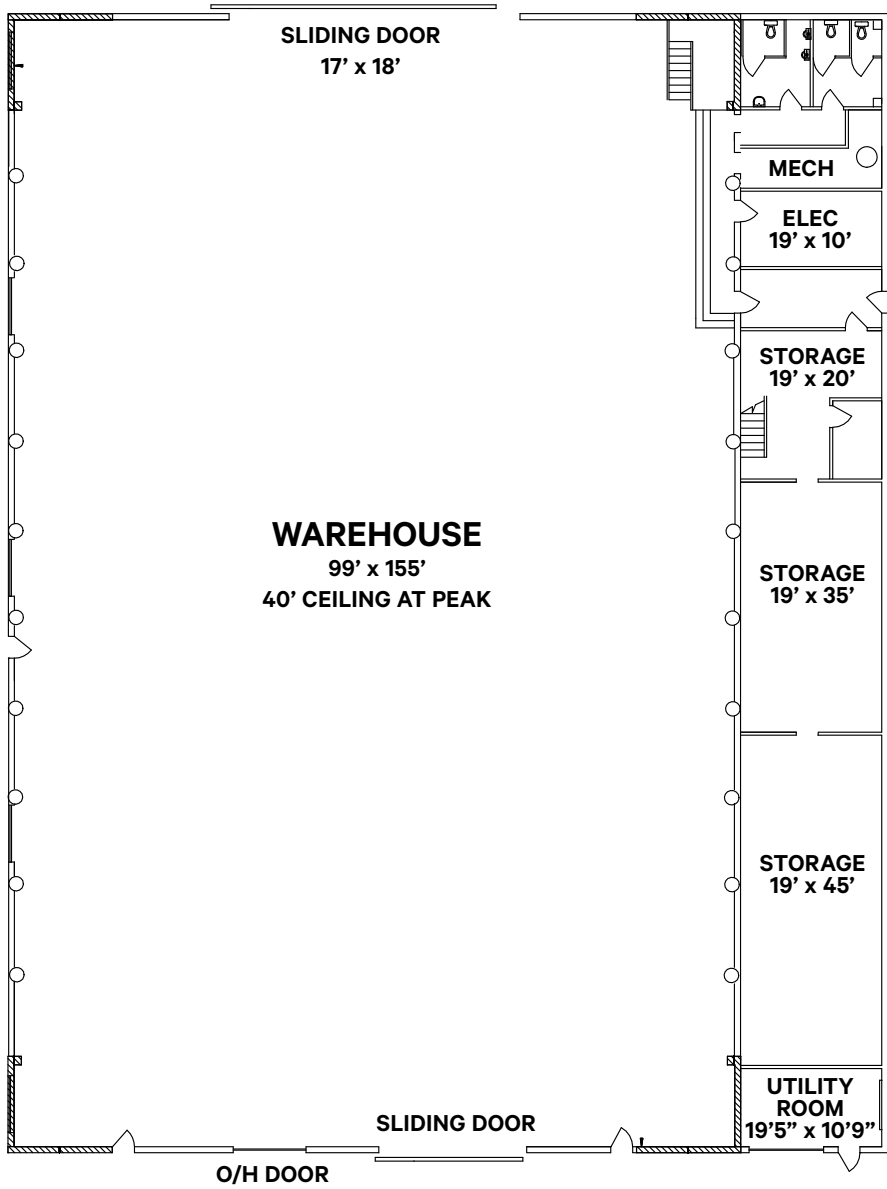
CREATIVE FINANCING AVAILABLE, CONTACT LISTING AGENTS



7450 Butler Road
Sooke Industrial Park

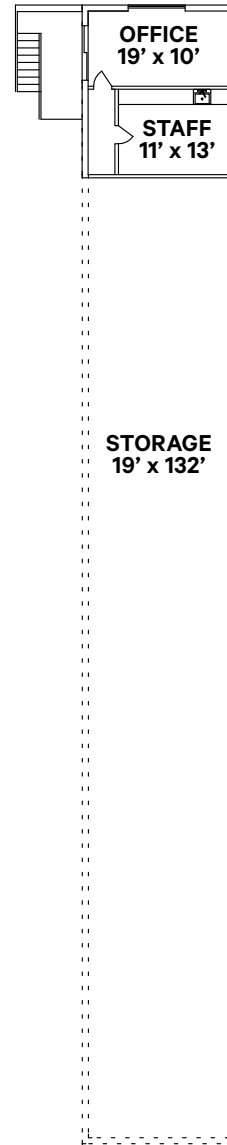
MAIN FLOOR

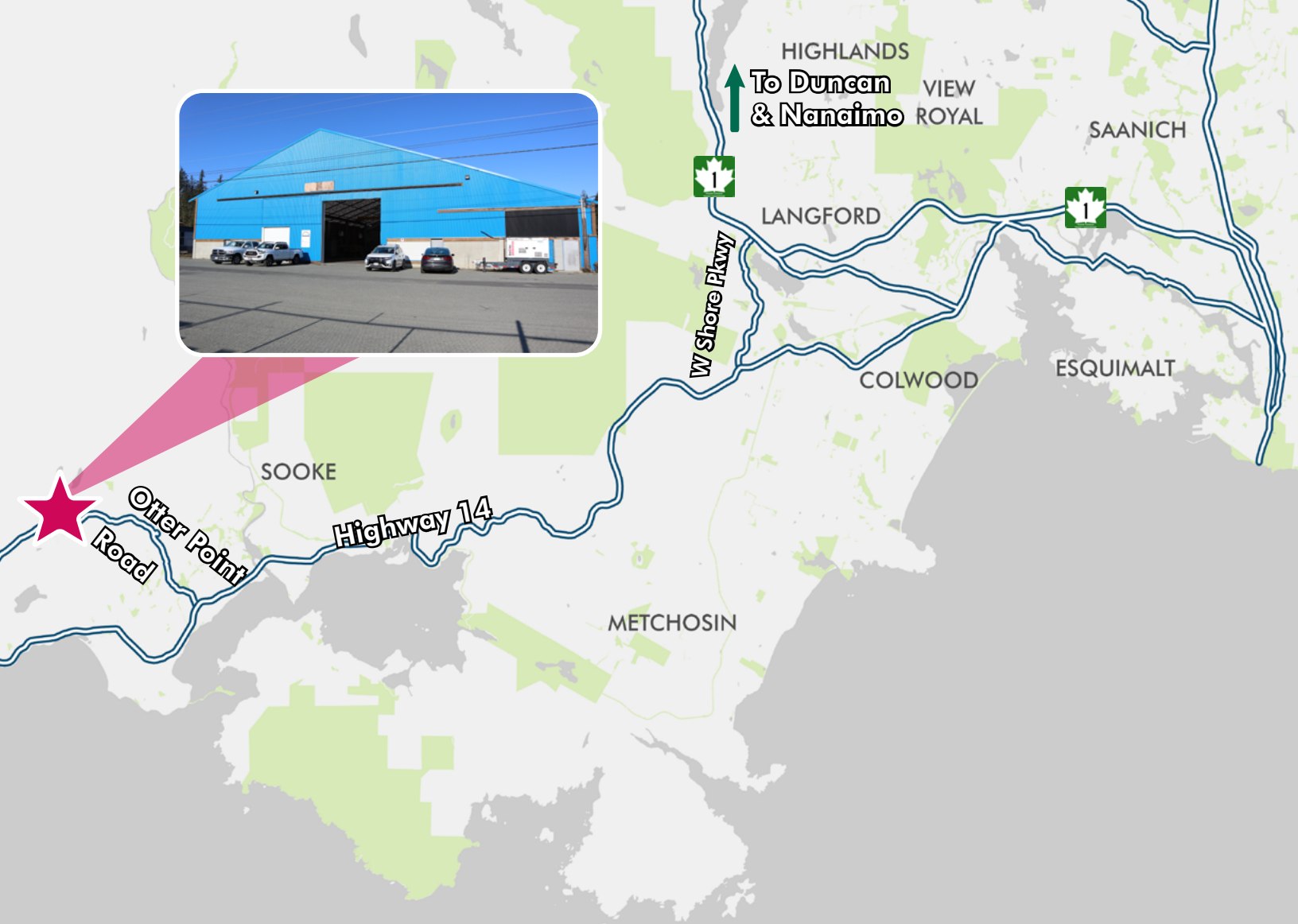
18,970 SF



MEZZ.

3,285 SF





**62 - 7450 BUTLER RD
SOOKE, BC**

For Sale or Lease

**22,255 SF INDUSTRIAL BUILDING
OWNER-OCCUPIER OPPORTUNITY**

EXCLUSIVE ADVISORS:

Chris Rust

Personal Real Estate Corporation
Senior Vice President
250 386 0005
chris.rust@cbre.com

Cooper Anderson

Sales Associate
250 386 0276
cooper.anderson@cbre.com

CBRE

www.cbre.ca
www.cbrevictoria.com

CBRE LIMITED 110- 800 YATES ST | VICTORIA, BC V8W 1L8 | WWW.CBREVICTORIA.COM

This disclaimer shall apply to CBRE Limited, Real Estate Brokerage, and to all other divisions of the Corporation; to include all employees and independent contractors ("CBRE"). The information set out herein, including, without limitation, any projections, images, opinions, assumptions and estimates obtained from third parties (the "Information") has not been verified by CBRE, and CBRE does not represent, warrant or guarantee the accuracy, correctness and completeness of the Information. CBRE does not accept or assume any responsibility or liability, direct or consequential, for the Information or the recipient's reliance upon the Information. The recipient of the Information should take such steps as the recipient may deem necessary to verify the Information prior to placing any reliance upon the Information. The Information may change and any property described in the Information may be withdrawn from the market at any time without notice or obligation to the recipient from CBRE. CBRE and the CBRE logo are the service marks of CBRE Limited and/or its affiliated or related companies in other countries. All other marks displayed on this document are the property of their respective owners. All Rights Reserved. Mapping Sources: Canadian Mapping Services canadamapping@cbre.com; DMTI Spatial, Environics Analytics, Microsoft Bing, Google Earth.