

For Sale

Exceptional Retail/Showroom Unit in High Traffic Development

108-950 Whirlaway Crescent - Langford, BC



The Offering

1,564 SF of Premium Retail/Showroom Space, Steps From Millstream Village & HWY 1

CBRE Victoria is pleased to present the opportunity to purchase premium ground floor retail/office space in Langford's busiest commercial node. This 2018 built unit features 1,564 square feet of beautifully built out showroom space which includes high end furnishings and appliances which can be included in the sale. Unit 108 features a fully functional kitchen with Fisher Paykel appliances, a two piece bathroom, and a separate shower room. This location provides easy access to Highway 1 and is surrounded by rapidly increasing residential density and endless amenities including Costco and Millstream Village.

- + Fully built-out with high end furnishings
- + Floor to ceiling windows provide ample natural light
- + Fisher Paykel kitchen appliances, Blomberg washer/dryer, Miel built-in coffee machine
- + Conveniently located providing easy access via Highway 1
- + Neighbourhood undergoing rapid densification (123 condos in the Triple Crown Development)
- + Situated amongst numerous successful retailers such as: Costco, Best Buy, Tesla, Market on Millstream
- + Blocks from the site of Langford's new Middle School development

Details

Legal Description

PID

Unit Size

Zoning

Electrical

Ceiling Height

Parking

Year Built

Property Taxes

Unit 108 - 950 Whirlaway Crescent

STRATA LOT 4, PLAN EPS5155, SECTION 112, ESQUIMALT LAND DISTRICT, & SEC 112A; TOGETHER WITH AN INTEREST IN THE COMMON PROPERTY IN PROPORTION TO THE UNIT ENTITLEMENT OF THE STRATA LOT AS SHOWN ON FORM V

030-642-744

1,564 SF

C6C - Neighbourhood Mixed-Use McCallum

225 amp 3-phase

11'6"

Common Stalls (Contact Agent)

2018

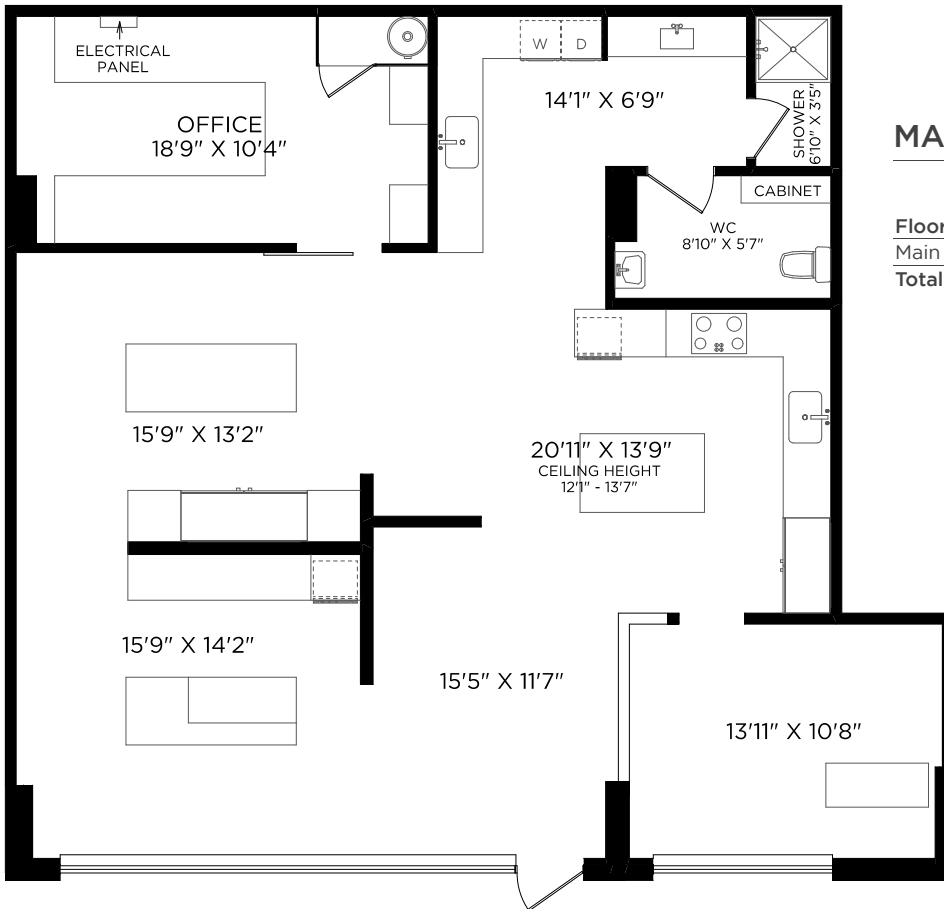
\$7,919

Price: \$995,000



Floor Plan

Open Concept Floor Plan Built Out with a Full Kitchen and High-End Finishings



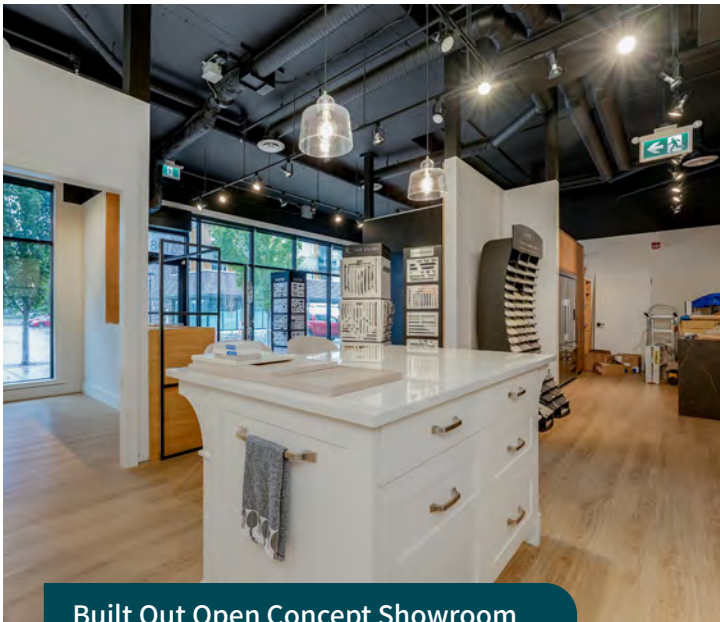
MAIN FLOOR

Floor	Finished	Unfinished	Total
Main	1564	0	1564
Total	1564	0	1564

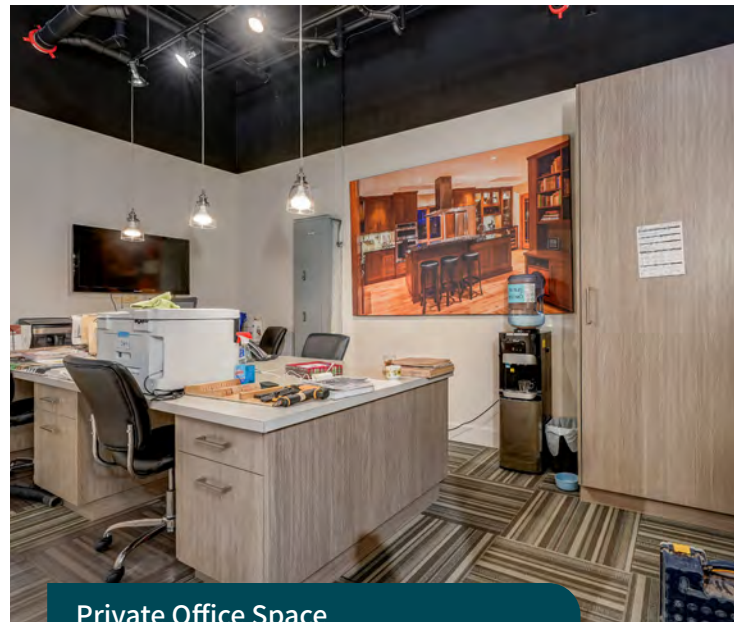
C6C Zone Permitted Uses

Include, but are not limited to:

- Retail
- Office
- Financial institution
- Medical clinic
- Personal service establishment
- Training and education facility
- Veterinary practice



Built Out Open Concept Showroom

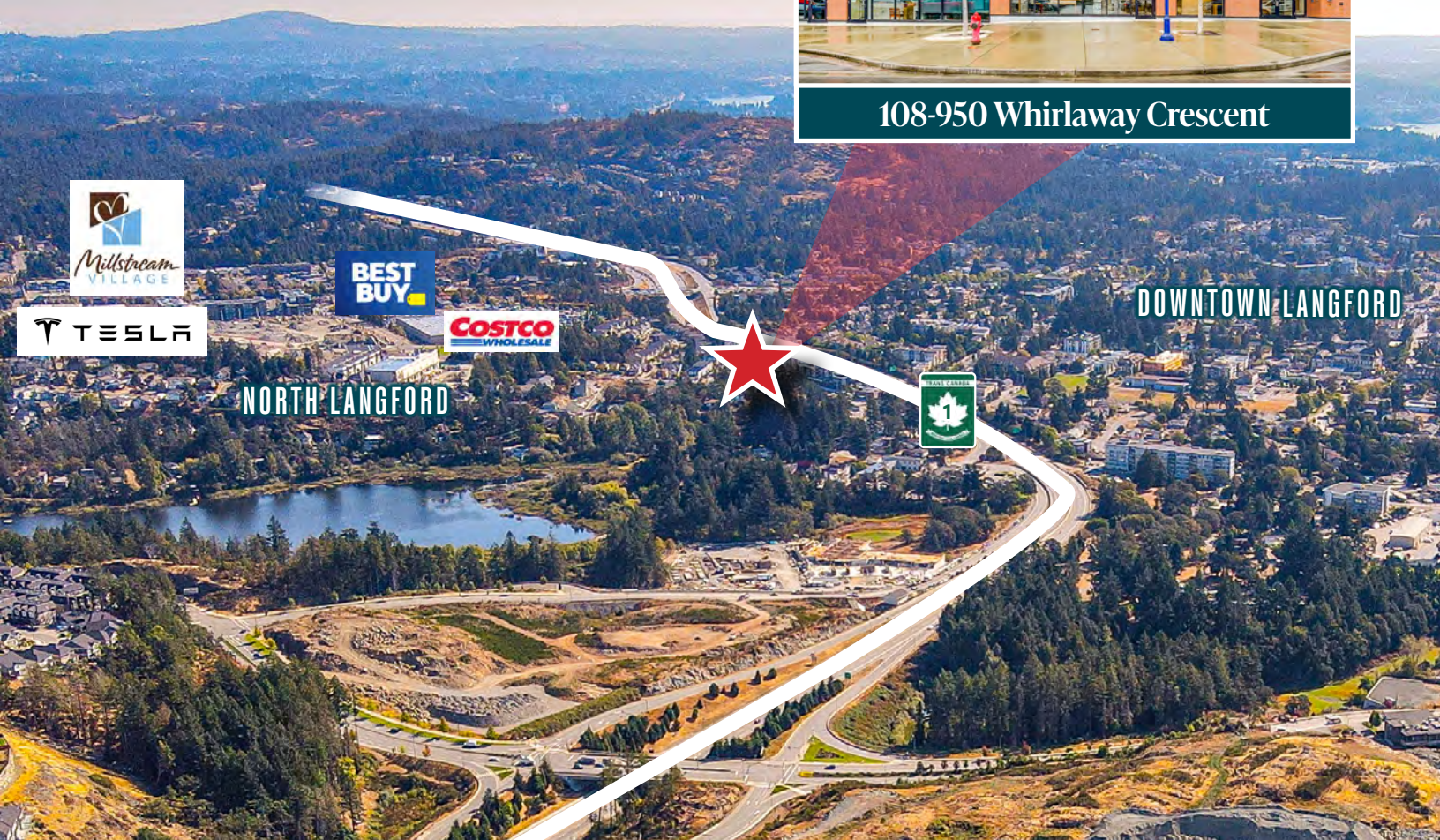


Private Office Space

For Sale



108-950 Whirlaway Crescent



Exceptional Retail/Showroom Unit Steps From Highway 1

EXCLUSIVE ADVISORS:

Cooper Anderson

Sales Associate
Investment Properties Group Victoria
250 386 0276
cooper.anderson@cbre.com

Ross Marshall

Personal Real Estate Corporation
Senior Vice President
Investment Properties Group Victoria
250 386 0004
ross.marshall@cbre.com



www.cbre.ca
www.cbrevictoria.com

CBRE Limited | 110-800 Yates Street, Victoria, BC V8W 1L8 | 250 386 0000

This disclaimer shall apply to CBRE Limited, Real Estate Brokerage, and to all other divisions of the Corporation; to include all employees and independent contractors ("CBRE"). The information set out herein, including, without limitation, any projections, images, opinions, assumptions and estimates obtained from third parties (the "Information") has not been verified by CBRE, and CBRE does not represent, warrant or guarantee the accuracy, correctness and completeness of the Information. CBRE does not accept or assume any responsibility or liability, direct or consequential, for the Information or the recipient's reliance upon the Information. The recipient of the Information should take such steps as the recipient may deem necessary to verify the Information prior to placing any reliance upon the Information. The Information may change and any property described in the Information may be withdrawn from the market at any time without notice or obligation to the recipient from CBRE. CBRE and the CBRE logo are the service marks of CBRE Limited and/or its affiliated or related companies in other countries. All other marks displayed on this document are the property of their respective owners. All Rights Reserved. Mapping Sources: Canadian Mapping Services canadamapping@cbre.com; DMTI Spatial, EnviroNics Analytics, Microsoft Bing, Google Earth.