

FOR LEASE

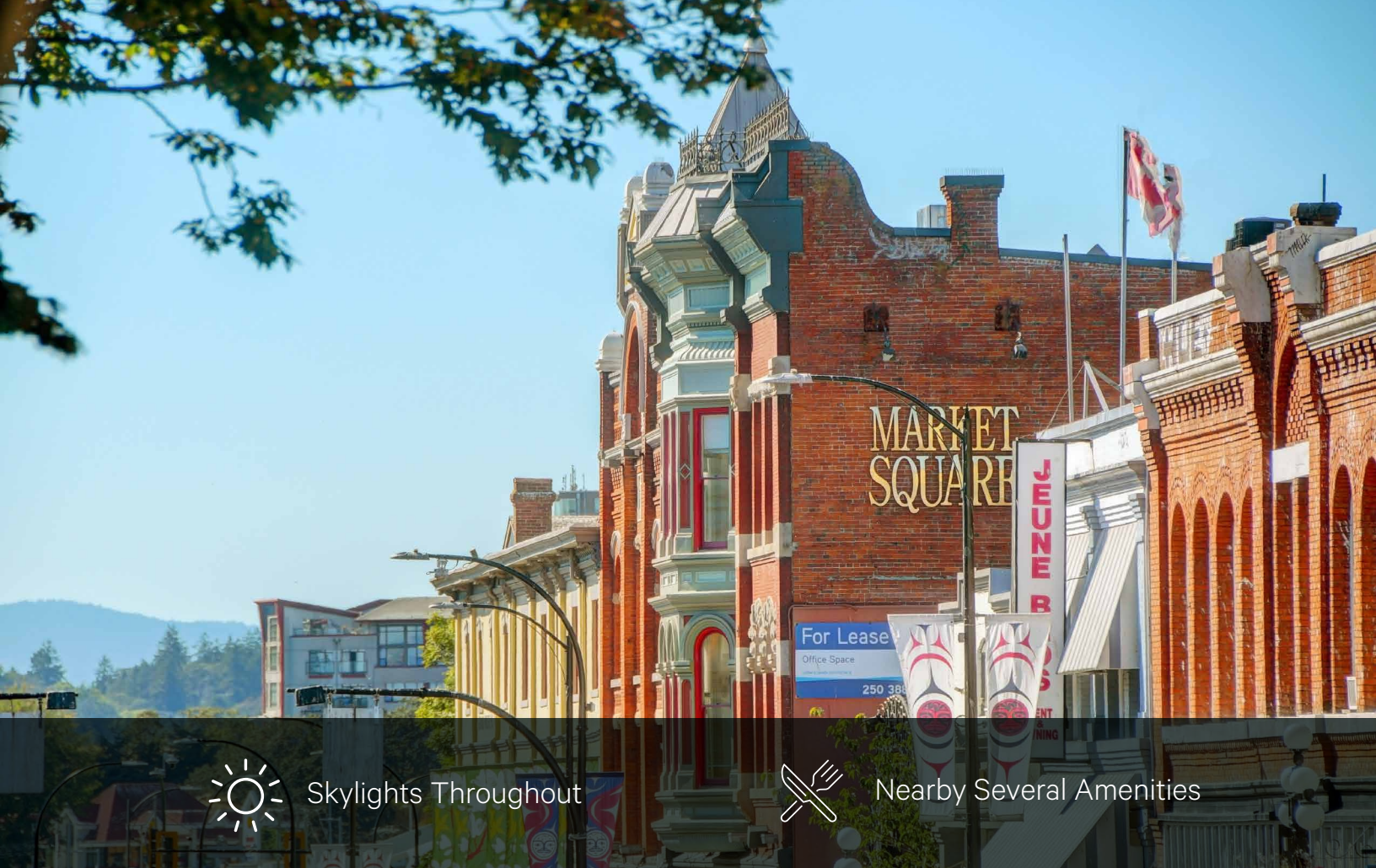
576B

JOHNSON STREET



LOWER JOHNSON STREET OFFICE SPACE

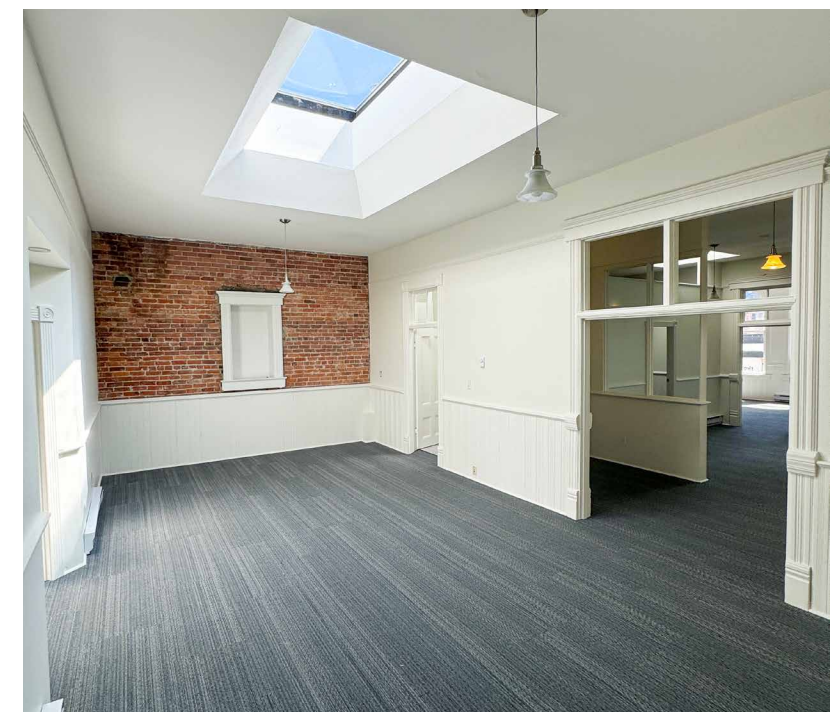
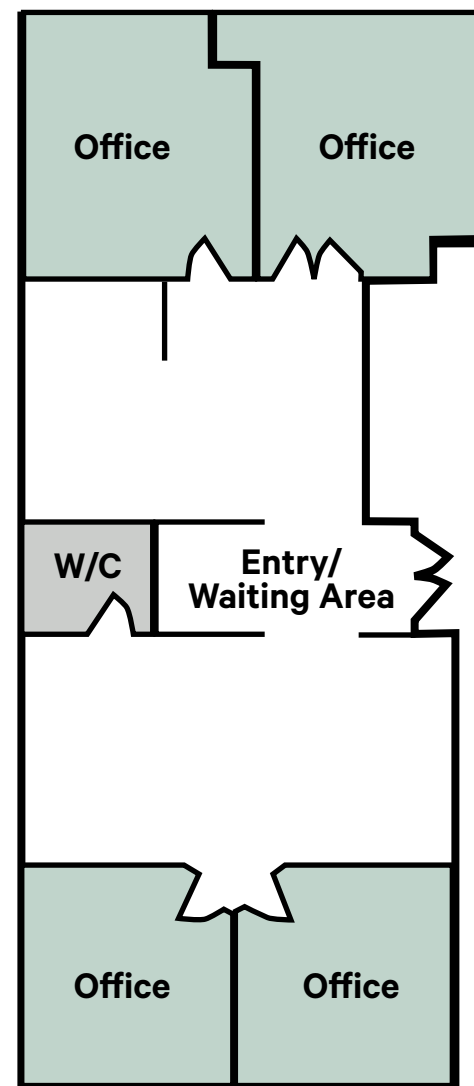
CBRE



Skylights Throughout



Nearby Several Amenities



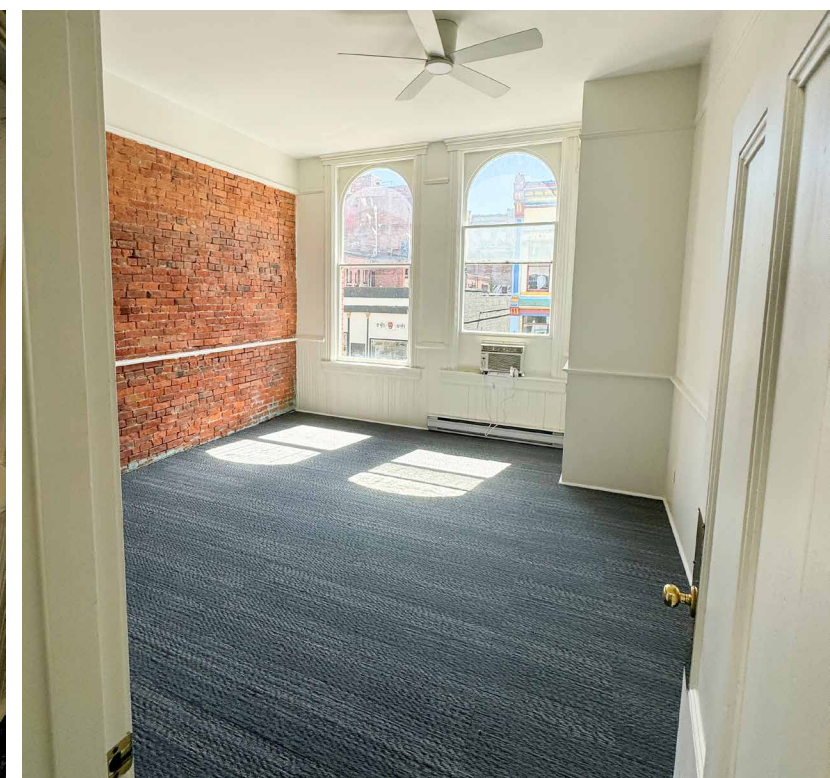
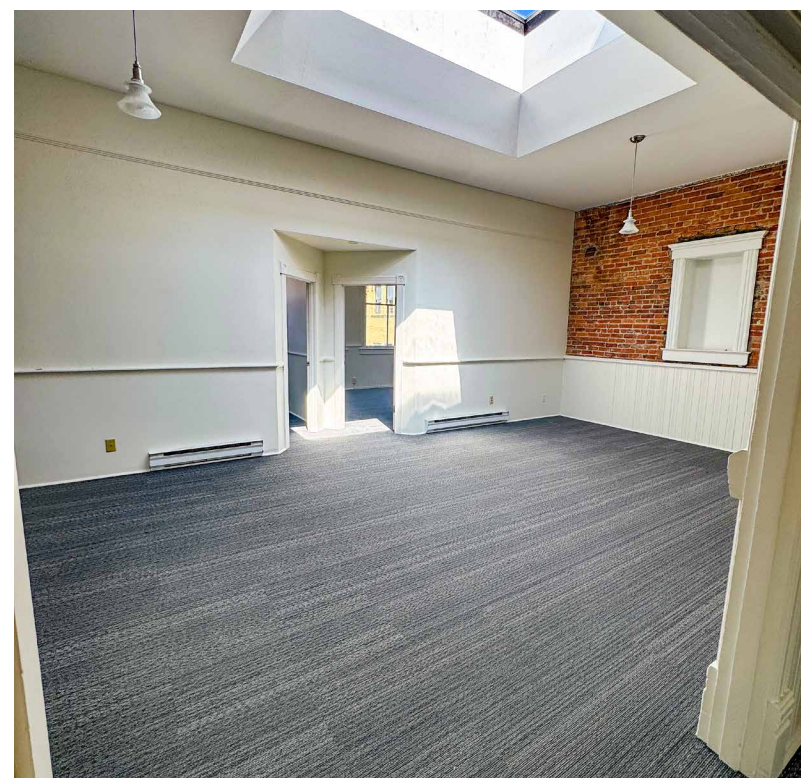
THE OPPORTUNITY

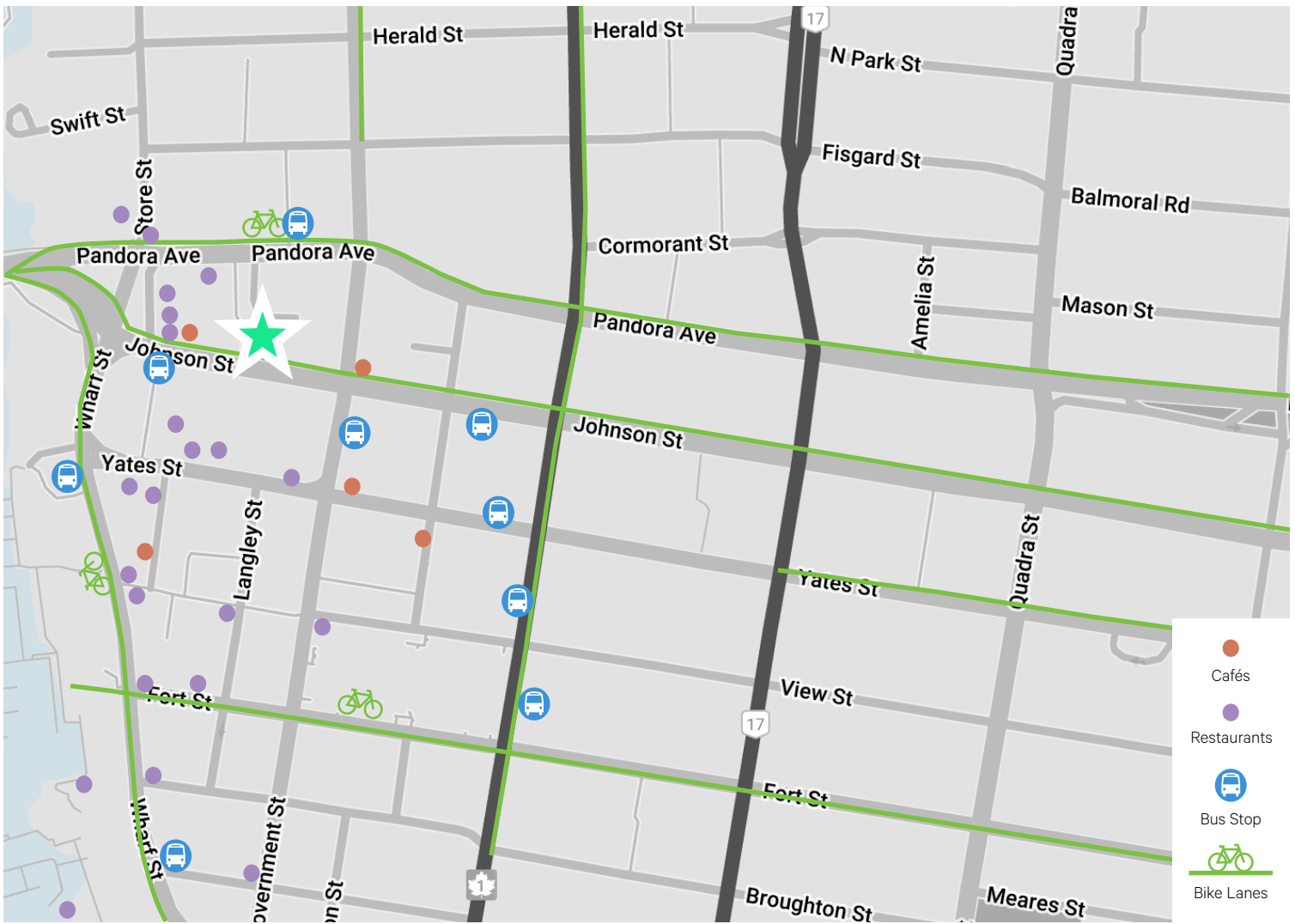
CBRE Limited is pleased to offer 576B Johnson Street for lease. This 1,624 sq. ft. office unit boasts an open workspace, exposed brick walls, four offices, a reception area, a waiting area, and a private washroom. Abundant natural light floods the space through skylights. Located in the heart of Victoria's shopping district, this distinctive unit is well-suited for a variety of businesses, thanks to its flexible OTD-1 zoning.

UNIT DETAILS

SIZE	1,624 SF
LEASE RATE	\$17.00 PSF
ADDITIONAL RENT	\$12.00 PSF
ZONING	OTD-1: Old Town District

- 1** Reserved Parking Stall
- 4** Offices
- 1** Washroom





DOWNTOWN VICTORIA

Lower Johnson Street stands out as a distinctive shopping district in the heart of Victoria. It seamlessly blends history, creativity, and modern flair. From eclectic boutiques to cozy cafes, Lower Johnson caters to all. Whether on foot, cycling, or arriving by bus, this vibrant area is well-connected. Plus, being steps away from the Inner Harbour and adjacent to Market Square, there are hidden gems to discover around every corner.

CONTACT

Andrea Teahen

Senior Associate

andrea.teahen@cbre.com

250 813 3377

CBRE Limited | www.cbrevictoria.com | 110-800 Yates Street, Victoria BC, V8W 1L8 | 250 386 0000

CBRE

This disclaimer shall apply to CBRE Limited, Real Estate Brokerage, and to all other divisions of the Corporation; to include all employees and independent contractors ("CBRE"). The information set out herein, including, without limitation, any projections, images, opinions, assumptions and estimates obtained from third parties (the "Information") has not been verified by CBRE, and CBRE does not represent, warrant or guarantee the accuracy, correctness and completeness of the Information. CBRE does not accept or assume any responsibility or liability, direct or consequential, for the Information or the recipient's reliance upon the Information. The recipient of the Information should take such steps as the recipient may deem necessary to verify the Information prior to placing any reliance upon the Information. The Information may change and any property described in the Information may be withdrawn from the market at any time without notice or obligation to the recipient from CBRE. CBRE and the CBRE logo are the service marks of CBRE Limited and/or its affiliated or related companies in other countries. All other marks displayed on this document are the property of their respective owners. All Rights Reserved.