

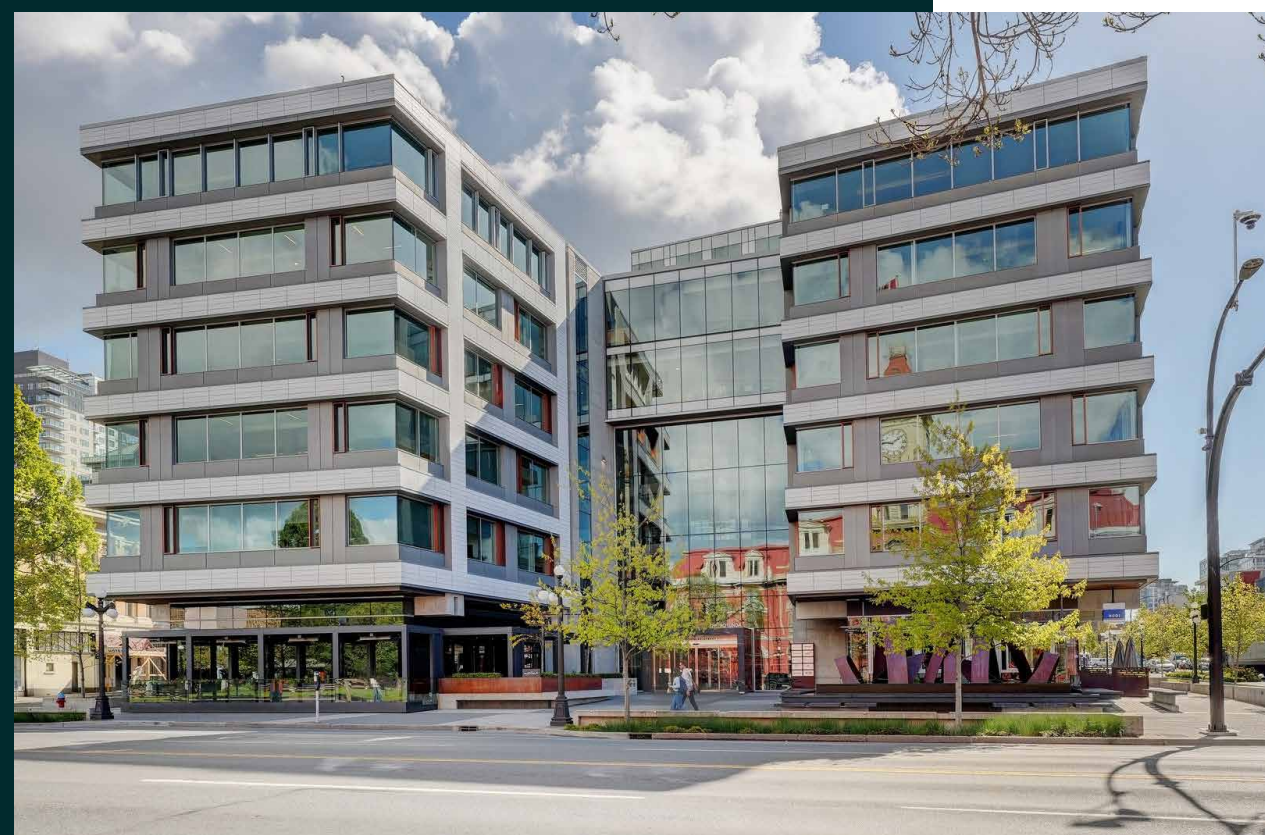
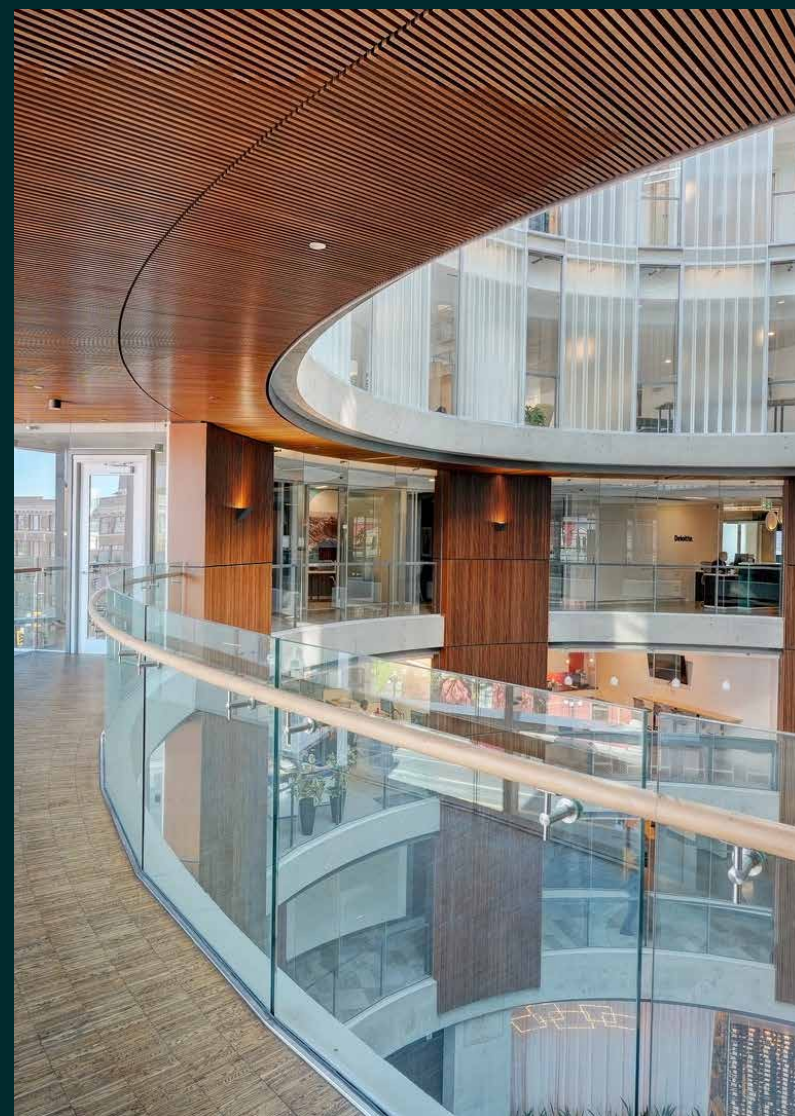
410

unit

1515 Douglas Street

CLASS AA OFFICE FOR SUBLEASE





410

unit

1515 DOUGLAS STREET

CBRE Limited presents the opportunity to sublease a turnkey office in The Rotunda. Located in Unit 410 at 1515 Douglas Street, with 8,452 sq. ft. of class AA office space. The unit features 8 spacious offices, a boardroom, 3 call rooms/breakout rooms, copy room, fully equipped kitchen, lounge area, and a wellness room. There are several windows throughout the office providing ample natural light and large windows that overlook the atrium lobby. Common washrooms are located directly beside the unit. The Rotunda amenities include 24 HR security, bicycle storage, a fitness facility, showers and change rooms, and secure underground parking. Plus, two restaurants within the building, Marilena Cafe & Raw Bar and Rudi. Additional parking is available at Centennial Square Parkade and ample street parking nearby.

Building Amenities



Bicycle Storage



Restaurants On-Site



Secure Underground Parking



Showers & Changerooms



Fitness Facility



24 HR Security

Unit Amenities



Fully Equipped Kitchen

8

Spacious Offices



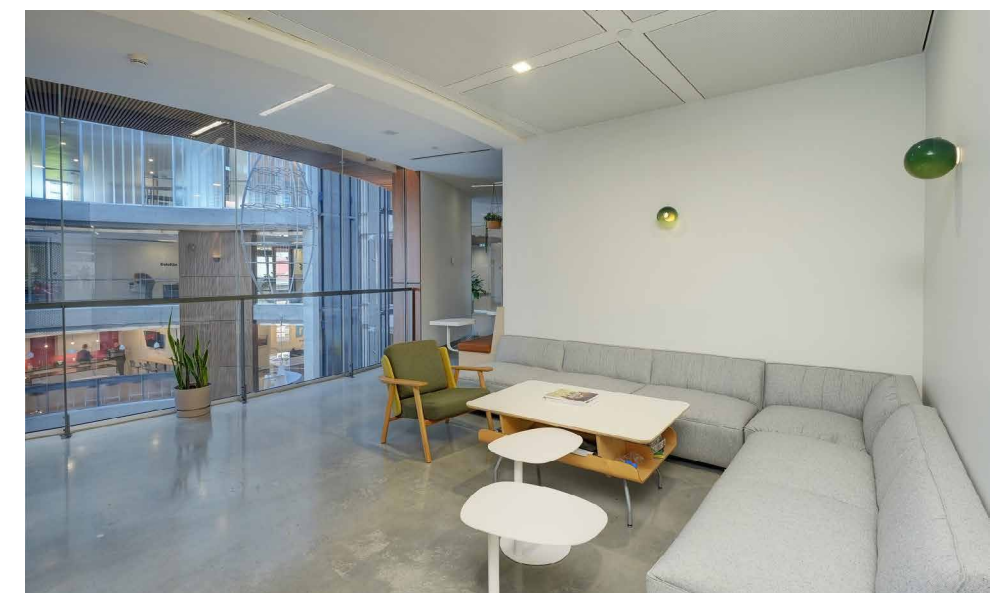
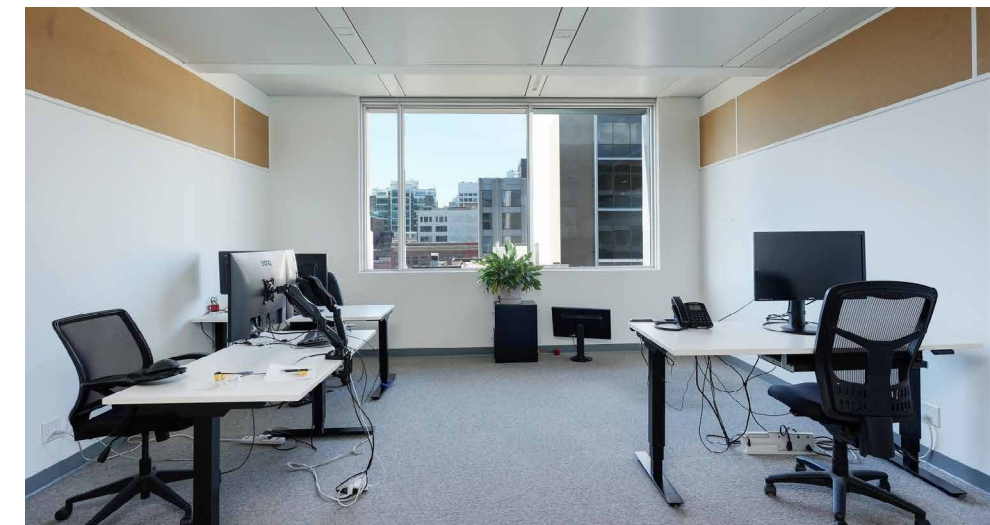
Wellness Room

4

Boardrooms/Breakout Rooms

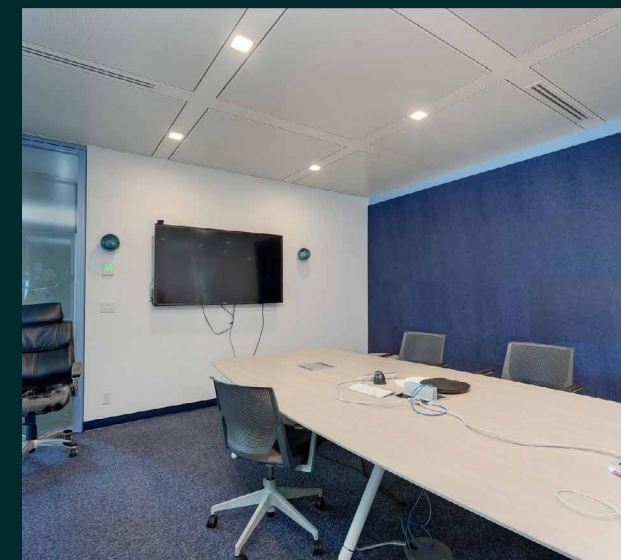
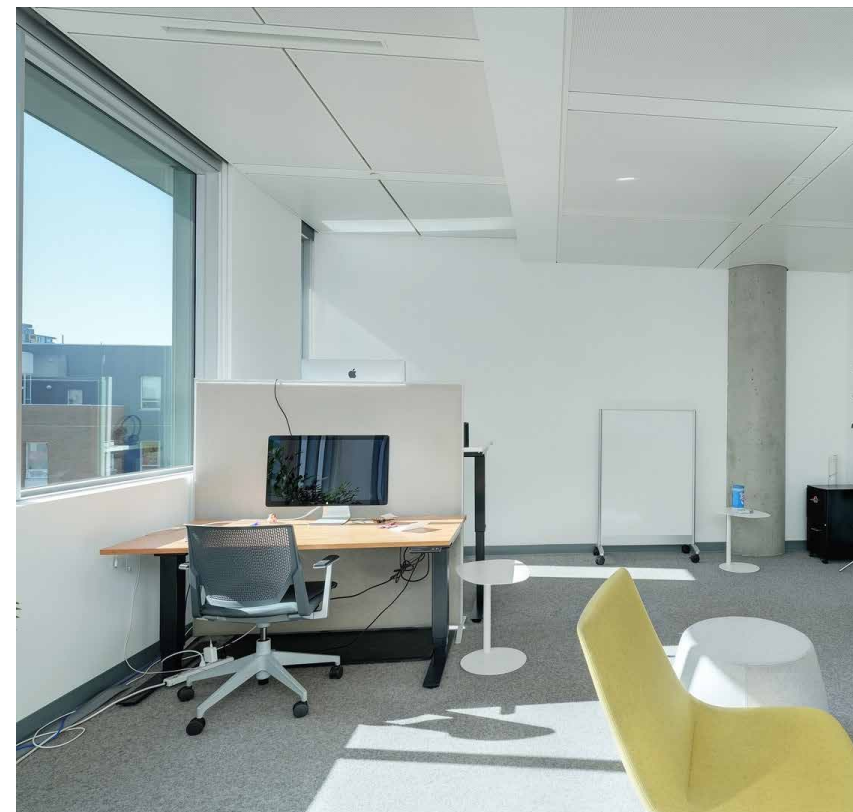
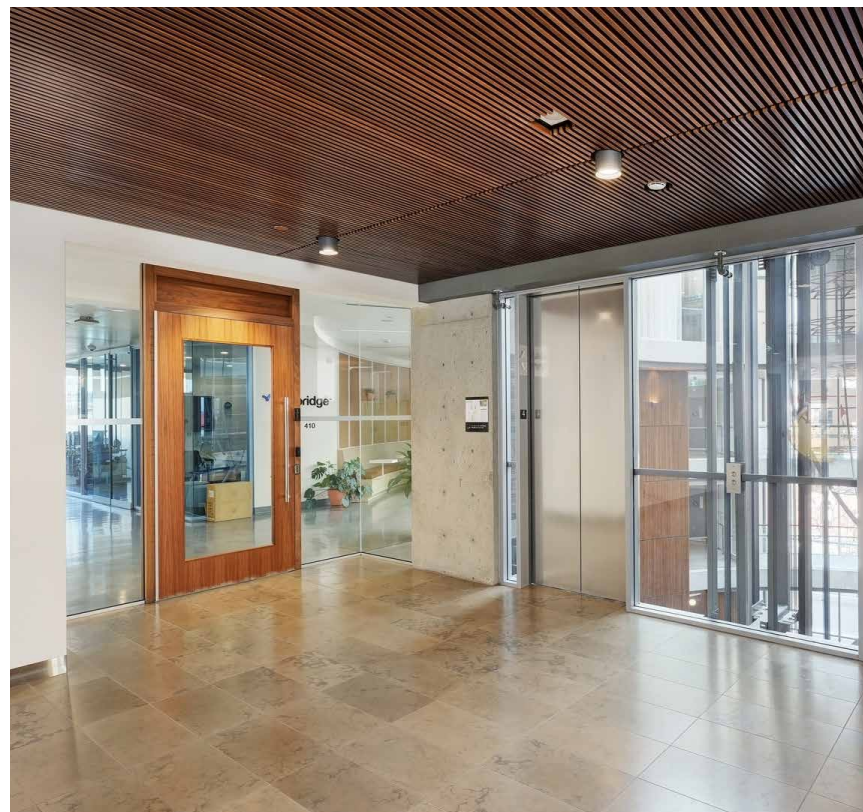
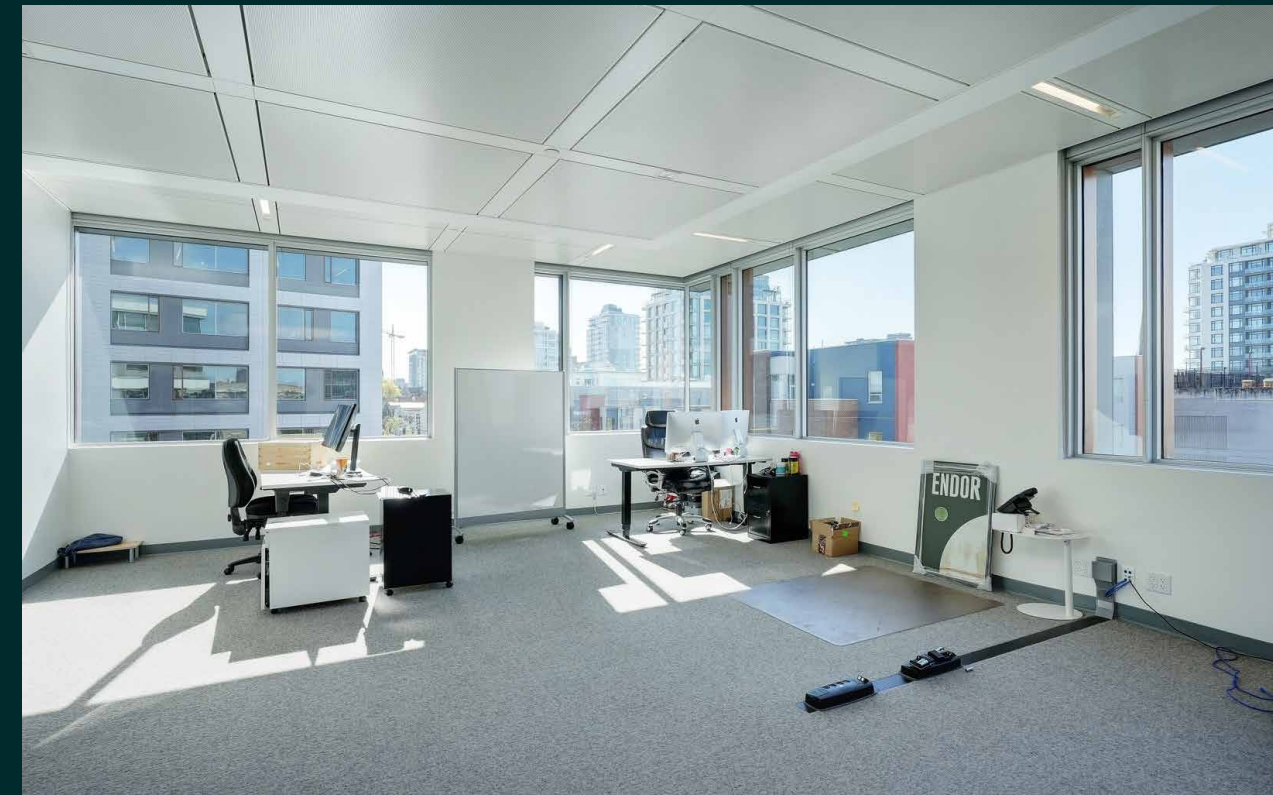
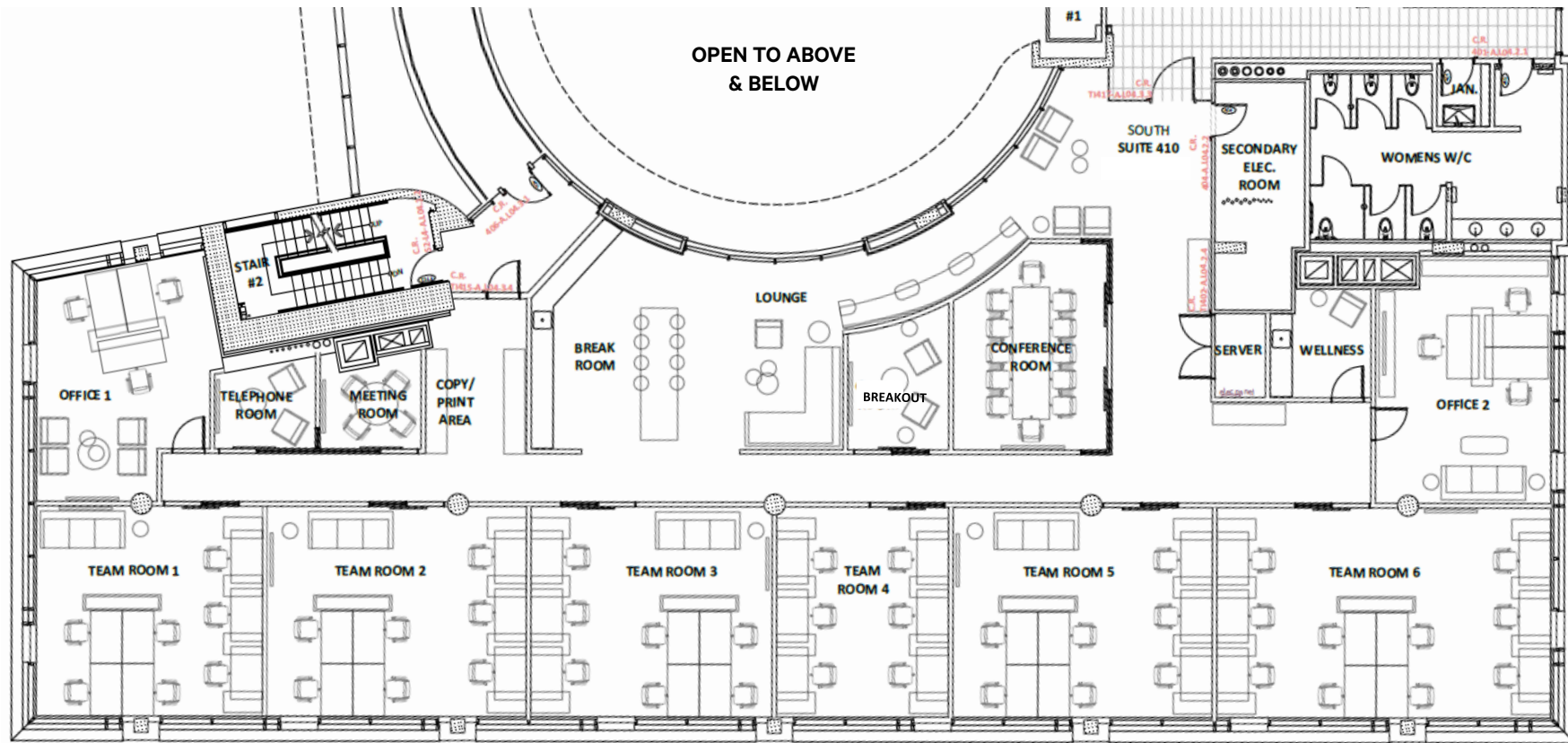
Unit Details

SIZE	8,452 SF
SUBLEASE RATE	Contact Listing Agent
ADDITIONAL RENT	\$20.71 PSF
AVAILABILITY	Immediately
ZONING	CBD-2: Central Business District-2
PARKING	4 stalls at \$315/month 1 EV stall at \$325/month



Floor Plan

Unit 410 - 8,452 SF



Location

Restaurants & Bars

- 1 Tacofino
- 2 Nubo Japanese Tapas
- 3 Green Leaf Bistro
- 4 YuaBistro
- 5 The Palms Restaurant & Lounge
- 6 The Mint
- 7 Ruby on Johnson
- 8 Sizzling Tandoor
- 9 Block Kitchen + Bar
- 10 Il Terrazzo
- 11 Earls Kitchen + Bar
- 12 Cactus Club Cafe

Cafes

- 1 Tim Hortons
- 2 Macchiato Caffe
- 3 Habit Coffee
- 4 Tombo Eats
- 5 Starbucks
- 6 Bubby Rose's Downtown
- 7 Hey Happy
- 8 Habit Coffee

Retail & Services

- 1 London Drugs
- 2 Market on Yates
- 3 Liquor Express on Yates
- 4 Shoppers Drug Mart
- 5 The Bay Centre
- 6 Vintage Spirits Liquor Store
- 7 Victoria City Hall
- 8 Liquor Plus Administration

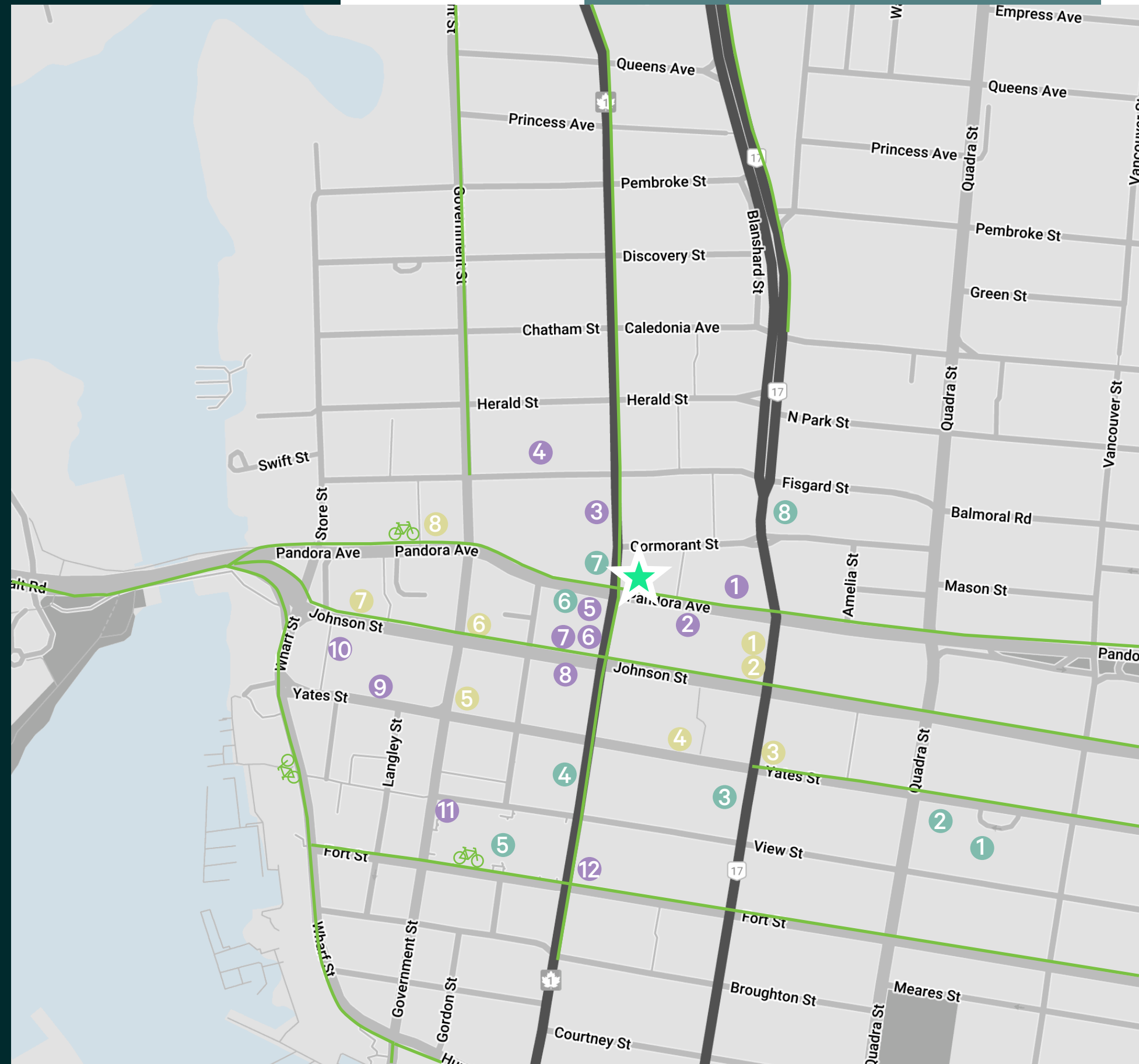


 Unit 410 - 1515 Douglas

99
WALK SCORE

99
BIKE SCORE

93
TRANSIT SCORE



410

unit

1515 Douglas Street

CLASS AA OFFICE FOR SUBLEASE

CONTACT US

Jeff Lougheed
Vice President
jeff.lougheed@cbre.com
250 386 0001

Andrea Teahen
Senior Associate
andrea.teahen@cbre.com
250 813 3377

CBRE Limited | www.cbrevictoria.com | 110-800 Yates Street, Victoria BC, V8W 1L8 | 250 386 0000 **CBRE**

This disclaimer shall apply to CBRE Limited, Real Estate Brokerage, and to all other divisions of the Corporation; to include all employees and independent contractors ("CBRE"). The information set out herein, including, without limitation, any projections, images, opinions, assumptions and estimates obtained from third parties (the "Information") has not been verified by CBRE, and CBRE does not represent, warrant or guarantee the accuracy, correctness and completeness of the Information. CBRE does not accept or assume any responsibility or liability, direct or consequential, for the Information or the recipient's reliance upon the Information. The recipient of the Information should take such steps as the recipient may deem necessary to verify the Information prior to placing any reliance upon the Information. The Information may change and any property described in the Information may be withdrawn from the market at any time without notice or obligation to the recipient from CBRE. CBRE and the CBRE logo are the service marks of CBRE Limited and/or its affiliated or related companies in other countries. All other marks displayed on this document are the property of their respective owners. All Rights Reserved.