



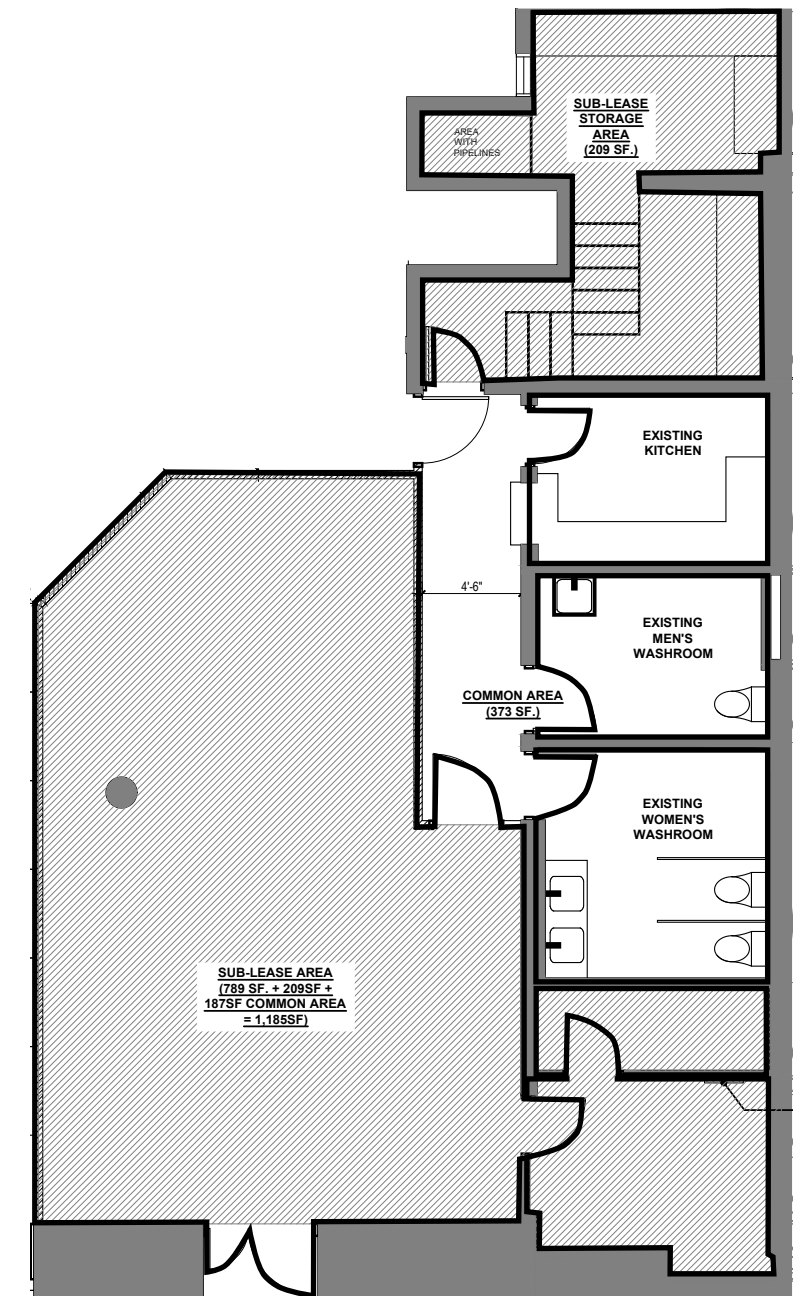
Unit 102 - 1600 Government Street

High-Profile Retail Space in Downtown Victoria

The Opportunity

High-Profile Retail Space on Government Street

CBRE Limited is pleased to present the opportunity to sublease 789 SF of prime retail space in the heart of Victoria's bustling downtown district. Located at 1600 Government St, the subject property benefits from strong street front exposure, an abundance of local attractions, including Chinatown and Centennial Square, high local and tourist traffic, and an already established business community. The unit boasts an open floor plan, access to two common washrooms, and a storage area. Flexible OTD-1 zoning accommodates for a range of business uses, including Food & Beverage, Drinking Establishment, Retail, Personal Service, Office, and more.



PROPERTY DETAILS

SIZE	789 SF + 209 SF Storage Area
LEASE RATE	Contact Listing Agent
ZONING	OTD-1: Old Town District-1
AVAILABILITY	Immediately



Hightlights

- + Flexible Zoning
- + Two Shared Washrooms
- + Proximity to Local Attractions
- + Prominent Signage Opportunities
- + Direct Street Front Access & Exposure from Government St

The Neighbourhood

Old Town District

Victoria's Old Town District is a historic and vibrant area home to numerous shops, restaurants, and cultural sites, including the famous Bastion Square, Market Square, and Chinatown, the oldest in Canada. Offering a blend of old-world allure and modern amenities, the Old Town District is a popular spot for tourists and locals alike.



Nearby Amenities

- + Chinatown
- + City Hall
- + Habit Coffee
- + Centennial Square
- + Freshslice Pizza
- + Market Square
- + Swans Hotel & Pub
- + Yates Street Parkade
- + Jam Café
- + Virtuous Pie

Contact Us

Jeff Lougheed

Vice President
250 386 0001
jeff.lougheed@cbre.com

Mitch Bryan

Associate
250 532 1030
mitch.bryan@cbre.com

CBRE

www.cbrevictoria.com | www.cbre.ca

This disclaimer shall apply to CBRE Limited, Real Estate Brokerage, and to all other divisions of the Corporation; to include all employees and independent contractors ("CBRE"). All references to CBRE Limited herein shall be deemed to include CBRE, Inc. The information set out herein, including, without limitation, any projections, images, opinions, assumptions and estimates obtained from third parties (the "Information") has not been verified by CBRE, and CBRE does not represent, warrant or guarantee the accuracy, correctness and completeness of the Information. CBRE does not accept or assume any responsibility or liability, direct or consequential, for the Information or the recipient's reliance upon the Information. The recipient of the Information should take such steps as the recipient may deem necessary to verify the Information prior to placing any reliance upon the Information. The Information may change and any property described in the Information may be withdrawn from the market at any time without notice or obligation to the recipient from CBRE. CBRE and the CBRE logo are the service marks of CBRE Limited and/or its affiliated or related companies in other countries. All other marks displayed on this document are the property of their respective owners. All Rights Reserved.