



Quadra Plaza

1420 Quadra Street | Victoria, BC

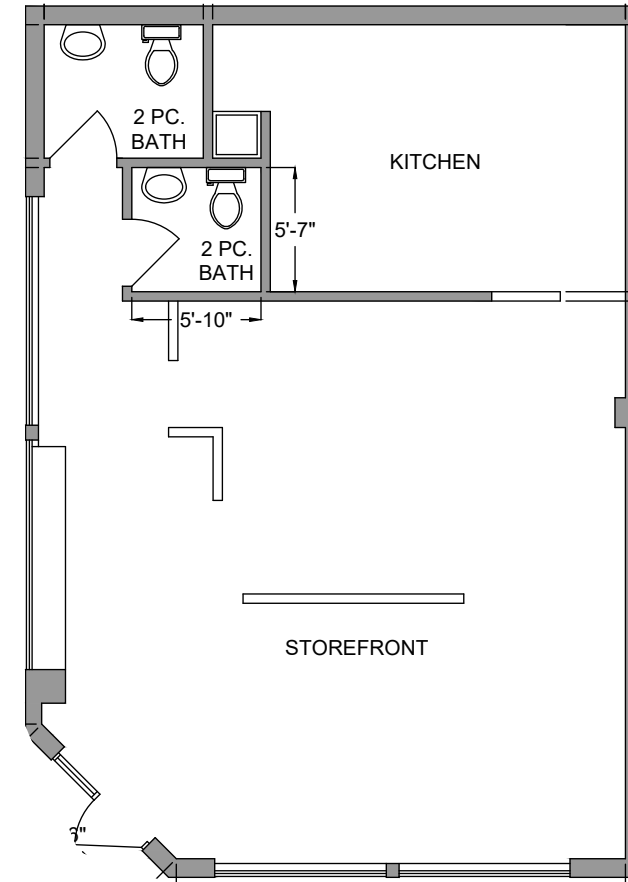
Corner Restaurant Opportunity in Downtown Victoria

Retail | For Lease

CBRE

Opportunity

CBRE Limited is pleased to present the opportunity to lease 1,033 square feet of high-exposure retail space at Quadra Plaza. The subject property includes an existing kitchen, offering a rare opportunity to lease turnkey quick-service restaurant space. Quadra Plaza benefits from ample on-site parking, a strong tenant mix, and prominent signage opportunities. With easy access from both Quadra St and Pandora Ave, the plaza provides convenience and easy accessibility for tenants and customers alike. With flexible zoning and an abundance of lifestyle amenities within walking distance, Unit 104 at Quadra Plaza offers an excellent opportunity to lease in a bustling business landscape.



Property Details

Rentable Area	1,033 SF
Asking Net Rent	Contact Listing Agent
Additional Rent	\$14.00 PSF (est.)
Zoning	CBD-1: Central Business District-1 - Site Specific

Features

- Strong Tenant Mix
- Corner Retail Space
- Ample On-Site Parking
- Existing Kitchen Space
- Prominent Signage Opportunities




Location

Quadra Plaza is strategically situated in the heart of Downtown Victoria, commanding a prominent position at the bustling intersection of Quadra Street and Pandora Avenue. This vibrant area is dotted with a plethora of retail spaces, providing a wide array of opportunities for business to thrive and cater to the local and visiting clientele. The constant flow of foot traffic in this high visibility location ensures a steady stream of potential customers, making it a strategic choice for any business.


Neighbourhood Tenants

- Save-On-Foods
- Bold Butchery & Grill
- CareMed Pharmacy
- Nor. Coffee
- Tacofino
- Anytime Fitness
- Tim Hortons
- McDonald's
- Superbaba
- Wildfire Bakery






97
Biker's Paradise



99
Walker's Paradise



93
Rider's Paradise



Jeff Lougheed

Vice President
 jeff.lougheed@cbre.com
 250-386-0001

Mitch Bryan

Associate
 mitch.bryan@cbre.com
 250-532-1030

CBRE Limited | 110-800 Yates Street | Victoria, BC V8W 1L8 | www.cbre.ca | www.cbrevictoria.ca



This disclaimer shall apply to CBRE Limited, Real Estate Brokerage, and to all other divisions of the Corporation; to include all employees and independent contractors ("CBRE"). The information set out herein, including, without limitation, any projections, images, opinions, assumptions and estimates obtained from third parties (the "Information") has not been verified by CBRE, and CBRE does not represent, warrant or guarantee the accuracy, correctness and completeness of the Information. CBRE does not accept or assume any responsibility or liability, direct or consequential, for the Information or the recipient's reliance upon the Information. The recipient of the Information should take such steps as the recipient may deem necessary to verify the Information prior to placing any reliance upon the Information. The Information may change and any property described in the Information may be withdrawn from the market at any time without notice or obligation to the recipient from CBRE. CBRE and the CBRE logo are the service marks of CBRE Limited and/or its affiliated or related companies in other countries. All other marks displayed on this document are the property of their respective owners. All Rights Reserved.

Mapping Sources: Canadian Mapping Services canadamapping@cbre.com; DMTI Spatial, Environics Analytics, Microsoft Bing, Google Earth.