

Office/Retail | For Lease

CBRE

Built Out Office/Retail Space in Blanshard Centre

UNIT 3 - 772 BAY STREET | VICTORIA, BC

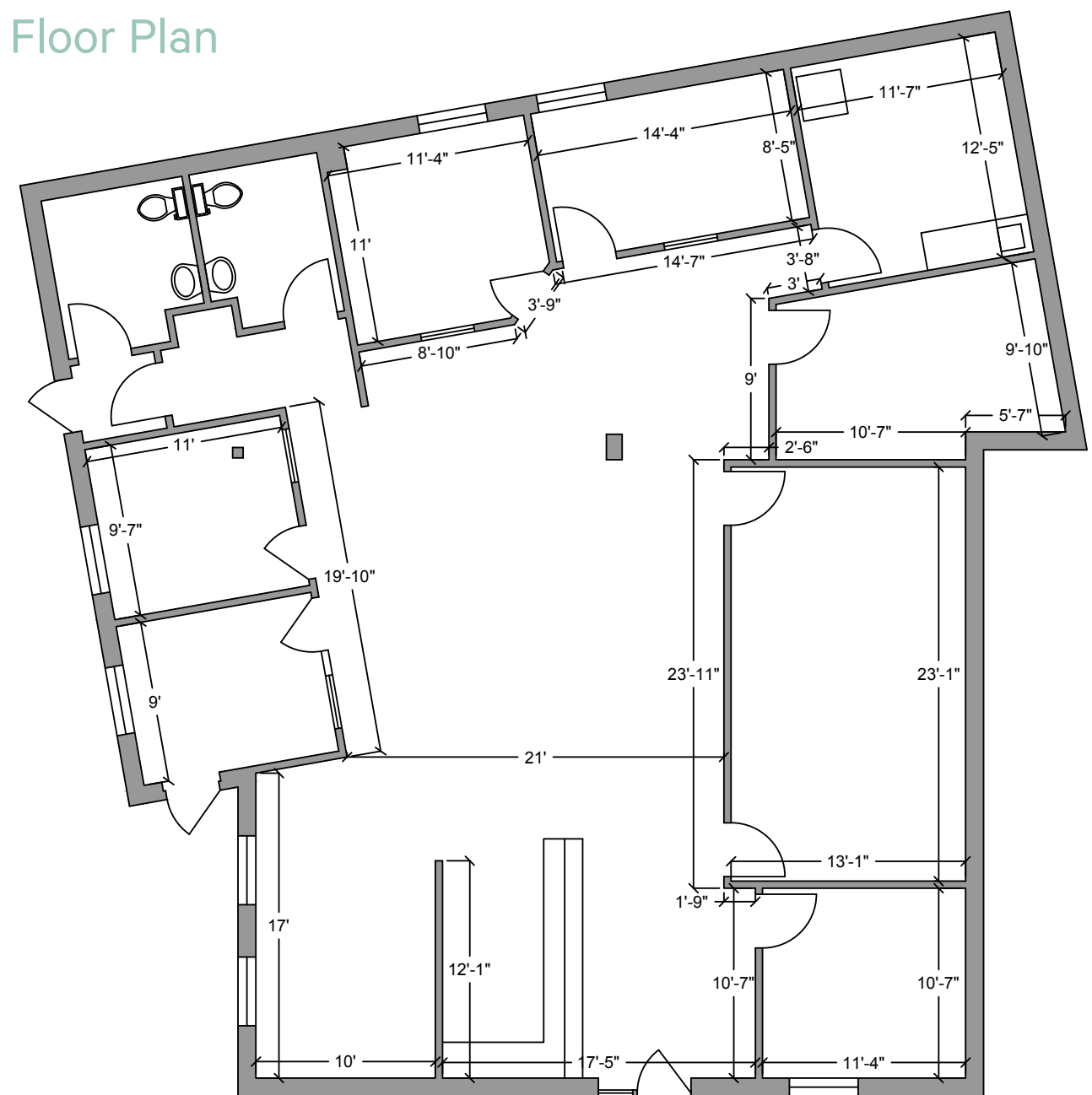




Blanshard Centre

Unit 3 at 772 Bay Street presents the exceptional opportunity to lease fully built out office/retail space in Blanshard Centre. The subject property boasts 8 offices/rooms, 2 washrooms, and an open reception area. Ample on-site parking is provided to all tenants of the centre. The location ensures accessibility for both businesses and customers, with major routes suitable for all modes of transportation nearby. Blanshard Centre offers convenience and accessibility to a wide range of customer bases.

Floor Plan



Available immediately

Property Details

Available Area	2,650 SF
Basic Rent	\$23.00 PSF
Additional Rent	\$14.00 PSF (est.)
Zoning	C-1T: Limited Commercial Transient Accommodation

Space Features


- + Ample On-Site Parking
- + Recently Renovated Exterior Finishes
- + Excellent Walk, Bike, and Transit Scores

Location

Blanshard Centre is located outside of Downtown Victoria, at the intersection of Blanshard Street and Bay Street. The centre strategically accommodates a diverse array of business, from retail to service to office spaces, creating a dynamic and thriving environment. Blanshard Centre is the ideal destination for businesses seeking a well-connected, vibrant, flourishing commercial space.




95
Biker's Paradise


95
Walker's Paradise


87
Rider's Paradise

Neighbourhood Tenants

- + Wendy's
- + Subway
- + Dominos
- + Tim Hortons
- + Meet on Blanshard
- + Popeye's Supplements

Contact Agent

Jeff Lougheed
Vice President
jeff.lougheed@cbre.com
250 386 0001

Mitch Bryan
Associate
mitch.bryan@cbre.com
250 532 1030



CBRE Limited
1026 Fort Street, Victoria BC, V8V 3K4
www.cbre.ca | www.cbrevictoria.ca

This disclaimer shall apply to CBRE Limited, Real Estate Brokerage, and to all other divisions of the Corporation; to include all employees and independent contractors ("CBRE"). The information set out herein, including, without limitation, any projections, images, opinions, assumptions and estimates obtained from third parties (the "Information") has not been verified by CBRE, and CBRE does not represent, warrant or guarantee the accuracy, correctness and completeness of the Information. CBRE does not accept or assume any responsibility or liability, direct or consequential, for the Information or the recipient's reliance upon the Information. The recipient of the Information should take such steps as the recipient may deem necessary to verify the Information prior to placing any reliance upon the Information. The Information may change and any property described in the Information may be withdrawn from the market at any time without notice or obligation to the recipient from CBRE. CBRE and the CBRE logo are the service marks of CBRE Limited and/or its affiliated or related companies in other countries. All other marks displayed on this document are the property of their respective owners. All Rights Reserved.

Mapping Sources: Canadian Mapping Services canadamapping@cbre.com; DMTI Spatial, Environics Analytics, Microsoft Bing, Google Earth.

