

818 Douglas Street

VICTORIA, BC

Centrally Located Downtown Office Space



Opportunity

CBRE Limited is pleased to present the opportunity to lease one office unit in Downtown Victoria. 818 Douglas has a total of 2,794 sq. ft. on the third floor. Located near the Central Business District, this listing is conveniently located near Victoria City Hall, Victoria Conference Centre, and the Legislative Assembly of BC. The tenant will also benefit from the surrounding businesses, such as, Noodle Box, Browns Social House, and HSBC Bank.



Location

Situated on Douglas Street, just a few blocks away from the Inner Harbour, this property in Downtown Victoria is surrounded by a multitude of lifestyle amenities, including the Bay Centre and the Victoria Conference Centre, as well as various shops and restaurants. The location offers convenient access to all modes of transportation and is close in proximity to the Central Business District, Parliament Buildings, and all the attractions that Downtown Victoria has to offer. With its excellent walking, biking, and transit scores, this property is an ideal choice for a wide range of businesses.

Features



Convenient Downtown Location



Surrounded by Several Businesses & Restaurants



Steps Away From Victoria's Harbour





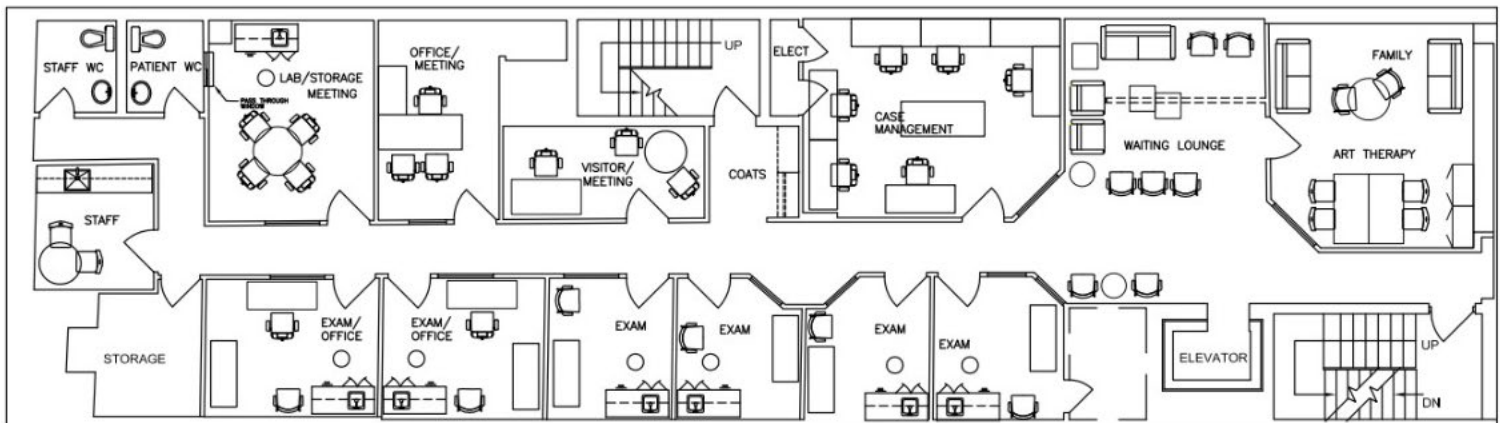
Second Floor

- + 1 Waiting Room
- + 4 Private Rooms
- + 1 Board Room
- + 3 Washrooms
- + 1 Staff Room
- + 1 Staff Room



Third Floor

- + 1 Waiting Room
- + 6 Exam Rooms
- + 5 Meeting/Office Rooms
- + 2 Washrooms



Details

Size
2,794 SF (3rd Floor)

Lease Rate
\$ 18.00

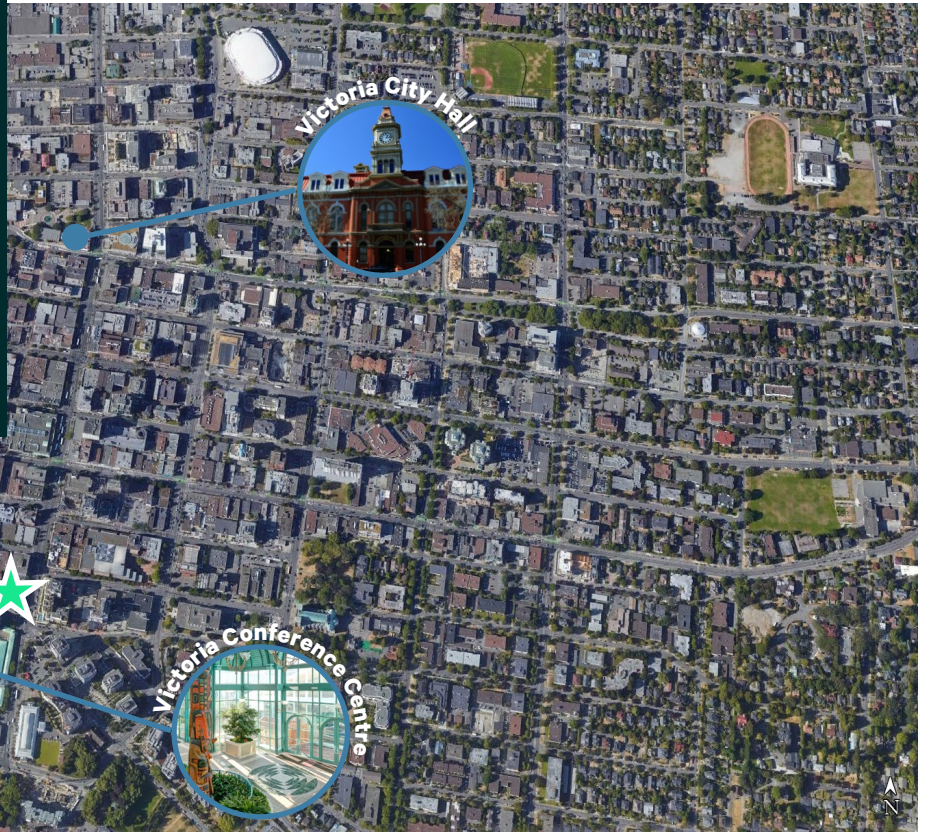
Available
September 1, 2023

Additional Rent
\$ 14.24

Zoning
Old Town District-1 (OTD-1)

Neighbourhood Tenants

- + Victoria City Hall
- + Legislative Assembly of BC
- + Victoria Conference Centre
- + HSBC Bank
- + Noodle Box
- + Browns Social House
- + Empress Hotel



Contact Us

Jeff Lougheed
Vice President
250 386 0001
jeff.lougheed@cbre.com

Andrea Teahen
Senior Associate
250 813 3377
andrea.teahen@cbre.com

CBRE Limited | www.cbrevictoria.com

110-800 Yates Street, Victoria BC, V8W 1L8 | 250 386 0000

CBRE

© 2021 CBRE, Inc. All rights reserved. This information has been obtained from sources believed reliable, but has not been verified for accuracy or completeness. You should conduct a careful, independent investigation of the property and verify all information. Any reliance on this information is solely at your own risk. CBRE and the CBRE logo are service marks of CBRE, Inc. All other marks displayed on this document are the property of their respective owners, and the use of such logos does not imply any affiliation with or endorsement of CBRE. Photos herein are the property of their respective owners. Use of these images without the express written consent of the owner is prohibited.