

818 Douglas Street

VICTORIA, BC

Centrally Located Downtown Office Space



Opportunity

CBRE Limited is pleased to present the opportunity to lease two office units in Downtown Victoria. 818 Douglas has a total of 5,429 sq. ft., with 2,635 sq. ft. on the second floor and 2,794 sq. ft. on the third floor. Located near the Central Business District, this listing is conveniently located near Victoria City Hall, Victoria Conference Centre, and the Legislative Assembly of BC. The tenant will also benefit from the surrounding businesses, such as, Noodle Box, Browns Social House, and HSBC Bank.



Location

Situated on Douglas Street, just a few blocks away from the Inner Harbour, this property in Downtown Victoria is surrounded by a multitude of lifestyle amenities, including the Bay Centre and the Victoria Conference Centre, as well as various shops and restaurants. The location offers convenient access to all modes of transportation and is close in proximity to the Central Business District, Parliament Buildings, and all the attractions that Downtown Victoria has to offer. With its excellent walking, biking, and transit scores, this property is an ideal choice for a wide range of businesses.

Features



Convenient Downtown Location



Surrounded by Several Businesses & Restaurants



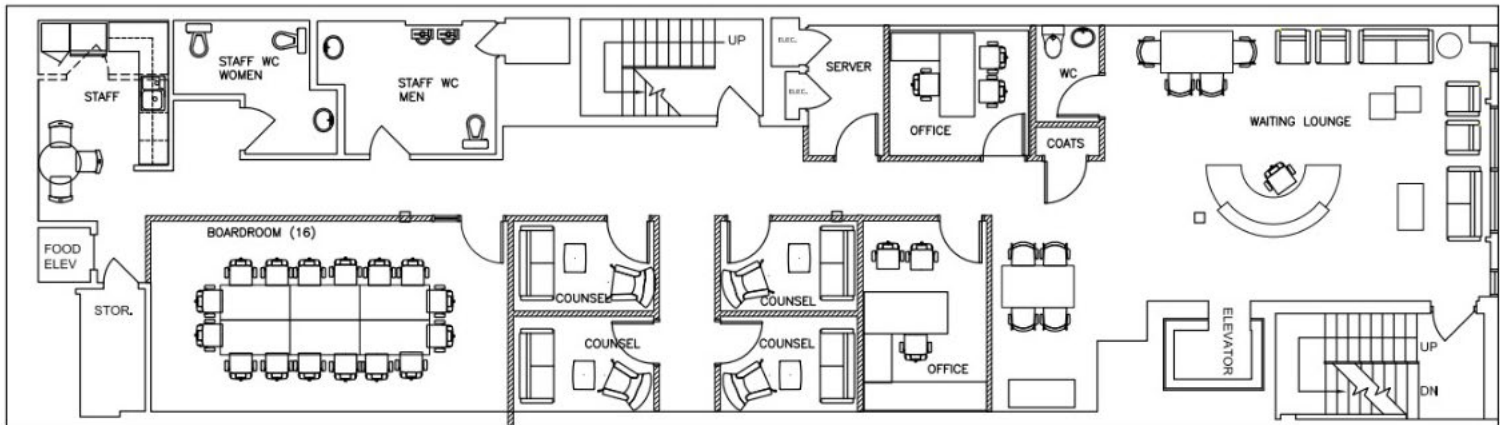
Steps Away From Victoria's Harbour





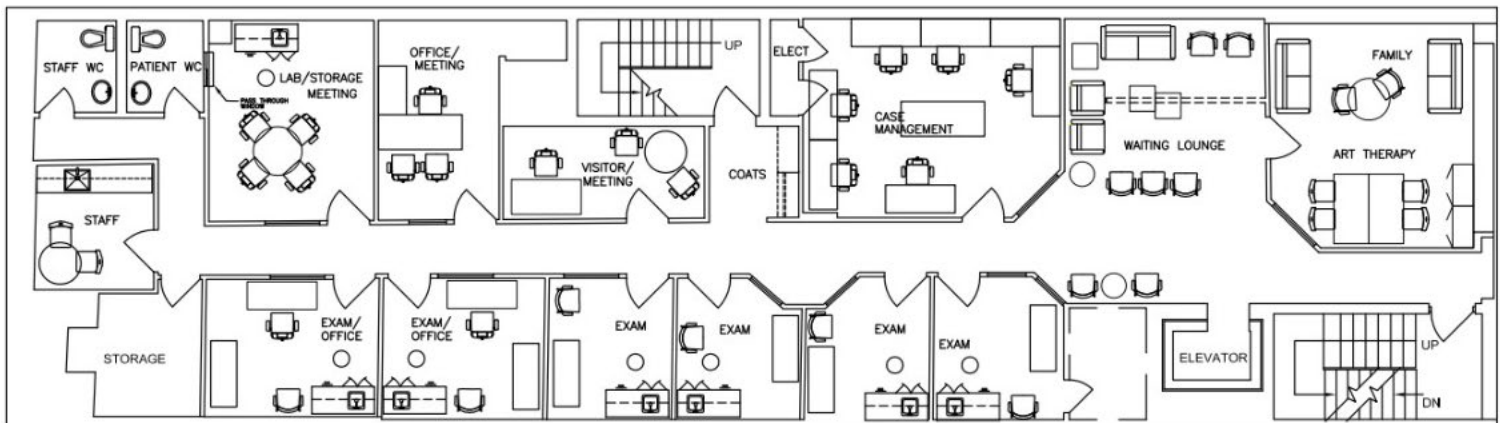
Second Floor

- + 1 Waiting Room
- + 4 Private Rooms
- + 2 Private Offices
- + 1 Board Room
- + 3 Washrooms
- + 1 Staff Room



Third Floor

- + 1 Waiting Room
- + 6 Exam Rooms
- + 5 Meeting/Office Rooms
- + 2 Washrooms



Details

Size

2,635 SF (2nd Floor)
2,794 SF (3rd Floor)

5,429 SF combined

Available

September 1, 2023

Lease Rate

\$ 18.00

Additional Rent

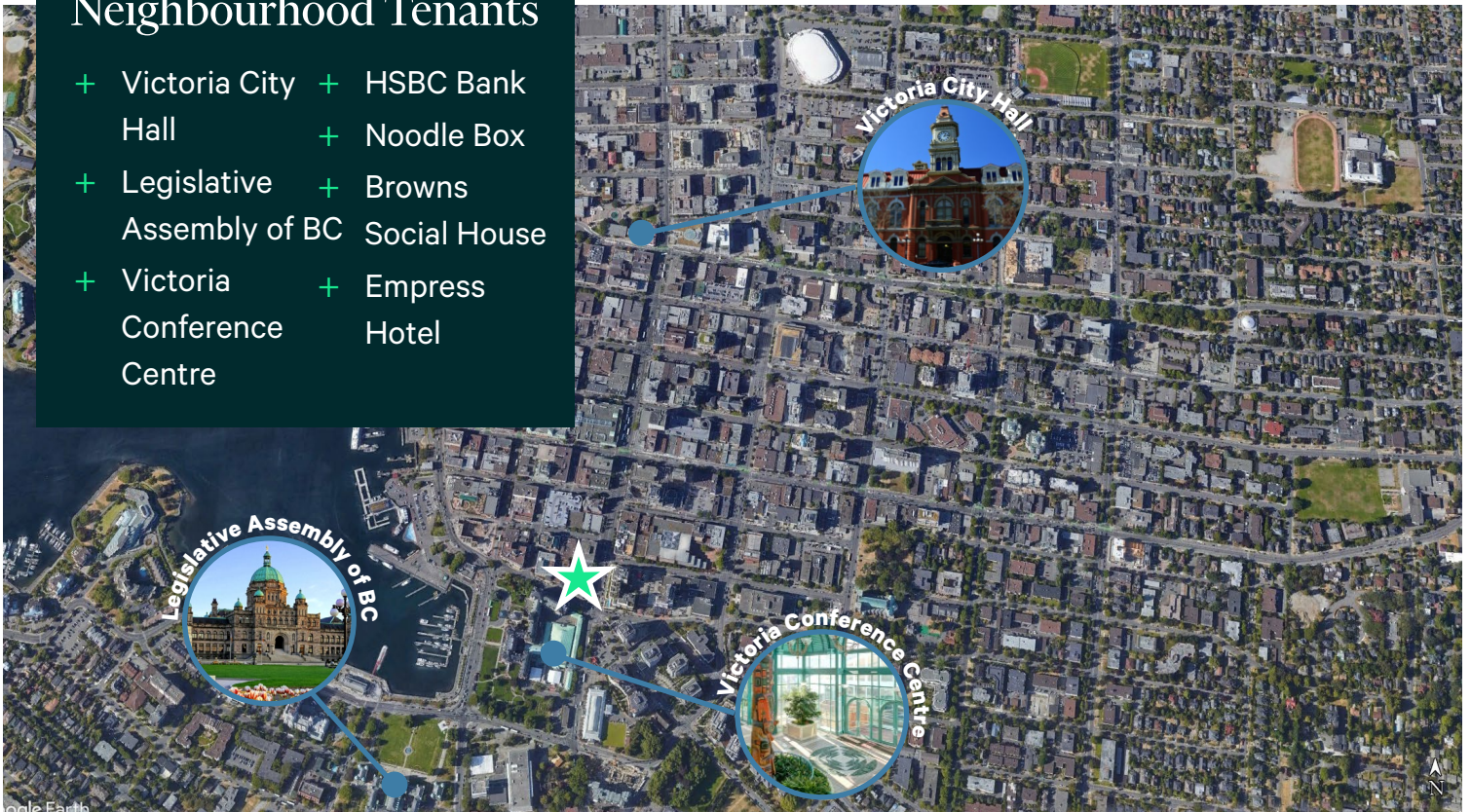
\$ 14.24

Zoning

Old Town District-1 (OTD-1)

Neighbourhood Tenants

- + Victoria City Hall
- + HSBC Bank
- + Legislative Assembly of BC
- + Noodle Box
- + Browns Social House
- + Victoria Conference Centre
- + Empress Hotel



Contact Us

Jeff Lougheed

Vice President

250 888 9302

jeff.lougheed@cbre.com

Andrea Teahen

Senior Associate

250 813 3377

andrea.teahen@cbre.com

CBRE Limited | www.cbrevictoria.com

1026 Fort Street, Victoria BC, V8V 3K4 | 250 386 0000

CBRE

© 2021 CBRE, Inc. All rights reserved. This information has been obtained from sources believed reliable, but has not been verified for accuracy or completeness. You should conduct a careful, independent investigation of the property and verify all information. Any reliance on this information is solely at your own risk. CBRE and the CBRE logo are service marks of CBRE, Inc. All other marks displayed on this document are the property of their respective owners, and the use of such logos does not imply any affiliation with or endorsement of CBRE. Photos herein are the property of their respective owners. Use of these images without the express written consent of the owner is prohibited.