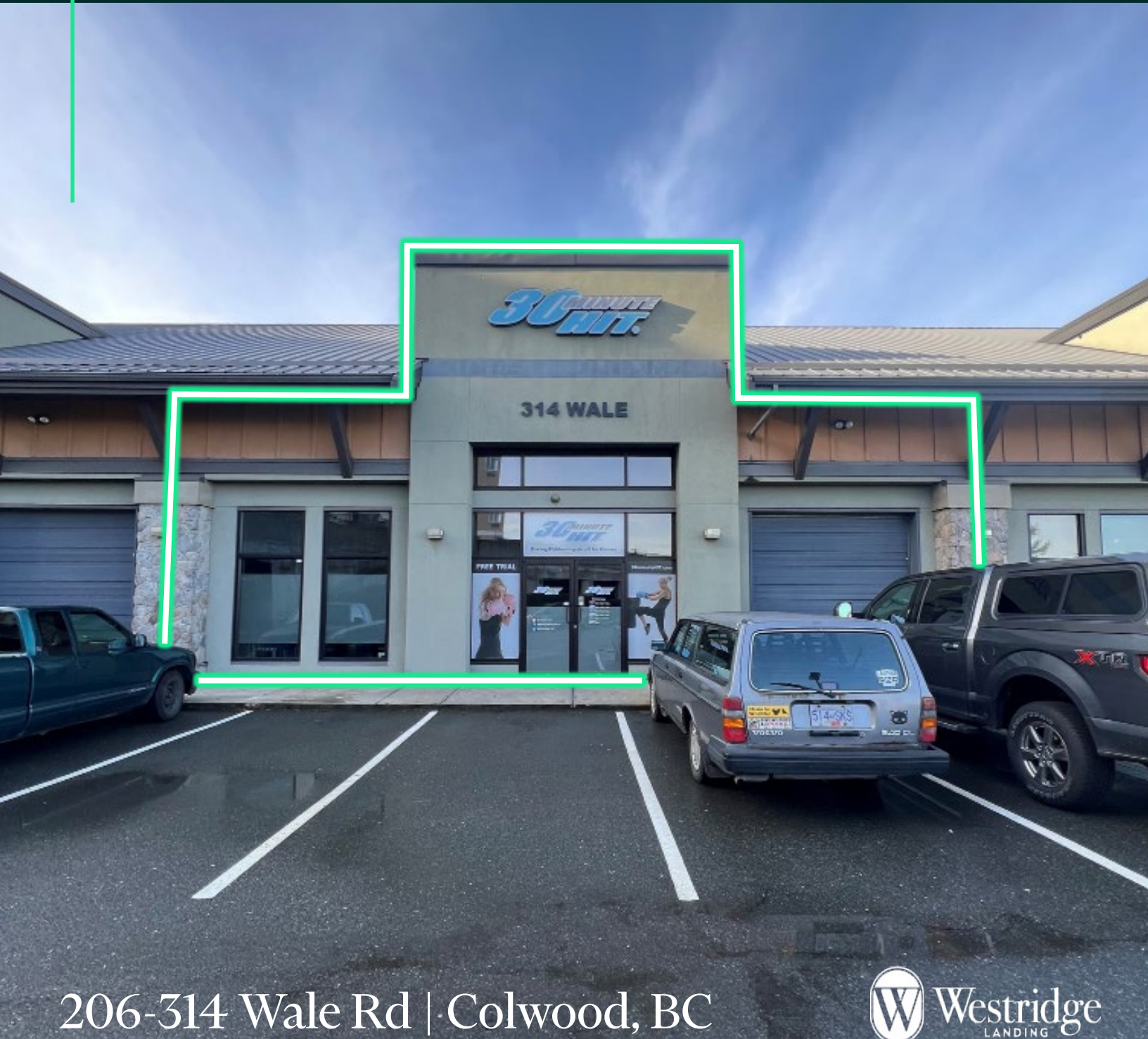


For Lease

CBRE

2,237 SF Flex Commercial Space with Grade Level Loading Bay

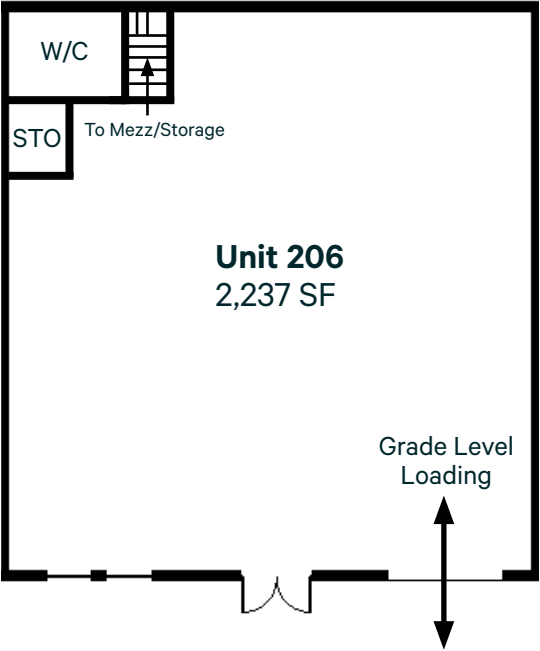


The Opportunity

CBRE is pleased to present a ground-floor retail / industrial unit located in Westridge Landing. The center is located in a rapidly developing area of Colwood. This 2,237 sq.ft unit features an open floor plan, 16’ ceiling heights, a grade-level loading door and is improved with a washroom and mezzanine storage area. Anchored by Lee Valley tools and the Holiday Inn, the complex has additional amenities including 328 Taphouse, Victoria Barbell, and the Legacy rental apartments (63 residential units).

Unit Details

| | |
|----------------------|---|
| Address | 206-314 Wale Rd Colwood, BC |
| Size: | 2,237 SF |
| Lease Rate: | \$24.00 PSF |
| Adtl. Rent: | \$9.50 PSF |
| Availability: | Immediately |
| Tenant Improvements: | Negotiable |
| Zoning: | CS1 - Service Commercial |
| Uses Permitted: | Animal Hospital, Auto Repair, Car Wash, Nurseries/Greenhouses, Gas Service Station, Offices, Storage, Restaurants, Retail, Personal Service |
| (But Not Limited to) | |



Unit Highlights

- 16’ Ceiling Heights
- Grade Level Loading Bay with Roll-Up Door
- Abundance of On-Site Parking for Staff & Customers
- Prominent Signage Opportunity
- Opportunity to Service Rapidly Growing Resident Base
- Open Floor Plan Layout
- Plaza Anchored by Lee Valley Tools
- Abundance of Light with Large Storefront Windows



The Development



Located in the heart of Colwood, BC, Westridge Landing is a 3.8 acre mixed-use property featuring convenience and central location for both commercial and residential clients. Having begun with an impressive commercial space anchored by Holiday Inn and Lee Valley Tools, Westridge now includes 63 rental apartments.



Flex Commercial Space with Grade Level Loading Bay
206-314 Wale Rd | Colwood, BC



Flex Commercial Space with Grade Level Loading Bay
206-314 Wale Rd | Colwood, BC



Colwood

Colwood is a vibrant and growing community located on the west shore of Victoria, British Columbia. With its stunning natural beauty, rich history, and excellent amenities, Colwood is a sought-after destination for both residents and visitors alike. The Subject Property is located along Colwoods major commercial strip, alongside numerous successful businesses, and offers significant traffic counts and drive by exposure.

2
Minute Drive
to Downtown
Colwood

7
Minute Drive
to Downtown
Langford

20
Minute Drive
to Downtown
Victoria



2,237 SF Flex Commercial Space with Grade Level Loading Bay

Contact Us

Jeff Lougheed
Vice President
250 882 9903
jeff.lougheed@cbre.com

Ross Marshall
Personal Real Estate Corporation
Senior Vice President
250 386 0004
ross.marshall@cbre.com

Cooper Anderson
Associate
250 386 0276
cooper.anderson@cbre.com



CBRE

www.cbrevictoria.com | www.cbre.ca

This disclaimer shall apply to CBRE Limited, Real Estate Brokerage, and to all other divisions of the Corporation; to include all employees and independent contractors ("CBRE"). All references to CBRE Limited herein shall be deemed to include CBRE, Inc. The information set out herein, including, without limitation, any projections, images, opinions, assumptions and estimates obtained from third parties (the "Information") has not been verified by CBRE, and CBRE does not represent, warrant or guarantee the accuracy, correctness and completeness of the Information. CBRE does not accept or assume any responsibility or liability, direct or consequential, for the Information or the recipient's reliance upon the Information. The recipient of the Information should take such steps as the recipient may deem necessary to verify the Information prior to placing any reliance upon the Information. The Information may change and any property described in the Information may be withdrawn from the market at any time without notice or obligation to the recipient from CBRE. CBRE and the CBRE logo are the service marks of CBRE Limited and/or its affiliated or related companies in other countries. All other marks displayed on this document are the property of their respective owners. All Rights Reserved.