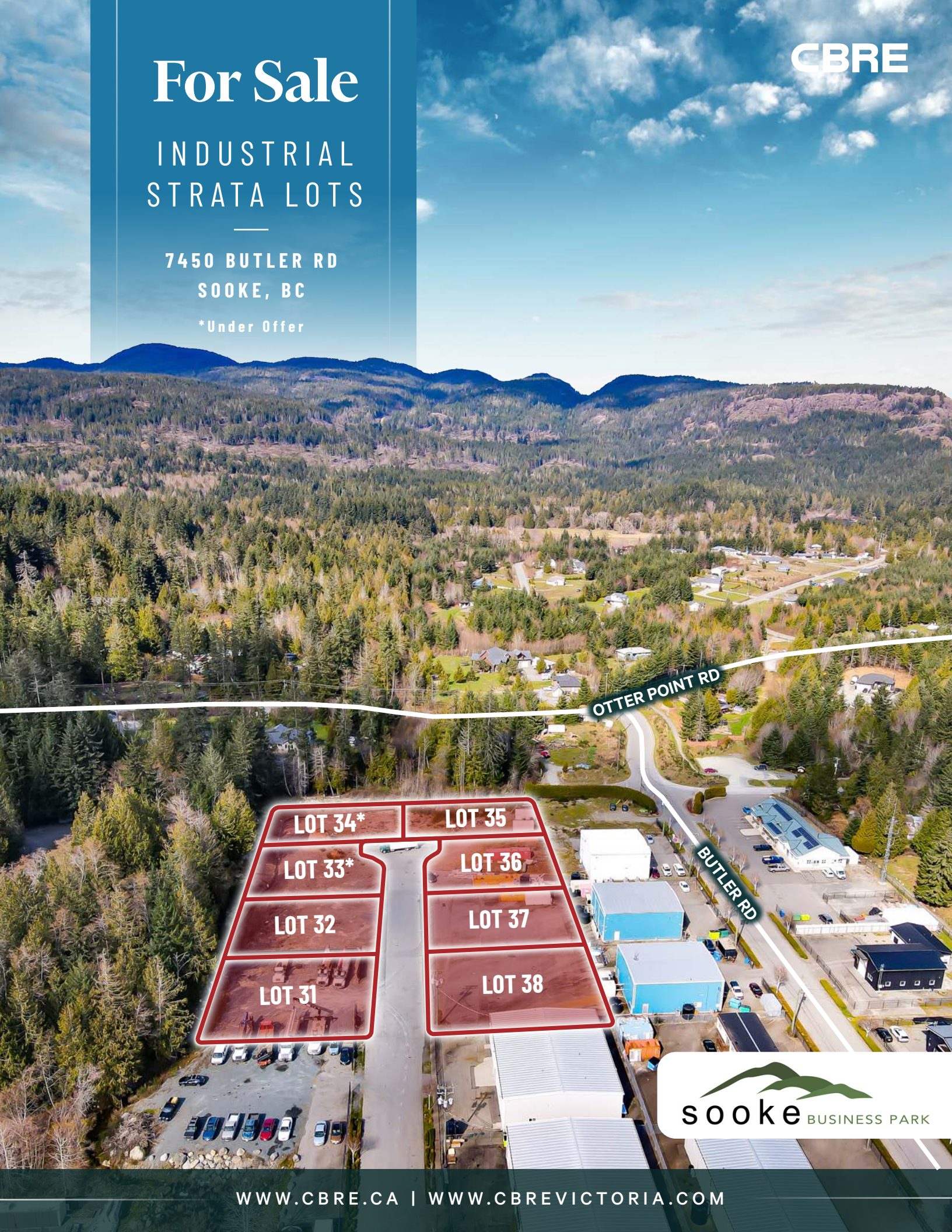


For Sale

INDUSTRIAL STRATA LOTS

7450 BUTLER RD
SOOKE, BC

*Under Offer



OTTER POINT RD

BUTLER RD



THE OPPORTUNITY

The CBRE Victoria Investment Properties Group is pleased to present the opportunity to purchase industrial strata lots in the Sooke Business Park located at 7450 Butler Road. The lots, which range in size from 11,302 SF up to 95,579, are flat and ready to build on. The property has excellent general industrial zoning which allows for a wide range of uses. Excellent vehicular access to Highway 14 allows for convenient servicing of Langford, up-island, and the surrounding Westshore municipalities.

- ✓ Lots ranging from 11,302 SF up to 95,579 SF of contiguous area
- ✓ Lots are level and ready to build on
- ✓ Opportunity to own scarcely available industrial zoned land
- ✓ Ideal for owner-occupiers of light industrial or service commercial space
- ✓ Excellent access to the rapidly expanding West Shore communities of Greater Victoria
- ✓ Hwy 14 improvements underway to reduce commute times

PROPERTY DETAILS

Civic Address	7450 Butler Road Sooke, BC
PID	028-645-103
Legal Address	Lot A Plan VIP89031 Section 16 Land District 42 Except Plan VIS7096 (PHASE 1)
Zoning	M-SBP Sooke Business Park Industrial Zone
Lot Size	11,302 - 95,579 SF
Sewer	Connection to treatment plant

PRICE LIST

LOT	SF	PRICE
31	11,334	\$425,000
32	11,367	\$399,000
33	11,367	UNDER OFFER
34	13,835	UNDER OFFER
35	13,770	\$450,000
36**	11,302	\$425,000
37*	11,302	\$450,000
38*	11,302	\$450,000

*Paved Lots **Partially Paved





ZONING

M-SBP Sooke Business Park Industrial Zone

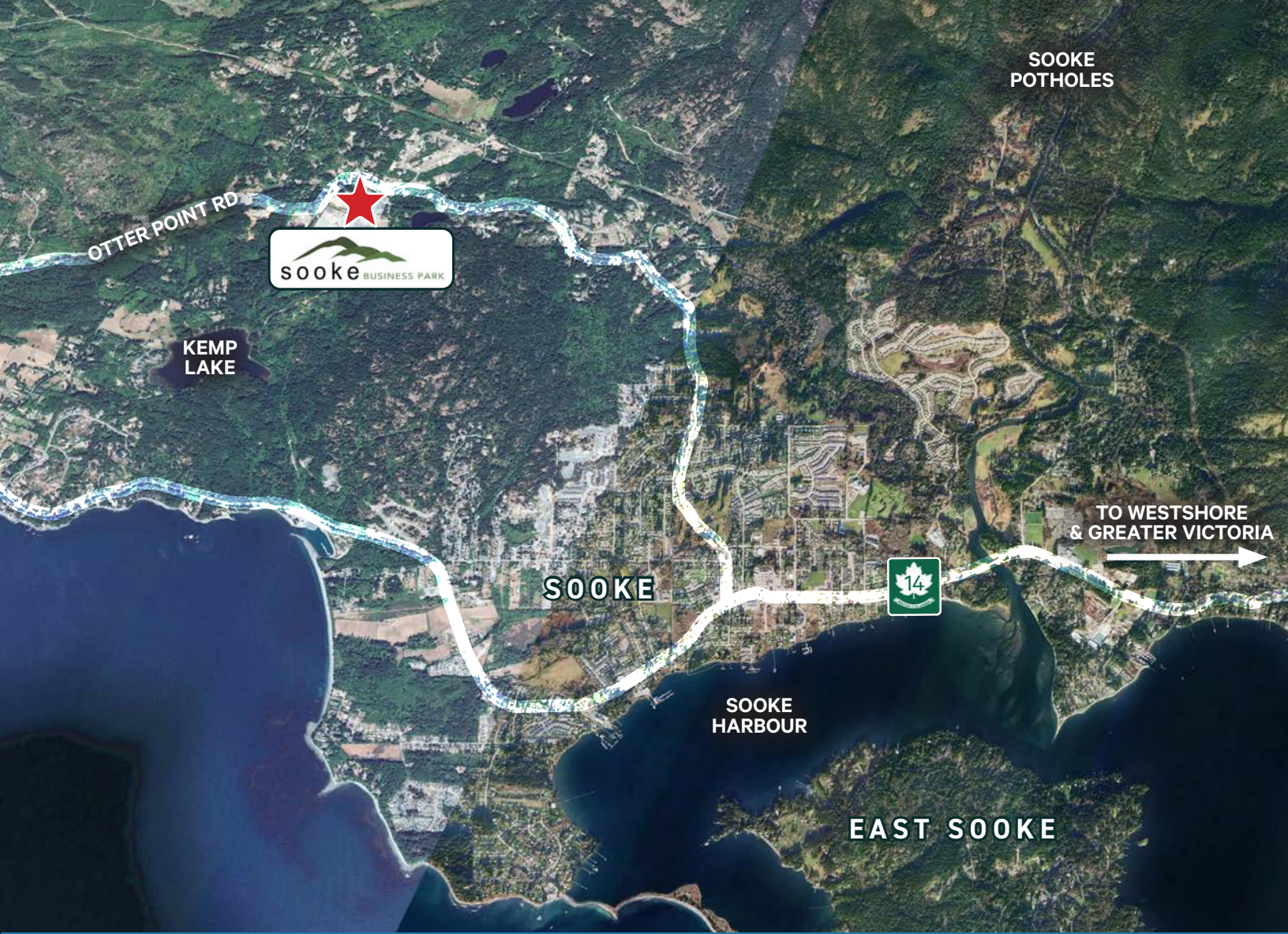
Uses permitted but not limited to:

- ✓ General Industrial Uses
- ✓ Athletic facilities
- ✓ Vehicle sales/rentals
- ✓ Auction rooms and places
- ✓ Unenclosed storage
- ✓ Retail building/landscape supplies
- ✓ Accessory retail sales
- ✓ One dwelling unit for the use of a caretaker accessory to principal use
- ✓ Intensive agriculture -
Medical Marijuana Production



BUILD EXAMPLES





Northwest of Victoria, along the southwestern coast of Vancouver Island, lies the communities of Sooke. Linked by Highway 14, this growing community is known for its rugged coastlines, tall trees and unspoiled natural beauty. The town of Sooke is located just 40 minutes outside of Victoria and is even accessible by bike along the Galloping Goose Regional Trail. From local artisans, cafes and extensive parks and hiking trails, Sooke is a popular seaside getaway with developing industry.

Industrial Strata Lots | Sooke Business Park

EXCLUSIVE ADVISORS:

Chris Rust

Personal Real Estate Corporation
Senior Vice President
250 386 0005
chris.rust@cbre.com

Ross Marshall

Personal Real Estate Corporation
Senior Vice President
250 386 0004
ross.marshall@cbre.com



INVESTMENT PROPERTIES GROUP
V I C T O R I A

SPECIALIZING IN INVESTMENT & DEVELOPMENT PROPERTY

CBRE LIMITED 110-800 YATES STREET | VICTORIA, BC V8W 1L8 | WWW.CBREVICTORIA.COM

www.cbre.ca
www.cbrevictoria.com

This disclaimer shall apply to CBRE Limited, Real Estate Brokerage, and to all other divisions of the Corporation; to include all employees and independent contractors ("CBRE"). The information set out herein, including, without limitation, any projections, images, opinions, assumptions and estimates obtained from third parties (the "Information") has not been verified by CBRE, and CBRE does not represent, warrant or guarantee the accuracy, correctness and completeness of the Information. CBRE does not accept or assume any responsibility or liability, direct or consequential, for the Information or the recipient's reliance upon the Information. The recipient of the Information should take such steps as the recipient may deem necessary to verify the Information prior to placing any reliance upon the Information. The Information may change and any property described in the Information may be withdrawn from the market at any time without notice or obligation to the recipient from CBRE. CBRE and the CBRE logo are the service marks of CBRE Limited and/or its affiliated or related companies in other countries. All other marks displayed on this document are the property of their respective owners. All Rights Reserved. Mapping Sources: Canadian Mapping Services canadamapping@cbre.com; DMTI Spatial, Environics Analytics, Microsoft Bing, Google Earth.