

FOR  
LEASE

## RETAIL/OFFICE SPACE AT HARRIS GREEN VILLAGE

### 922 VIEW STREET

VICTORIA, BC



Lease street-level retail/office space in Downtown Victoria. The subject space is part of Harris Green Village, which is home to a wide variety of retail, office, service, and food/beverage businesses. Nearby amenities include Bing 4 Burger Lounge, The Market on Yates, London Drugs, COBS Bread, Yates Espresso Bar, Pizza Hut, Harris Green Liquor Express, Bosley's, and more.

FOR MORE INFORMATION, CONTACT:

**NATHANIEL SIMPSON**

SALES ASSOCIATE

BROKERAGE SERVICES

**250 386 0001**

[nathaniel.simpson@cbre.com](mailto:nathaniel.simpson@cbre.com)

**JAMES MURRAY**

SALES REPRESENTATIVE

BROKERAGE SERVICES

**250 385 1225**

[james.murray@cbre.com](mailto:james.murray@cbre.com)

**CBRE**



FOR  
LEASE

# RETAIL/OFFICE SPACE AT HARRIS GREEN VILLAGE

## 922 VIEW STREET

VICTORIA, BC



**SIZE:**

1,632 SF



**NET RENT:**

\$19.00 PSF



**ADDITIONAL RENT:**

\$10.55 PSF  
(2021 estimate)

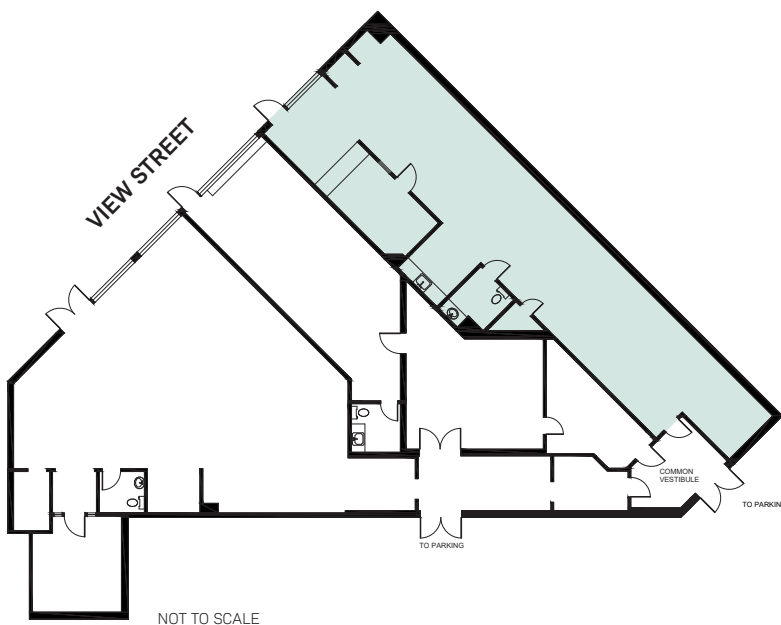


**AVAILABLE:**

June 1, 2021

## HIGHLIGHTS

- ✓ EASY ACCESS OFF VIEW ST
- ✓ RETAIL FRONTAGE
- ✓ PRIVATE WASHROOM
- ✓ KITCHENETTE WITHIN PREMISES
- ✓ PROXIMITY TO NUMEROUS SUCCESSFUL BUSINESSES
- ✓ SIGNAGE OPPORTUNITIES



**NATHANIEL SIMPSON**  
**250 386 0001**  
[nathaniel.simpson@cbre.com](mailto:nathaniel.simpson@cbre.com)

**JAMES MURRAY**  
**250 385 1225**  
[james.murray@cbre.com](mailto:james.murray@cbre.com)

CBRE LIMITED | 1026 Fort Street | Victoria, BC V8V 3K4 | [www.cbrevictoria.com](http://www.cbrevictoria.com)

This disclaimer shall apply to CBRE Limited, Real Estate Brokerage, and to all other divisions of the Corporation; to include all employees and independent contractors ("CBRE"). The information set out herein, including, without limitation, any projections, images, opinions, assumptions and estimates obtained from third parties (the "Information") has not been verified by CBRE, and CBRE does not represent, warrant or guarantee the accuracy, correctness and completeness of the Information. CBRE does not accept or assume any responsibility or liability, direct or consequential, for the Information or the recipient's reliance upon the Information. The recipient of the Information should take such steps as the recipient may deem necessary to verify the Information prior to placing any reliance upon the Information. The Information may change and any property described in the Information may be withdrawn from the market at any time without notice or obligation to the recipient from CBRE. CBRE and the CBRE logo are the service marks of CBRE Limited and/or its affiliated or related companies in other countries. All other marks displayed on this document are the property of their respective owners. All Rights Reserved. Mapping Sources: Canadian Mapping Services [canadamapping@cbre.com](mailto:canadamapping@cbre.com); DMTI Spatial, Environics Analytics, Microsoft Bing, Google Earth.

**CBRE**