

FOR SALE

Luxurious Oceanfront Office/Retail Strata Unit



The Opportunity

The Investment Properties Group is pleased to present the opportunity to purchase a strata retail/office unit located at the Sooke Harbour, steps to Downtown Sooke. Constructed with only the finest material, this premium real estate investment is scheduled for completion July 2021. Enjoy a work life balance by positioning your business in this active waterfront community.



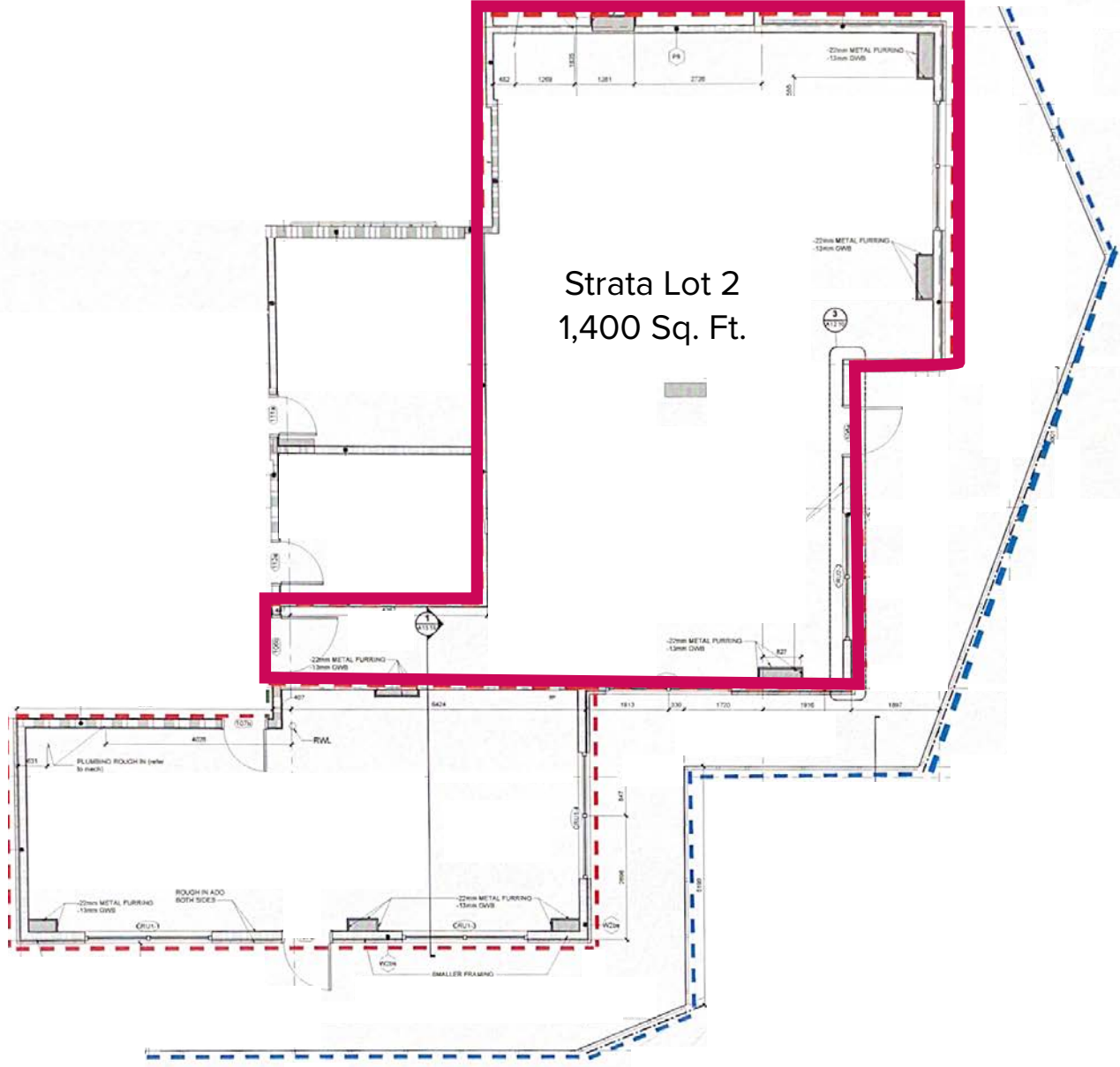
The Details

Civic Address	2-1820 Maple Avenue South Sooke, BC
PID	030-726-808
Legal Address	Strata Lot 1 & 2 - Lot A Plan EPP
Zoning	C2 General Commercial
Year Built	2021
On-site Parking	Strata Lot 2: 5 Stalls
Heating	HVAC
Electrical	200 Amp Panel
Unit Size (Approx.)	1,400 Sq. Ft.
Strata Fees	\$400/month
PRICE	\$700,000

Enjoy stunning harbour views through soaring windows and large glass-wrapped patios upfront...



Floor Plans



Locate your business within a protected harbour in a bustling and fast-growing Vancouver Island community





**25 Minutes to
Downtown Langford**
**40 Minutes to
Victoria**



The Location

Situated 70 feet from the sparkling waters of the Sooke Harbour, this property offers unobstructed views of the Salish Sea. Only steps to numerous amenities including grocery, local restaurants, breweries, pharmacy, boutique shops and more. The property is approximately 23 minutes to Downtown Langford and 48 minutes to Downtown Victoria. Sooke is known for its numerous outdoor activities with several hiking and biking trails, kayaking and boating through Sooke Harbour and Sooke Basin and weekly farmers markets.

Contact Us

Ross Marshall
Personal Real Estate Corporation
Senior Vice President
Brokerage Services
250 386 0004
ross.marshall@cbre.com

Chris Rust
Personal Real Estate Corporation
Senior Vice President
Brokerage Services
250 386 0005
chris.rust@cbre.com

www.cbrevictoria.com | CBRE Limited
1026 Fort Street, Victoria, BC V8V 3K4 | 250 386 0000

INVESTMENT PROPERTIES GROUP
V I C T O R I A

This disclaimer shall apply to CBRE Limited, Real Estate Brokerage, and to all other divisions of the Corporation, to include all employees and independent contractors ("CBRE"). The information set out herein, including, without limitation, any projections, images, opinions, assumptions and estimates obtained from third parties (the "Information") has not been verified by CBRE, and CBRE does not represent, warrant or guarantee the accuracy, correctness and completeness of the Information. CBRE does not accept or assume any responsibility or liability, direct or consequential, for the information or the recipient's reliance upon the information. The recipient of the information should take such steps as the recipient may deem necessary to verify the information prior to placing any reliance upon the information. The information may change and any property described in the information may be withdrawn from the market at any time without notice or obligation to the recipient from CBRE. CBRE and the CBRE logo are the service marks of CBRE Limited and/or its affiliated or related companies in other countries. All other marks displayed on this document are the property of their respective owners. All Rights Reserved. Mapping Sources: Canadian Mapping Services canadamapping@cbre.com; DMTI Spatial, Environics Analytics, Microsoft Bing, Google Earth.

