

FOR LEASE

SUITE 108 - 118
733 JOHNSON ST

Victoria, BC



**AFFORDABLE LOWER-LEVEL SPACE
IN DOWNTOWN CORE**

HIGHLIGHTS

- \ FLEXIBLE SQUARE FOOTAGE TO SUIT TENANT REQUIREMENTS
- \ ACCESS TO COMMON WHEELCHAIR ACCESSIBLE WASHROOMS
- \ PROXIMITY TO NUMEROUS FOOD/BEVERAGE AND RETAIL OPTIONS
- \ TENANT IMPROVEMENT PACKAGE NEGOTIABLE

CONTACT

NATHANIEL SIMPSON

Sales Associate
Brokerage Services
250 386 0001
nathaniel.simpson@cbre.com

JAMES MURRAY

Sales Representative
Brokerage Services
250 385 1225
james.murray@cbre.com

CBRE

FOR LEASE

SUITE 108 - 118, 733 JOHNSON ST

VICTORIA, BC

THE OPPORTUNITY

Opportunity to lease affordable lower-level commercial space at Maynard Court, a beautifully maintained heritage building in Victoria's Downtown Core. The subject spaces are well suited to a variety of uses including artist and maker studios. Nearby businesses include Shine Café, Superbaba, Zambri's, Habit Coffee, Brickyard Pizza, Yates Street Taphouse, Fol Epi, Agrius, and more!

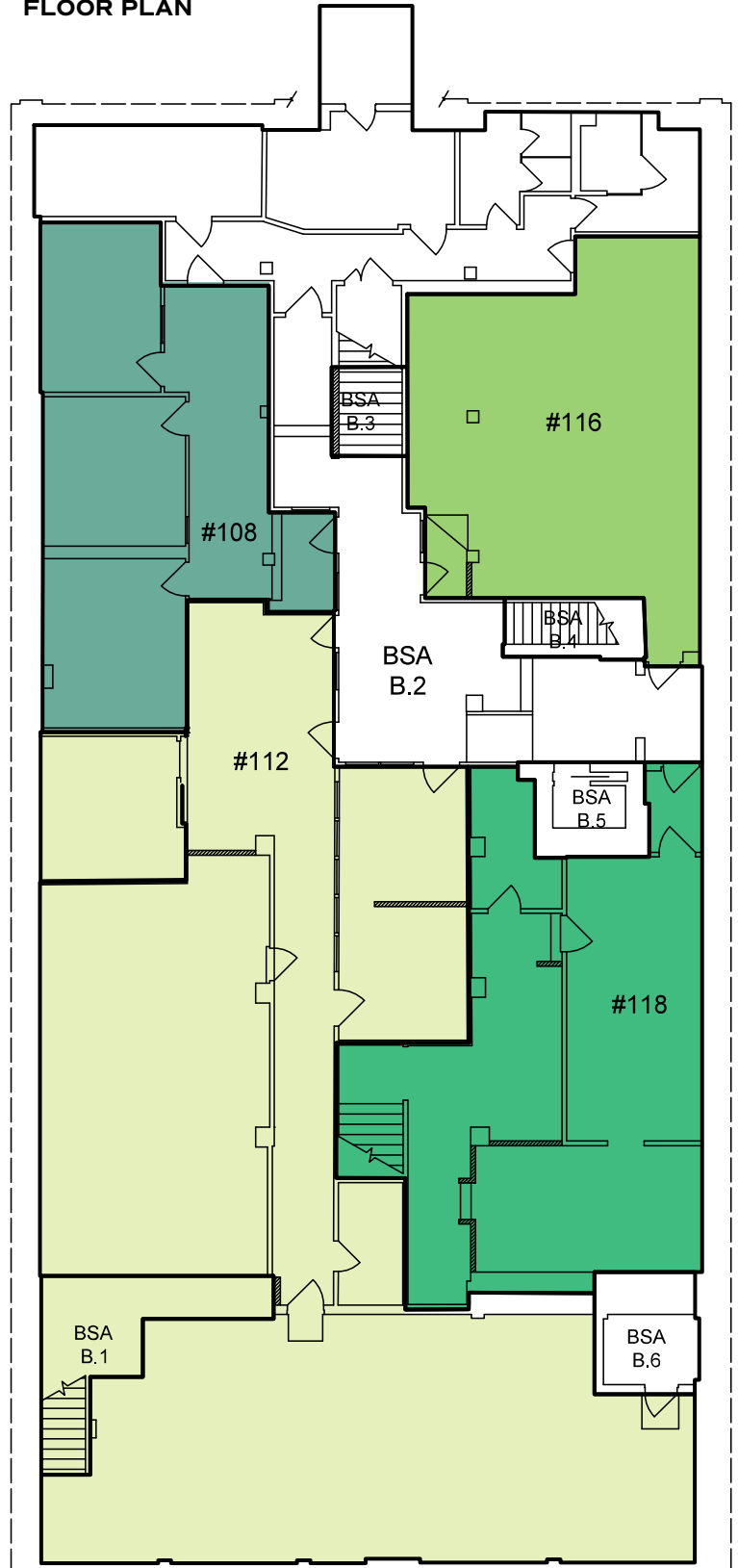
UNIT	SIZE	MONTHLY ESTIMATE
#108	673 SF	\$841
#112*	2,724 SF	\$3,405
#116	501 SF	\$626
#118	714 SF	\$893

*Can be demised.

AVAILABILITY March 1, 2021



FLOOR PLAN



NOT TO SCALE.

SPACE CURRENTLY UNDER CONSTRUCTION. CONFIGURATION NOT FINAL.

FOR LEASE

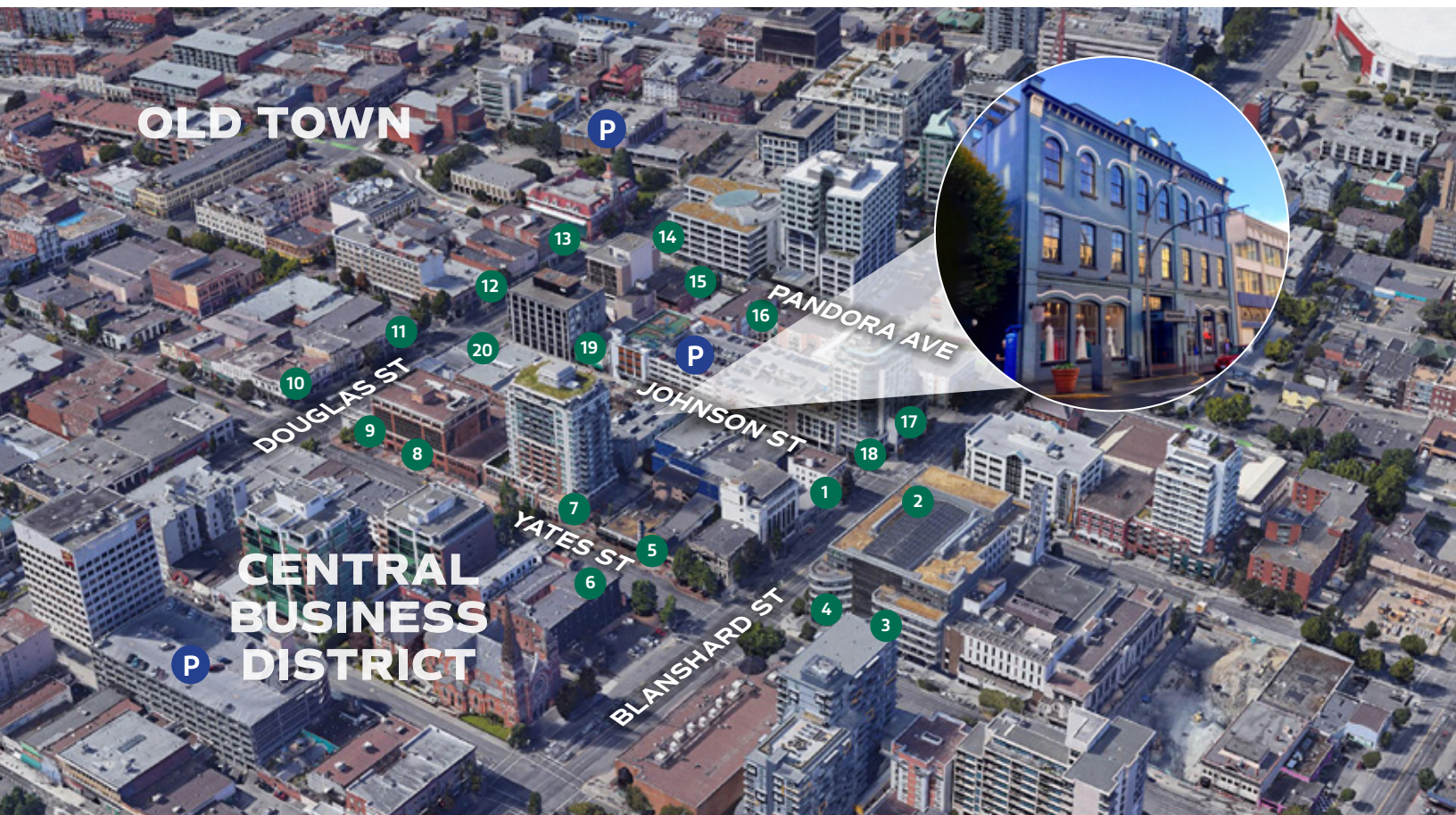
SUITE 108 - 118, 733 JOHNSON ST

VICTORIA, BC

**AFFORDABLE
LOWER-LEVEL SPACE IN
DOWNTOWN CORE**

AMENITIES NEARBY

- | | | | |
|-------------------|-------------------------|-----------------|------------------------|
| 1 Shine Café | 6 Yates Street Taphouse | 11 Subway | 16 Nubo Japanese Tapas |
| 2 Superbaba | 7 Fol Epi & Agrius | 12 The Mint | 17 Tim Hortons |
| 3 Zambri's | 8 Bulk Barn | 13 The Palms | 18 Macchiato |
| 4 Habit Coffee | 9 Scotiabank | 14 Sherwood | 19 Tomley's Market |
| 5 Brickyard Pizza | 10 Circle K | 15 John's Place | 20 7-Eleven |



CBRE Limited
1026 Fort Street | Victoria, BC V8V 3K4 | www.cbrevictoria.com

This disclaimer shall apply to CBRE Limited, Real Estate Brokerage, and to all other divisions of the Corporation; to include all employees and independent contractors ("CBRE"). The information set out herein, including, without limitation, any projections, images, opinions, assumptions and estimates obtained from third parties (the "Information") has not been verified by CBRE, and CBRE does not represent, warrant or guarantee the accuracy, correctness and completeness of the information. CBRE does not accept or assume any responsibility or liability, direct or consequential, for the information or the recipient's reliance upon the information. The recipient of the information should take such steps as the recipient may deem necessary to verify the information prior to placing any reliance upon the information. The information may change and any property described in the information may be withdrawn from the market at any time without notice or obligation to the recipient from CBRE. CBRE and the CBRE logo are the service marks of CBRE Limited and/or its affiliated or related companies in other countries. All other marks displayed on this document are the property of their respective owners. All Rights Reserved. Mapping Sources: Canadian Mapping Services canadamapping@cbre.com; DMTI Spatial, Envirionics Analytics, Microsoft Bing, Google Earth.

NATHANIEL SIMPSON

Sales Associate
Brokerage Services

250 386 0001
nathaniel.simpson@cbre.com

JAMES MURRAY

Sales Representative
Brokerage Services

250 385 1225
james.murray@cbre.com