

FOR SUBLEASE

852

FORT ST  
VICTORIA, BC

IMPROVED OFFICE  
SPACE IN THE JOSEPH  
BUILDING

- MOVE-IN-READY SPACE IN WELL-MAINTAINED BUILDING
- CLOSE TO NUMEROUS AMENITIES
- LARGE WINDOWS WITH AMPLE NATURAL LIGHT
- PARKING AVAILABLE AT MARKET RATES
- SECURE BIKE STORAGE
- ACCESSIBLE WASHROOMS ON EACH FLOOR
- AIR CONDITIONING THROUGHOUT EACH UNIT
- UPGRADED LOBBY AND COMMON AREAS

**JAMES MURRAY**

Sales Representative  
Brokerage Services

250 385 1225  
james.murray@cbre.com

**NATHANIEL SIMPSON**

Sales Associate  
Brokerage Services

250 386 0001  
nathaniel.simpson@cbre.com

**CBRE**

# FOR SUBLEASE

SUITE 217

852 FORT ST

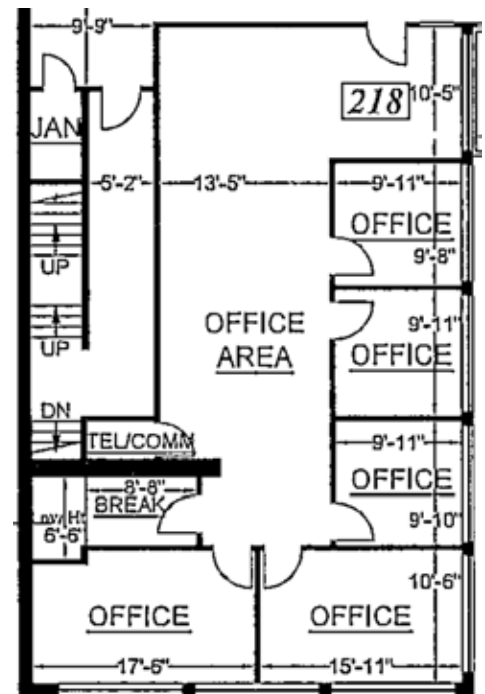
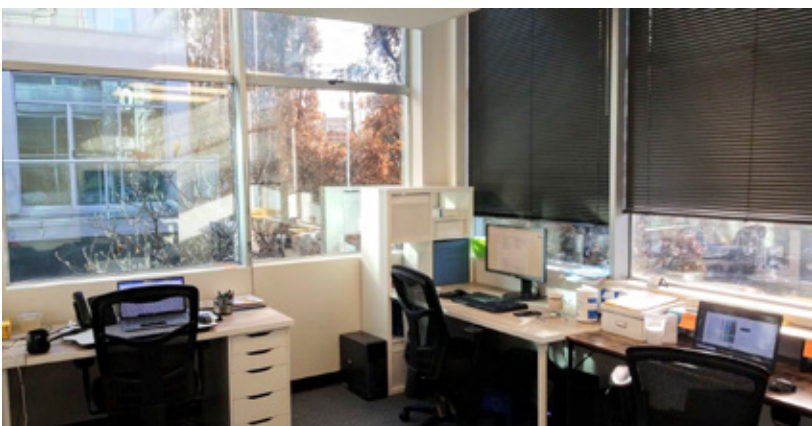
VICTORIA, BC

## IMPROVED OFFICE SPACE IN THE JOSEPH BUILDING

- SIZE:** Suite 218 - 1,439 SF
- NET RENT:** \$19.50 PSF
- ADDITIONAL RENT:** \$12.75 PSF (2021 est.)
- TERM:** Until April 30, 2024
- AVAILABILITY:** With Notice

### THE OPPORTUNITY

Fantastic location in Victoria's downtown core. The subject spaces are improved with a mix of private offices, meeting rooms and open-concept workspaces. Additionally, both units benefit from ample natural light throughout, views of Fort St and the beautiful interior courtyard, and a professional atmosphere.



# CBRE

This disclaimer shall apply to CBRE Limited, Real Estate Brokerage, and to all other divisions of the Corporation; to include all employees and independent contractors ("CBRE"). The information set out herein, including, without limitation, any projections, images, opinions, assumptions and estimates obtained from third parties (the "Information") has not been verified by CBRE, and CBRE does not represent, warrant or guarantee the accuracy, correctness and completeness of the Information. CBRE does not accept or assume any responsibility or liability, direct or consequential, for the Information or the recipient's reliance upon the Information. The recipient of the Information should take such steps as the recipient may deem necessary to verify the Information prior to placing any reliance upon the Information. The Information may change and any property described in the Information may be withdrawn from the market at any time without notice or obligation to the recipient from CBRE. CBRE and the CBRE logo are the service marks of CBRE Limited and/or its affiliated or related companies in other countries. All other marks displayed on this document are the property of their respective owners. All Rights Reserved. Mapping Sources: Canadian Mapping Services [canadamapping@cbre.com](mailto:canadamapping@cbre.com); DMTI Spatial, EnviroNics Analytics, Microsoft Bing, Google Earth.

# FOR SUBLEASE

SUITE 217

**852 FORT ST**

VICTORIA, BC

# IMPROVED OFFICE SPACE IN THE JOSEPH BUILDING

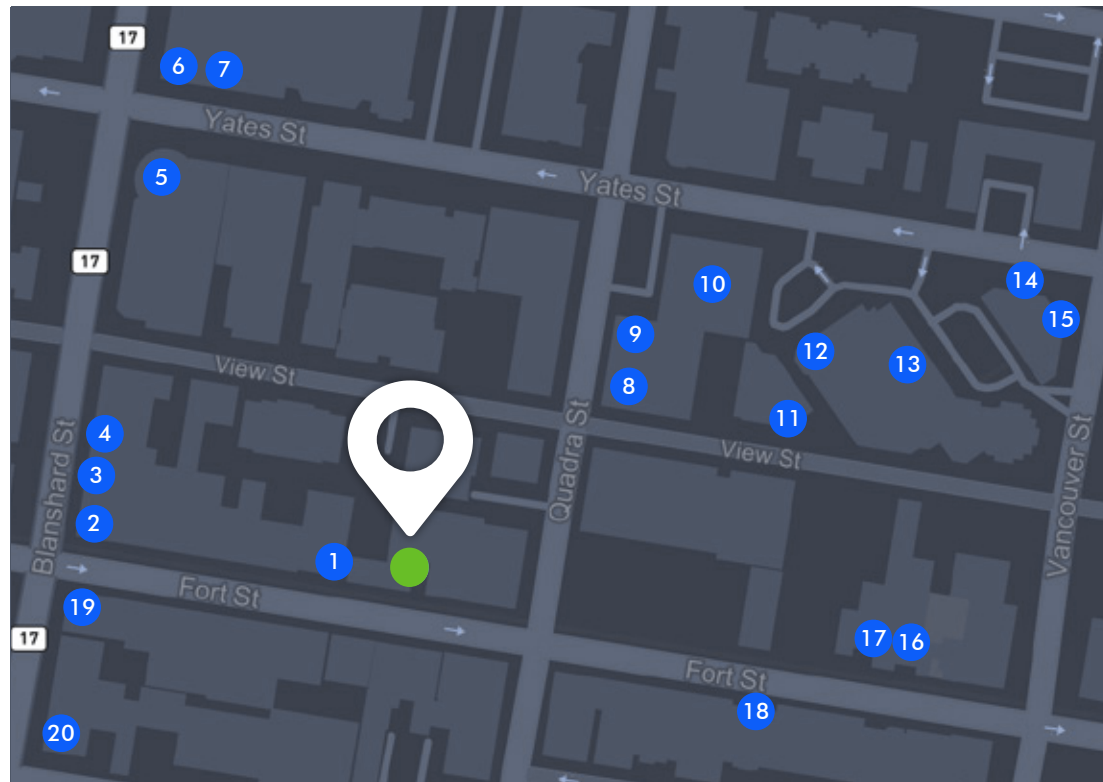
## THE LOCATION

The subject property is located in the Downtown Victoria precinct known as "Fabulous Fort". Situated between Quadra and Blanshard Streets, this desirable location is noted for being surrounded by many boutiques, unique shops, restaurants, cafes and professional offices. It also borders Victoria's Harris Green Village that serves as one of the city's commercial and social hubs. The amenities nearby include the Market on Yates, London Drugs, Bin4 Burger Lounge as well as a variety of other restaurants, cafes and specialty shops.

● Subject

### AMENITIES

- 1 Refuge Taproom
- 2 Subway
- 3 Shiki Sushi
- 4 Baan Thai
- 5 Capitol 6 Theatre
- 6 Habit Coffee
- 7 Zambri's
- 8 Restaurante La Tortilla Mexicana
- 9 Sakura Sushi
- 10 Market on Yates
- 11 Liquor Express
- 12 COBS Bread
- 13 London Drugs
- 14 Dolce Vita Yates Espresso Bar
- 15 Bin 4 Burger Lounge
- 16 Cafe Brio
- 17 Sen Zushi
- 18 Blue Fox Cafe
- 19 Starbucks
- 20 Discovery Coffee



# CBRE

CBRE Limited  
1026 Fort Street | Victoria, BC V8V 3K4 | [www.cbrevictoria.com](http://www.cbrevictoria.com)

This disclaimer shall apply to CBRE Limited, Real Estate Brokerage, and to all other divisions of the Corporation; to include all employees and independent contractors ("CBRE"). The information set out herein, including, without limitation, any projections, images, opinions, assumptions and estimates obtained from third parties (the "Information") has not been verified by CBRE, and CBRE does not represent, warrant or guarantee the accuracy, correctness and completeness of the Information. CBRE does not accept or assume any responsibility or liability, direct or consequential, for the Information or the recipient's reliance upon the Information. The recipient of the Information should take such steps as the recipient may deem necessary to verify the Information prior to placing any reliance upon the Information. The Information may change and any property described in the Information may be withdrawn from the market at any time without notice or obligation to the recipient from CBRE. CBRE and the CBRE logo are the service marks of CBRE Limited and/or its affiliated or related companies in other countries. All other marks displayed on this document are the property of their respective owners. All Rights Reserved. Mapping Sources: Canadian Mapping Services [canadamapping@cbre.com](mailto:canadamapping@cbre.com); DMTI Spatial, Environics Analytics, Microsoft Bing, Google Earth.

**JAMES MURRAY**

Sales Representative  
Brokerage Services

250 385 1225

[james.murray@cbre.com](mailto:james.murray@cbre.com)

**NATHANIEL SIMPSON**

Sales Associate  
Brokerage Services

250 386 0001

[nathaniel.simpson@cbre.com](mailto:nathaniel.simpson@cbre.com)