

FOR
LEASE

SUITE 214 & 218 911 YATES STREET

VICTORIA, BC

TURN-KEY SPACE IN PROFESSIONAL BUILDING



CBRE is pleased to present an opportunity to occupy 1,603 SF and 1,374 SF of second floor office space in the Harris Green Village, just on the periphery of the downtown core. The subject property offers a mix of retail, office and residential. This building benefits from having newly renovated hallways, common areas and entrance lobby. This building is serviced with an elevator, air conditioning and has ample on-site parking for clients and staff.

FOR MORE INFORMATION, CONTACT:

ROSS MARSHALL

Personal Real Estate Corporation

SENIOR VICE PRESIDENT
BROKERAGE SERVICES

250 386 0004

ross.marshall@cbre.com

REID MALTMAN

SALES REPRESENTATIVE
BROKERAGE SERVICES

250 385 1225

reid.maltman@cbre.com

ADRIAN BERUSCHI

Personal Real Estate Corporation

SENIOR VICE PRESIDENT
RETAIL PROPERTIES

604 662 5138

adrian.beruschi@cbre.com

CBRE

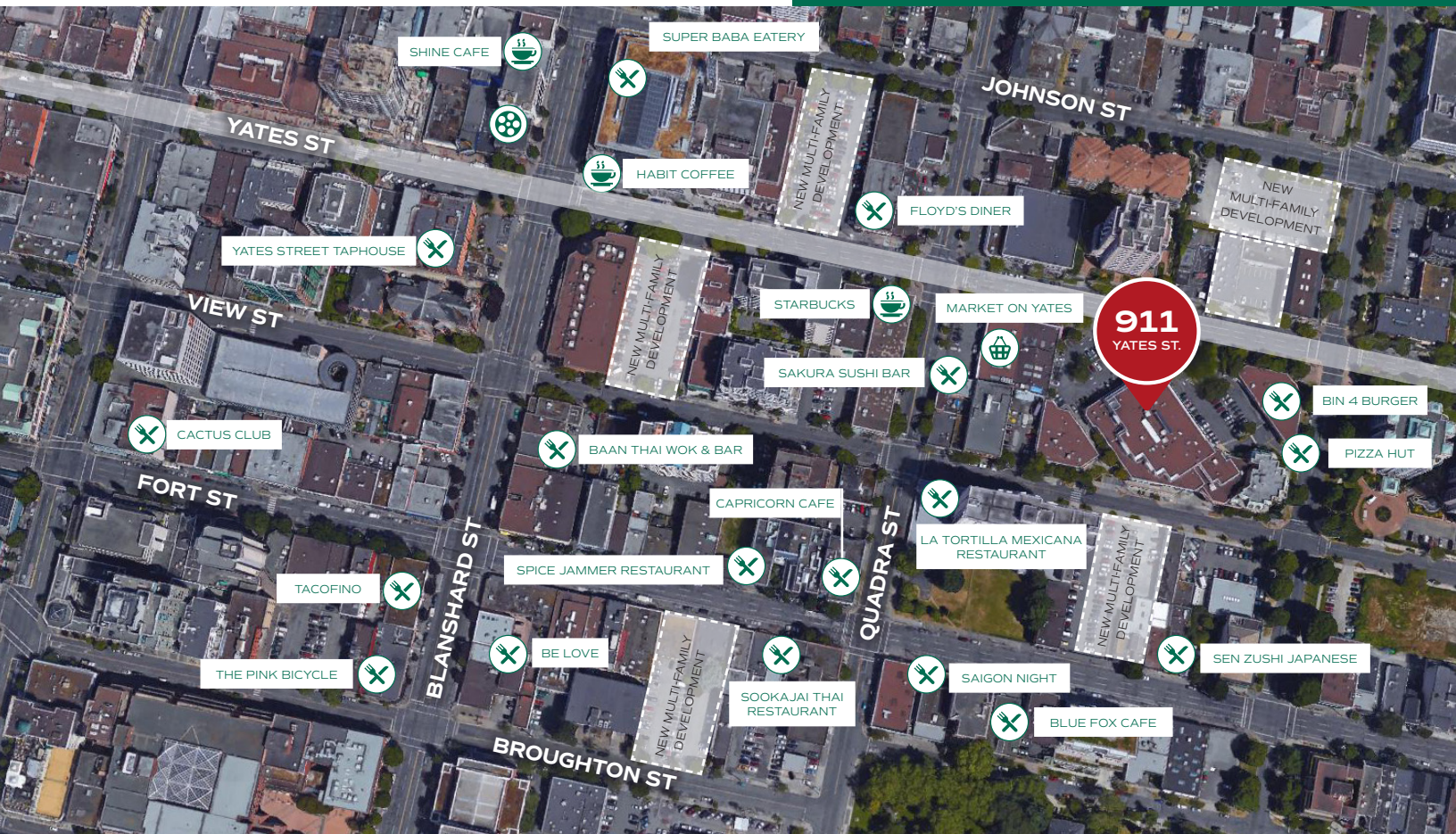
FOR
LEASE

911 YATES STREET

VICTORIA, BC

TURN-KEY SPACE
IN PROFESSIONAL BUILDING

Located in the Harris Green district, the subject property is ideally situated mid-block Yates Street between Vancouver and Quadra Streets. This office building stands at the centre of the Harris Green retail centre, anchored by "The Market on Yates" supermarket and London Drugs. Amenities nearby include specialty retail shops, cafes and restaurants.



DETAILS

RENTABLE AREA Suite 214 - 1,603 SF
Suite 218 - 1,374 SF

ASKING LEASE RATE Suite 214 - \$17.00 PSF
Suite 218 - \$18.00 PSF

OP. COSTS & TAXES \$12.27 PSF
(2018 estimate)

ZONING R-5 Zone

Permitted uses include retail stores, business and professional offices, financial lending institutions, bakeries, high tech, social and recreational clubs, and call centres.

- IT IS CURRENTLY BUILT OUT TO ACCOMMODATE A MEDICAL OFFICE TENANT
- THE FUNCTIONAL FLOOR PLAN INCLUDES A RECEPTION AREA, 7 CONSULTATION ROOMS, 1 OFFICE, KITCHENETTE AND HANDICAP ACCESSIBLE WASHROOM
- HVAC
- AMPLE ON-SITE CUSTOMER PARKING
- ELEVATOR ACCESS
- PROFESSIONALLY MANAGED BUILDING
- CENTRALLY LOCATED NEAR PLENTY OF AMENITIES

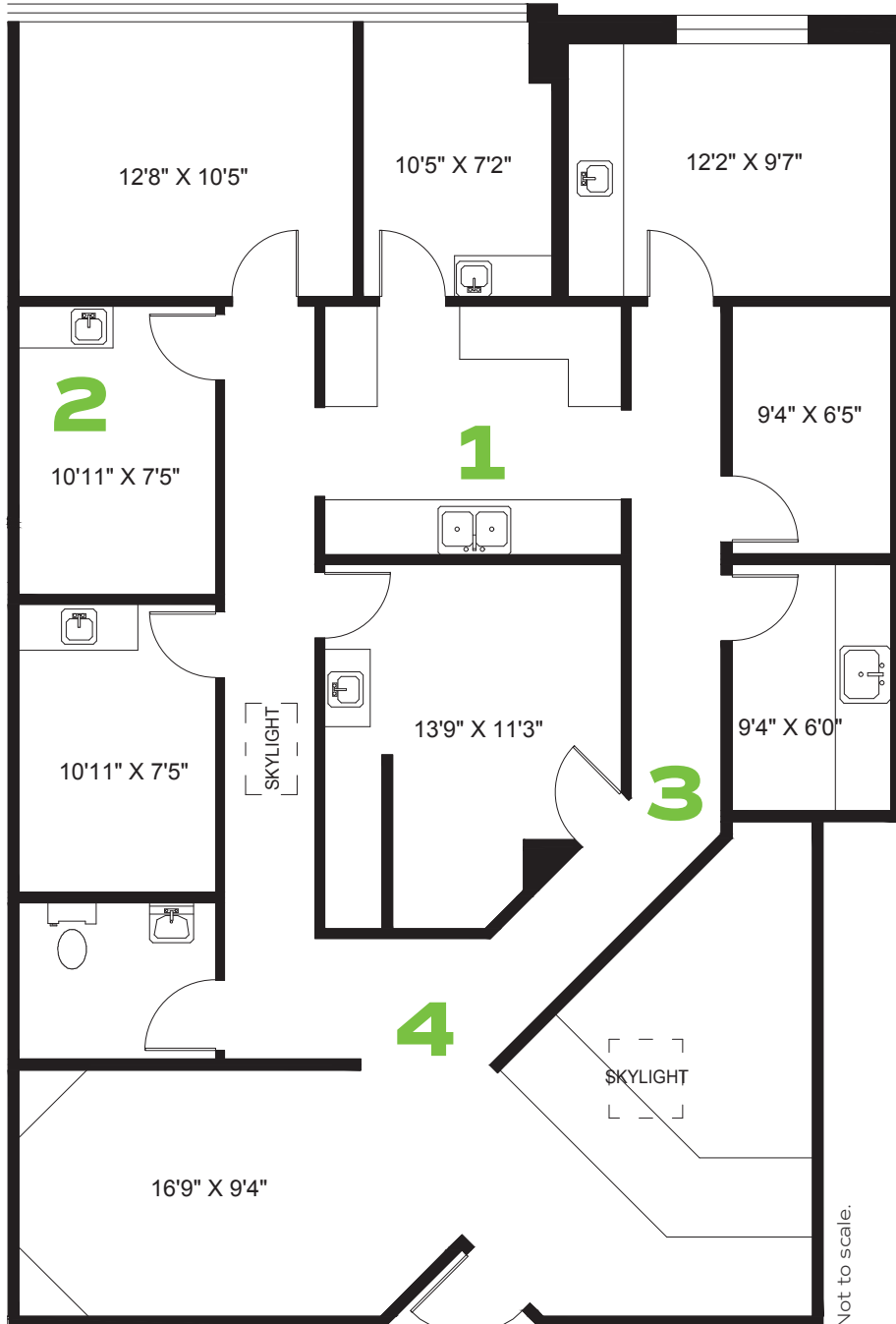
SUITE
214

911 YATES STREET

VICTORIA, BC

1,603 SF

AVAILABLE IMMEDIATELY



CBRE Limited
1026 Fort Street | Victoria, BC V8V 3K4 | www.cbvictoria.ca

CBRE

This disclaimer shall apply to CBRE Limited, Real Estate Brokerage, and to all other divisions of the Corporation; to include all employees and independent contractors ("CBRE"). The information set out herein, including, without limitation, any projections, images, opinions, assumptions and estimates obtained from third parties (the "Information") has not been verified by CBRE, and CBRE does not represent, warrant or guarantee the accuracy, correctness and completeness of the Information. CBRE does not accept or assume any responsibility or liability, direct or consequential, for the Information or the recipient's reliance upon the Information. The recipient of the Information should take such steps as the recipient may deem necessary to verify the Information prior to placing any reliance upon the Information. The Information may change and any property described in the Information may be withdrawn from the market at any time without notice or obligation to the recipient from CBRE. CBRE and the CBRE logo are the service marks of CBRE Limited and/or its affiliated or related companies in other countries. All other marks displayed on this document are the property of their respective owners. All Rights Reserved. Mapping Sources: Canadian Mapping Services canadamapping@cbre.com; DMTI Spatial, Envrionics Analytics, Microsoft Bing, Google Earth.

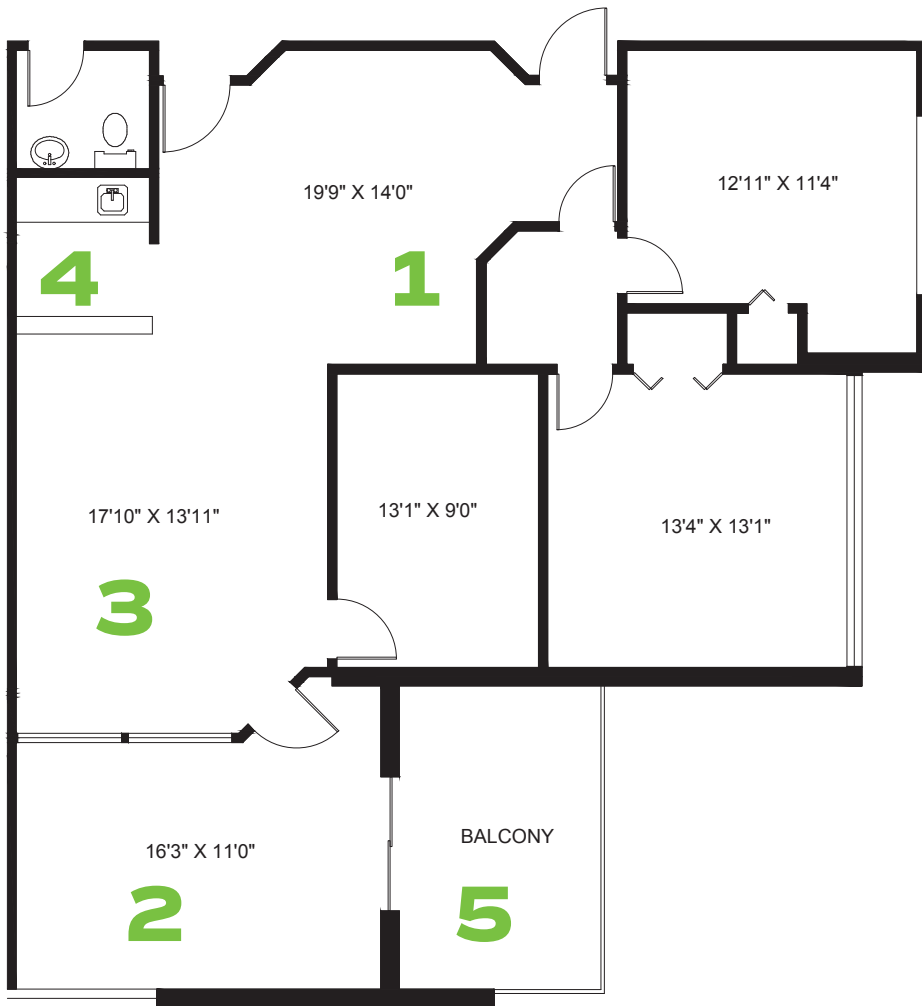
SUITE
218

911 YATES STREET

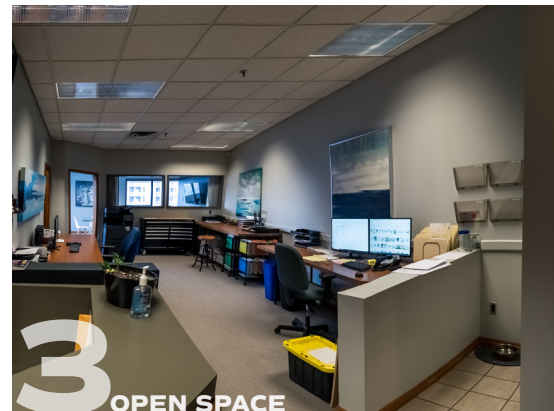
VICTORIA, BC

1,374 SF

AVAILABLE IMMEDIATELY



Not to scale.



ROSS MARSHALL
PERSONAL REAL ESTATE CORPORATION
VICE PRESIDENT | BROKERAGE SERVICES
250 386 0004
ross.marshall@cbre.com

REID MALTMAN
SALES REPRESENTATIVE
BROKERAGE SERVICES
250 385 1225
reid.maltman@cbre.com

ADRIAN BERUSCHI
PERSONAL REAL ESTATE CORPORATION
VICE PRESIDENT | RETAIL PROPERTIES
604 662 5138
adrian.beruschi@cbre.com

CBRE Limited
1026 Fort Street | Victoria, BC V8V 3K4
www.cbrevictoria.ca

CBRE