

UNIT 101

3030 JACKLIN RD
Langford, BC



FOR LEASE

**BOUTIQUE RETAIL SPACE
IN HIGH-TRAFFIC AREA**

JAMES MURRAY

Sales Representative | Brokerage Services
250 385 1225 | james.murray@cbre.com

CHRIS RUST

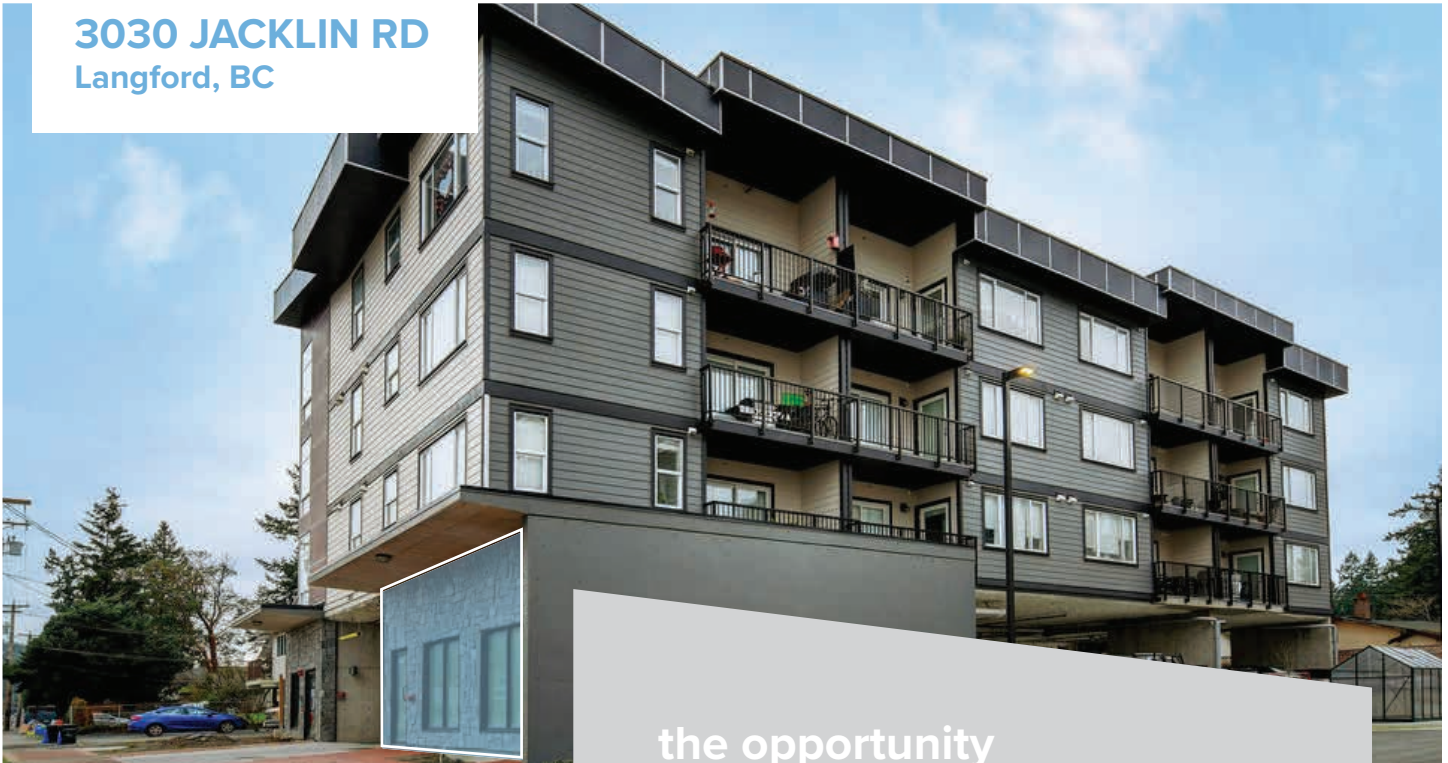
PERSONAL REAL ESTATE CORPORATION
Senior Vice President | Brokerage Services
250 386 0005 | chris.rust@cbre.com

CBRE

UNIT 101

3030 JACKLIN RD

Langford, BC



the opportunity

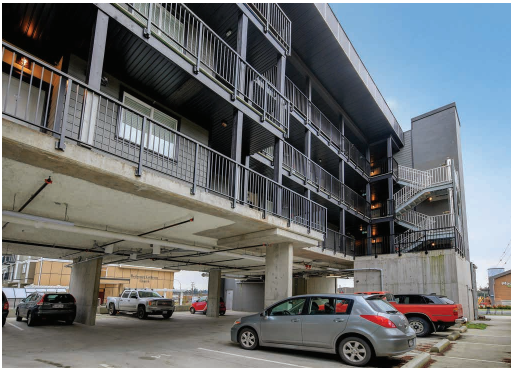
Unique chance to lease affordable boutique retail space on Jacklin Rd next to Langford's primary retail/food destinations: Belmont Market and Westshore Town Centre. Perfectly suited to a wide variety of tenants, Unit 101 benefits from proximity to many successful businesses including A&W, Much Burrito, Sushi Langford, Fatburger, Freshii, Thrifty Foods, Origin Bakery, Starbucks, Tim Hortons, Shopper's Drug Mart, and more.

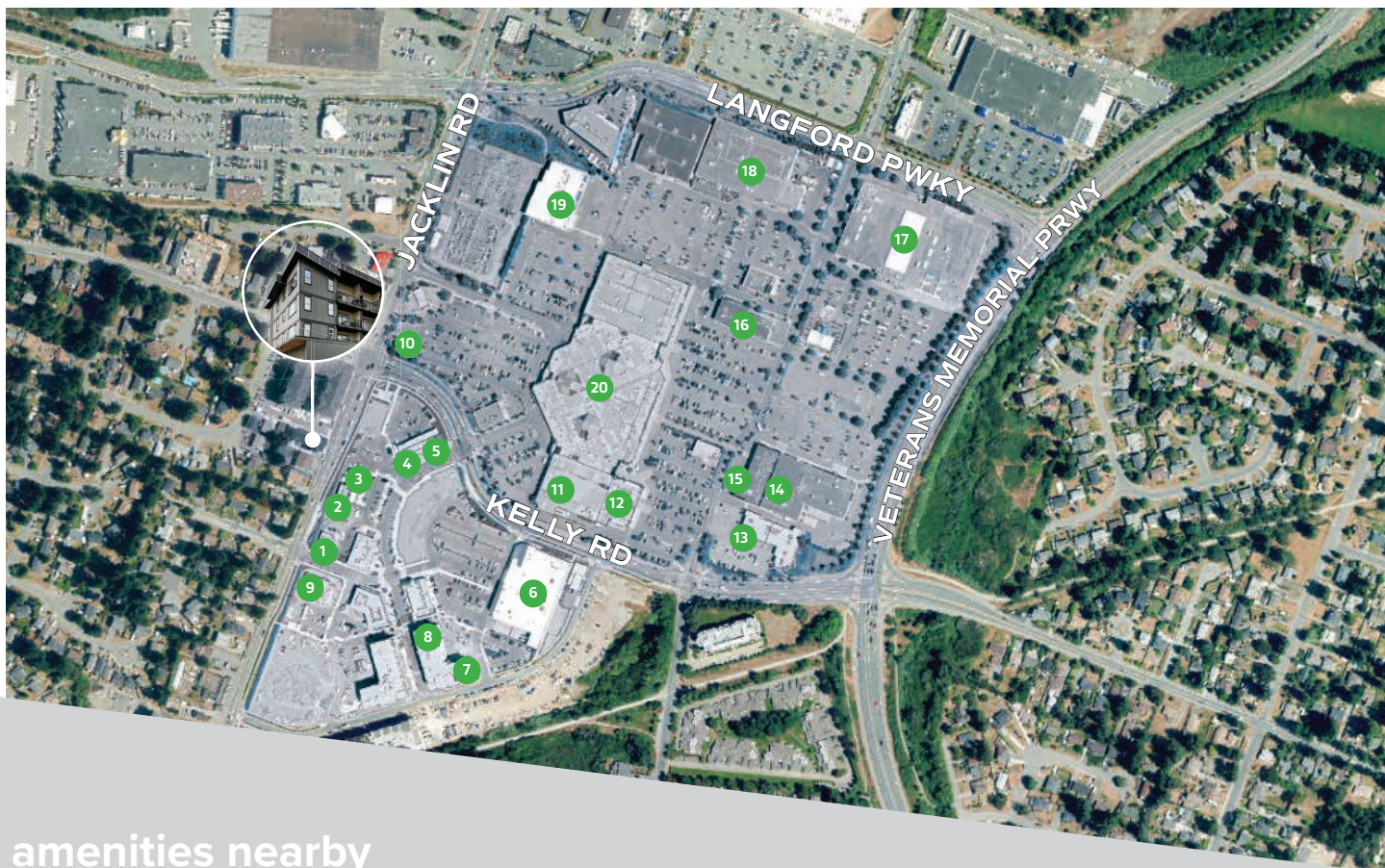
details

SIZE	363 SF
MONTHLY RENT	\$2,200 plus GST
AVAILABLE	Immediately

highlights

- High-Profile Location on Jacklin Rd
- Prominent Signage Opportunity
- Situated Across from Belmont Market
- Ample Natural Light Throughout
- Handicap Accessible Entry and Washroom
- Proximity to Successful Businesses





amenities nearby

- | | | | |
|-----------------|-----------------------------|------------------------|-----------------------------|
| 1 Starbucks | 6 Thrifty Foods | 11 Fairway Markets | 16 BC Liquor Store |
| 2 A&W | 7 The Original FARM | 12 Shopper's Drug Mart | 17 Real Canadian Superstore |
| 3 Mucho Burrito | 8 Origin Gluten Free Bakery | 13 Bulk Barn | 18 Canadian Tire |
| 4 Fatburger | 9 KFC | 14 Sport Chek | 19 Cineplex Odeon |
| 5 Freshii | 10 Tim Hortons | 15 Noodlebox | 20 Westshore Town Centre |

contact

JAMES MURRAY

Sales Representative | Brokerage Services
250 385 1225
james.murray@cbre.com

CHRIS RUST

PERSONAL REAL ESTATE CORPORATION
Senior Vice President | Brokerage Services
250 386 0005
chris.rust@cbre.com

CBRE Limited | 1026 Fort Street | Victoria, BC V8V 3K4
www.cbrevictoria.com

This disclaimer shall apply to CBRE Limited, Real Estate Brokerage, and to all other divisions of the Corporation; to include all employees and independent contractors ("CBRE"). The information set out herein, including, without limitation, any projections, images, opinions, assumptions and estimates obtained from third parties (the "Information") has not been verified by CBRE, and CBRE does not represent, warrant or guarantee the accuracy, correctness and completeness of the Information. CBRE does not accept or assume any responsibility or liability, direct or consequential, for the Information or the recipient's reliance upon the Information. The recipient of the Information should take such steps as the recipient may deem necessary to verify the Information prior to placing any reliance upon the Information. The Information may change and any property described in the Information may be withdrawn from the market at any time without notice or obligation to the recipient from CBRE. CBRE and the CBRE logo are the service marks of CBRE Limited and/or its affiliated or related companies in other countries. All other marks displayed on this document are the property of their respective owners. All Rights Reserved. Mapping Sources: Canadian Mapping Services canadamapping@cbre.com; DMTI Spatial, Environments Analytics, Microsoft Bing, Google Earth.

CBRE