

High-Traffic Retail Space On Popular Shopping Corridor



1303 Government Street

VICTORIA, BC

CHRIS RUST
PERSONAL REAL ESTATE CORPORATION
Senior Vice President | Brokerage Services
250 386 0005
chris.rust@cbre.com

COOPER ANDERSON
Sales Representative
Brokerage Services
250 386 0276
cooper.anderson@cbre.com

CBRE

1303 Government Street

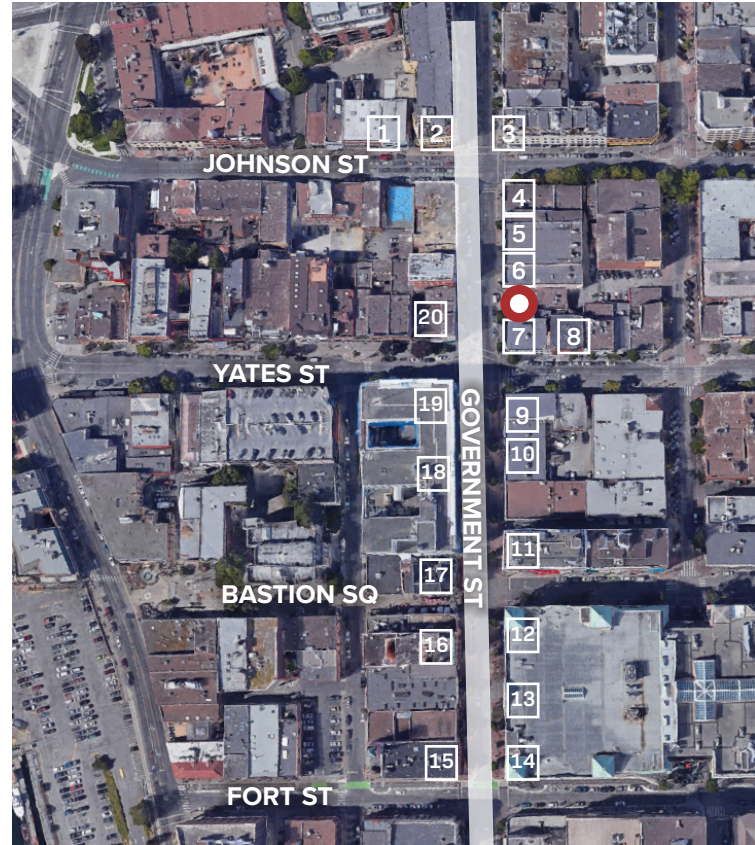
VICTORIA, BC

THE OPPORTUNITY

Unique opportunity to lease high-profile retail space along Victoria's popular Government Street shopping corridor. The subject space benefits from high foot-traffic counts year-round for both locals and tourists. In addition to its stunning heritage exterior, the space boasts a well-maintained interior with ample natural light throughout. 1303 Government Street is situated next to many successful businesses, including Starbucks, Arc'Teryx, Patagonia, Eddie Bauer, Roots, Fjall Raven, Mountain Equipment Co-op, Lululemon, and more.

DETAILS

SIZE	2,060 SF
NET RENT	Contact Listing Agents
ADDITIONAL RENT	\$13.00 PSF (2024 estimate)
AVAILABLE	Immediately



- || **EXCELLENT LOCATION ALONG HIGH-TRAFFIC SHOPPING CORRIDOR**
- || **HIGH-PROFILE SIGNAGE ON GOVERNMENT STREET**
- || **BRIGHT SPACE WITH HIGH CEILINGS**
- || **BEAUTIFUL STOREFRONT IN ICONIC HERITAGE BUILDING**

○ SUBJECT

1	LULULEMON	11	NEW BALANCE
2	MEC	12	EARLS RESTAURANT
3	DAVID'S TEA	13	THE BAY
4	FJALL RAVEN	14	BELOW THE BELT
5	GAP	15	LUGARO
6	ARC'TERYX	16	GARRICK'S HEAD PUB
7	STARBUCKS	17	IRISH TIMES PUB
8	PATAGONIA	18	RUNNING ROOM
9	STREET JEANSWEAR	19	EDDIE BAUER
10	ROOTS	20	ECCO SHOES

Contact

CHRIS RUST
PERSONAL REAL ESTATE CORPORATION
Senior Vice President | Brokerage Services
250 386 0005
chris.rust@cbre.com

COOPER ANDERSON
Sales Representative
Brokerage Services
250 386 0276
cooper.anderson@cbre.com



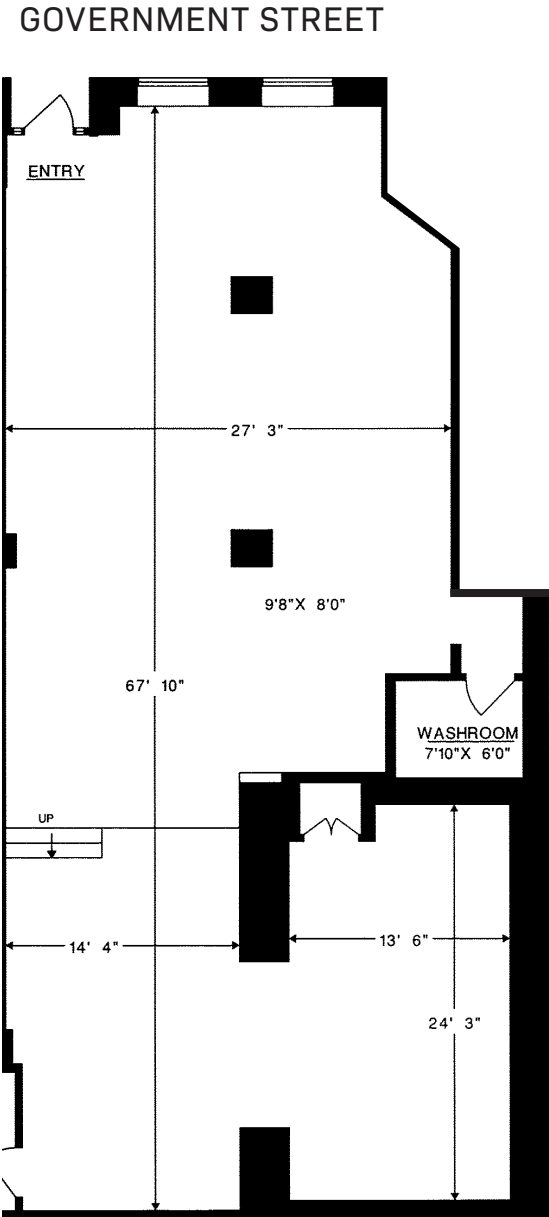
1303 Government Street, VICTORIA, BC

CBRE

CBRE LIMITED | 110-800 Yates Street, Victoria BC | www.cbrevictoria.com

This disclaimer shall apply to CBRE Limited, Real Estate Brokerage, and to all other divisions of the Corporation; to include all employees and independent contractors ("CBRE"). The information set out herein, including, without limitation, any projections, images, opinions, assumptions and estimates obtained from third parties (the "Information") has not been verified by CBRE, and CBRE does not represent, warrant or guarantee the accuracy, correctness and completeness of the Information. CBRE does not accept or assume any responsibility or liability, direct or consequential, for the Information or the recipient's reliance upon the Information. The recipient of the Information should take such steps as the recipient may deem necessary to verify the Information prior to placing any reliance upon the Information. The Information may change and/or any property described in the Information may be withdrawn from the market at any time without notice or obligation to the recipient from CBRE. CBRE and the CBRE logo are the service marks of CBRE Limited and/or its affiliated or related companies in other countries. All other marks displayed on this document are the property of their respective owners. All Rights Reserved. Mapping Sources: Canadian Mapping Services canadamapping@cbre.com; DMT Spatial, EnviroNics Analytics, Microsoft Bing, Google Earth.

High-Traffic Retail Space On Popular Shopping Corridor



1303 Government Street, VICTORIA, BC

CHRIS RUST
PERSONAL REAL ESTATE CORPORATION
Senior Vice President | Brokerage Services
250 386 0005
chris.rust@cbre.com

COOPER ANDERSON
Sales Representative
Brokerage Services
250 386 0276
cooper.anderson@cbre.com

