

FOR SALE

Brand New Strata Warehouse Unit

**4382 Westshore Parkway
Langford, BC**

**Only 1 Unit Remaining
Available Summer 2021**



New Strata Warehouse Unit in Glenshire Business Park

- ▶ Tilt up concrete construction
- ▶ 21' clear height in warehouse
- ▶ Each unit with structural mezzanine for office or storage
- ▶ 12'X12' & 12'X14' drive in overhead doors
- ▶ 225 amp 3 phase electrical
- ▶ Fully sprinklered
- ▶ On-site parking for visitors and staff
- ▶ Zoning allows for a wide range of light industrial and service commercial uses
- ▶ Easy access to the Trans Canada Hwy and close proximity to Langford's city core

CBRE

The Opportunity

CBRE is pleased to present the opportunity to purchase a new strata warehouse unit in the Glenshire Business Park. Purchasers have the ability to work with Vendor and Architect to design and build out the space. Located in one of the Westshore's newest business parks, purchaser's will benefit from flexible industrial zoning allowing a wide variety of uses.



The Details

4382 Westshore Parkway Langford, BC

Strata Units

Unit A: Main 6,320 Sq. Ft.
Mezzanine 2,437 Sq. Ft.
Total **8,757 Sq. Ft.**

Electrical

225 Amp 3 Phase

Heat

Gas Fired Overhead in Warehouse

Ceiling Heights

21' Floor to Underside of Trusses
10' Under Mezzanine

Loading Doors

Grade Level 12'X12' & 12'X14'

Parking

Unit A: 14

Completion

May 1, 2021

Strata Fees

Unit A: \$850

PRICE

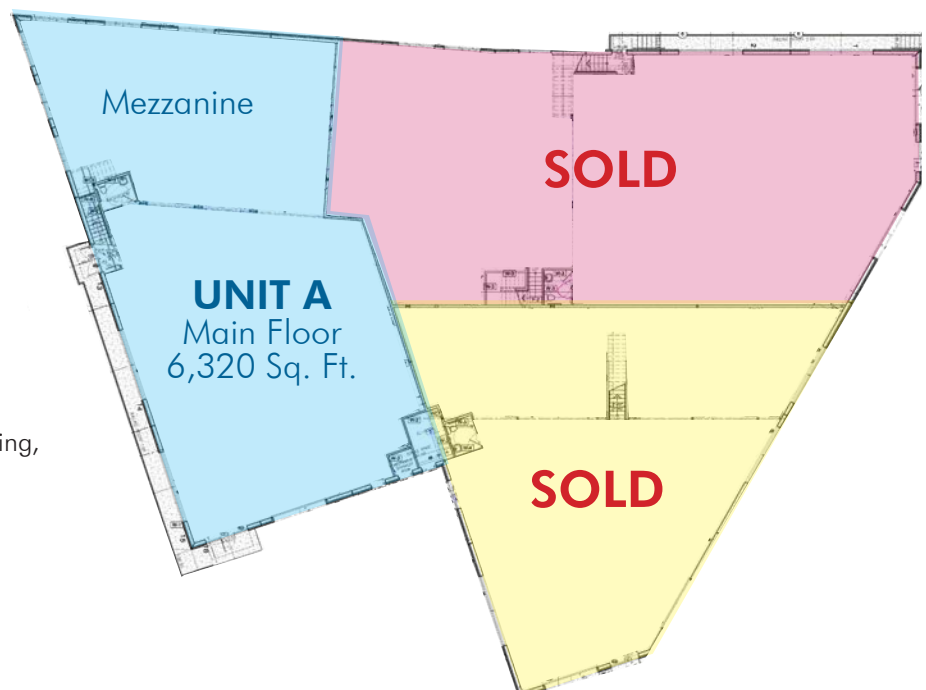
Unit A: \$2,975,000

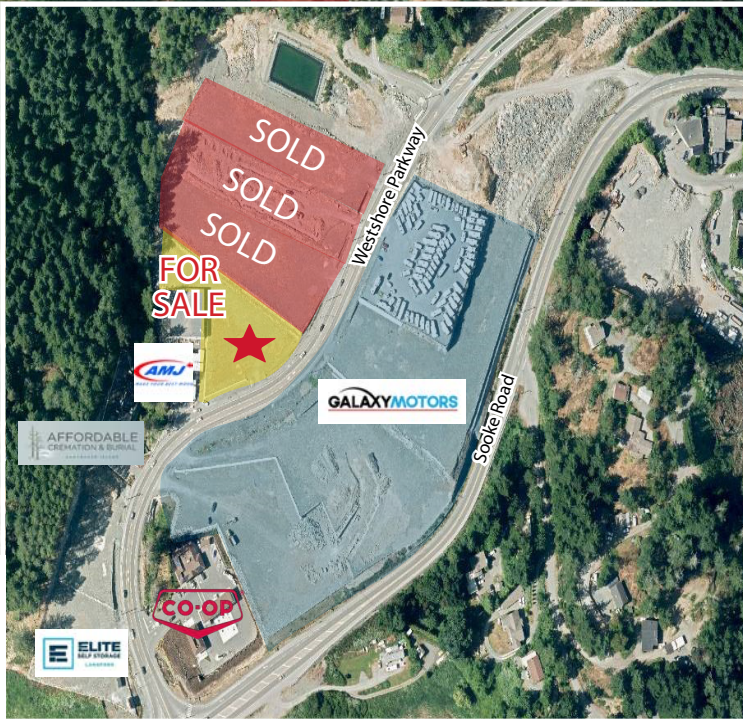
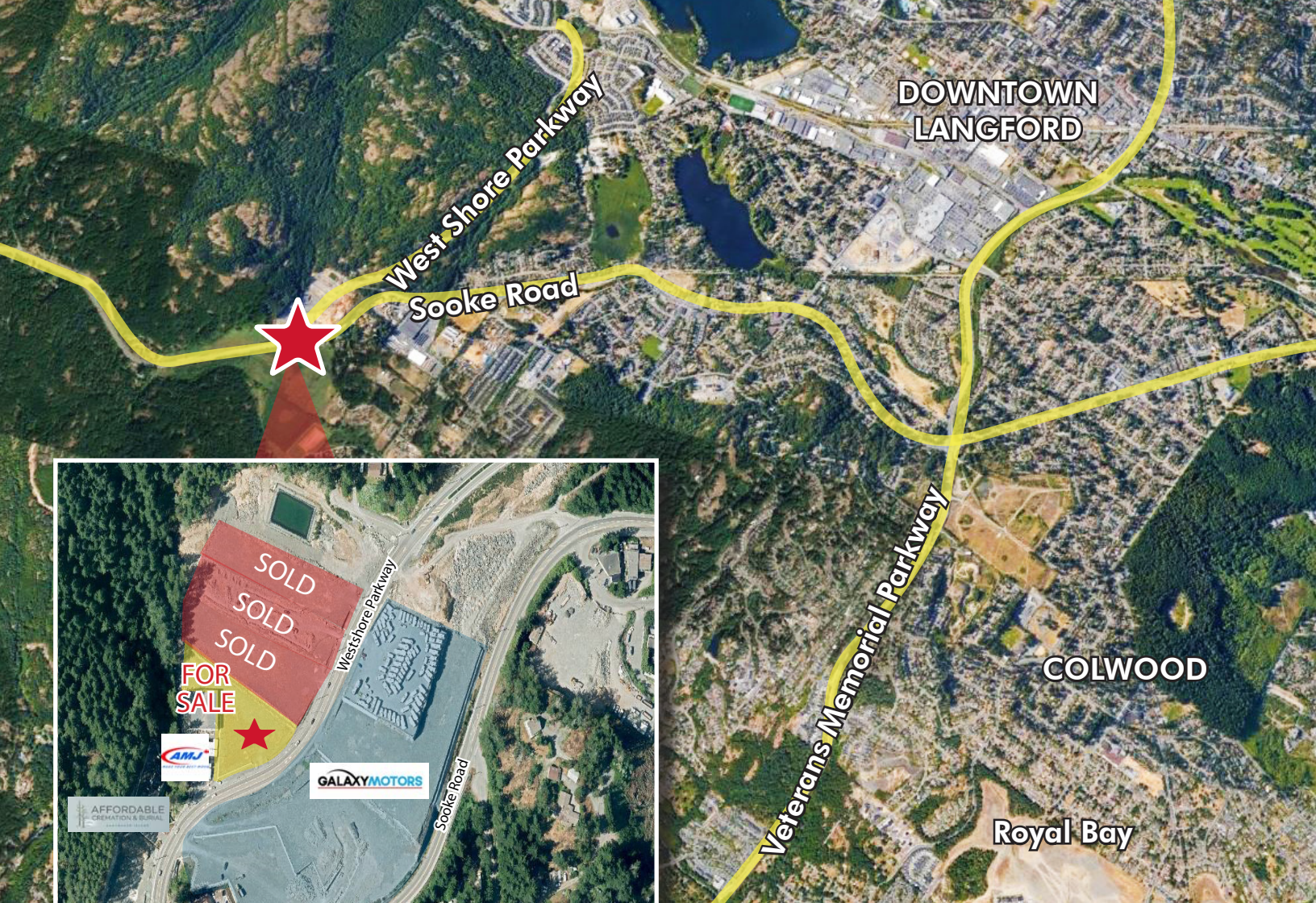
The Zoning

Business Park 2A (BP2A Sooke Road West) Zone

Allows for a wide range of uses

- Building lumber supply establishments
- General uses including truck terminal facilities
- Light industrial uses for offices and storage
- Recycling depots
- Retail sales limited to 25% of the gross floor area of a building
- Wholesale and storage warehouse buildings
- Metal, fiberglass, concrete or wood manufacturing, fabrication or sale
- Carpentry shops
- Light manufacturing and assembly
- Offices
- Rental and repair shop





**4382 Westshore Parkway
Langford, BC**

The Location

Glenshire Business Park is situated in a highly visible and convenient location at Westshore Parkway and Sooke Road and is just a 5 minute drive to Langford's main commercial core. With easy access to the Trans Canada Highway (#1), the location provides for easy servicing of Langford, up-island and the surrounding municipalities that make up the Westshore. It also benefits from being only a 25 minute drive to downtown Victoria.

Contact Us

Ross Marshall

Personal Real Estate Corporation
Senior Vice President
Brokerage Services
250 386 0004
ross.marshall@cbre.com

Chris Rust

Personal Real Estate Corporation
Senior Vice President
Brokerage Services
250 386 0005
chris.rust@cbre.com

www.cbrevictoria.com | CBRE Limited

1026 Fort Street, Victoria, BC V8V 3K4 | 250 386 0000

CBRE

This disclaimer shall apply to CBRE Limited, Real Estate Brokerage, and to all other divisions of the Corporation; to include all employees and independent contractors ("CBRE"). The information set out herein, including, without limitation, any projections, images, opinions, assumptions and estimates obtained from third parties (the "Information") has not been verified by CBRE, and CBRE does not represent, warrant or guarantee the accuracy, correctness and completeness of the Information. CBRE does not accept or assume any responsibility or liability, direct or consequential, for the Information or the recipient's reliance upon the Information. The recipient of the Information should take such steps as the recipient may deem necessary to verify the Information prior to placing any reliance upon the Information. The Information may change and any property described in the Information may be withdrawn from the market at any time without notice or obligation to the recipient from CBRE. CBRE and the CBRE logo are the service marks of CBRE Limited and/or its affiliated or related companies in other countries. All other marks displayed on this document are the property of their respective owners. All Rights Reserved. Mapping Sources: Canadian Mapping Services canadamapping@cbre.com; DMTI Spatial, Envrionics Analytics, Microsoft Bing, Google Earth.