

FOR SALE

Flex Commercial Warehouse & Showroom



Unit 7 - 601 Boleskine Road
Victoria, BC

Highlights

- ▶ Ideal Owner Occupier Opportunity
- ▶ Located steps from Uptown Shopping Centre
- ▶ High profile frontage with curb appeal
- ▶ Concrete building
- ▶ 18' to 22' ceilings
- ▶ Fully sprinklered
- ▶ Modern high end improvements/ finishes throughout
- ▶ Two dock level loading doors
- ▶ Includes reserved underground parking and surface parking



Opportunity

Victoria's Investment Properties Group is pleased to present the opportunity to acquire a 14,161 sq. ft high profile strata unit steps away from Uptown Shopping Centre. Ideal for an owner occupier or investor, this exceptionally well located property represents a rare opportunity to own a high profile strata unit improved with contemporary and high end finishes throughout the showroom, warehouse and offices.

Property Information

Civic Address

PID

Legal Address

7 - 601 Boleskine Rd, Victoria, BC
029-799-520

Strata Lot 7, Plan EPS634, Section
7 Land District 57, Together with
an interest in the common property
in the proportion to the unit entitle-
ment of the strata lot as shown on
form V

Unit Size

14,161 Sq. Ft.

Ceiling

18-22'

Parking

7 underground + 7 surface

Loading

2 dock level loading doors

Strata Fees

\$1,603.97 (per month)

PRICE

\$3,600,000

Zoning:

M2DW - Warehouse & Office

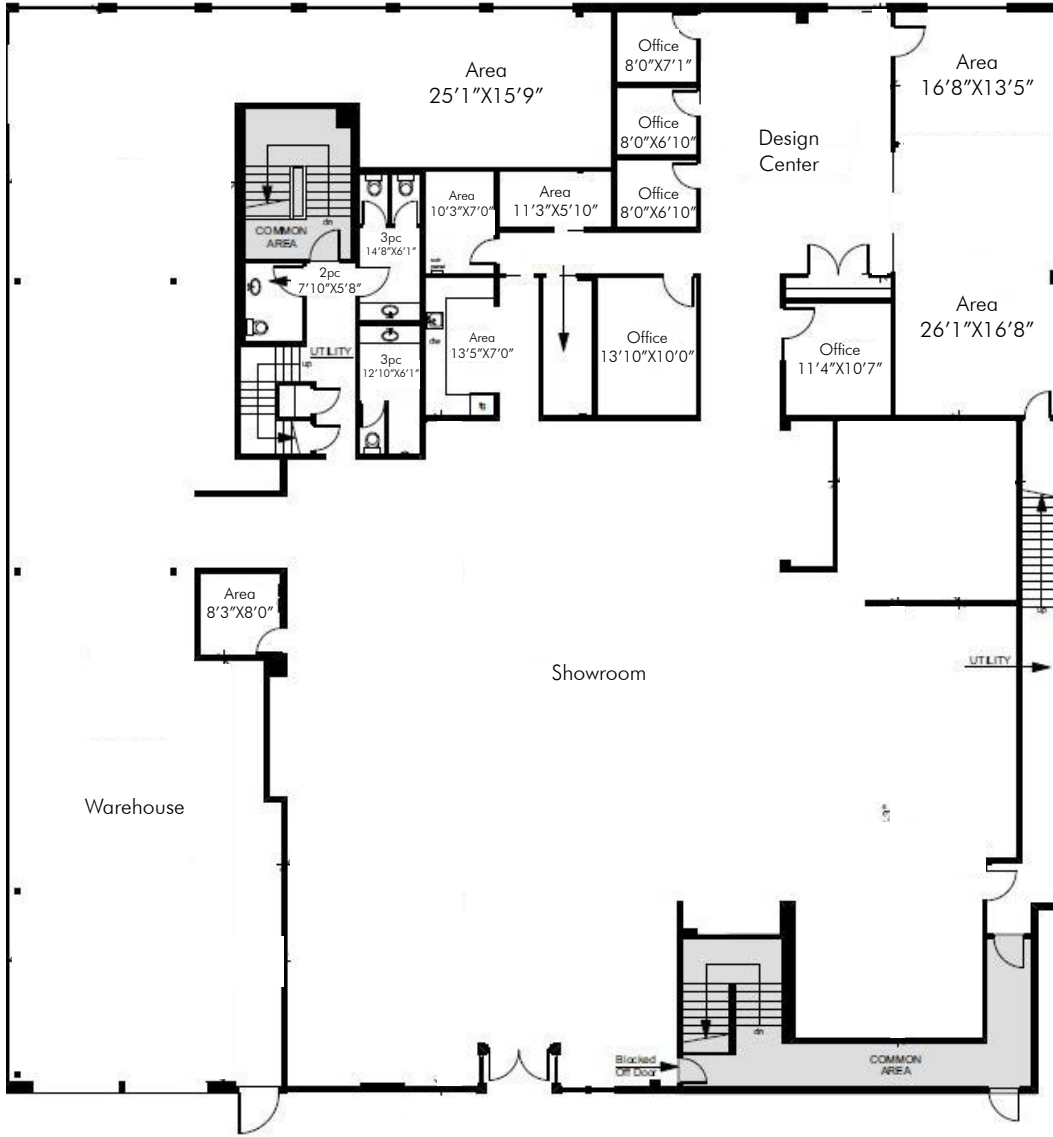
Uses permitted but not limited to:

- ▶ Industry
- ▶ Warehousing
- ▶ Wholesale & Warehouse distribution
- ▶ Office
- ▶ Commercial Instruction & Education
- ▶ Restaurant
- ▶ Food Processing
- ▶ Retail Sales Incidental to a Permitted Use
- ▶ Rental & Repair of Household Items, Tools, Appliances & Small Equipment
- ▶ Beverage Container Depot



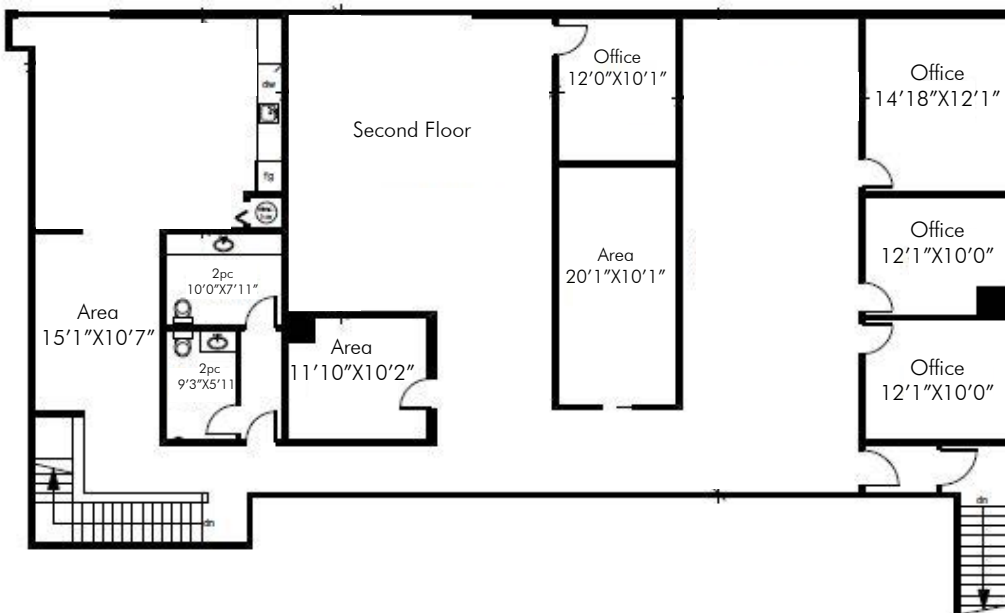
Main Floor

10,825 Sq. Ft.



Second Floor

3,336 Sq. Ft.





Location

Located in the geographic centre of Greater Victoria, steps to Uptown Shopping Centre and within 10 minutes to Victoria's Downtown core provides unparalleled access to Victoria's surrounding communities. The strata unit is situated between two major arterial routes, the Trans Canada Highway accessing the Westshore and up-island, and the Pat Bay Highway servicing the Saanich peninsula airport including the Swartz Bay ferry terminal. The property allows employees direct access to the Galloping Goose Trail, public transportation, and an abundance of amenities.

CONTACT US

Ross Marshall
 Personal Real Estate Corporation
 Senior Vice President
 Brokerage Services
 250 386 0004
 ross.marshall@cbre.com

Chris Rust
 Personal Real Estate Corporation
 Senior Vice President
 Brokerage Services
 250 386 0005
 chris.rust@cbre.com

www.cbrevictoria.com | CBRE Limited
 1026 Fort Street, Victoria, BC V8V 3K4 | 250 386 0000

INVESTMENT PROPERTIES GROUP
 VICTORIA

CBRE

This disclaimer shall apply to CBRE Limited, Real Estate Brokerage, and to all other divisions of the Corporation; to include all employees and independent contractors ("CBRE"). The information set out herein, including, without limitation, any projections, images, opinions, assumptions and estimates, obtained from third parties (the "Information") has not been verified by CBRE, and CBRE does not represent, warrant or guarantee the accuracy, correctness and completeness of the Information. CBRE does not accept or assume any responsibility or liability, direct or consequential, for the information or the recipient's reliance upon the information. The recipient of the information should take such steps as the recipient may deem necessary to verify the information prior to placing any reliance upon the information. The information may change and any property described in the information may be withdrawn from the market at any time without notice or obligation to the recipient from CBRE. CBRE and the CBRE logo are the service marks of CBRE Limited and/or its affiliated or related companies in other countries. All other marks displayed on this document are the property of their respective owners. All Rights Reserved. Mapping Sources: Canadian Mapping Services canadamapping@cbre.com, DMTI Spatial, Envia Analytics, Microsoft Bing, Google Earth.