

CBRE

FOR LEASE

**RETAIL SPACE IN
DOWNTOWN CORE**



**621 & 625
BROUGHTON
STREET
VICTORIA BC**

CONTACT

James Murray

Sales Representative | Brokerage Services

250 385 1225

james.murray@cbre.com

Chris Rust

Personal Real Estate Corporation

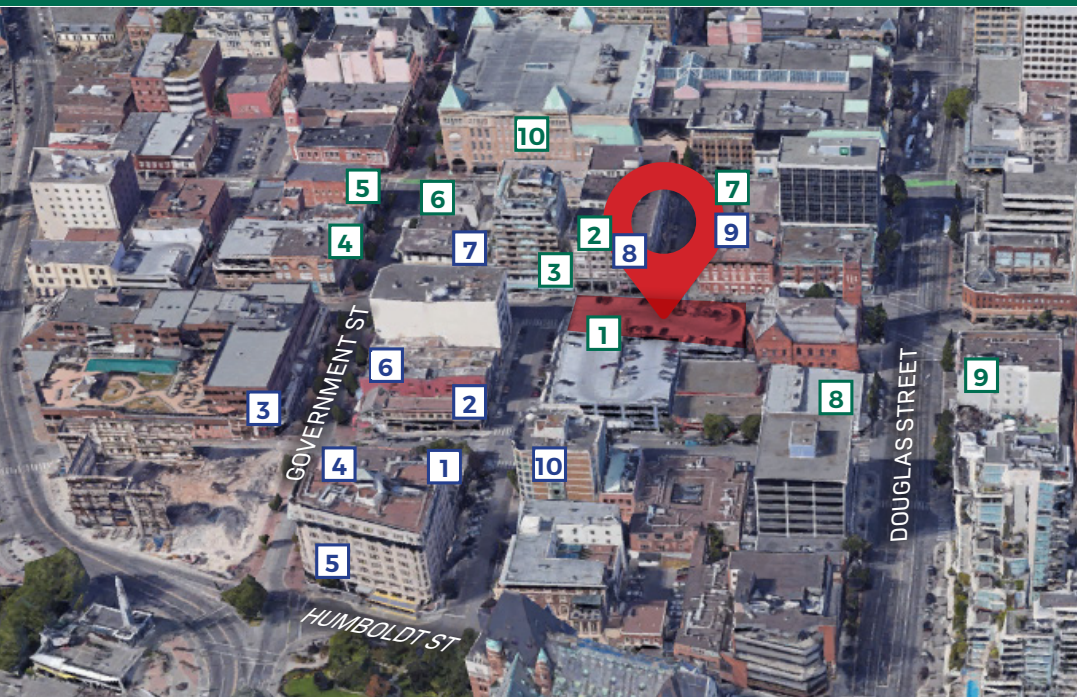
Senior Vice President | Brokerage Services

250 386 0005

chris.rust@cbre.com

OPPORTUNITY

Lease retail space at the heart of Downtown Victoria, situated between the Central Business District and Old Town. The subject retail unit benefits from high traffic counts year-round for both vehicles and pedestrians, proximity to a variety of thriving business, and a central location within Victoria's Downtown Core.

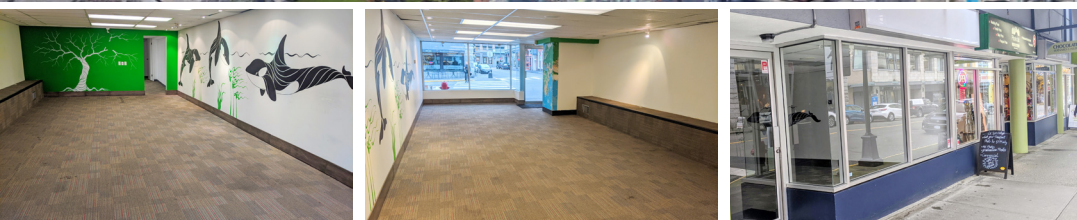


RETAIL

- 1 Francis Jewelers
- 2 D.G. Brenmer & Co. Menswear
- 3 Bagheera Boutique
- 4 Black Goat Cashmere
- 5 Lush
- 6 Birks
- 7 Trek Wear
- 8 Rexall
- 9 The Strath Liquor Store
- 10 The Bay Centre

FOOD/BEVERAGE

- 1 10 Acres Bistro
- 2 Sandwich Corner Café
- 3 Frankie's Modern Diner
- 4 Milano Coffee
- 5 Tractor Foods
- 6 Rogers Chocolates
- 7 Ebizo Sushi
- 8 Macchiato Café
- 9 Pagliacci's
- 10 The Courtney Room



DETAILS

Unit: 621
 Size: 1,459 Sq. Ft.
 Rent: \$20.00 per Sq. Ft.
 Additional Rent: \$16.66 per Sq. Ft. (est)
 Available: May 1, 2020

Unit: 625
 Size: 891 Sq. Ft.
 Rent: \$25.00 per Sq. Ft.
 Additional Rent: \$16.66 per Sq. Ft. (est)
 Available: Immediately

HIGHLIGHTS

- High-traffic location year-round
- Signage potential on Broughton St
- Ample parking in building parkade
- Large storefront windows
- Private washroom within space