

# FOR SALE

## Industrial Building & Land

### Owner-Occupier/ Investment Opportunity

7450 Butler Road  
Sooke Industrial Park



- ▶ 22,255 Sq. Ft. industrial building and/ or 1 vacant lot
- ▶ Adjacent 31,798 Sq. Ft. vacant lot
- ▶ 21'-40' ceiling height
- ▶ 16'W x 18'H grade level door
- ▶ 400 amp, 3 phase power
- ▶ Fully fenced
- ▶ Zoning allows for a wide range of uses
- ▶ Leased to a National tenant but would vacate for owner-user
- ▶ 6.7% return on asking price

# The Opportunity

The Investment Properties Group is pleased to present the opportunity to purchase an industrial building and land in the Sooke Industrial Park. One property has a 22,255 sf building on .76 acres of land and the adjacent lot is 31,798 sf ( .73 acres) and is vacant. The building currently has a national tenant with a lease in place but would vacate should the building sell to an owner occupier. Both properties have excellent general industrial zoning which allows for a wide range of uses.

## Lot 62

<b>Civic Address</b>	62 - 7450 Butler Road, Sooke, BC
<b>PID</b>	028-646-665
<b>Legal Address</b>	Strata Lot 26 Section 16 Otter Point District Strata Plan VIS7096
<b>Land Size</b>	33,105 Sq. Ft./ 0.76 Acres
<b>Building Size</b>	22,255 Sq. Ft.
<b>Basic Construction</b>	Steel with Fabric Roof
<b>Door</b>	16'W x 18'H Grade Level Door
<b>Term</b>	December 31, 2023
<b>PRICE</b>	<b>\$2,250,000</b>
<b>CAP RATE</b>	<b>6.7%</b>

## Lot 64

<b>Civic Address</b>	64 - 7450 Butler Road, Sooke, BC
<b>PID</b>	028-646-673
<b>Legal Address</b>	Strata Lot 27 Section 16 Otter Point District Strata Plan VIS7096
<b>Land Size</b>	31,798 Sq. Ft./ 0.73 Acres
<b>PRICE</b>	<b>\$550,000</b>

## Zoning

### M-SBP Sooke Business Park Industrial Zone

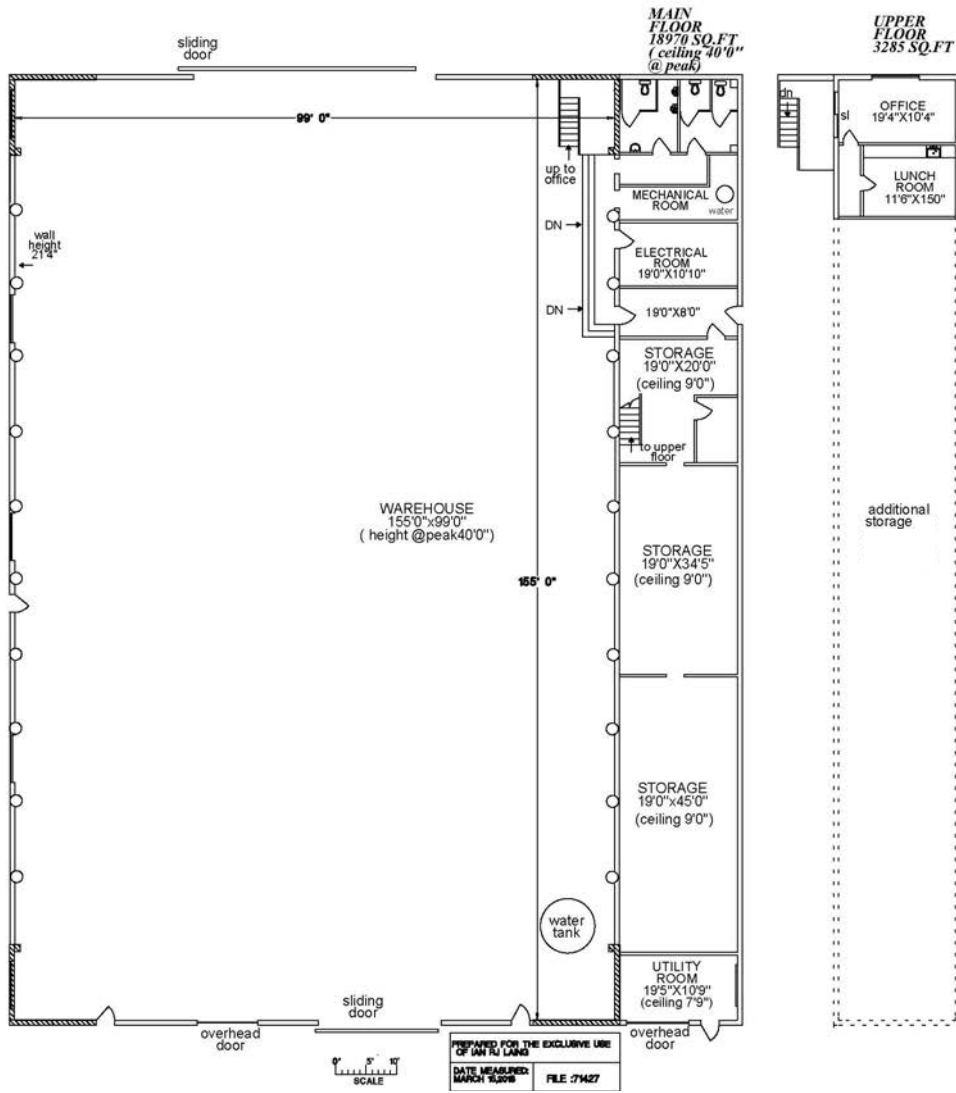
Uses permitted but not limited to:

- **General Industrial Uses**
- Business office and support services
- Athletic facilities
- Drive-in theatres
- Vehicle sales/rentals
- Auction rooms and places
- Unenclosed storage
- Retail sales of building and landscape supplies
- Retail sales accessory to a principal industrial use
- One dwelling unit for the use of a caretaker accessory to principal use
- **Intensive agriculture - Medical Marijuana Production**



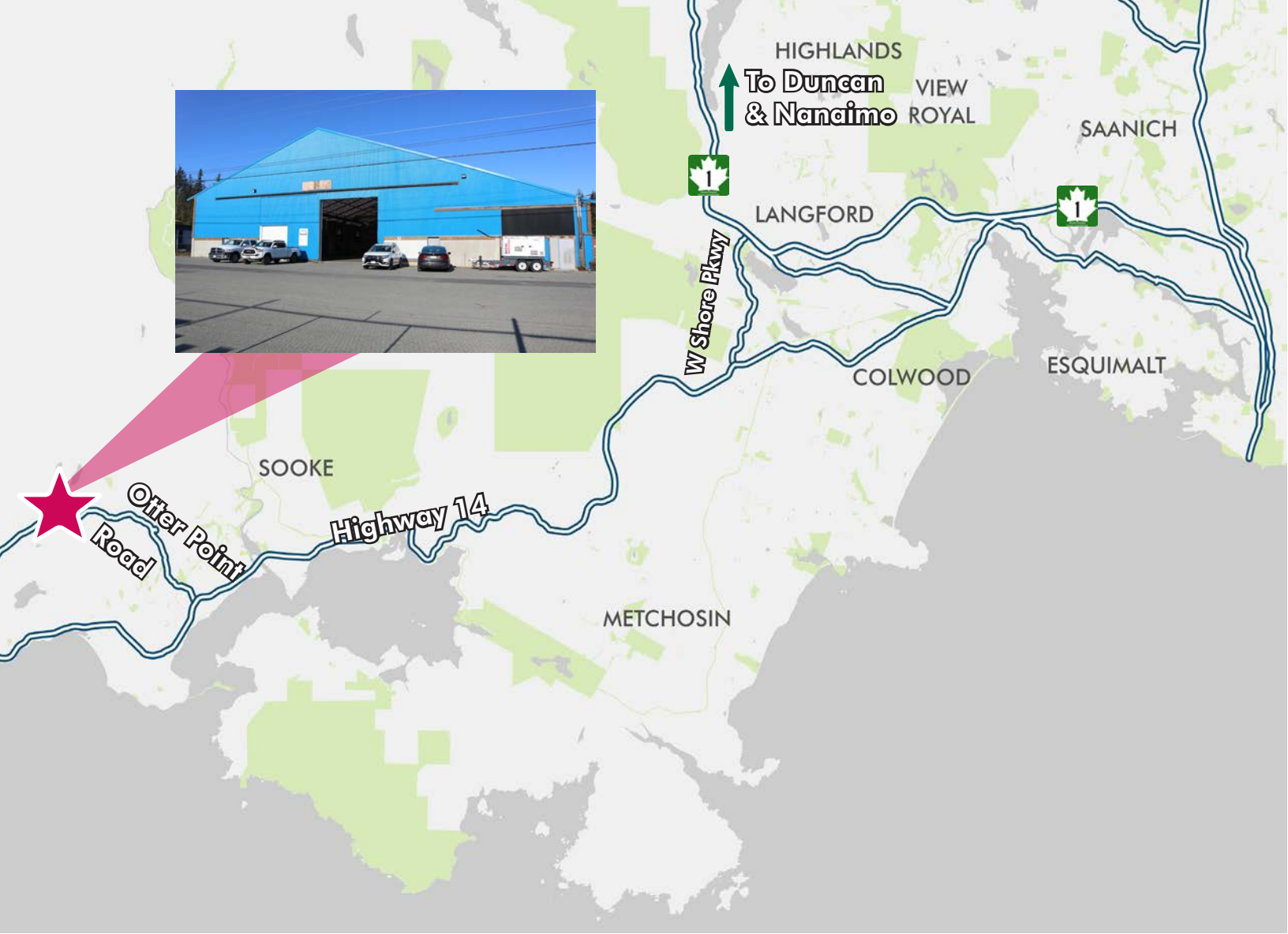
**7450 Butler Road**  
Sooke Industrial Park

# Floor Plan - #62



- 18,970 Sq. Ft. on main level
- 3,285 Sq. Ft. of office and additional storage on the upper floor
- Male/ Female washrooms
- Staff lunch area





## The Location

Sooke Industrial Park is located just 5 minutes from Sooke’s Downtown Core, and 30 minutes to Langford. The property provides easy access to the Highway 14, offering easy servicing of Langford, up-island and the surrounding municipalities that make up the Westshore. Businesses in the Sooke Industrial Park include West Coast Super Storage, Northern Board, and Sooke Soil & Landscape Ltd.

## CONTACT US

**Chris Rust**  
 Personal Real Estate Corporation  
 Senior Vice President  
 Brokerage Services  
 250 386 0005  
 chris.rust@cbre.com

**Ross Marshall**  
 Personal Real Estate Corporation  
 Senior Vice President  
 Brokerage Services  
 250 386 0004  
 ross.marshall@cbre.com

www.cbrevictoria.com | CBRE Limited  
 1026 Fort Street, Victoria, BC V8V 3K4 | 250 386 0000

INVESTMENT PROPERTIES GROUP  
 VICTORIA

**CBRE**

This disclaimer shall apply to CBRE Limited, Real Estate Brokerage, and to all other divisions of the Corporation, to include all employees and independent contractors ("CBRE"). The information set out herein, including, without limitation, any projections, images, opinions, assumptions and estimates obtained from third parties (the "Information") has not been verified by CBRE, and CBRE does not represent, warrant or guarantee the accuracy, timeliness and completeness of the Information. CBRE does not accept or assume any responsibility or liability, direct or consequential, for the information or the recipient's reliance upon the Information. The recipient of the Information should take such steps as the recipient may deem necessary to verify the Information prior to placing any reliance upon the Information. The Information may change and any property described in the Information may be withdrawn from the market at any time, without notice or obligation to the recipient from CBRE. CBRE and the CBRE logo are the service marks of CBRE Limited and/or its affiliated or related companies in other countries. All other marks displayed on this document are the property of their respective owners. All Rights Reserved. Mapping Sources: Canadian Mapping Services canadamapping@cbre.com, DMTI Spatial, Enwironics Analytics, Microsoft Bing, Google Earth.