

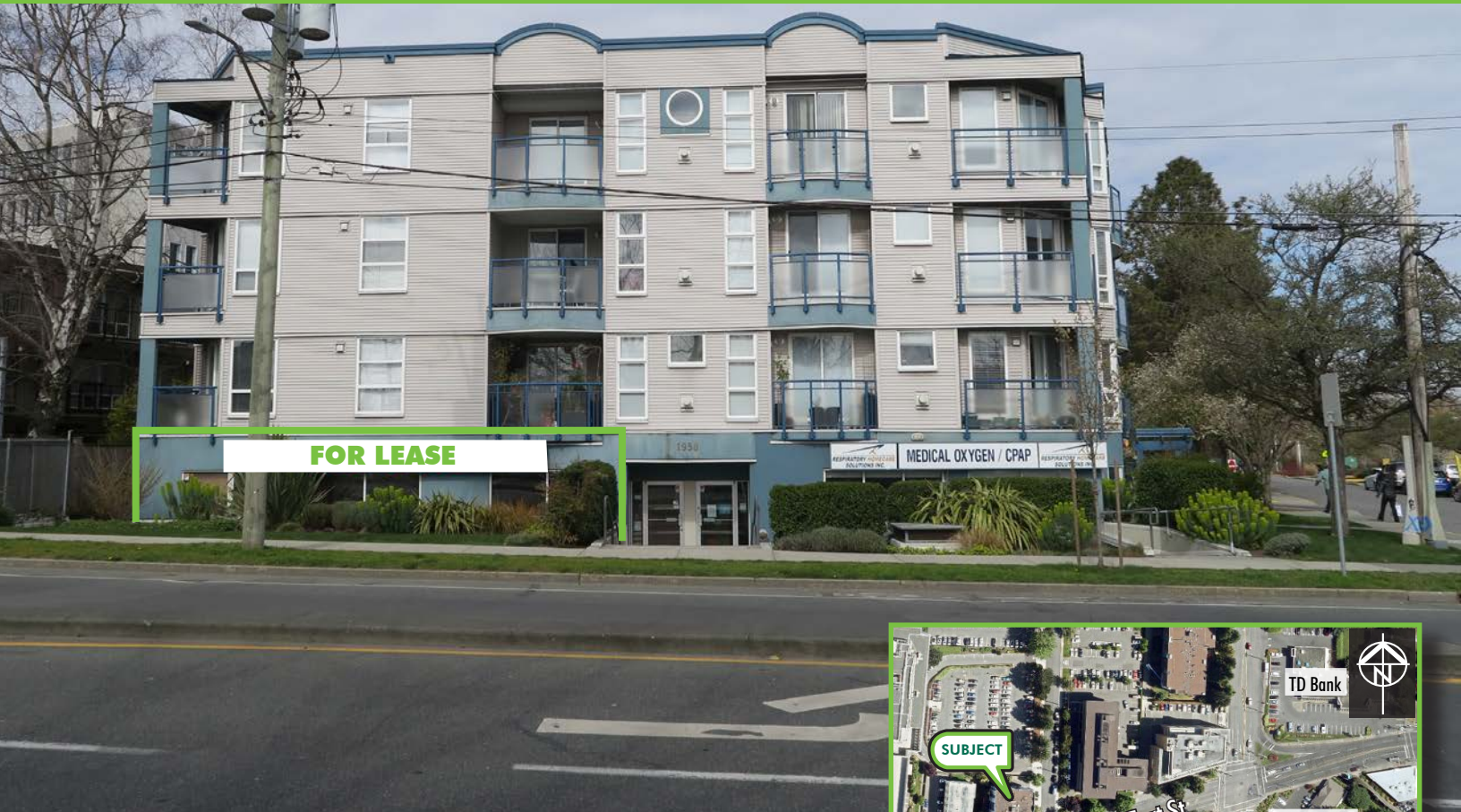
# FOR LEASE OFFICE/RETAIL SPACE

## 1950 FORT STREET VICTORIA, BC

AVAILABLE AREA:	Unit A: 1,647 sq. ft.
RENTAL RATE:	Unit A: \$19.00 per sq. ft.
OP COSTS & TAXES:	\$10.27 per sq. ft. (estimate)
ZONING:	C-1 Limited Commercial District
AVAILABLE:	February 1, 2020

### LOCATION:

This ground floor office/retail space is located at the busy intersection of Fort Street and Foul Bay Road which is a key commercial area for residents of both the City of Victoria and the District of Oak Bay. Neighboring tenants include Save-On-Foods, BC Liquor Store, Starbucks, Dairy Queen, Subway, TD Bank and Island Savings Credit Union.



FOR MORE INFORMATION PLEASE CONTACT:

**James Murray**  
Sales Representative  
Brokerage Services  
250 385 1225  
james.murray@cbre.com

**Chris Rust**  
Personal Real Estate Corporation  
Vice President  
Brokerage Services  
250 386 0005  
chris.rust@cbre.com

**CBRE**



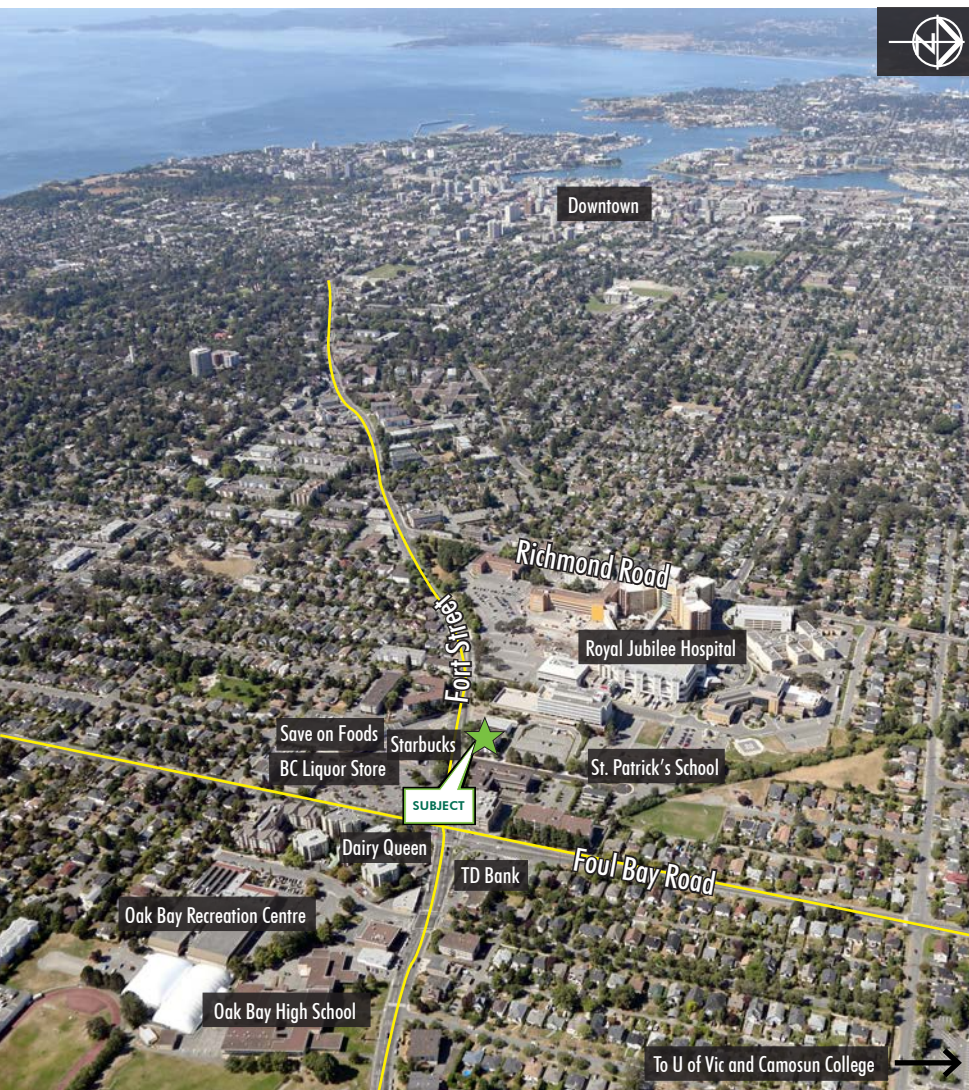
# FOR LEASE

## 1950 FORT STREET

VICTORIA | BRITISH COLUMBIA

### HIGHLIGHTS

- ✓ Ground floor space
- ✓ Excellent exposure
- ✓ Good signage opportunity
- ✓ High profile location in the Fort & Foul Bay shopping area
- ✓ Air conditioned
- ✓ Upgraded entryway
- ✓ On-site parking for customers and staff (at the back of the building)



FOR MORE INFORMATION PLEASE CONTACT:

**James Murray**  
Sales Representative  
Brokerage Services  
250 385 1225  
james.murray@cbre.com

**Chris Rust**  
Personal Real Estate Corporation  
Vice President  
Brokerage Services  
250 386 0005  
chris.rust@cbre.com

CBRE Limited | 1026 Fort Street | Victoria, BC | Tel: 250 386 0000 | [www.cbrevictoria.com](http://www.cbrevictoria.com)

This disclaimer shall apply to CBRE Limited, Real Estate Brokerage, and to all other divisions of the Corporation, to include all employees and independent contractors ("CBRE"). The information set out herein, including, without limitation, any projections, images, opinions, assumptions and estimates obtained from third parties (the "Information") has not been verified by CBRE, and CBRE does not represent, warrant or guarantee the accuracy, correctness and completeness of the Information. CBRE does not accept or assume any responsibility or liability, direct or consequential, for the Information or the recipient's reliance upon the Information. The recipient of the Information should take such steps as the recipient may deem necessary to verify the Information prior to placing any reliance upon the Information. The Information may change and any property described in the Information may be withdrawn from the market at any time without notice or obligation to the recipient from CBRE. CBRE and the CBRE logo are the service marks of CBRE Limited and/or its affiliated or related companies in other countries. All other marks displayed on this document are the property of their respective owners. All Rights Reserved. Mapping Sources: Canadian Mapping Services [canadamapping@cbre.com](mailto:canadamapping@cbre.com); DMIT Spatial, EnviroNics Analytics, Microsoft Bing, Google Earth.

# CBRE