

# FOR SALE

Downtown  
Victoria

Fisherman's  
Wharf

Ontario Street

St Lawrence Street



## 9 Suite Character Building

101 Ontario Street | Victoria, BC

- ▶ 7 One bedroom & 2 bachelor suites
- ▶ 100% occupied
- ▶ Tenants pay for hydro, heat, and hot water
- ▶ On-site parking for 8 vehicles
- ▶ Bike Storage
- ▶ Double pane windows
- ▶ Storage locker for each unit
- ▶ Wired heating and smoke detectors in common areas
- ▶ Building is not heritage
- ▶ Located in historic James Bay

**CBRE**

INVESTMENT PROPERTIES GROUP  
VICTORIA



## The **Opportunity**

The Victoria Investment Properties Group is pleased to present the rare opportunity to acquire a 9 unit character building nestled in James Bay. Built in 1908, this charming care free building spans over 3 stories and has received various updating throughout the years. Most recently, the exterior decks and rear staircase were redone along with the asphalt shingle roof. This efficient building is easy to manage as the windows are all double-pane and the tenants pay for their own hydro, heat and hot water. With an irreplaceable location, this building is a fantastic investment with zero vacancy.



Laundry Room



9 Meters & 1 House



9 Lockers



10 Hot Water Tanks

# The Details

## Civic Address

101 Ontario Street, Victoria, BC

## PID

009-394-974

## Legal Description

Lot 1451 Land District 57

## Land Size

7,200 Sq. Ft.

## Year Built

1908

## Renovations

2017 - Stairs & Decks Redone

## Roof

Asphalt Shingle (2011)

## Heating

Electric Baseboard

## Electric Service

300 amp

## Storage

1 locker per unit

## Laundry

In Building - \$1.25 per load

## Parking

8 Parking Stalls

## Zoning

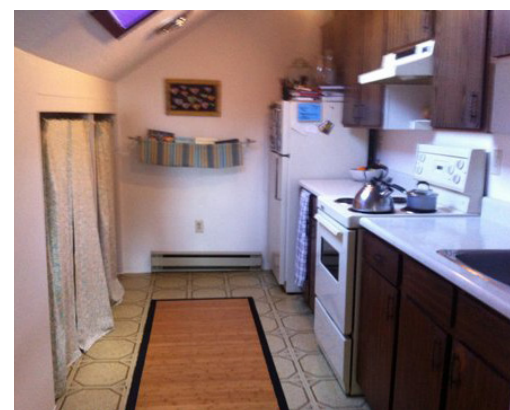
R-2 - Two Family Dwelling District



## The Suite Mix

Bachelor	2
1 Bedroom	7
<b>Total</b>	<b>9 Suites</b>

\*One suite is not licensed



Price: \$2,490,000  
Cap Rate: 3.5%



Saanich

Oak Bay

Downtown Victoria

Parliament Buildings

James Bay Square

Victoria West

Fisherman's Wharf

★ SUBJECT PROPERTY

Dallas Rd

101 Ontario Street is located in James Bay, one of the most sought after neighbourhoods in Victoria. This highly desired location is a walker's paradise, minutes to harbourfronts, beaches, parks, restaurants, and grocery. With beautiful heritage homes on each block and horse drawn carriages, James Bay is a fitting home for tourist attractions like the Ogden Point cruise ship terminal, the Parliament Buildings, Royal BC Museum, and Fisherman's Wharf. An abundance of daily amenities are a short commute, featuring Thrifty Foods, Red Barn Market, Starbucks, Bank of Montreal, BC Liquor and more.

## CONTACT US

**Chris Rust**  
Personal Real Estate Corporation  
Senior Vice President  
Brokerage Services  
250 386 0005  
chris.rust@cbre.com

**Ross Marshall**  
Personal Real Estate Corporation  
Senior Vice President  
Brokerage Services  
250 386 0004  
ross.marshall@cbre.com

www.cbrevictoria.com | CBRE Limited | 1026 Fort Street, Victoria, BC V8V 3K4 | 250 386 0000

This disclaimer shall apply to CBRE Limited, Real Estate Brokerage, and to all other divisions of the Corporation; to include all employees and independent contractors ("CBRE"). The information set out herein, including, without limitation, any projections, images, opinions, assumptions and estimates obtained from third parties (the "Information") has not been verified by CBRE, and CBRE does not represent, warrant or guarantee the accuracy, correctness and completeness of the Information. CBRE does not accept or assume any responsibility or liability, direct or consequential, for the Information or the recipient's reliance upon the Information. The recipient of the Information should take such steps as the recipient may deem necessary to verify the Information prior to placing any reliance upon the Information. The Information may change and any property described in the Information may be withdrawn from the market at any time without notice or obligation to the recipient from CBRE. CBRE and the CBRE logo are the service marks of CBRE Limited and/or its affiliated or related companies in other countries. All other marks displayed on this document are the property of their respective owners. All Rights Reserved. Mapping Sources: Canadian Mapping Services canadamapping@cbre.com; DMIT Spatial, Environics Analytics, Microsoft Bing, Google Earth.



INVESTMENT PROPERTIES GROUP  
VICTORIA