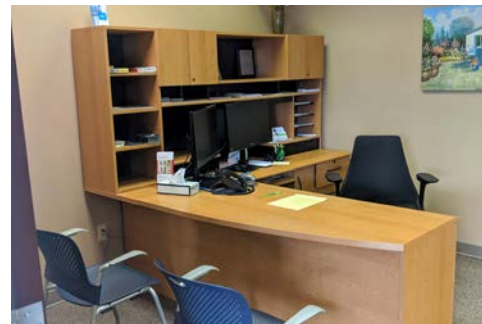


TURN-KEY OFFICE SPACE IN WESTSIDE VILLAGE SHOPPING CENTRE

#120 — 174 WILSON ST | VICTORIA, BC

FOR SUBLEASE



ENQUIRIES

JAMES MURRAY

Sales Representative

Brokerage Services

250 385 1225

james.murray@cbre.com

ROSS MARSHALL

Personal Real Estate Corporation

Senior Vice President | Brokerage Services

250 386 0004

ross.marshall@cbre.com

CBRE

TURN-KEY OFFICE SPACE IN WESTSIDE VILLAGE SHOPPING CENTRE

#120 — 174 WILSON ST | VICTORIA, BC

THE DETAILS

Size: 1,878 sq. ft.
 Sublease term: Until July 30, 2020
 Gross Rate: \$6,500 per Month

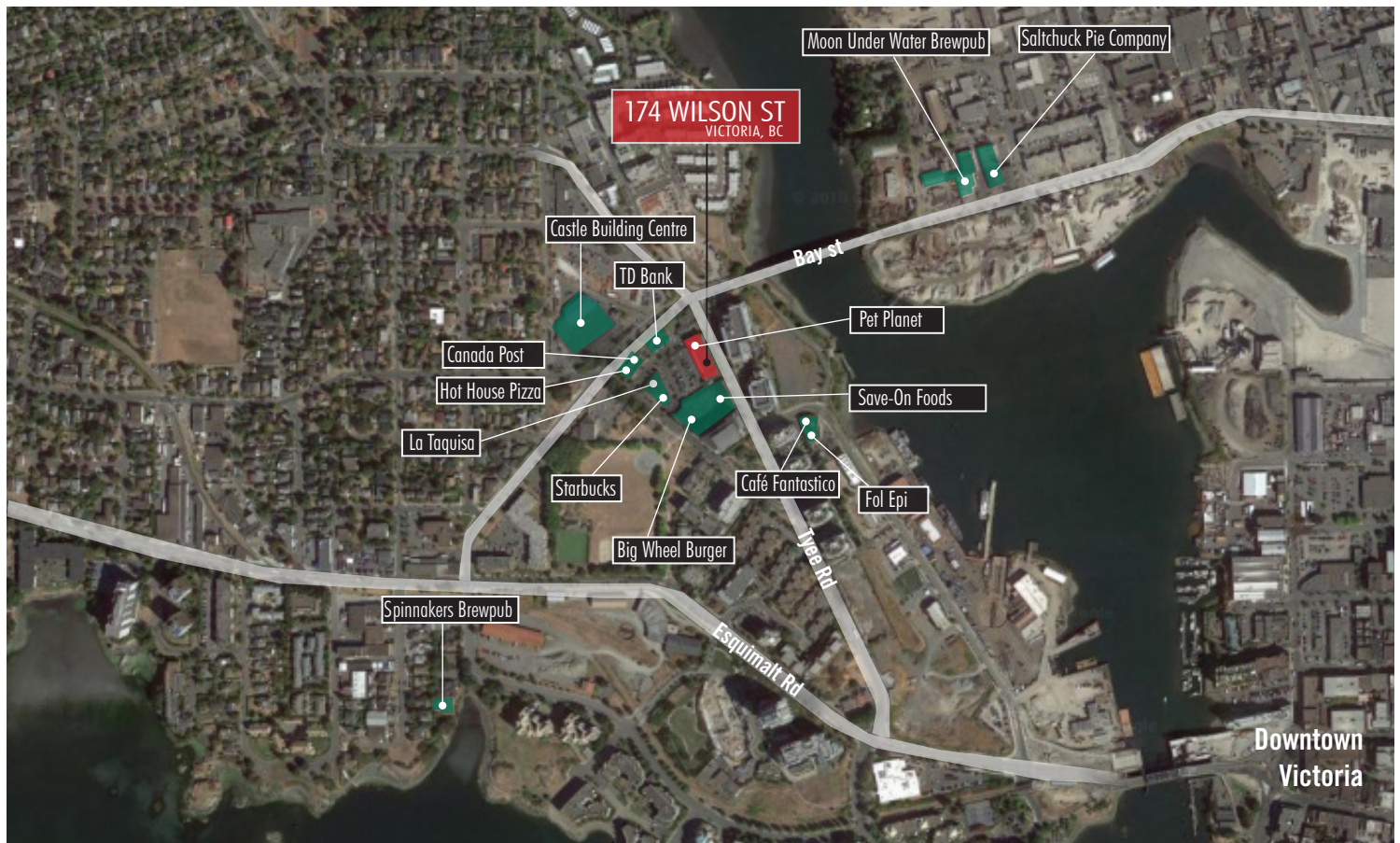
HIGHLIGHTS

- ✓ Turn-key office
- ✓ Prominent signage
- ✓ 11 workstations
- ✓ 3 private offices
- ✓ Kitchenette
- ✓ On-site parking
- ✓ Ample storage
- ✓ Handicap accessible washroom

OPPORTUNITY

This is an opportunity to sublease turn-key office space in Westside Village. As the most popular commercial hub in Vic West, Westside Village benefits from high customer-volume year-round and prominent signage on Bay Street and Tye Road. The available space is best suited for professional services but lends itself to a variety of retail and office uses.

LOCATION MAP



This disclaimer shall apply to CBRE Limited, Real Estate Brokerage, and to all other divisions of the Corporation; to include all employees and independent contractors ("CBRE"). The information set out herein, including, without limitation, any projections, images, opinions, assumptions and estimates obtained from third parties (the "Information") has not been verified by CBRE, and CBRE does not represent, warrant or guarantee the accuracy, correctness and completeness of the Information. CBRE does not accept or assume any responsibility or liability, direct or consequential, for the Information or the recipient's reliance upon the Information. The recipient of the Information should take such steps as the recipient may deem necessary to verify the Information prior to placing any reliance upon the Information. The Information may change and any property described in the Information may be withdrawn from the market at any time without notice or obligation to the recipient from CBRE. CBRE and the CBRE logo are the service marks of CBRE Limited and/or its affiliated or related companies in other countries. All other marks displayed on this document are the property of their respective owners. All Rights Reserved. Mapping Sources: Canadian Mapping Services canadamapping@cbre.com; DMTI Spatial, Environics Analytics, Microsoft Bing, Google Earth.