



Medical/Office Space For Lease



1120 Yates Street
VICTORIA, BRITISH COLUMBIA

611 - 3,403 SF

NET RENT: Starting at \$18.00 PSF
(negotiable)

ADDITIONAL RENT: \$16.73 PSF

CBRE

CONTACT

JAMES MURRAY
SALES REPRESENTATIVE
BROKERAGE SERVICES
250 385 1225
james.murray@cbre.com

VICTORIA PROFESSIONAL BUILDING

1120 Yates St.

VICTORIA, BC

CBRE Victoria is excited to present this opportunity to lease medical/office space in Downtown Victoria's most established medical building, the Victoria Professional Building. The available spaces range from 611 - 3,403 SF, offering a wide variety of options to medical professionals in need of a long-term home.



FOR LEASE



AVAILABLE SPACE:

UNIT 202	935 SF
UNIT 204	828 SF
UNIT 304	716 SF
UNIT 400	1,339 SF
UNIT 401	611 SF
UNIT 403	1,482 SF
UNIT 501	936 SF



AVAILABILITY: IMMEDIATELY



TENANT IMPROVEMENTS: NEGOTIABLE



Unique
Opportunity
to Lease
Medical/Office
Space in
Established
Medical
Building

CONTACT

JAMES MURRAY

250 385 1225

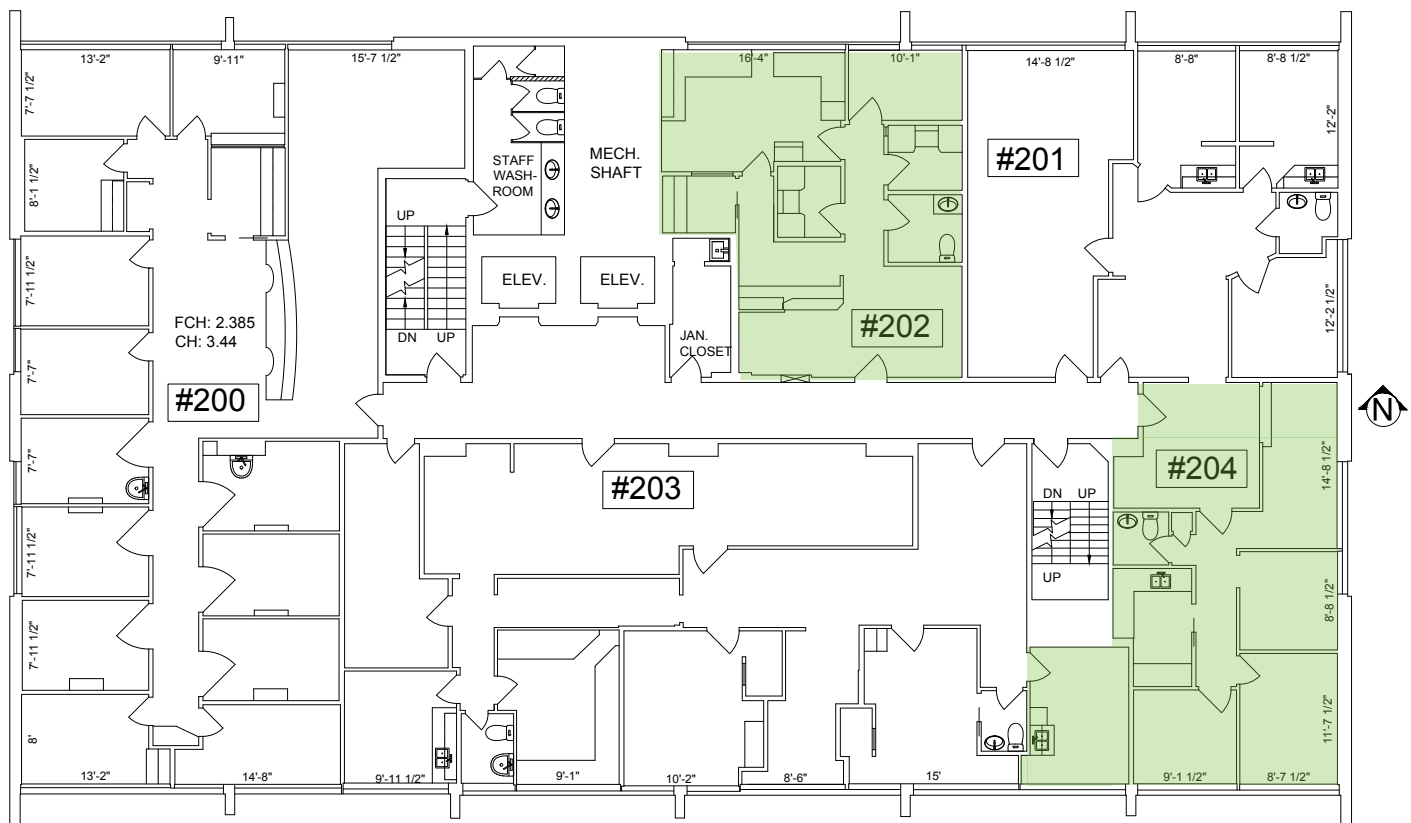
james.murray@cbre.com

AVAILABLE AREA

2ND FLOOR

UNIT 202

935 SF



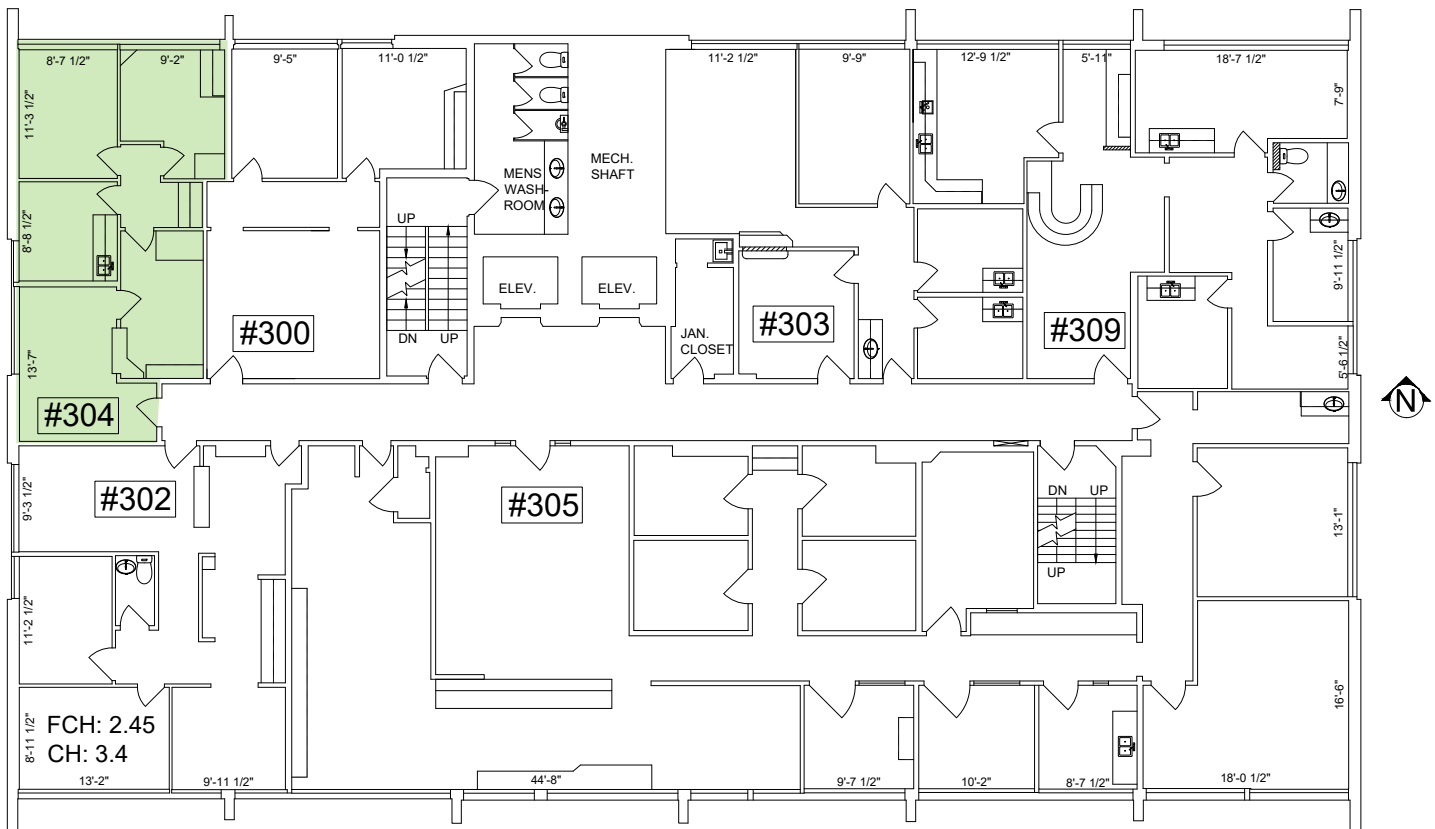
UNIT 204

828 SF

AVAILABLE AREA

3RD FLOOR

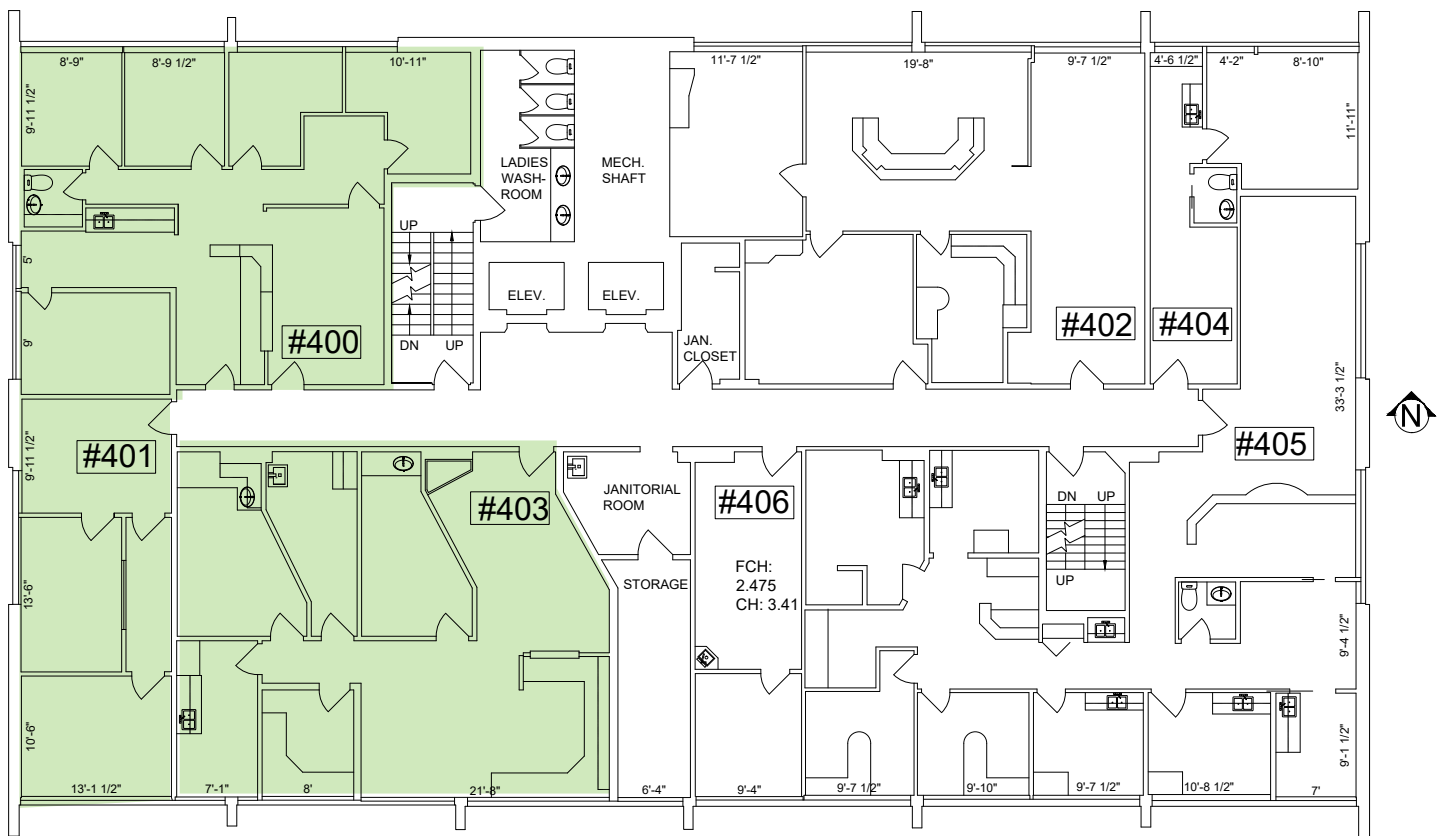
UNIT 304
716 SF



AVAILABLE AREA

4TH FLOOR

UNIT 400
1,339 SF

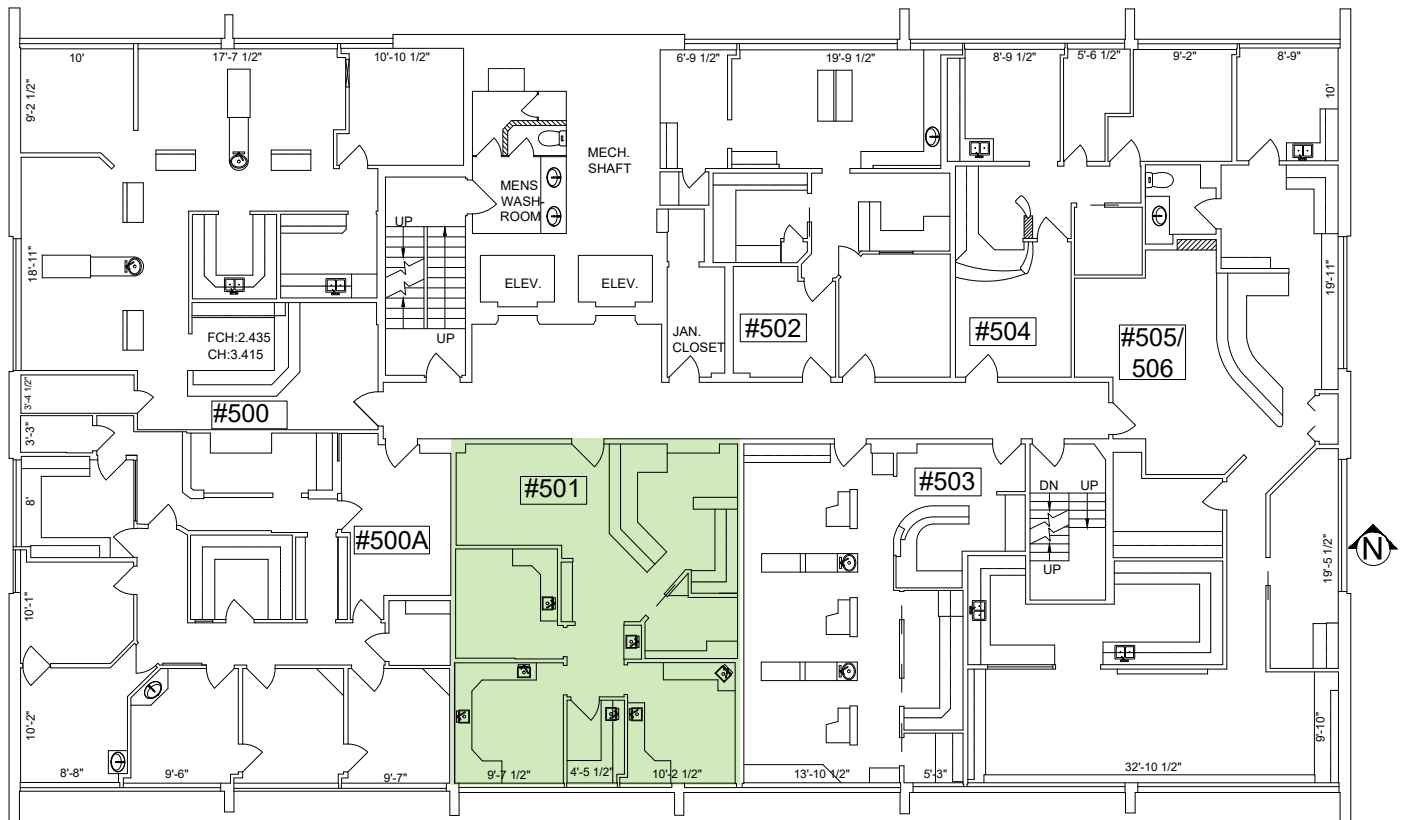


UNIT 401
611 SF

UNIT 403
1,482 SF

AVAILABLE AREA

5TH FLOOR



UNIT 501
936 SF