



Medical/Office Space For Lease



1120 Yates Street

VICTORIA, BRITISH COLUMBIA

478 - 3,403 SF

NET RENT: Starting at \$18.00 PSF
(negotiable)

ADDITIONAL RENT: \$16.73 PSF

CBRE

CONTACT

JAMES MURRAY

SALES REPRESENTATIVE
BROKERAGE SERVICES

250 385 1225

james.murray@cbre.com

VICTORIA PROFESSIONAL BUILDING

1120 Yates St.

VICTORIA, BC

FOR LEASE

CBRE Victoria is excited to present this opportunity to lease medical/office space in Downtown Victoria's most established medical building, the Victoria Professional Building. The available spaces range from 478 - 3,403 SF, offering a wide variety of options to medical professionals in need of a long-term home.



AVAILABLE SPACE:

UNIT 201	1,181 SF
UNIT 202	935 SF
UNIT 204	828 SF
UNIT 304	716 SF
UNIT 400	1,339 SF
UNIT 401	611 SF
UNIT 403	1,482 SF
UNIT 404	478 SF
UNIT 501	936 SF



AVAILABILITY: IMMEDIATELY



TENANT IMPROVEMENTS: NEGOTIABLE



Unique Opportunity to Lease Medical/Office Space in Established Medical Building

CONTACT

JAMES MURRAY

250 385 1225

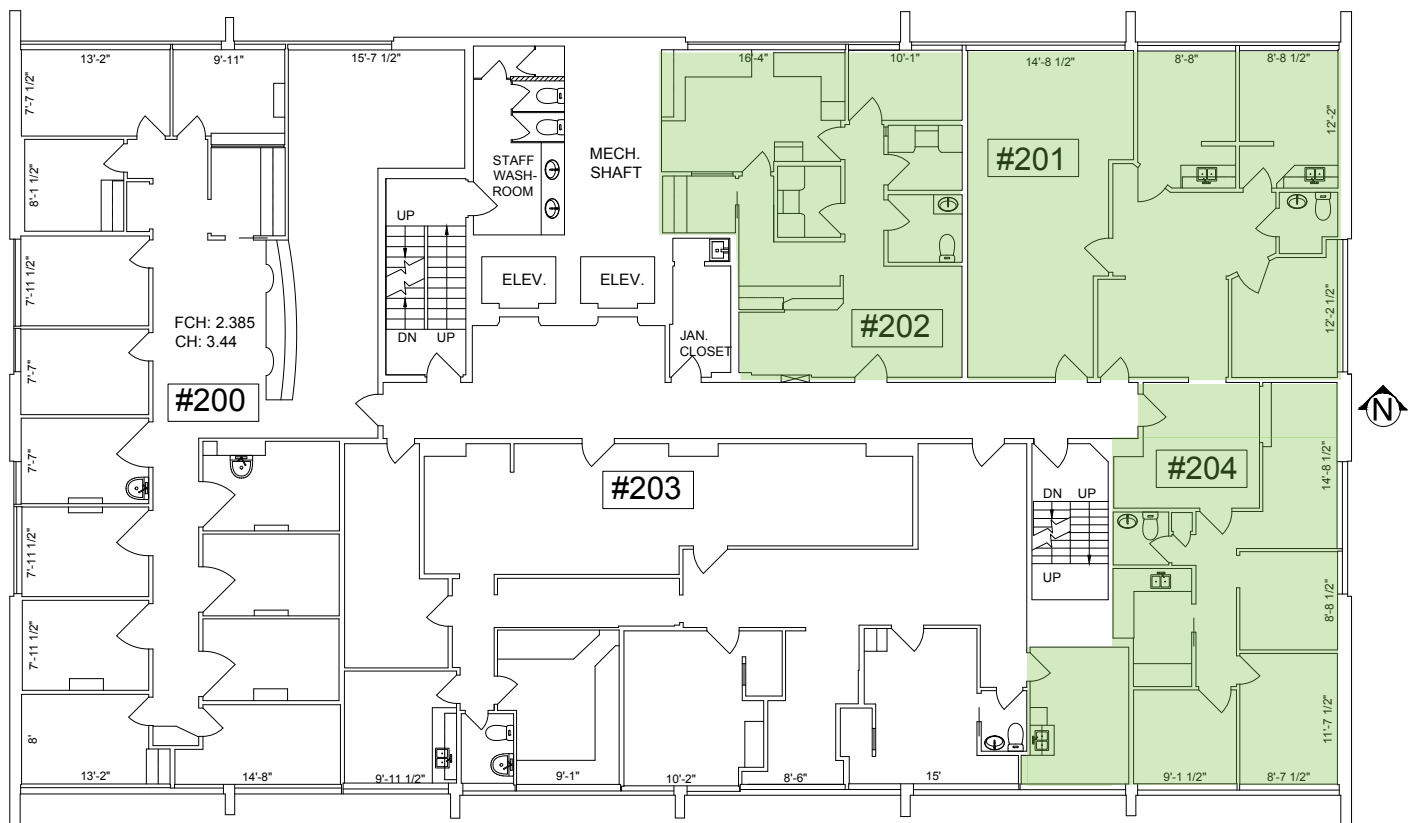
james.murray@cbre.com

AVAILABLE AREA

2ND FLOOR

UNIT 202
935 SF

UNIT 201
1,181 SF



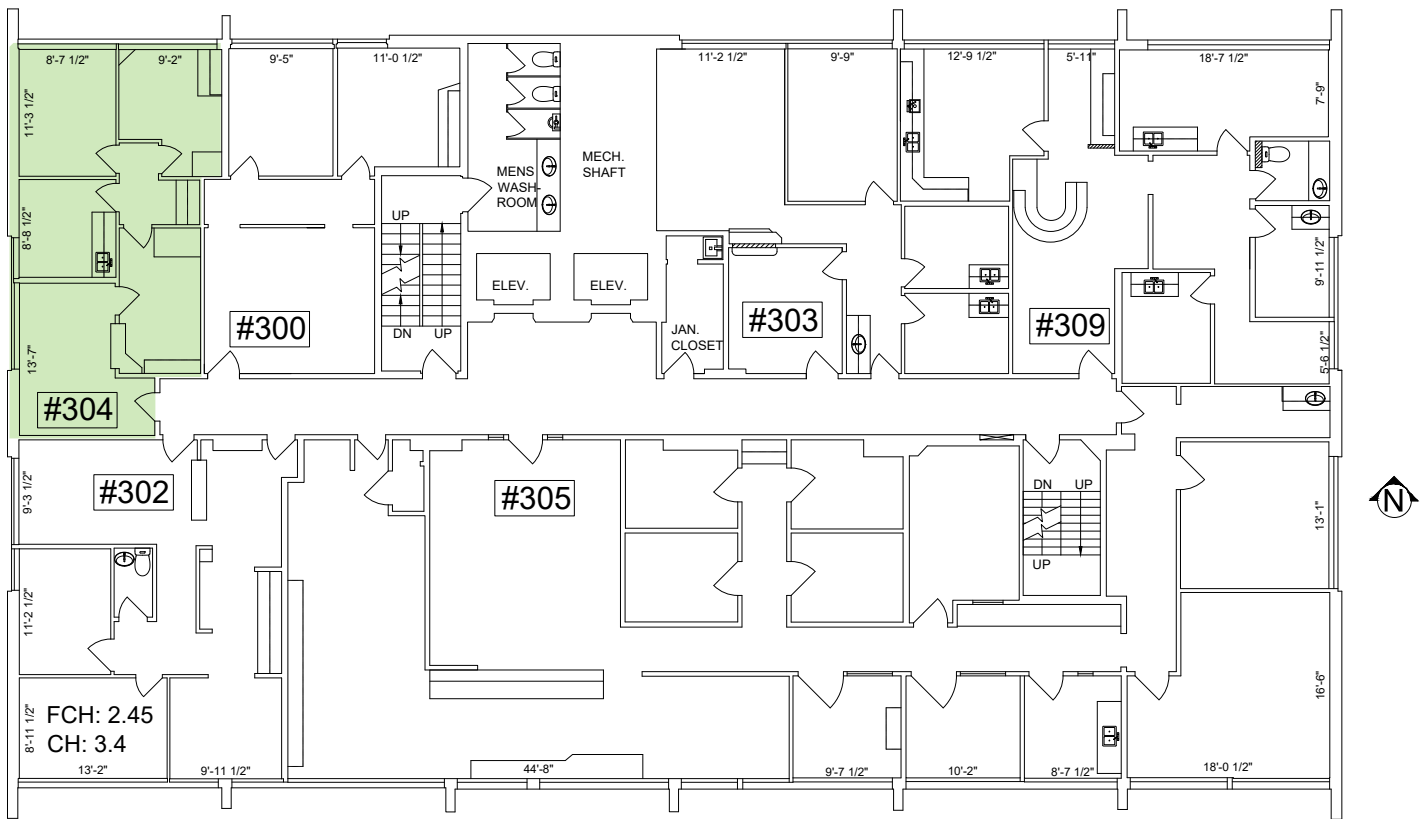
UNIT 204
828 SF

AVAILABLE AREA

3RD FLOOR

UNIT 304

716 SF

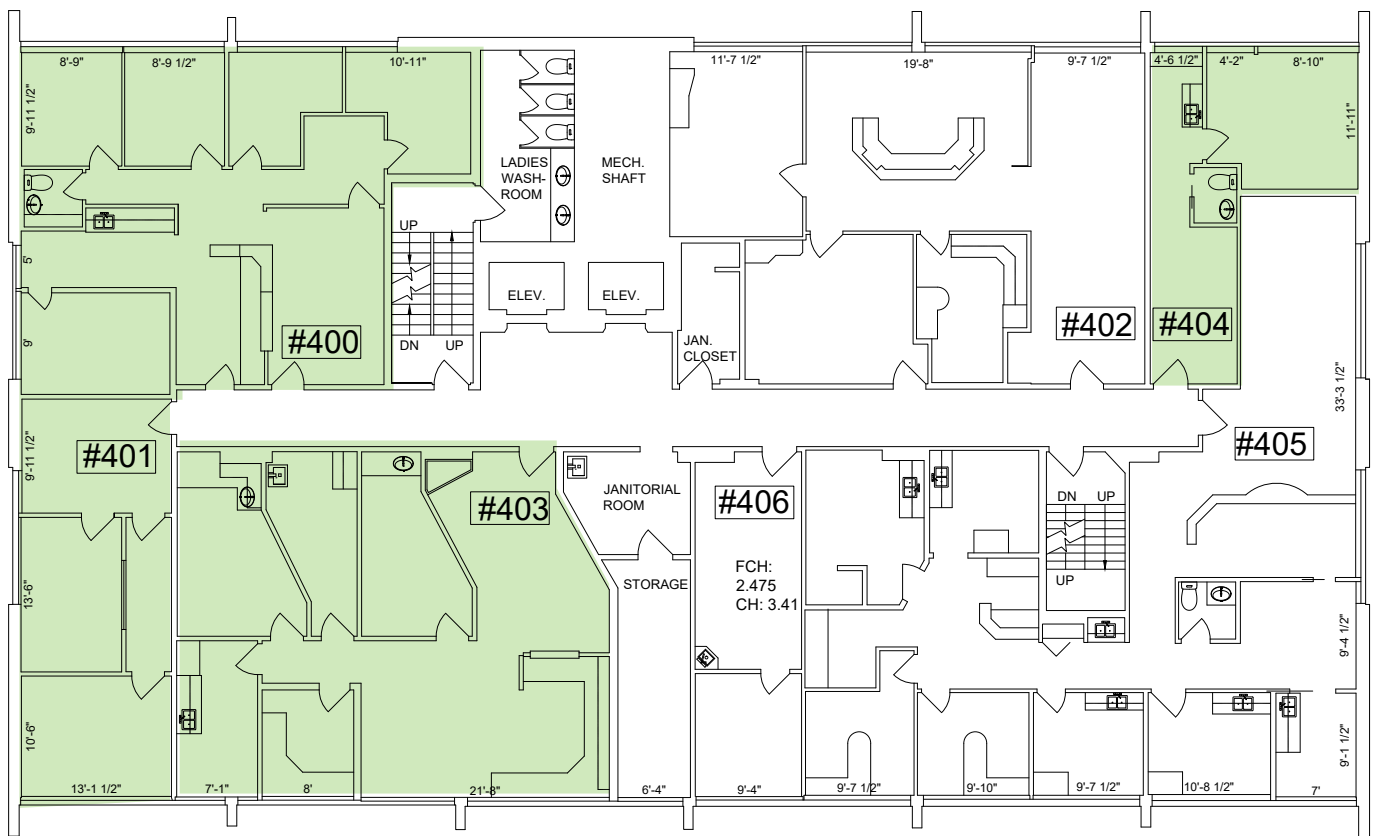


AVAILABLE AREA

4TH FLOOR

UNIT 400
1,339 SF

UNIT 404
478 SF

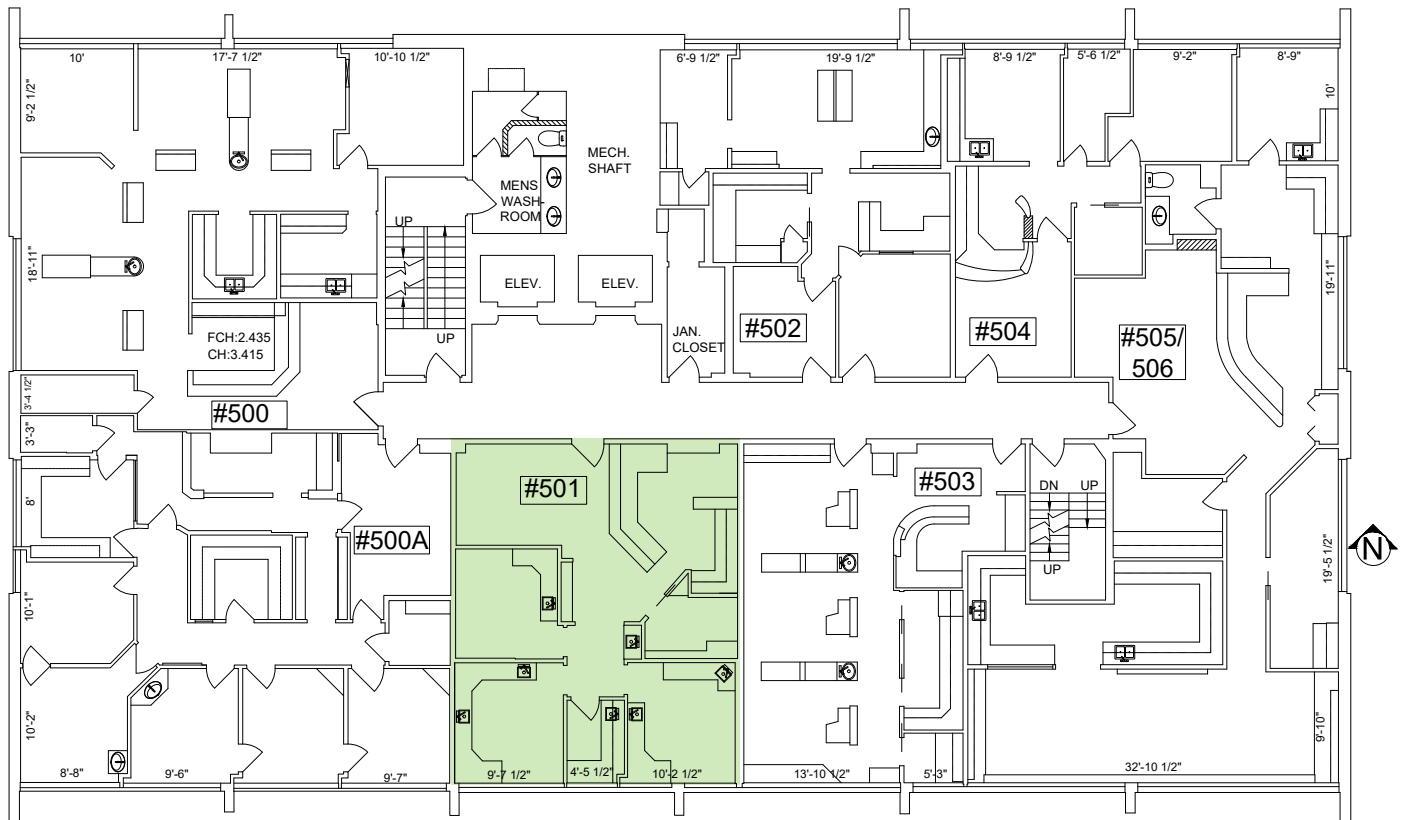


UNIT 401
611 SF

UNIT 403
1,482 SF

AVAILABLE AREA

5TH FLOOR



UNIT 501
936 SF