

# RETAIL SPACE FOR LEASE

STADACONA CENTRE | 1563 PANDORA AVENUE | VICTORIA, BC



## THE DETAILS

- Net Rent: \$20.00 per sq. ft.
- Additional Rent: \$9.63 per sq. ft. (2018 estimate)
- Size: 3,521 sq. ft.
- Available: Immediately

## ENQUIRIES

ROSS MARSHALL  
Personal Real Estate Corporation  
Vice President  
Brokerage Services  
250 386 0004  
[ross.marshall@cbre.com](mailto:ross.marshall@cbre.com)

NATHANIEL SIMPSON  
Sales Associate  
Brokerage Services  
250 386 0001  
[nathaniel.simpson@cbre.com](mailto:nathaniel.simpson@cbre.com)

## HIGHLIGHTS

- ✓ 90' of frontage along Pandora Avenue
- ✓ High-exposure corner
- ✓ proximity to affluent neighbourhoods
- ✓ Ample customer parking

JAMES MURRAY  
Sales Representative  
Brokerage Services  
250 385 1225  
[james.murray@cbre.com](mailto:james.murray@cbre.com)

**CBRE**

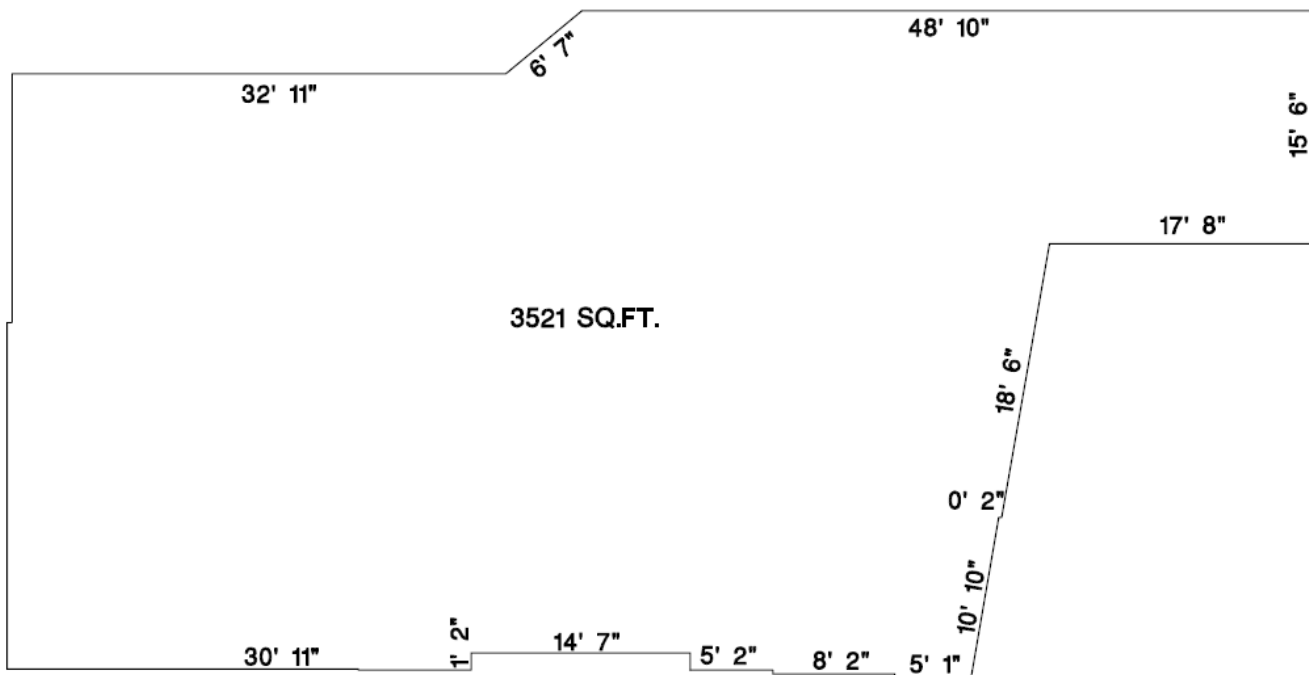
# RETAIL SPACE FOR LEASE

STADACONA CENTRE | 1563 PANDORA AVENUE | VICTORIA, BC

## OPPORTUNITY

CBRE Limited is pleased to present the opportunity to occupy prime retail space at Stadacona Centre. The subject property is centrally located between two main thoroughfares, minutes from Downtown Victoria and some of the city's most affluent neighbourhoods: Oak Bay, Rockland, and Fernwood. Situated directly across from the beautiful Stadacona Park, many successful businesses have made their home in Stadacona Centre including The Tartan Toque, Origin Bakery, Subway, Shine Café, and more.

## FLOORPLAN



## ENQUIRIES

ROSS MARSHALL  
Personal Real Estate Corporation  
Vice President  
Brokerage Services  
250 386 0004  
ross.marshall@cbre.com

NATHANIEL SIMPSON  
Sales Associate  
Brokerage Services  
250 386 0001  
nathaniel.simpson@cbre.com

JAMES MURRAY  
Sales Representative  
Brokerage Services  
250 385 1225  
james.murray@cbre.com

This disclaimer shall apply to CBRE Limited, Real Estate Brokerage, and to all other divisions of the Corporation; to include all employees and independent contractors ("CBRE"). The information set out herein, including, without limitation, any projections, images, opinions, assumptions and estimates obtained from third parties (the "Information") has not been verified by CBRE, and CBRE does not represent, warrant or guarantee the accuracy, correctness and completeness of the Information. CBRE does not accept or assume any responsibility or liability, direct or consequential, for the Information or the recipient's reliance upon the Information. The recipient of the Information should take such steps as the recipient may deem necessary to verify the Information prior to placing any reliance upon the Information. The Information may change and any property described in the Information may be withdrawn from the market at any time without notice or obligation to the recipient from CBRE. CBRE and the CBRE logo are the service marks of CBRE Limited and/or its affiliated or related companies in other countries. All other marks displayed on this document are the property of their respective owners. All Rights Reserved. Mapping Sources: Canadian Mapping Services canadamapping@cbre.com; DMTI Spatial, Envisonics Analytics, Microsoft Bing, Google Earth.