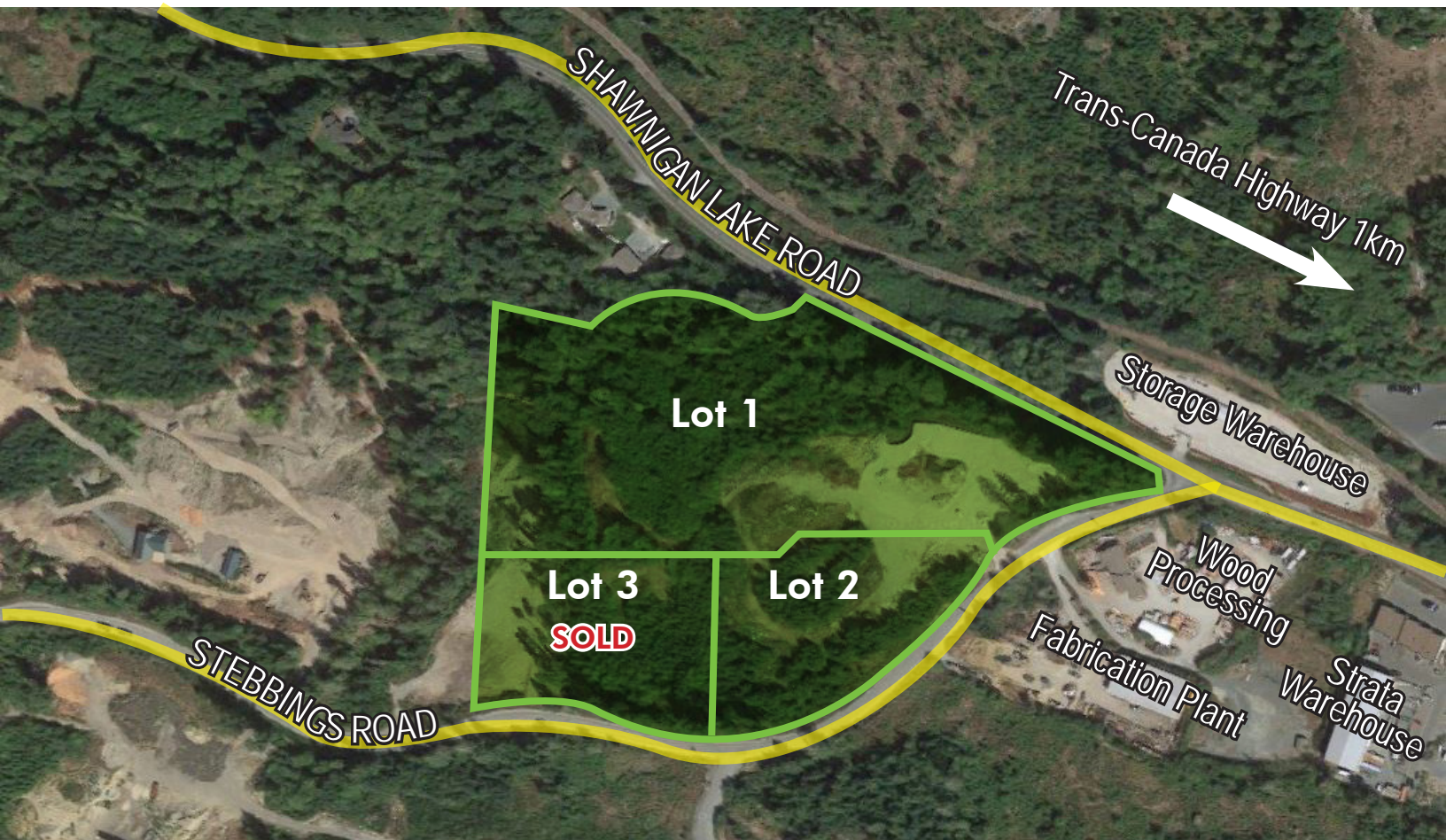


# FOR SALE: INDUSTRIAL LOTS FROM 2.47 - 12.4 ACRES MALAHAT, BRITISH COLUMBIA

## HIGHLIGHTS

- ✓ Flexible zoning allows for a wide variety of uses
- ✓ Ideal for owner-user or developer
- ✓ Level access, easy build, gravel base
- ✓ Located 1 km from the Trans-Canada Highway
- ✓ Trans-Canada Highway recently improved
- ✓ Proximity to Langford (14 min), Victoria, Duncan and Nanaimo



## FOR INFORMATION CONTACT

### CHRIS RUST Personal Real Estate Corporation

SENIOR VICE PRESIDENT  
BROKERAGE SERVICES  
chris.rust@cbre.com  
250 386 0005

### ROSS MARSHALL Personal Real Estate Corporation

SENIOR VICE PRESIDENT  
BROKERAGE SERVICES  
ross.marshall@cbre.com  
250 386 0004

# INDUSTRIAL LOTS FROM 2.47 TO 12.4 ACRES

MALAHAT, BRITISH COLUMBIA

## THE OFFERING

CBRE Victoria is pleased to present the rare opportunity to acquire industrial lots with flexible zoning and excellent access to both Victoria and up island via the Trans-Canada Highway. The site is a preliminary lot approved industrial subdivision in the Malahat Industrial area. This is an ideal opportunity for an owner-user and/or developer. The proposed individual lots range from approximately 2.47 to 12.4 acres and are zoned I-5 Eco-Industrial.

## EXECUTIVE SUMMARY

Legal Description: Subdivided Lot 2 Plan VIP75146  
District Lot 132 Land District 29

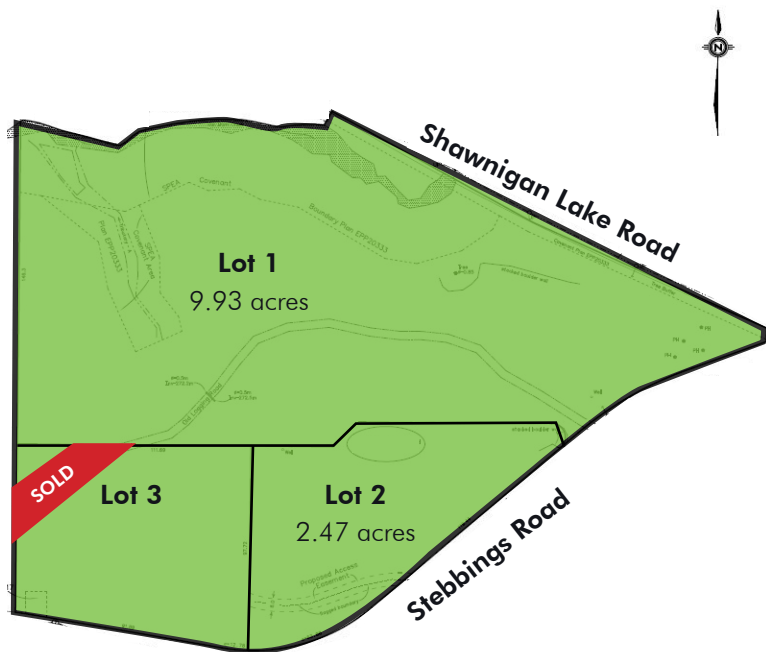
Site Size: 2.47/9.93 Acres

Taxes (2019): \$24,269 (Entire Property)

Water: Approved Drilled Wells

Waste: Approved for Septic

Hydro: 3 Phase Power Available



## ZONING

### I-5 Zone - Eco-Industrial Zone

Permitted uses include but are not limited:

- Manufacturing, wood products, pre-fab homes
- Industrial processing, manufacturing
- Boat building, repair & storage;
- Building supplies, sale & storage;
- Cannabis-related business, production and storefront retailing;
- Equipment repair, sales, storage & rental;
- Food processing;
- Industrial processing;
- Recycling facility for bottles, wood, metal and or paper
- Warehousing, mini-warehousing freight handling and storage;
- Micro brewing outlet;
- Restaurant;
- Office, retail sales, accessory to a principal use;
- One single-family dwelling per lot

## LOT PRICES

Lot 1 **\$2,200,000**

Lot 2 **\$875,000**

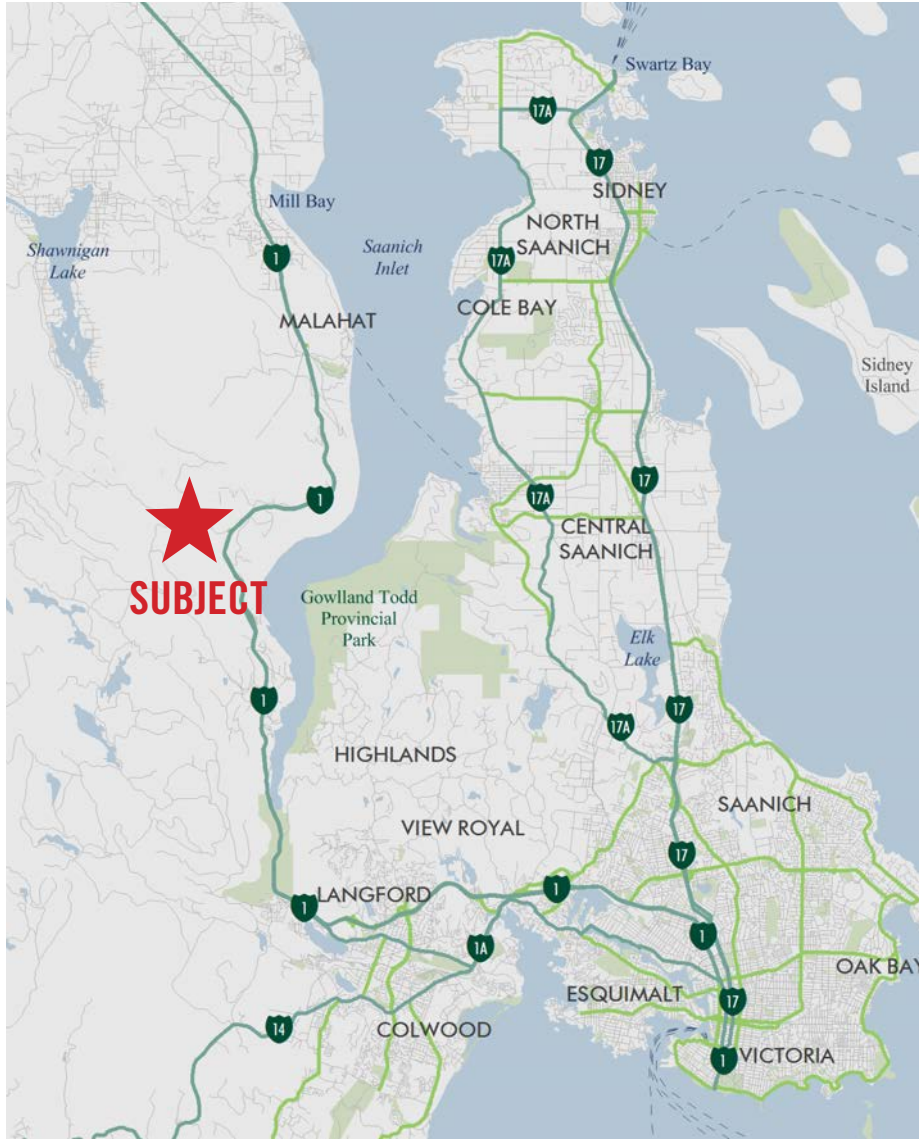
Lot 3 **SOLD**



# INDUSTRIAL LOTS FROM 2.47 TO 12.4 ACRES

MALAHAT, BRITISH COLUMBIA

## LOCATION



## DRIVE TIMES

To Downtown Victoria	30km	25 Minutes
To Langford	15 km	14 Minutes
To Duncan	34 km	28 Minutes
To Nanaimo	84 km	70 Minutes



## FOR INFORMATION CONTACT

**CHRIS RUST**  
Personal Real Estate Corporation  
SENIOR VICE PRESIDENT  
BROKERAGE SERVICES  
chris.rust@cbre.com  
250 386 0005

**ROSS MARSHALL**  
Personal Real Estate Corporation  
SENIOR VICE PRESIDENT  
BROKERAGE SERVICES  
ross.marshall@cbre.com  
250 386 0004

This disclaimer shall apply to CBRE Limited, Real Estate Brokerage, and to all other divisions of the Corporation: to include all employees and independent contractors ("CBRE"). The information set out herein, including, without limitation, any projections, images, opinions, assumptions and estimates obtained from third parties (the "Information") has not been verified by CBRE, and CBRE does not represent, warrant or guarantee the accuracy, correctness and completeness of the Information. CBRE does not accept or assume any responsibility or liability, direct or consequential, for the Information or the recipient's reliance upon the Information. The recipient of the Information should take such steps as the recipient may deem necessary to verify the Information prior to placing any reliance upon the Information. The Information may change and any property described in the Information may be withdrawn from the market at any time without notice or obligation to the recipient from CBRE. CBRE and the CBRE logo are the service marks of CBRE Limited and/or its affiliated or related companies in other countries. All other marks displayed on this document are the property of their respective owners. All Rights Reserved. Mapping Sources: Canadian Mapping Services canadamapping@cbre.com; DMTI Spatial, Environics Analytics, Microsoft Bing, Google Earth.