

# FOR SALE

## 743 ACRES OF LAND WITH SPECTACULAR VIEWS

### THE OPPORTUNITY:

CBRE is pleased to present the opportunity to acquire approximately 743 acres of picturesque West Coast land with unparalleled views of the Juan de Fuca Strait and Olympic Mountains. The Jordan River flows through the centre of the property creating a beautiful valley with rugged mountains on either side. World class salmon fishing, surfing, hiking, and hunting has made the area a popular destination for outdoor enthusiasts.

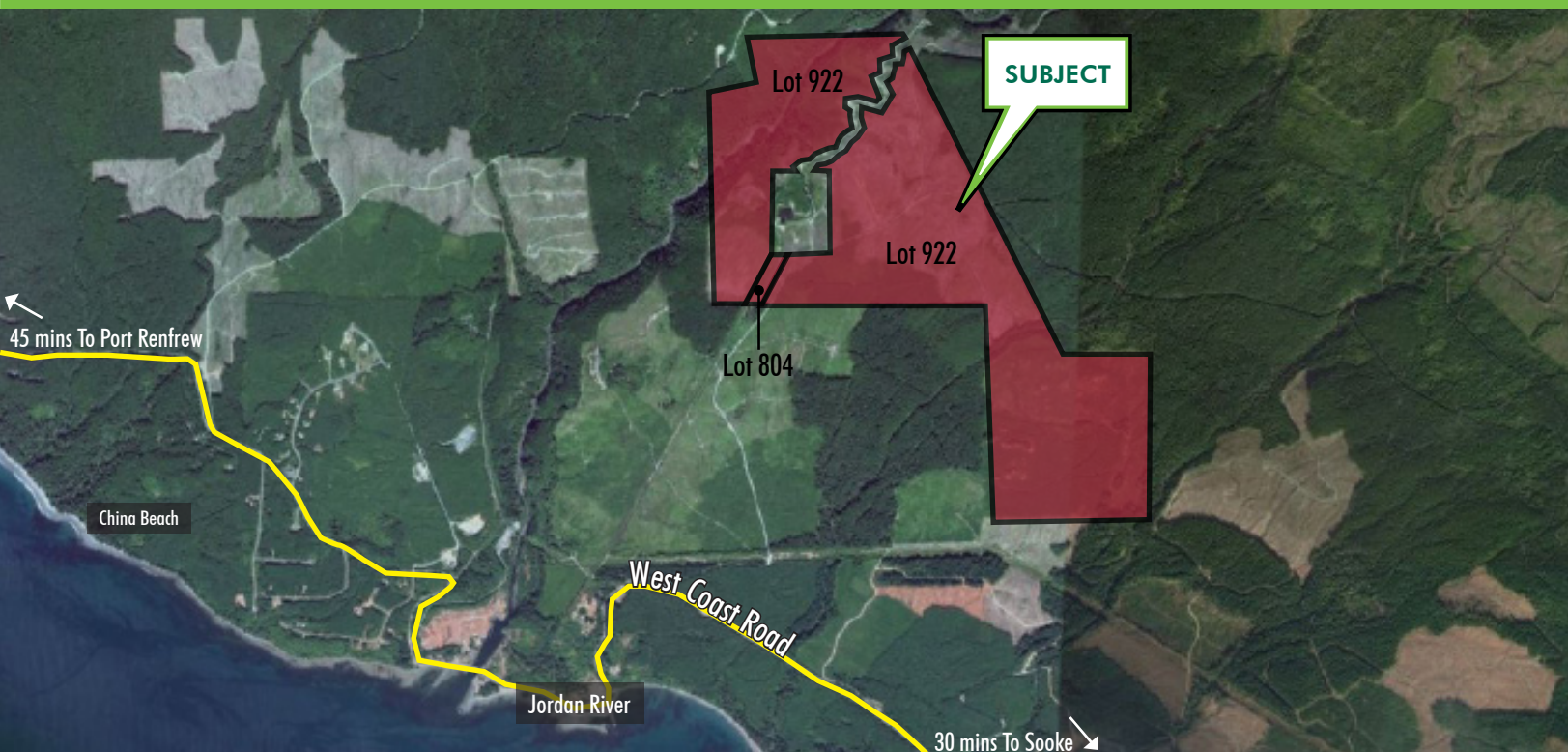
### HIGHLIGHTS:

- ✓ 743 acres of land with stunning ocean and mountain views
- ✓ Overlooking the Juan de Fuca Strait
- ✓ Access from an all season gravel road network
- ✓ Rock quarry with a significant volume of blasted rock
- ✓ Power line through the property and a Hydro drop is available



## LOT 922 RENFREW DISTRICT

PORT RENFREW, BRITISH COLUMBIA



FOR MORE INFORMATION PLEASE CONTACT:

**Ross Marshall**  
Personal Real Estate Corporation  
Vice President  
Brokerage Services  
250 386 0004  
ross.marshall@cbre.com

**Chris Rust**  
Personal Real Estate Corporation  
Vice President  
Brokerage Services  
250 386 0005  
chris.rust@cbre.com

**CBRE**

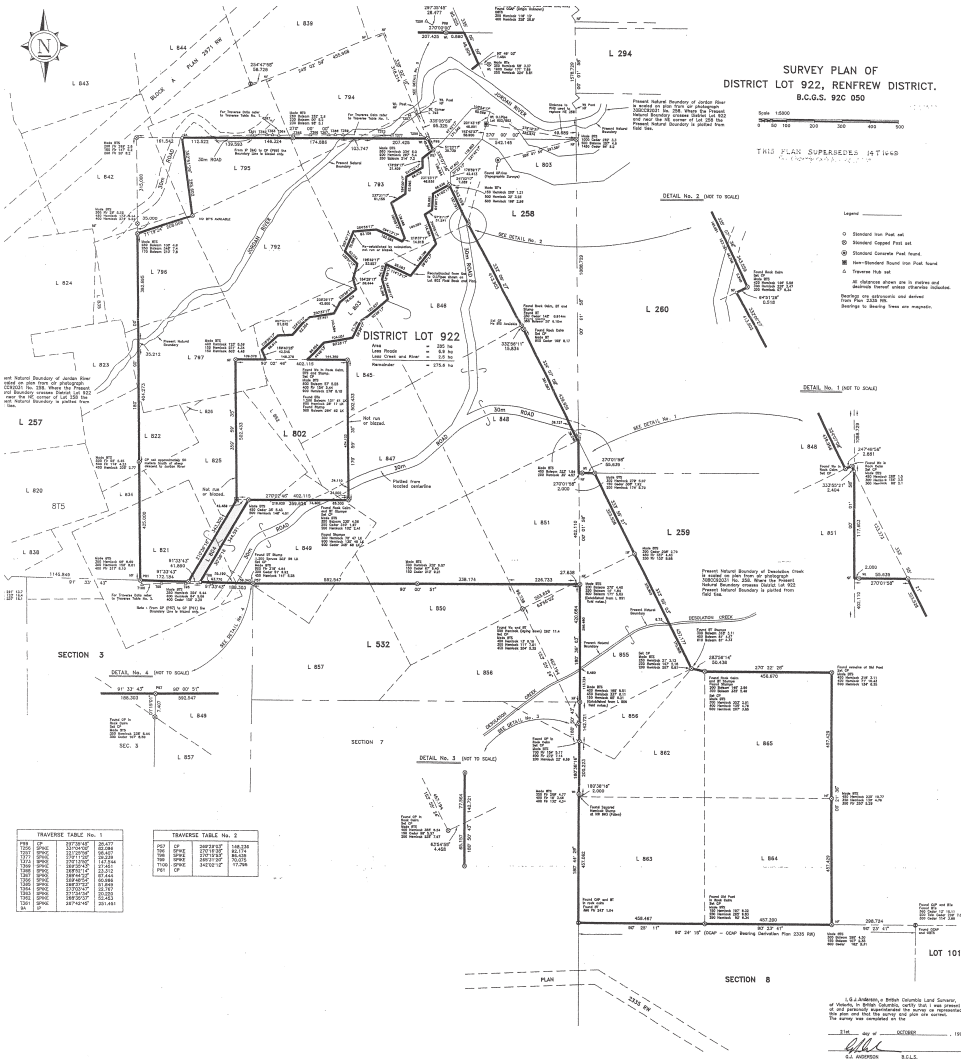


# FOR SALE

## 743 ACRES OF LAND WITH SPECTACULAR VIEWS

JORDAN RIVER | BRITISH COLUMBIA

### SITE PLAN:



### PROPERTY PROFILE

**LEGAL DESCRIPTION:** District Lot 922 Renfrew District & District Lot 804 Renfrew District

**PROPERTY ID:** 023-970-243 & 009-594-248

**SITE SIZE:** 743 acres

**ZONING:** Rural Resource Land

**PROPERTY TAXES:** \$8,414 (2018)

**PRICE:** **\$ 1,500,000**



Pristine Wilderness



Ocean and Mountain Views



Blasted Rock Quarry

# FOR SALE

## 743 ACRES OF LAND WITH SPECTACULAR VIEWS

JORDAN RIVER | BRITISH COLUMBIA

### THE LOCATION:

The property is located in Jordan River, a recreational hub on the West side of Vancouver Island. The town is 30 minutes North West of the City of Sooke and a 70 minute drive from Victoria. Locals and visitors benefit from the area's natural beauty, with an endless amount outdoor activity including hiking, camping, fishing and kayaking. Lot 922 is located just half a kilometer off the West Coast Highway and can easily be accessed by an all season gravel road.



Jordan River Beach  
just minutes away



Abundant Wildlife



## PRICE: \$ 1,500,000

FOR MORE INFORMATION PLEASE CONTACT:

**Ross Marshall**  
Personal Real Estate Corporation  
Vice President  
Brokerage Services  
250 386 0004  
ross.marshall@cbre.com

**Chris Rust**  
Personal Real Estate Corporation  
Vice President  
Brokerage Services  
250 386 0005  
chris.rust@cbre.com



Outdoor Sports

CBRE Limited | 1026 Fort Street | Victoria, BC | Tel: 250 386 0000 | [www.cbrevictoria.com](http://www.cbrevictoria.com)

This disclaimer shall apply to CBRE Limited, Real Estate Brokerage, and to all other divisions of the Corporation; to include all employees and independent contractors ("CBRE"). The information set out herein, including, without limitation, any projections, images, opinions, assumptions and estimates obtained from third parties (the "Information") has not been verified by CBRE, and CBRE does not represent, warrant or guarantee the accuracy, correctness and completeness of the Information. CBRE does not accept or assume any responsibility or liability, direct or consequential, for the Information or the recipient's reliance upon the Information. The recipient of the Information should take such steps as the recipient may deem necessary to verify the Information prior to placing any reliance upon the Information. The Information may change and any property described in the Information may be withdrawn from the market at any time without notice or obligation to the recipient from CBRE. CBRE and the CBRE logo are the service marks of CBRE Limited and/or its affiliated or related companies in other countries. All other marks displayed on this document are the property of their respective owners. All Rights Reserved. Mapping Sources: Canadian Mapping Services [canadamapping@cbre.com](mailto:canadamapping@cbre.com); DMTI Spatial, Environics Analytics, Microsoft Bing, Google Earth.

# CBRE