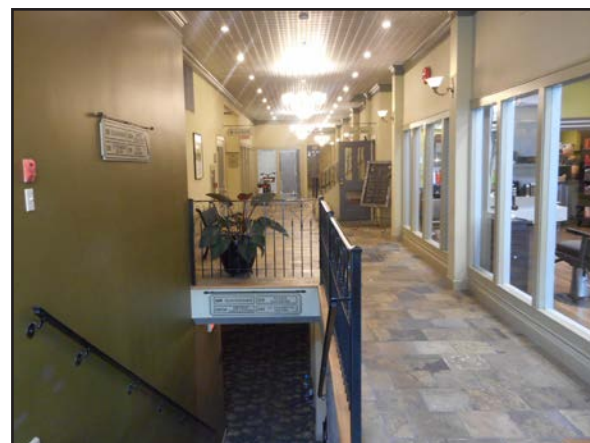


OFFICE SPACE FOR LEASE

MAYNARD COURT

733 JOHNSON STREET | VICTORIA, BC



STRATEGIC LOCATION

Maynard Court is located in the heart of downtown Victoria on Johnson Street, halfway between Douglas and Blanshard Streets and fronted by Odeon Alley. It is a key location in the Central Business District and steps away from the Lower Johnson Shopping District. This property is surrounded by character small businesses and contemporary shops. It is also home to some of Victoria's most popular boutiques, restaurants, and fashion retailers.

LEASING ENQUIRIES

Ross Marshall
Personal Real Estate Corporation
Senior Vice President
Brokerage Services
ross.marshall@cbre.com
250 386 0004

Nathaniel Simpson
Sales Associate
Brokerage Services
nathaniel.simpson@cbre.com
250 386 0001

James Murray
Sales Representative
Brokerage Services
james.murray@cbre.com
250 385 1225

LEASING ENQUIRIES

Ross Marshall
Personal Real Estate Corporation
Senior Vice President
Brokerage Services
ross.marshall@cbre.com
250 386 0004

Nathaniel Simpson
Sales Associate
Brokerage Services
nathaniel.simpson@cbre.com
250 386 0001

James Murray
Sales Representative
Brokerage Services
james.murray@cbre.com
250 385 1225

MAYNARD COURT HIGHLIGHTS

- Unique building architecture
- Exquisite building entryway
- Well-managed and fully occupied
- Fully air-conditioned
- Elevator serviced
- Steps from a variety of amenities

SUITE 205	
Size:	1,155 sq. ft.
Net Rent:	\$16.00 per sq. ft.
Additional Rent:	\$10.25 per sq. ft.
Available:	June 1, 2019

SUITE 302	
Size:	2,056 sq. ft.
Net Rent:	\$16.00 per sq. ft.
Additional Rent:	\$10.25 per sq. ft.
Available:	Immediately

FEATURES

Suite 205

- Ample natural light
- Kitchenette
- 3 Private offices
- Open work space

FEATURES

Suite 302

- Kitchenette
- Semi-private patio
- Private washroom
- Ample natural light



This disclaimer shall apply to CBRE Limited, Real Estate Brokerage, and to all other divisions of the Corporation; to include all employees and independent contractors ("CBRE"). The information set out herein, including, without limitation, any projections, images, opinions, assumptions and estimates obtained from third parties (the "Information") has not been verified by CBRE, and CBRE does not represent, warrant or guarantee the accuracy, correctness and completeness of the Information. CBRE does not accept or assume any responsibility or liability, direct or consequential, for the Information or the recipient's reliance upon the Information. The recipient of the Information should take such steps as the recipient may deem necessary to verify the Information prior to placing any reliance upon the Information. The Information may change and any property described in the Information may be withdrawn from the market at any time without notice or obligation to the recipient from CBRE. CBRE and the CBRE logo are the service marks of CBRE Limited and/or its affiliated or related companies in other countries. All other marks displayed on this document are the property of their respective owners. All Rights Reserved.

Mapping Sources: Canadian Mapping Services canadamapping@cbre.com; DMTI Spatial, EnviroNics Analytics, Microsoft Bing, Google Earth.

CBRE