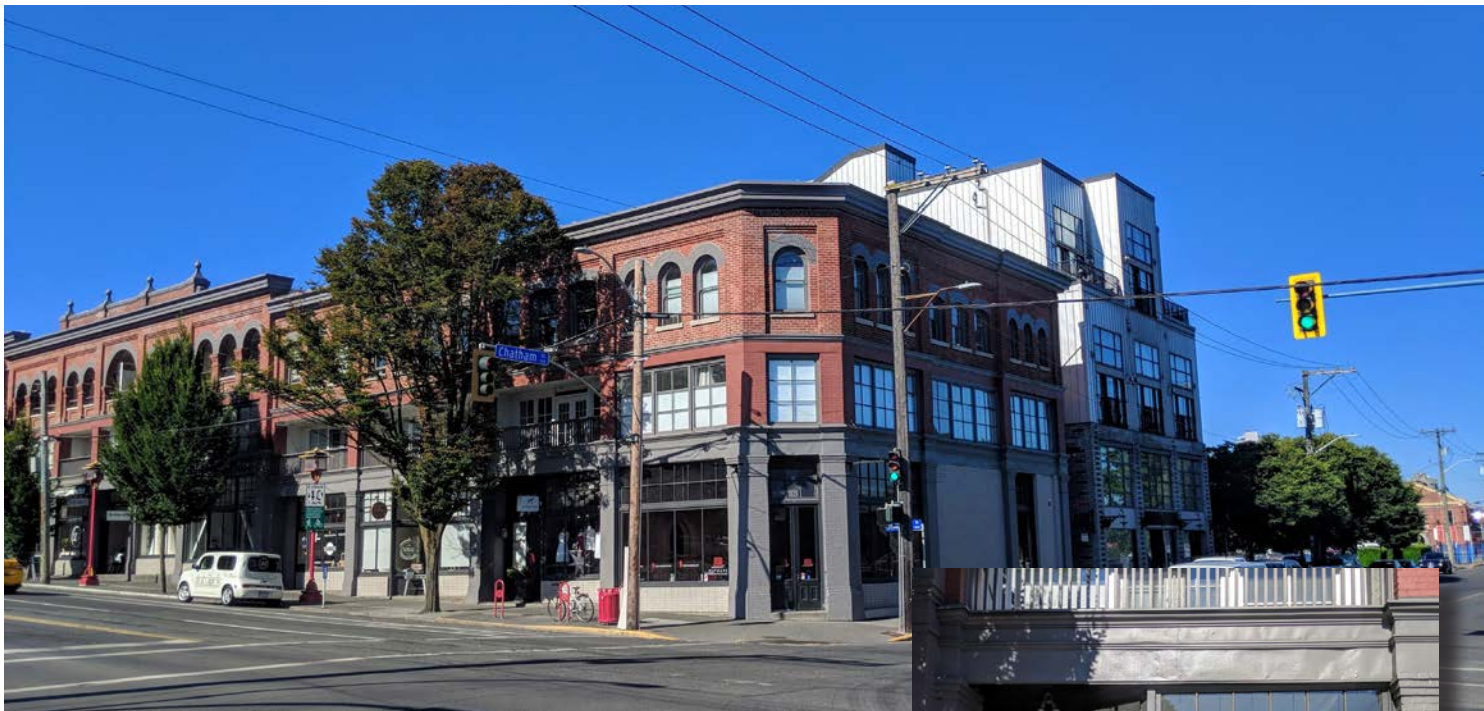


# FOR LEASE: RETAIL SPACE IN ICONIC BUILDING

1820 GOVERNMENT STREET VICTORIA | BRITISH COLUMBIA



## HIGHLIGHTS

- ✓ Prime Government Street location
- ✓ Diverse retail tenant mix
- ✓ Abundance of natural light
- ✓ Floor to ceiling windows
- ✓ Superb signage opportunities
- ✓ Unique interior finishes
- ✓ Back delivery area
- ✓ 800 sq. ft. basement included



## ZONING: OTD-1, Old Town District

Uses include but are not limited to:

Assembly, retail, office, food & beverage, financial service, personal service, studio, equipment rental

**AVAILABLE:** Immediately

**RENTABLE AREA:** Main Floor 950 sq. ft.  
Basement + 800 sq. ft.  
Total: 1,750 sq. ft.

**LEASE RATE:** \$29.00 per sq. ft. (on main floor area only)  
**\*OP COSTS & TAXES:** \$12.50 per sq. ft. (Estimate)

## FOR MORE INFORMATION PLEASE CONTACT:

**Ross Marshall**  
Personal Real Estate Corporation

Senior Vice President  
Brokerage Services  
250 386 0004  
ross.marshall@cbre.com

**Nathaniel Simpson**

Sales Associate  
Brokerage Services  
250 386 0001  
nathaniel.simpson@cbre.com

**CBRE**



# FOR LEASE: RETAIL SPACE IN ICONIC BUILDING

1820 GOVERNMENT STREET VICTORIA | BRITISH COLUMBIA

## OPPORTUNITY

Located on Government Street, the subject property is a prominent fixture of Downtown Victoria's Design District. Bordering Chinatown, 1820 Government benefits from high pedestrian and vehicle traffic from locals and tourists alike, who come to view the historic architecture, shop at a variety of unique retail outlets, and sample the many cafes and restaurants in the neighbourhood.



## LOCATION

The subject property is located at a prime location on Government Street, in an area that has recently emerged as Victoria's "design district", with many home furnishing and interior design outlets. The subject property is less than a 5 minute walk from Victoria's inner harbour and downtown core.

## FOR MORE INFORMATION PLEASE CONTACT:

**Ross Marshall**  
Personal Real Estate Corporation  
Vice President  
Brokerage Services  
250 386 0004  
ross.marshall@cbre.com

**Nathaniel Simpson**  
Sales Associate  
Brokerage Services  
250 386 0001  
nathaniel.simpson@cbre.com



CBRE Limited | 1026 Fort Street | Victoria, BC | Tel: 250 386 0000 | [www.cbre.ca](http://www.cbre.ca) | [www.cbrevictoria.com](http://www.cbrevictoria.com)

This disclaimer shall apply to CBRE Limited, Real Estate Brokerage, and to all other divisions of the Corporation; to include all employees and independent contractors ("CBRE"). The information set out herein, including, without limitation, any projections, images, opinions, assumptions and estimates obtained from third parties (the "Information") has not been verified by CBRE, and CBRE does not represent, warrant or guarantee the accuracy, correctness and completeness of the Information. CBRE does not accept or assume any responsibility or liability, direct or consequential, for the Information or the recipient's reliance upon the Information. The recipient of the Information should take such steps as the recipient may deem necessary to verify the Information prior to placing any reliance upon the Information. The Information may change and any property described in the Information may be withdrawn from the market at any time without notice or obligation to the recipient from CBRE. CBRE and the CBRE logo are the service marks of CBRE Limited and/or its affiliated or related companies in other countries. All other marks displayed on this document are the property of their respective owners. All Rights Reserved. Mapping Sources: Canadian Mapping Services [canadamapping@cbre.com](mailto:canadamapping@cbre.com); DMT Spatial, EnviroAnalytics, Microsoft Bing, Google Earth.

# CBRE